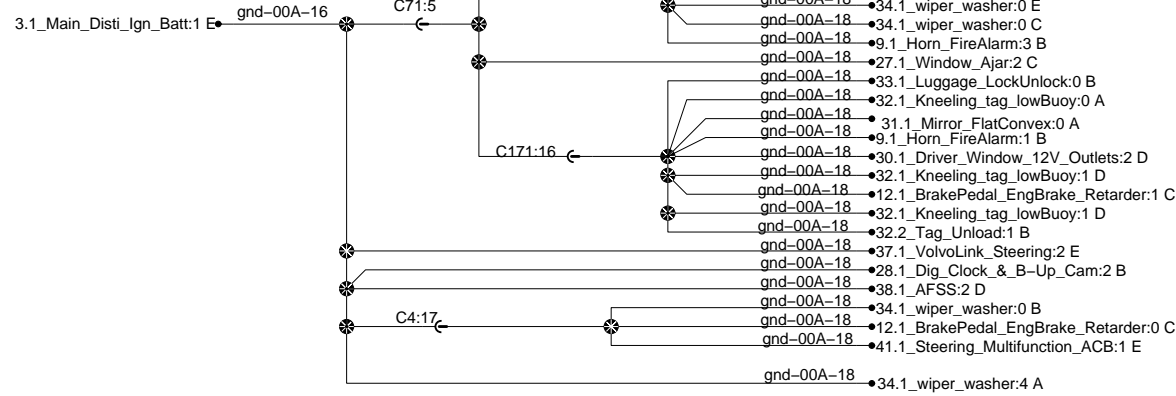
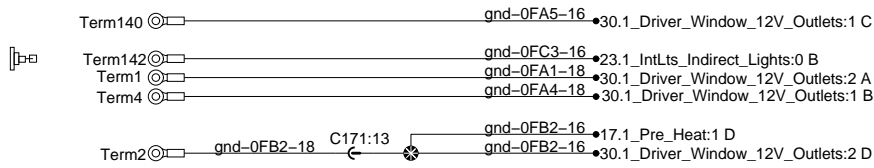


Ground Distribution

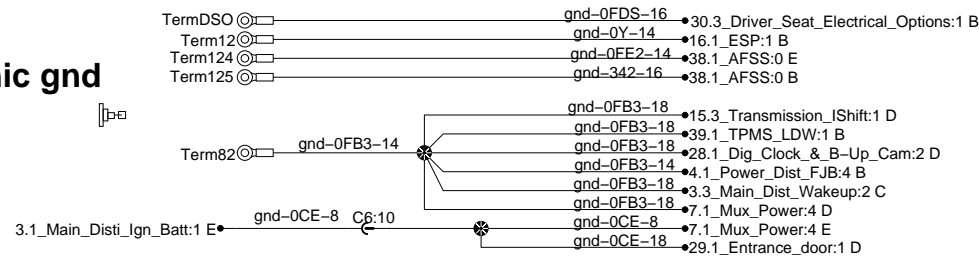
Electronic gnd to Dash harness



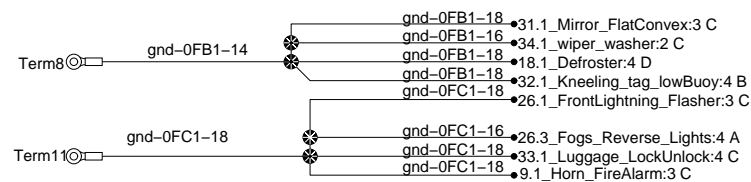
Dash stud



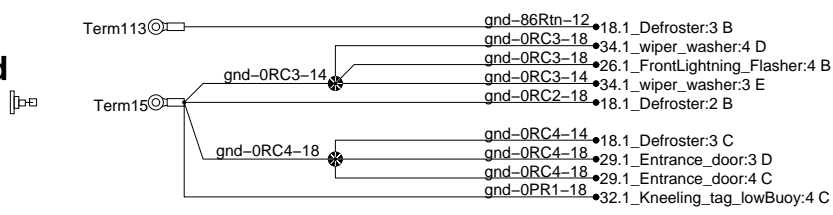
Electronic gnd to FJB



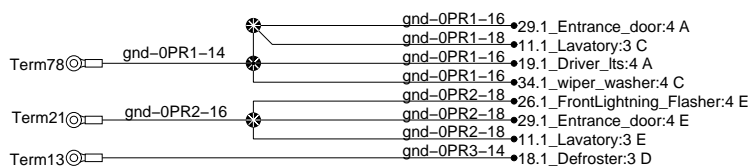
Front stud



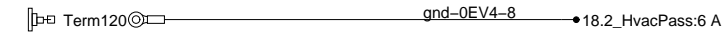
RH Console stud



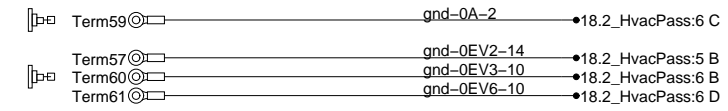
Chassis gnd Parcel Rack stud



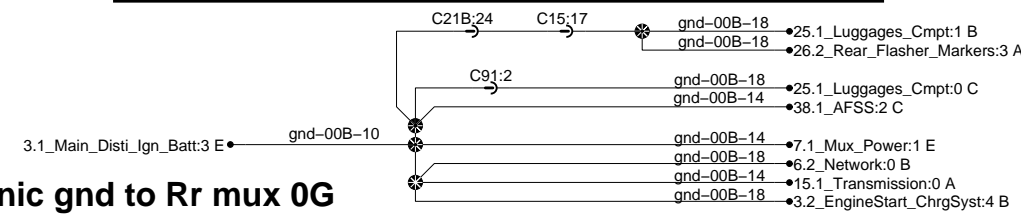
Condensor cmpt. stud



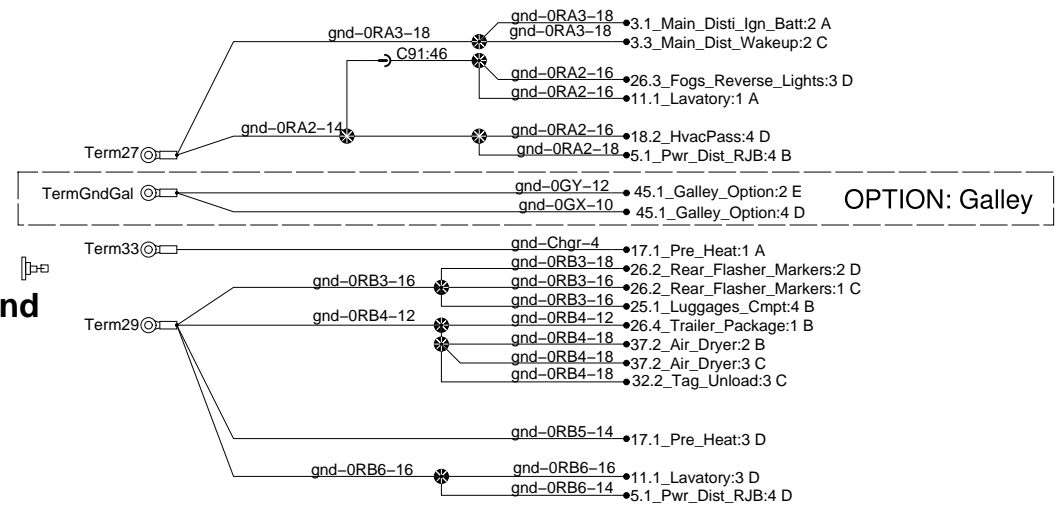
Evaporator cmpt. stud



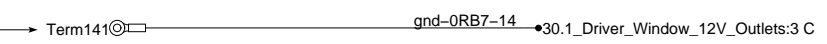
Electronic gnd to Rr mux 0G



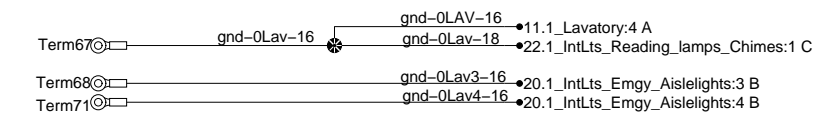
RJB stud Chassis Gnd



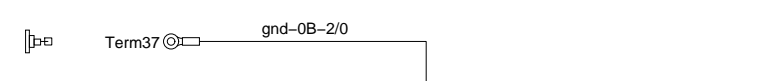
OPTION: Additional 12VDC Plugs



Lavatory Stud



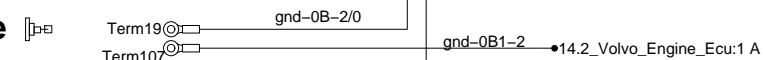
Eng. cmpt gnd stud



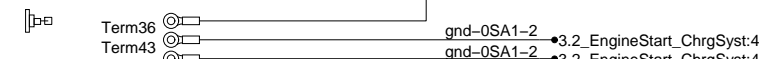
Eng. cmpt gnd stud



Engine



Engine



Engine

