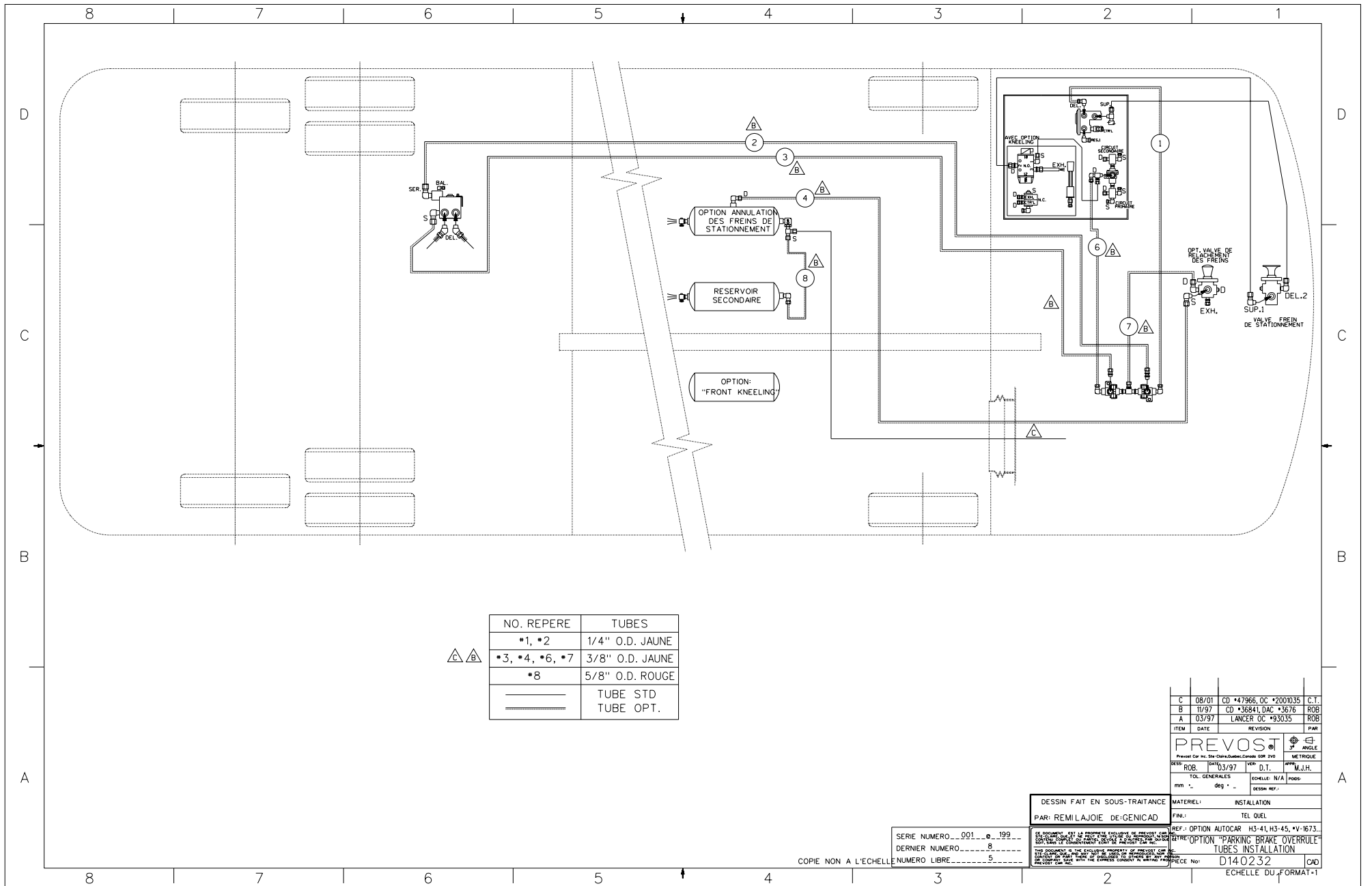




BALLOON	PIPE
#1	1/4" O.D. YELLOW
#2	3/8" O.D. YELLOW
#3	5/8" O.D. RED
—	STD PIPING
- - -	OPT. PIPING

H3-41 & H3-45 COACH
 OPTION PARKING BRAKES
 OVERRULE INST.
 DI40232 REV. A



NO. REPERE	TUBES
*1, *2	1/4" O.D. JAUNE
*3, *4, *6, *7	3/8" O.D. JAUNE
*8	5/8" O.D. ROUGE
	TUBE STD
	TUBE OPT.



COPIE NON A L'ECHELLE

SERIE NUMERO...001...0...199...
 DERNIER NUMERO...8...
 NUMERO LIBRE...5...

DESSIN FAIT EN SOUS-TRAITANCE
 PAR: REMILAJOIE DE:GENICAD

REF.: OPTION AUTOCAR H3-41, H3-45, VV-1673...
 REF.: OPTION "PARKING BRAKE OVERRULE"
 TUBES INSTALLATION
 PIECE No: D140232

ITEM	DATE	REVISION	PAR
C	08/01	CD *47966, OC *2001035	C.T.
B	11/97	CD *36841, DAC *3676	ROB
A	03/97	LANCER OC *93035	ROB
PREVOST <small>Prevost Car Inc. - 514-348-4666 - 1000</small>			
DESS:	ROB	DATE: 03/97	VER: 1
D.T.:	APP: M.J.H.	ECHELLE: N/A	
TOL GENERALES		DESSIN REF.:	
mm	deg	mm	
MATERIEL:		INSTALLATION	
FINI:		TEL QUEL	
<small>THIS DOCUMENT IS THE EXCLUSIVE PROPERTY OF PREVOST CAR INC. IT IS TO BE USED ONLY FOR THE PURPOSES AND IN THE MANNER SPECIFIED HEREIN. ANY REPRODUCTION OR TRANSMISSION OF THIS DOCUMENT WITHOUT THE WRITTEN PERMISSION OF PREVOST CAR INC. IS STRICTLY PROHIBITED.</small>			
Echelle du format: 1			CAD