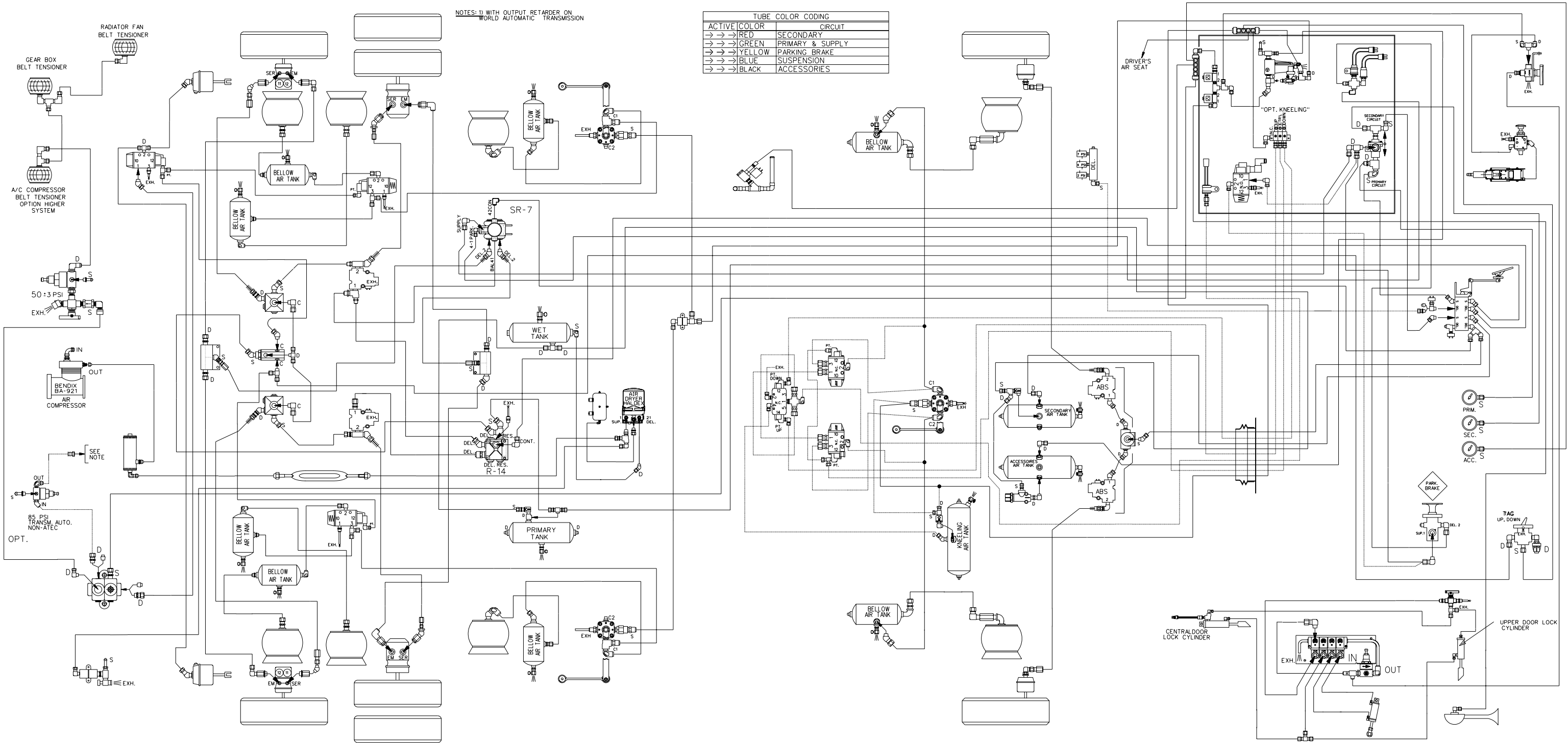


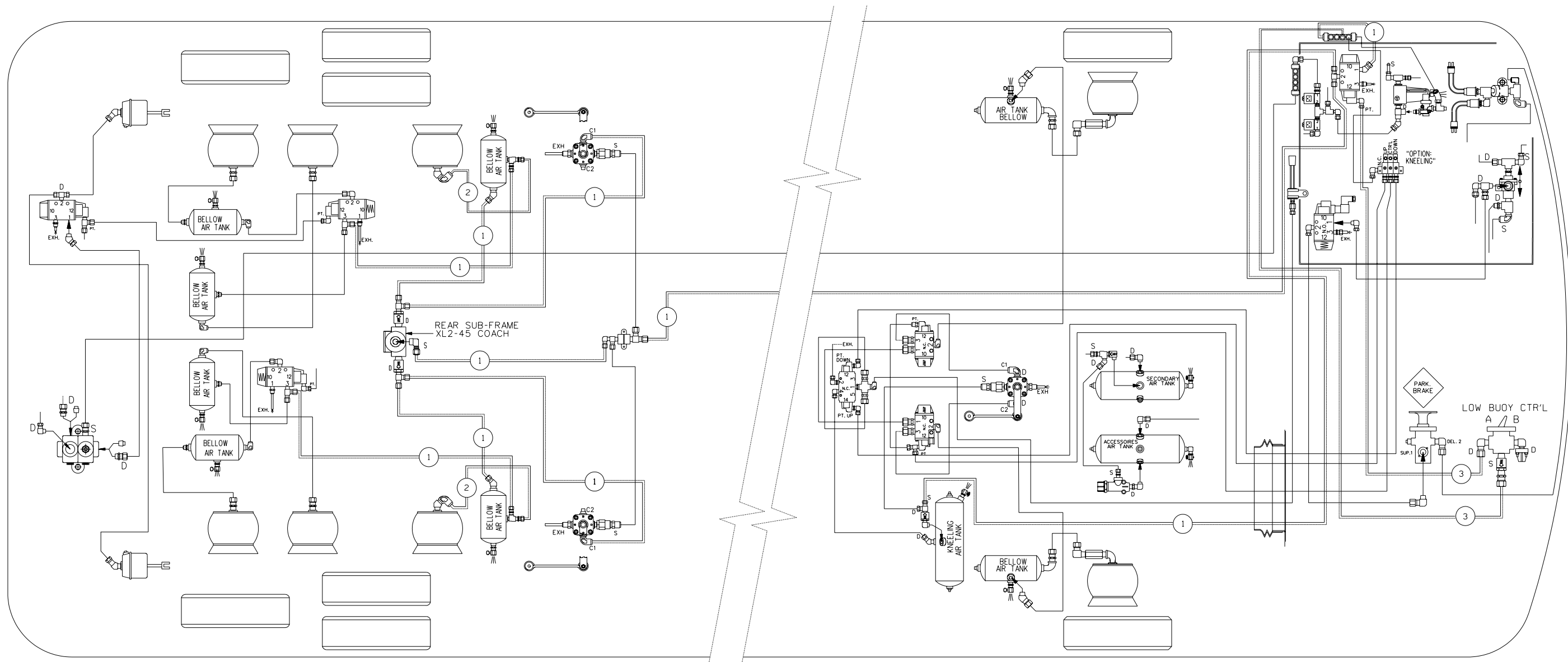
DATE: 2003/02

D140300 P.1 REV.A
 XL2-45 COACH, ENGINE 2002 WITH
 INDEPENDENT FRONT SUSPENSION (I.F.S.)



DATE: 2004/01

D140300 P.1 REV.C
 XL2-45 COACH, ENGINE 2002 WITH
 INDEPENDENT FRONT SUSPENSION (I.F.S.)

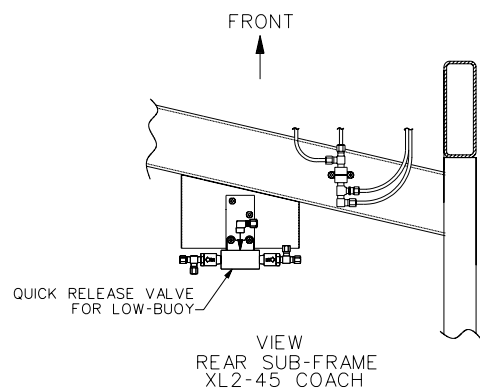


NOTE:

CONTROL VALVE OPT. "LOW-BUOY" , "A" OR "B" SETTING:

POSITION "A": VALVE IS OPEN,
AIR FLOW BETWEEN SUPPLY (S) AND
DELIVERY (D) , LOW-BUOY IS NOT IN FUNCTION.

POSITION "B": VALVE CLOSED,
AIR DOESN'T FLOW BETWEEN SUPPLY (S) AND
DELIVERY (D) , LOW-BUOY IS IN FUNCTION.

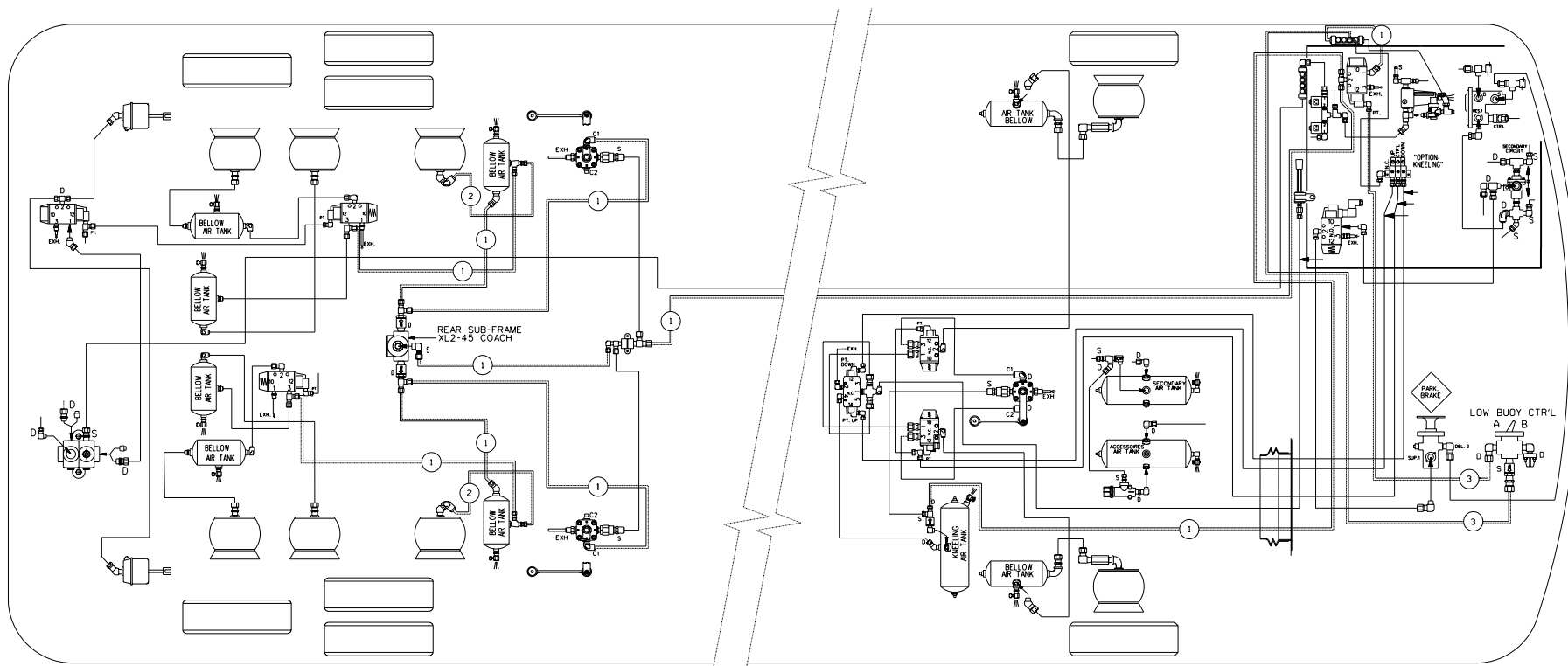


TUBE COLOR CODING	
ACTIVE COLOR	CIRCUIT
→ → → RED	SECONDARY
→ → → GREEN	PRIMARY & SUPPLY
→ → → YELLOW	PARKING BRAKE
→ → → BLUE	SUSPENSION
→ → → BLACK	ACCESSORIES

BALLOON	PIPE
#1	3/8" O.D. BLUE
#2	3/4" O.D. BLACK
#3	1/4" O.D. BLACK
=====	STD PIPING
=====	OPTIONAL PIPING

XL2-45 COACH,
ENGINE 2002
WITH I. F. S.

WITH OPTION FRONT KNEELING
& REAR LOW-BUOY COMBINATION

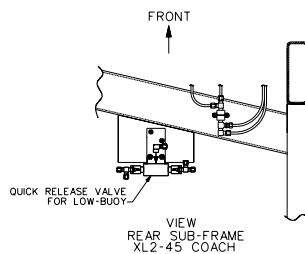


NOTE:

CONTROL VALVE OPT. "LOW-BUOY" , "A" OR "B" SETTING:

POSITION "A": VALVE IS OPEN,
AIR FLOW BETWEEN SUPPLY (S) AND
DELIVERY (D) , LOW-BUOY IS NOT IN FUNCTION.

POSITION "B": VALVE CLOSED,
AIR DOES'NT FLOW BETWEEN SUPPLY (S) AND
DELIVERY (D) , LOW-BUOY IS IN FUNCTION.



TUBE COLOR CODING	
ACTIVE COLOR	CIRCUIT
→ → RED	SECONDARY
→ → GREEN	PRIMARY & SUPPLY
→ → YELLOW	PARKING BRAKE
→ → BLUE	SUSPENSION
→ → BLACK	ACCESSORIES

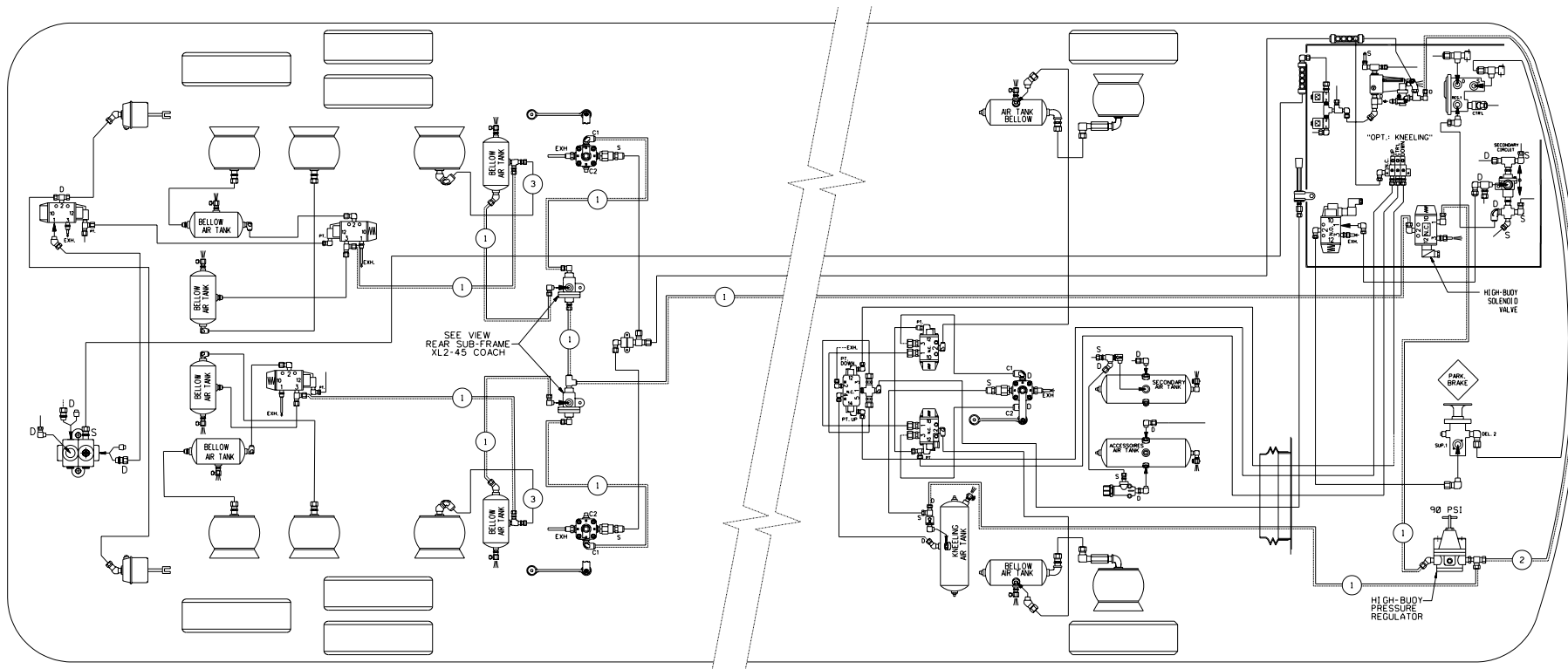
BALLOON	PIPE
*1	3/8" O.D. BLUE
*2	3/4" O.D. BLACK
*3	1/4" O.D. BLACK
—	STD PIPING
—	OPTIONAL PIPING

XL2-45 COACH,
ENGINE 2002
WITH I. F. S.

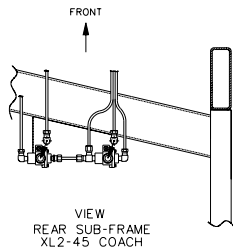
WITH OPTION FRONT KNEELING
& REAR LOW-BUOY COMBINATION

D140300 P2 REV. A

DATE : 2003/03



SEE VIEW
REAR SUB-FRAME
XL2-45 COACH



TUBE COLOR CODING	
ACTIVE COLOR	CIRCUIT
→ → → RED	SECONDARY
→ → → GREEN	PRIMARY & SUPPLY
→ → → YELLOW	PARKING BRAKE
→ → → BLUE	SUSPENSION
→ → → BLACK	ACCESSORIES

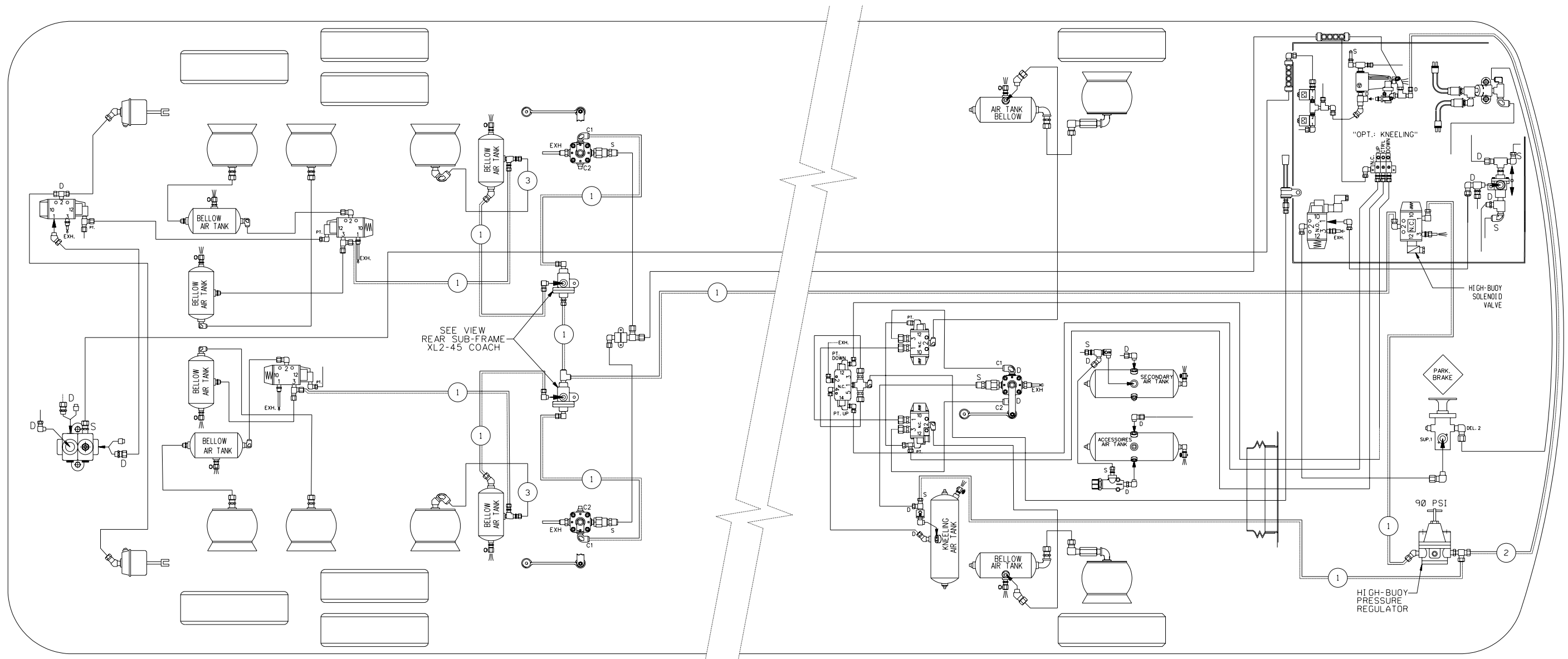
BALLOON	PIPE
• 1	3/8" O.D. BLUE
• 2	1/2" O.D. BLUE
• 3	3/4" O.D. BLACK
---	STD PIPING
---	OPTIONAL PIPING

XL2-45 COACH,
ENGINE 2002
WITH I. F. S.

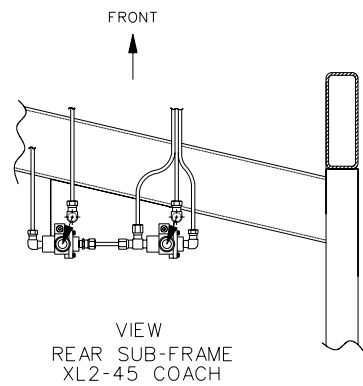
WITH OPTION FRONT KNEELING
& HIGH-BUOY COMBINATION.

D140300 P3 REV. A

DATE : 2003/03



SEE VIEW
REAR SUB-FRAME
XL2-45 COACH



VIEW
REAR SUB-FRAME
XL2-45 COACH

TUBE COLOR CODING		
ACTIVE	COLOR	CIRCUIT
→ → →	RED	SECONDARY
→ → →	GREEN	PRIMARY & SUPPLY
→ → →	YELLOW	PARKING BRAKE
→ → →	BLUE	SUSPENSION
→ → →	BLACK	ACCESSORIES

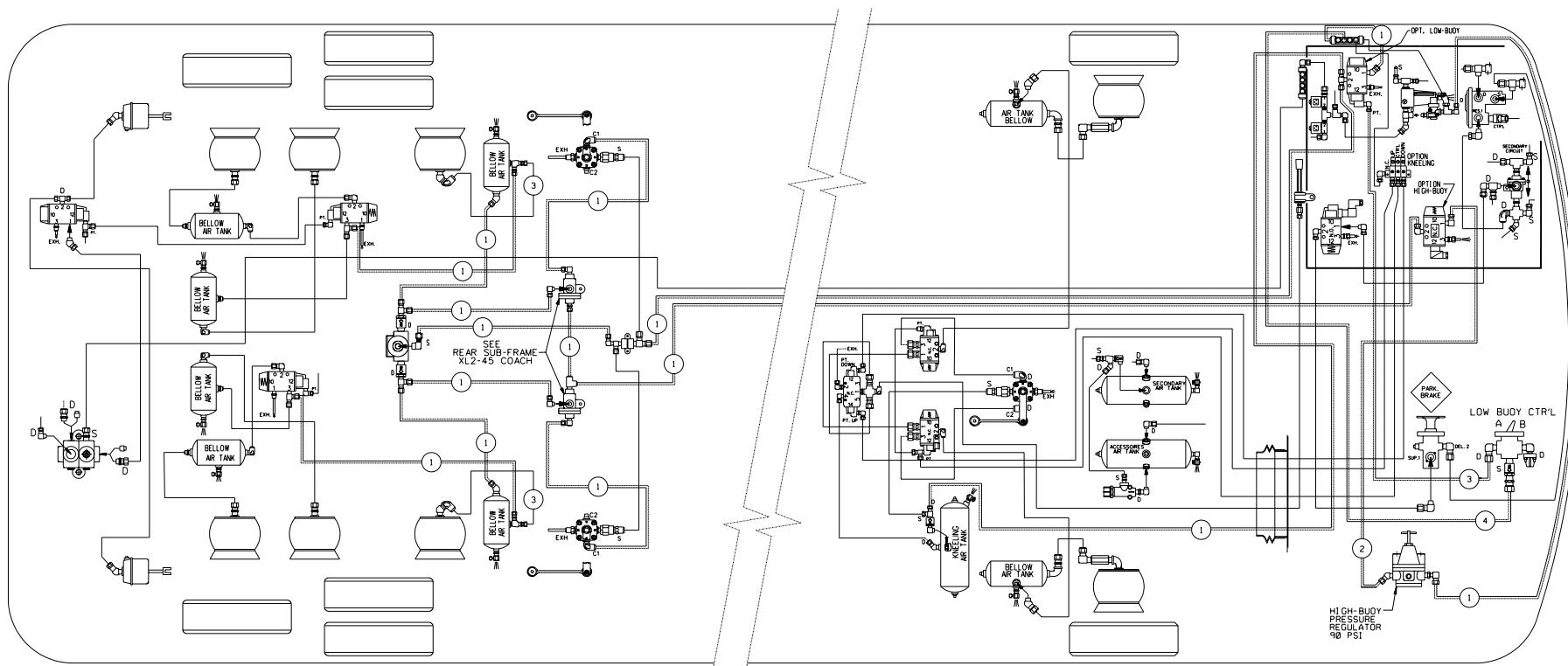
BALLOON	PIPE
# 1	3/8" O.D. BLUE
# 2	1/2" O.D. BLUE
# 3	3/4" O.D. BLACK
—	STD PIPING
==	OPTIONAL PIPING

XL2-45 COACH,
ENGINE 2002
WITH I.F.S.

WITH OPTION FRONT KNEELING
& HIGH-BUOY COMBINATION.

D1 40300 P3 REV. B

DATE : 2004/02

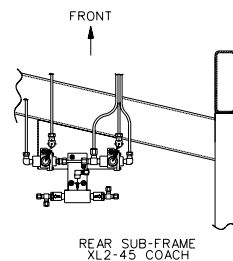


NOTE:

CONTROL VALVE OPT. "LOW-BUOY", "A" OR "B" SETTING:

POSITION "A": VALVE IS OPEN,
AIR FLOW BETWEEN SUPPLY (S) AND
DELIVERY (D), LOW-BUOY IS NOT IN FUNCTION.

POSITION "B": VALVE CLOSED,
AIR DOESN'T FLOW BETWEEN SUPPLY (S) AND
DELIVERY (D), LOW-BUOY IS IN FUNCTION.



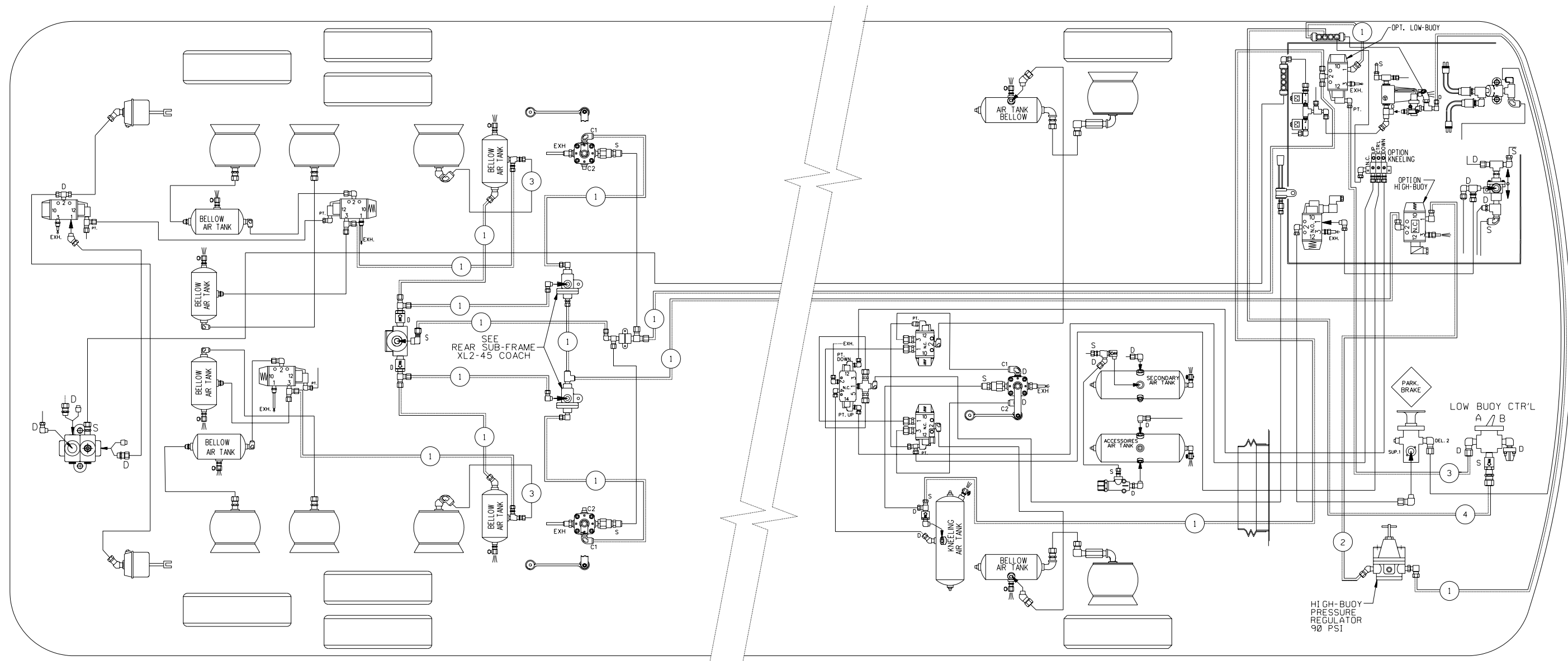
TUBE COLOR CODING	
ACTIVE COLOR	CIRCUIT
→ → RED	SECONDARY
→ → GREEN	PRIMARY & SUPPLY
→ → YELLOW	PARKING BRAKE
→ → BLUE	SUSPENSION
→ → BLACK	ACCESSORIES

BALLOON	PIPE
*1	3/8" O.D. BLUE
*2	1/2" O.D. BLUE
*3	3/4" O.D. BLACK
*4	1/4" O.D. BLACK
——	STD PIPING
——	OPTIONAL PIPING

XL2-45 COACH,
ENGINE 2002
WITH I. F. S.

WITH OPTION FRONT
KNEELING, LOW-BUOY &
HIGH-BUOY COMBINATION
D140300 P4 REV. A

DATE : 2003/02

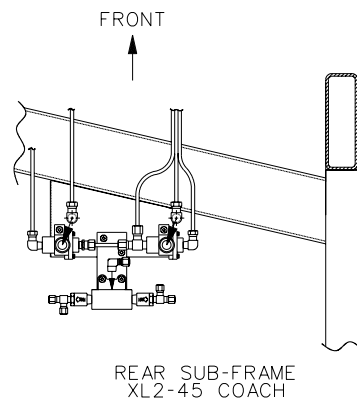


NOTE:

CONTROL VALVE OPT. "LOW-BUOY" , "A" OR "B" SETTING:

POSITION "A": VALVE IS OPEN,
AIR FLOW BETWEEN SUPPLY (S) AND
DELIVERY (D) , LOW-BUOY IS NOT IN FUNCTION.

POSITION "B": VALVE CLOSED,
AIR DOESN'T FLOW BETWEEN SUPPLY (S) AND
DELIVERY (D) , LOW-BUOY IS IN FUNCTION.

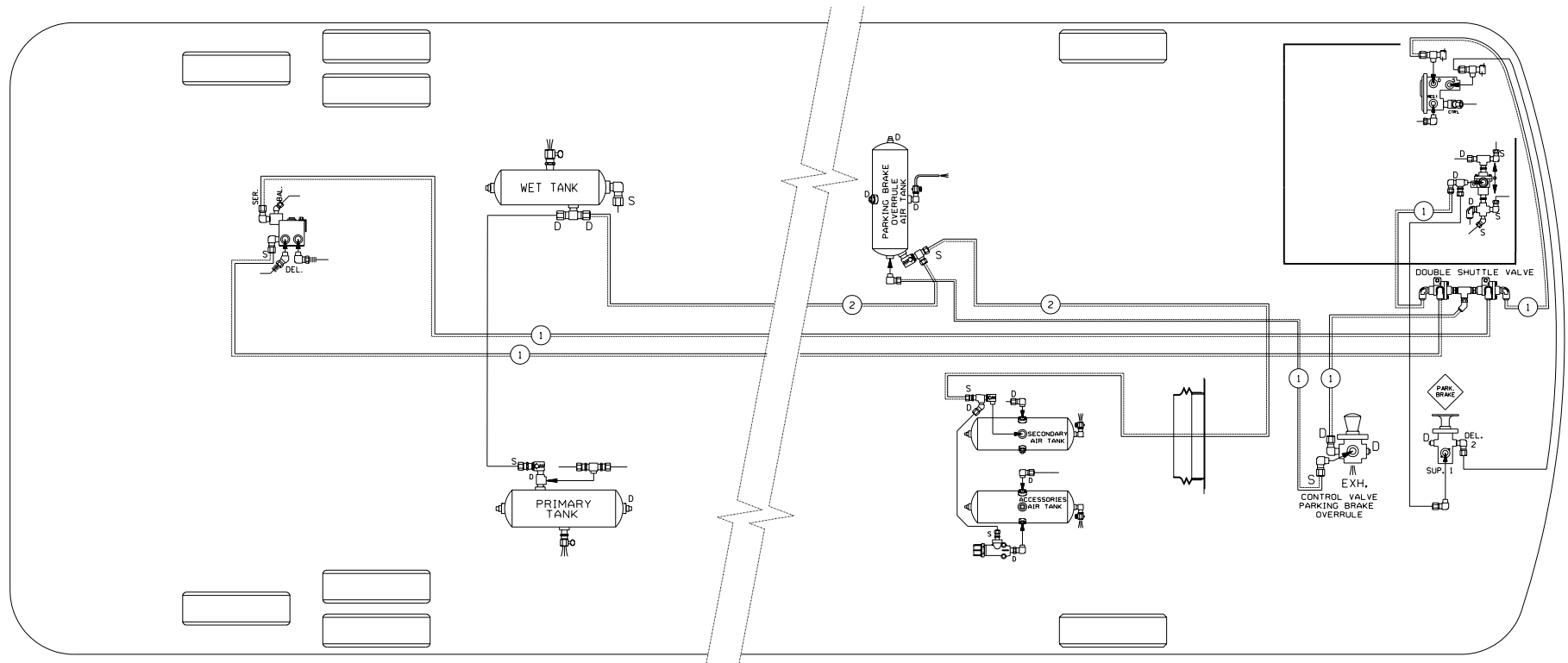


TUBE COLOR CODING		
ACTIVE	COLOR	CIRCUIT
→ → →	RED	SECONDARY
→ → →	GREEN	PRIMARY & SUPPLY
→ → →	YELLOW	PARKING BRAKE
→ → →	BLUE	SUSPENSION
→ → →	BLACK	ACCESSORIES

BALLOON	PIPE
#1	3/8" O.D. BLUE
#2	1/2" O.D. BLUE
#3	3/4" O.D. BLACK
#4	1/4" O.D. BLACK
=====	STD PIPING
=====	OPTIONAL PIPING

XL2-45 COACH,
ENGINE 2002
WITH I.F.S.

WITH OPTION FRONT
KNEELING, LOW-BUOY &
HIGH-BUOY COMBINATION

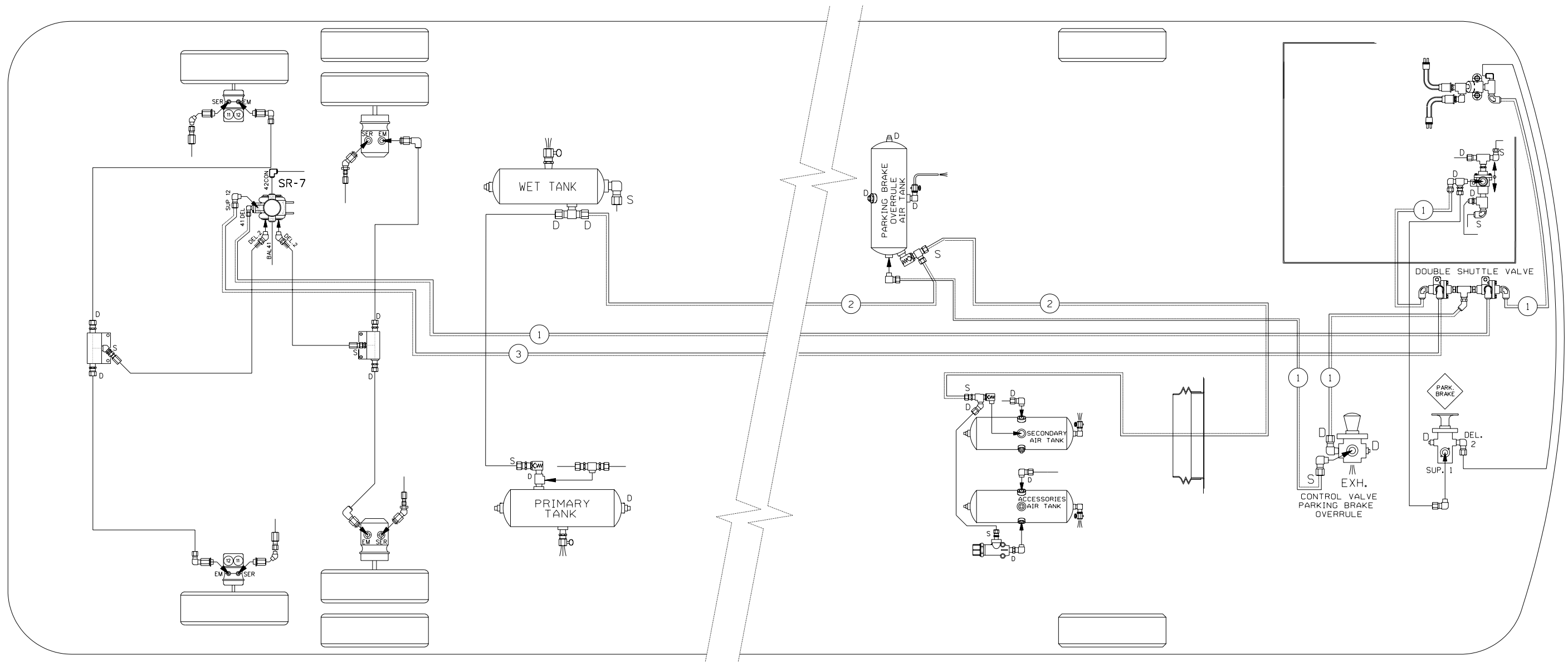


TUBE COLOR CODING	
ACTIVE COLOR	CIRCUIT
→→→RED	SECONDARY
→→→GREEN	PRIMARY & SUPPLY
→→→YELLOW	PARKING BRAKE
→→→BLUE	SUSPENSION
→→→BLACK	ACCESSORIES

BALLOON	PIPE
*1	3/8" O.D. YELLOW
*2	5/8" O.D. GREEN
=====	STD PIPING OPTIONAL PIPING

XL2-45 COACH,
ENGINE 2002
WITH I. F. S.
WITH OPTION
PARKING BRAKE OVERRULE
D140300 P5 REV. A

DATE : 2003/06

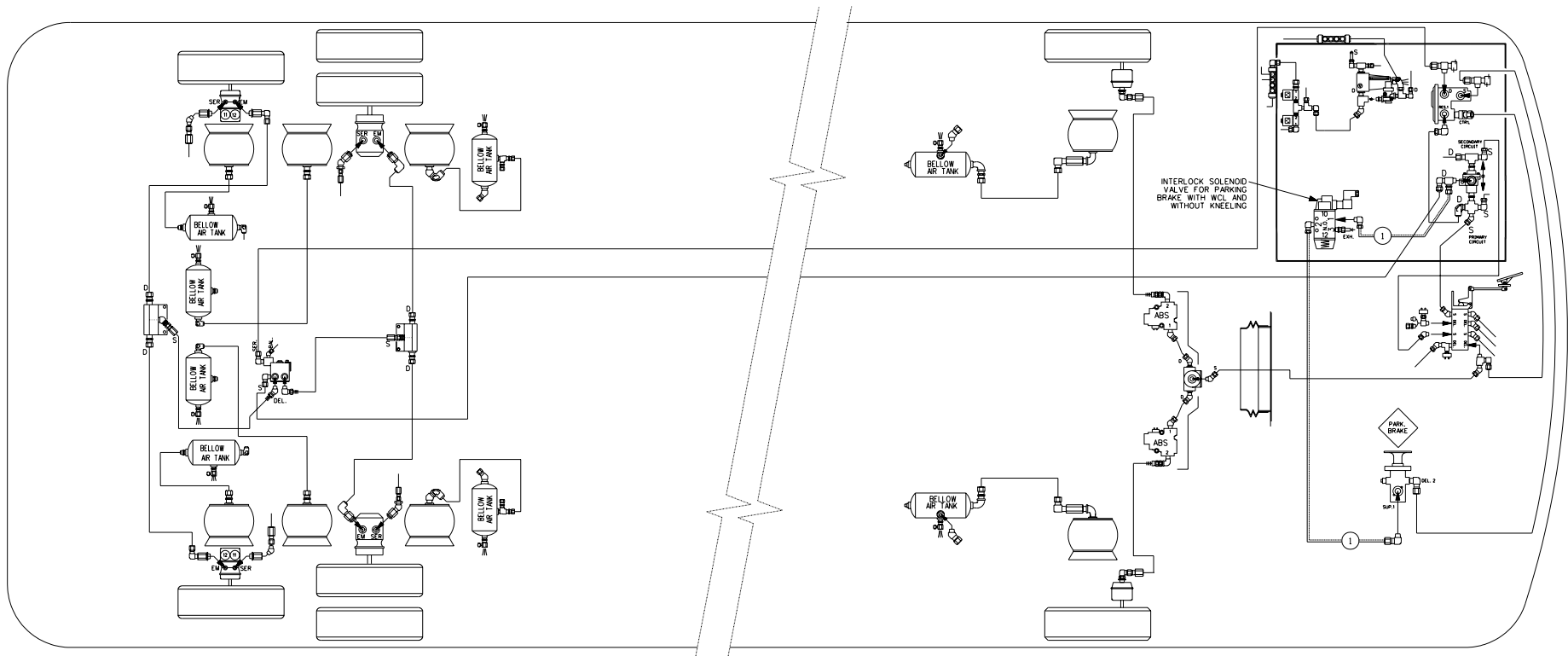


TUBE COLOR CODING	
ACTIVE COLOR	CIRCUIT
→ → → RED	SECONDARY
→ → → GREEN	PRIMARY & SUPPLY
→ → → YELLOW	PARKING BRAKE
→ → → BLUE	SUSPENSION
→ → → BLACK	ACCESSORIES

BALLOON	PIPE
#1	3/8" O.D. YELLOW
#2	5/8" O.D. GREEN
#3	1/2" O.D. YELLOW
— — —	STD PIPING
— — —	OPTIONAL PIPING

XL2-45 COACH,
ENGINE 2002
WITH I. F. S.

WITH OPTION
PARKING BRAKE OVERRULE
D1 40300 P5 REV. B



TUBE COLOR CODING	
ACTIVE COLOR	CIRCUIT
→ → RED	SECONDARY
→ → GREEN	PRIMARY & SUPPLY
→ → YELLOW	PARKING BRAKE
→ → BLUE	SUSPENSION
→ → BLACK	ACCESSORIES

BALLOON	PIPE
*1	3/8" O.D. YELLOW
_____	STD PIPING
_____	OPTIONAL PIPING

XL2-45 COACH,
ENGINE 2002
WITH I. F. S.

WITH OPTION PARKING BRAKE
WITH WHEELCHAIR LIFT
AND WITHOUT KNEELING

D140300 P6 REV. A

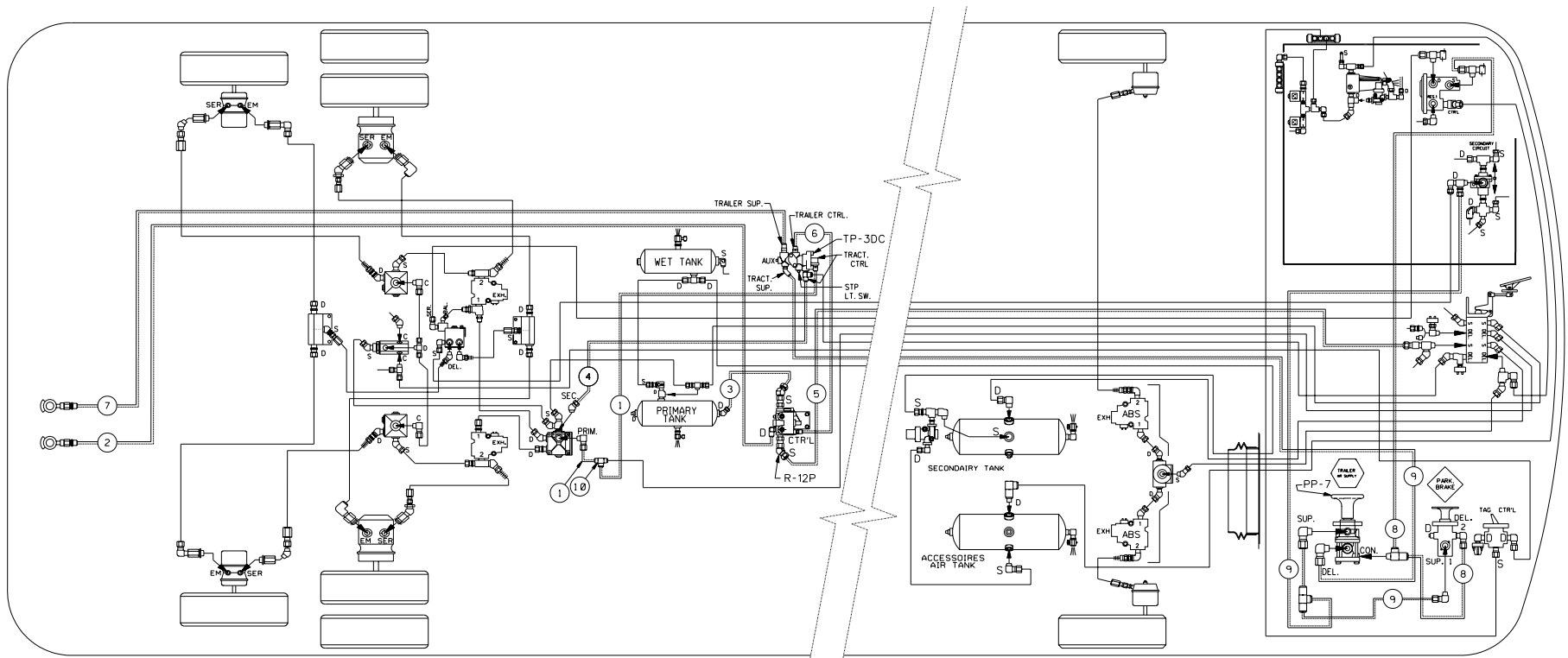
DATE : 2003/04



TUBE COLOR CODING		
ACTIVE	COLOR	CIRCUIT
→ → →	RED	SECONDARY
→ → →	GREEN	PRIMARY & SUPPLY
→ → →	YELLOW	PARKING BRAKE
→ → →	BLUE	SUSPENSION
→ → →	BLACK	ACCESSORIES

BALLOON	PIPE
#1	3/8" O.D. YELLOW
———	STD PIPING
=====	OPTIONAL PIPING

XL2-45 COACH,
 ENGINE 2002
 WITH FRONT BEAM AXLE
 WITH OPTION PARKING BRAKE
 WITH WEELCHAIR LIFT
 AND WITHOUT KNEELING
 D1 40301 P6 REV. B



TUBE COLOR CODING	
ACTIVE COLOR	CIRCUIT
→ → → RED	SECONDARY
→ → → GREEN	PRIMARY & SUPPLY
→ → → YELLOW	PARKING BRAKE
→ → → BLUE	SUSPENSION
→ → → BLACK	ACCESSORIES

BALLOON	PIPE
*1	3/8" O.D. GREEN
*2	1/2" O.D. GREEN
*3	5/8" O.D. GREEN
*4	3/8" O.D. RED
*5	5/8" O.D. RED
*6	3/8" O.D. BROWN
*7	1/2" O.D. BROWN
*8	1/4" O.D. YELLOW
*9	3/8" O.D. YELLOW
*10	3/8" UNION TEE
—	STD PIPING
—	OPTIONAL PIPING

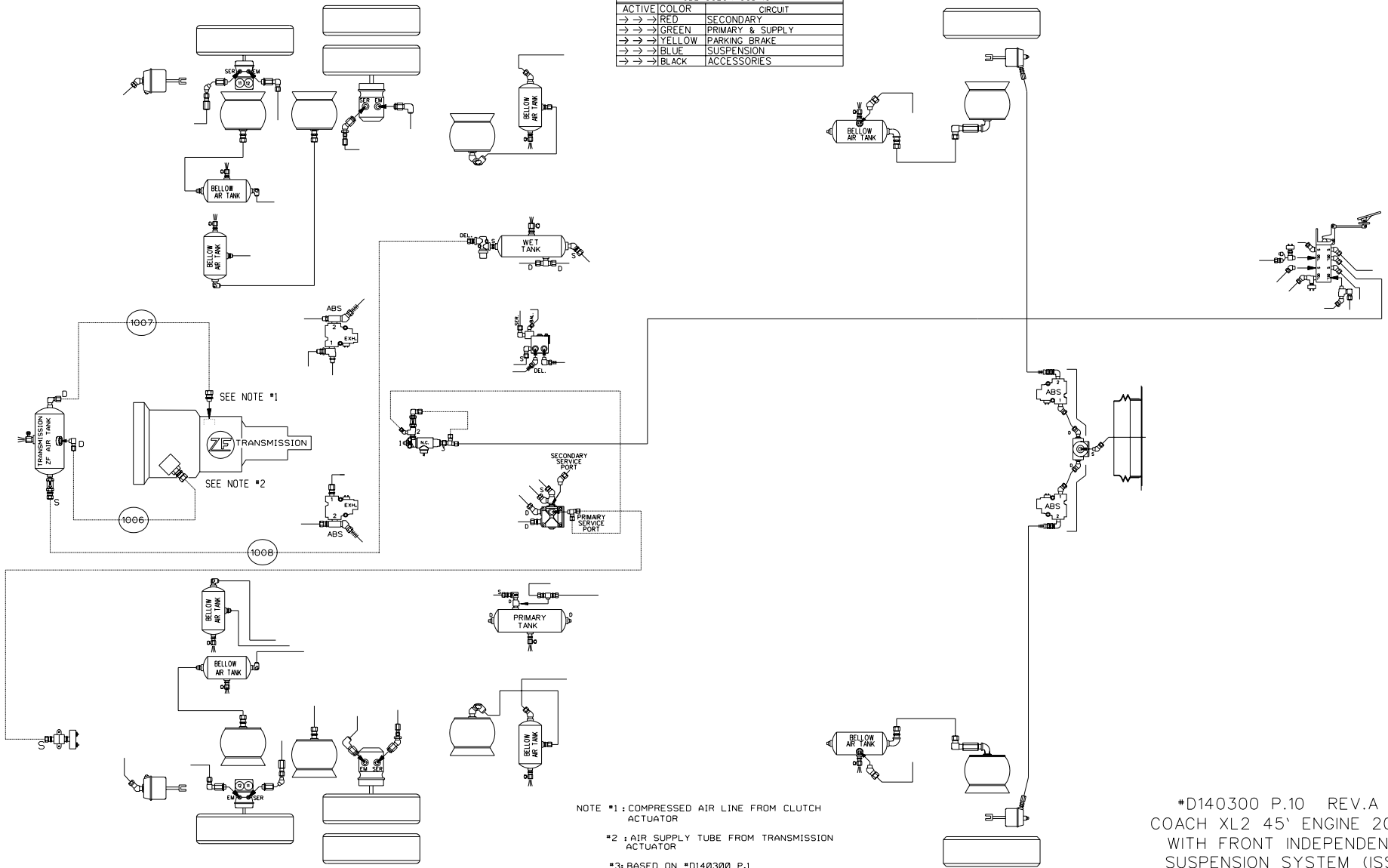
XL2-45 COACH,
ENGINE 2002
WITH I. F. S.

WITH OPTION
TRAILER HITCH

D140300 P9 REV. A

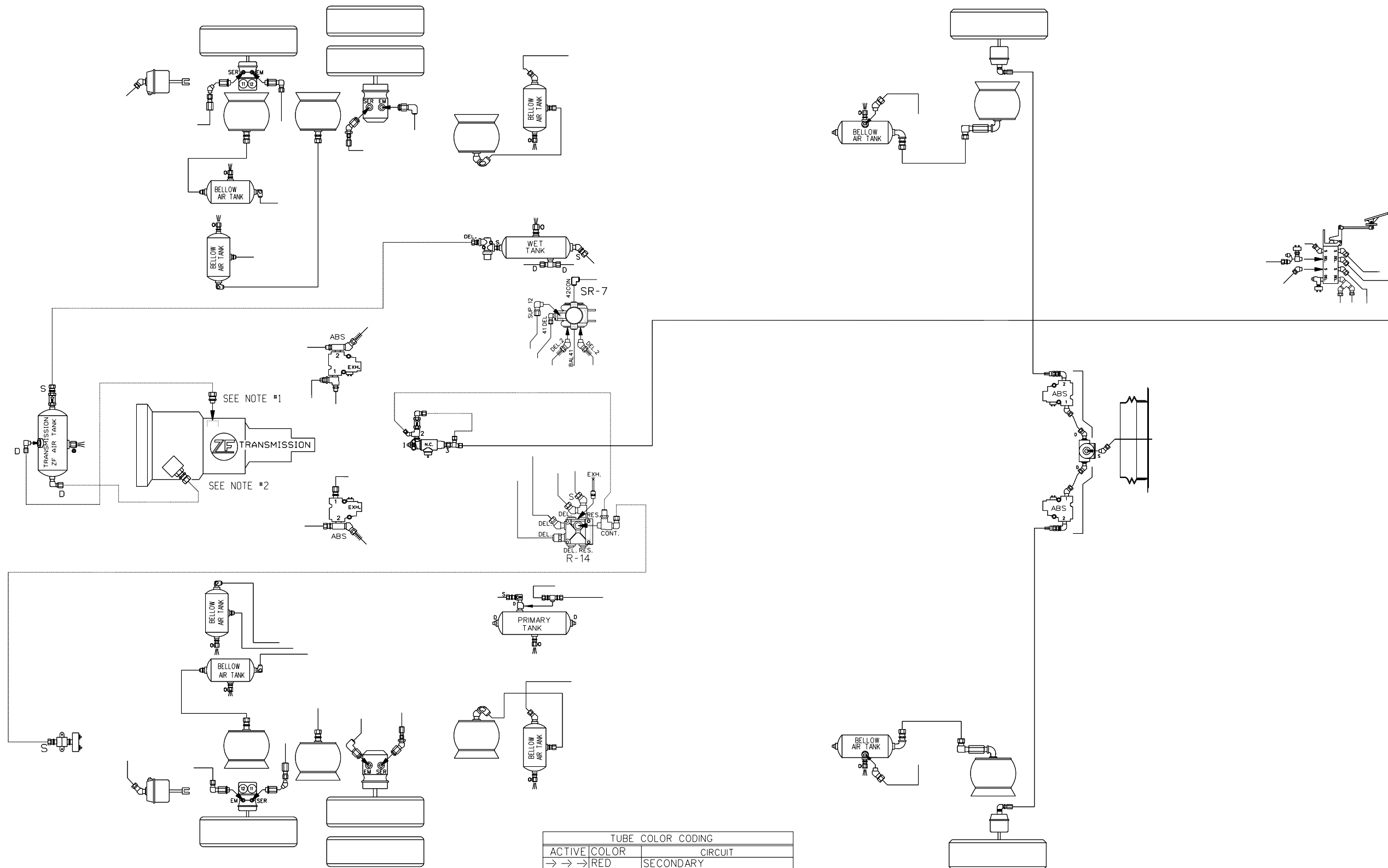
DATE : 2003/02

TUBE COLOR CODING	
ACTIVE COLOR	CIRCUIT
→ → RED	SECONDARY
→ → GREEN	PRIMARY & SUPPLY
→ → YELLOW	PARKING BRAKE
→ → BLUE	SUSPENSION
→ → BLACK	ACCESSORIES



NOTE #1 : COMPRESSED AIR LINE FROM CLUTCH ACTUATOR
 #2 : AIR SUPPLY TUBE FROM TRANSMISSION ACTUATOR
 #3: BASED ON #D140300 P.1

#D140300 P.10 REV.A
 COACH XL2 45' ENGINE 2002
 WITH FRONT INDEPENDENT
 SUSPENSION SYSTEM (ISS)
 OPTION TRANSMISSION ZF



NOTE #1: COMPRESSED AIR LINE FOR CLUTCH ACTUATOR

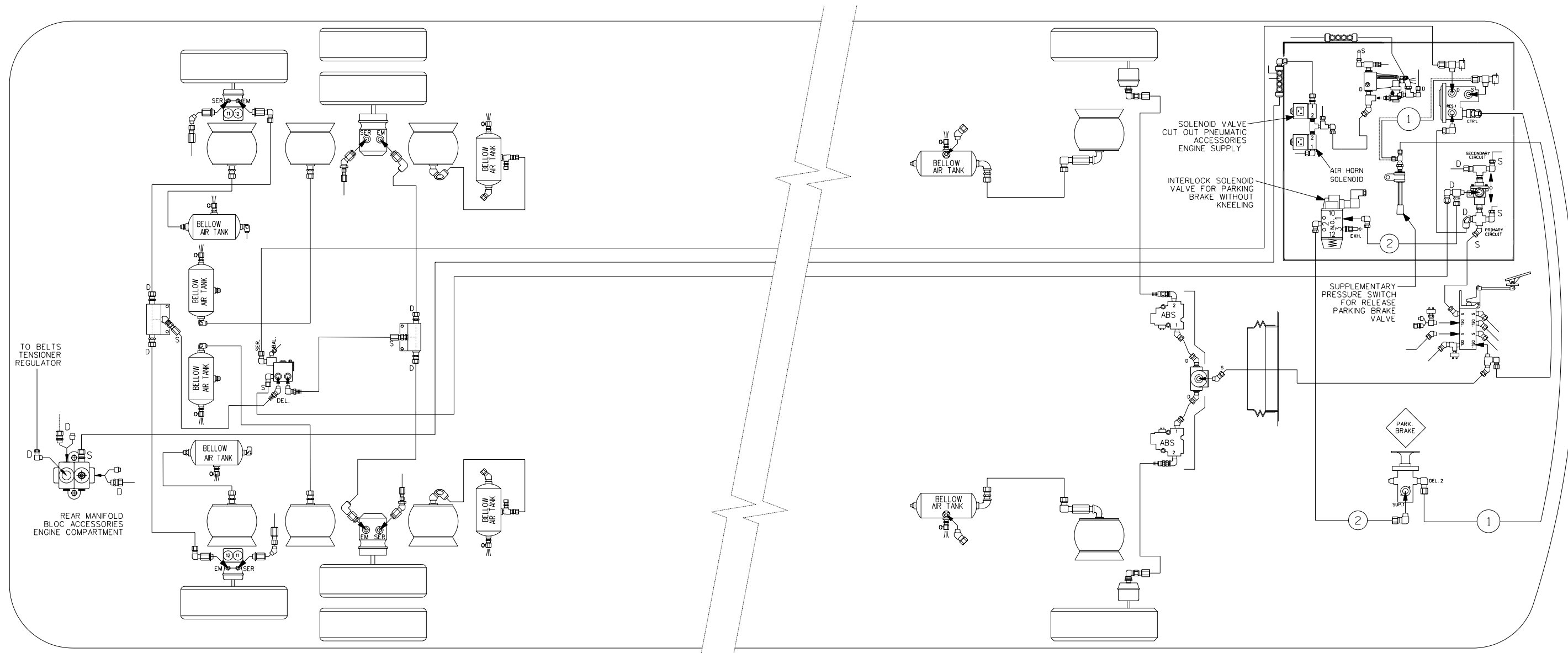
#2: COMPRESSED AIR LINE FOR TRANSMISSION ACTUATOR

#3: BASED ON #D140300 P.1

XL2-45 COACH,
ENGINE 2002
WITH I. F. S.

WITH OPTION
TRANSMISSION ZF
D140300 P10 REV. C

DATE : 2004/02



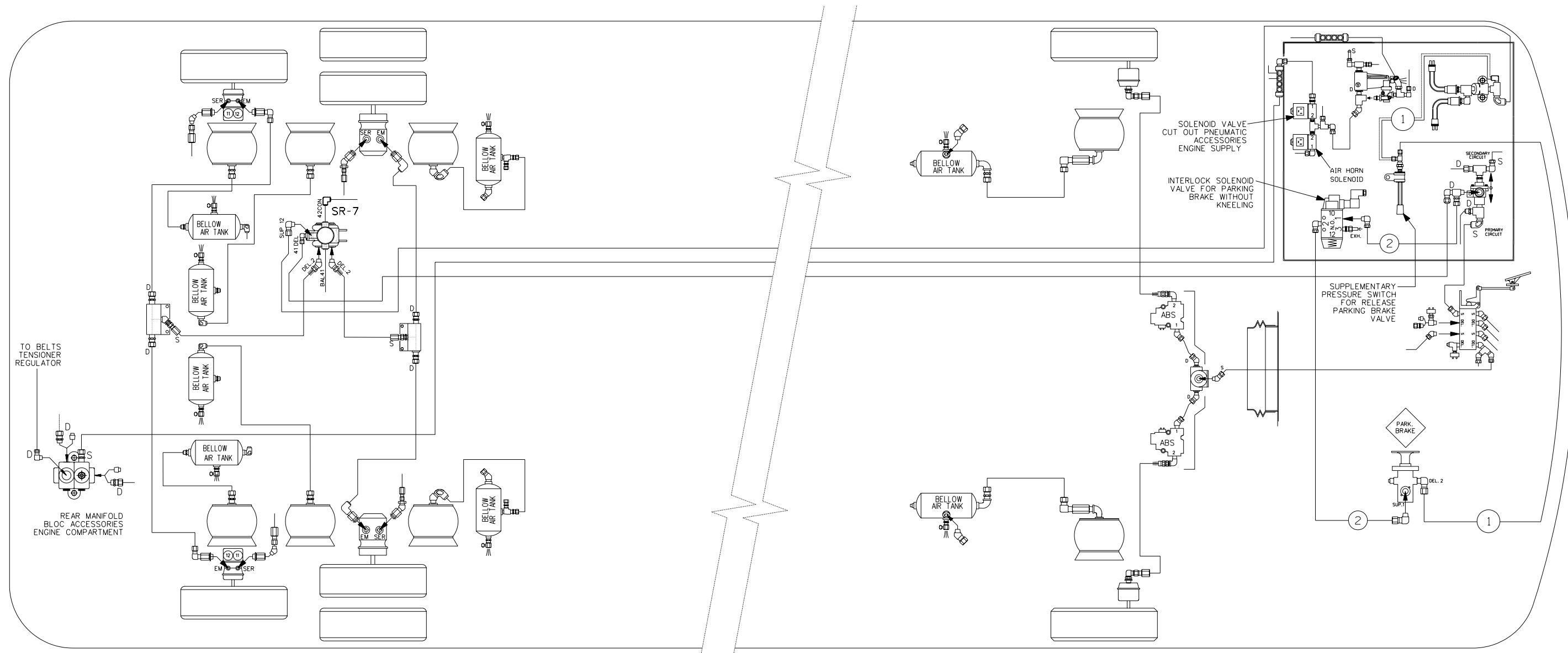
TUBE COLOR CODING		
ACTIVE	COLOR	CIRCUIT
→ → →	RED	SECONDARY
→ → →	GREEN	PRIMARY & SUPPLY
→ → →	YELLOW	PARKING BRAKE
→ → →	BLUE	SUSPENSION
→ → →	BLACK	ACCESSORIES

BALLOON	PIPE
#1	1/4" O.D. YELLOW
#2	3/8" O.D. YELLOW
———	STD PIPING
=====	OPTIONAL PIPING

XL2-45 COACH, ORLEANS
ENGINE 2002
WITH I. F. S.

WITH OPTION PARKING BRAKE
RELEASE WITH
SUPPLEMENTARY SWITCH

D1 40300 P. 11 REV. A



TUBE COLOR CODING		
ACTIVE	COLOR	CIRCUIT
→ → →	RED	SECONDARY
→ → →	GREEN	PRIMARY & SUPPLY
→ → →	YELLOW	PARKING BRAKE
→ → →	BLUE	SUSPENSION
→ → →	BLACK	ACCESSORIES

BALLOON	PIPE
#1	1/4" O.D. YELLOW
#2	3/8" O.D. YELLOW
———	STD PIPING
=====	OPTIONAL PIPING

XL2-45 COACH, ORLEANS
ENGINE 2002
WITH I. F. S.

WITH OPTION PARKING BRAKE
RELEASE WITH
SUPPLEMENTARY SWITCH

D1 40300 P.11 REV. B