

# Pneumatic diagram

## *PNEUMATIC DIAGRAMS X3-45 COACHES*

NO:	<b>D140405P0</b>	REVISION :	<b>A</b>
-----	------------------	------------	----------

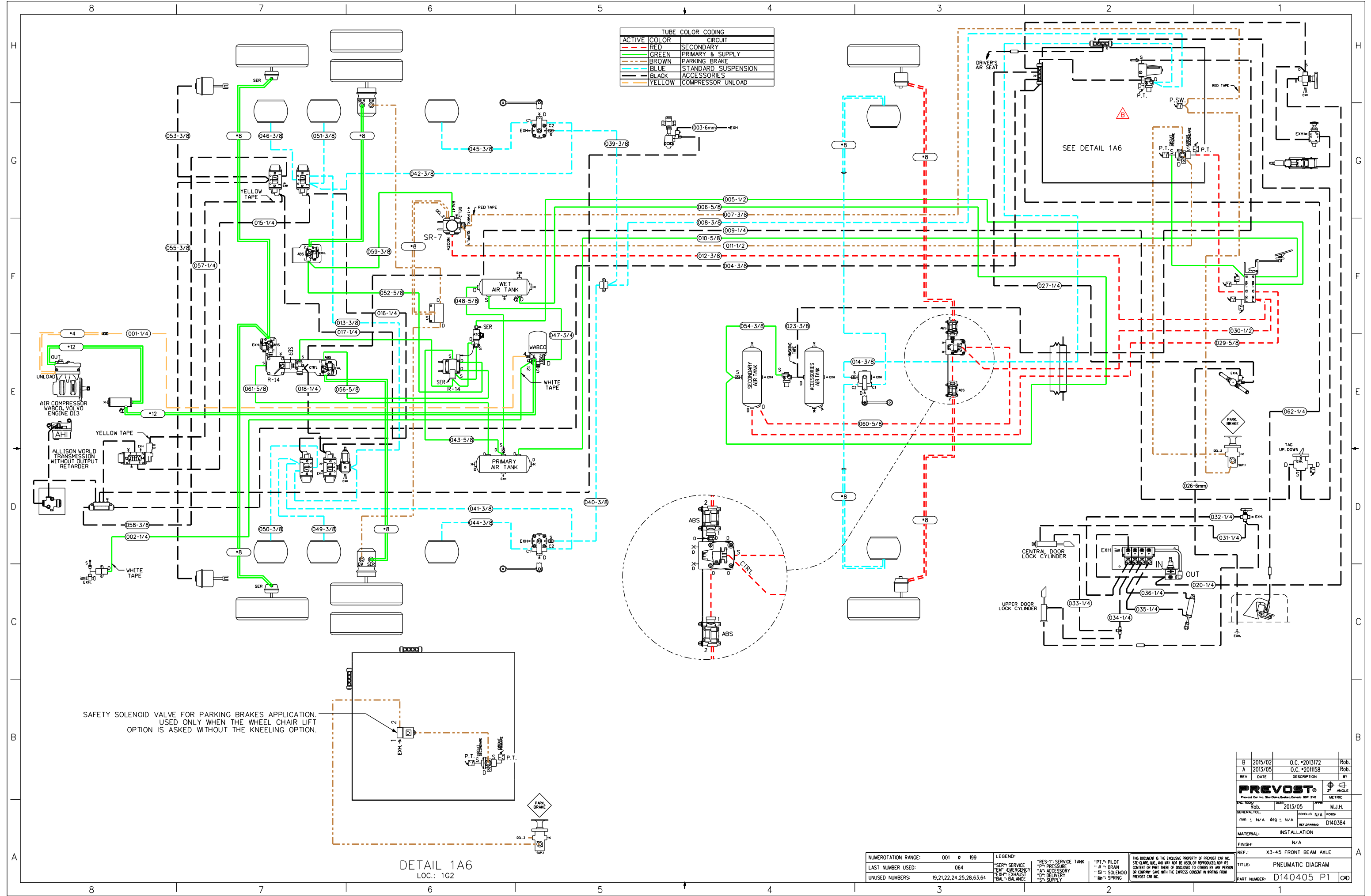
EFF. OC#	2011158	PRIOR TO OC#	
EFF. VEH#	#D-5459	PRIOR TO VEH#	

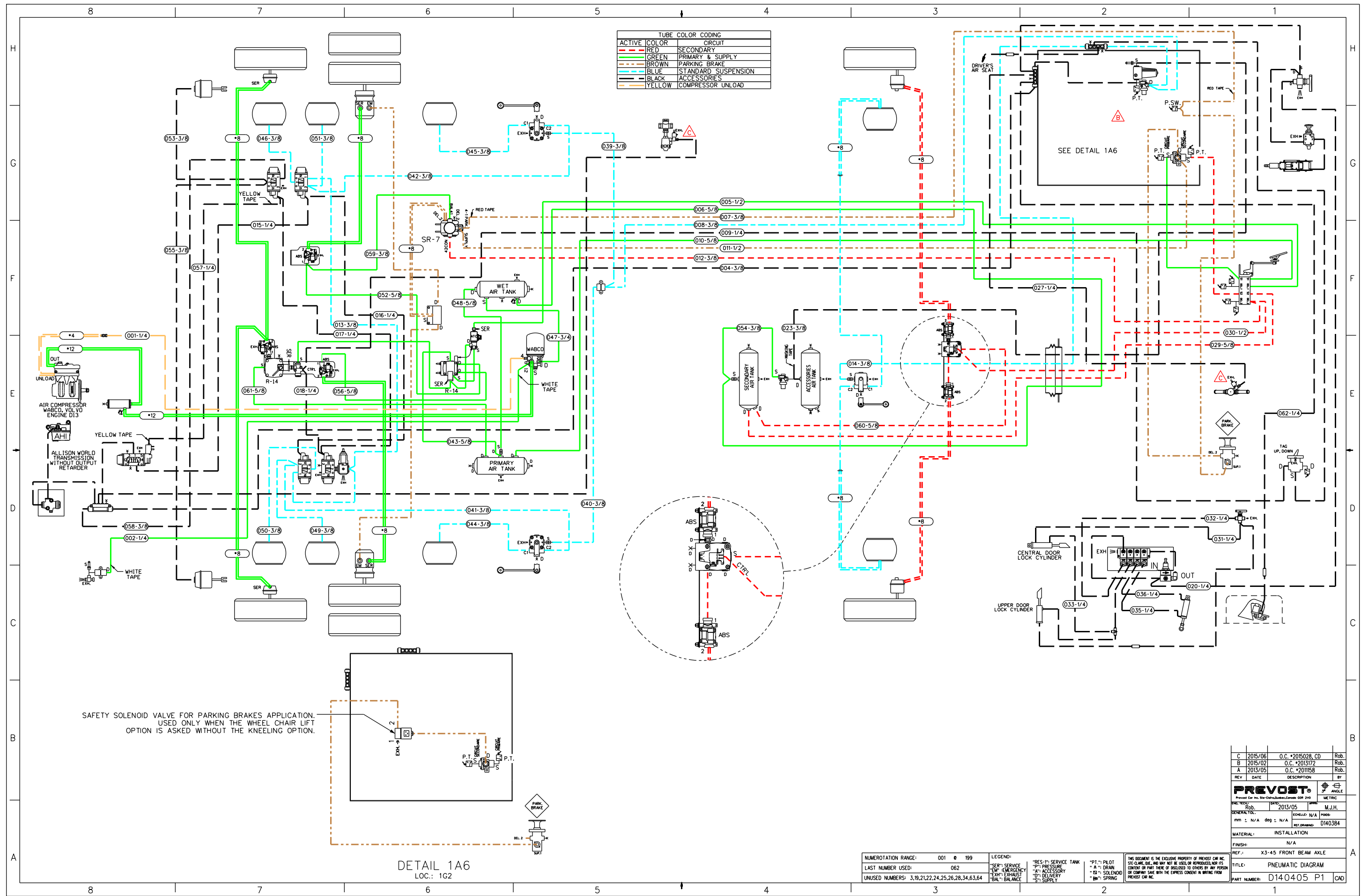
DR.	R. Bouillon	date	2013-03-27
CHK	Marc-Jose Handfield	appr	Marc-José Handfield

REV.	DATE	DESCRIPTION	PAGE	BY	CHK.	APPR.
A	2013-03-27	Coach X3-45, New platform, rear sub-frame. Included OC#2012082 New Front Suspension Beam Axle (#E-5586) Preliminary Vehicles #D-5538 , #D-5433 Production Vehicle #D-5459	-	Rob.	M.J.H.	M.J.H.



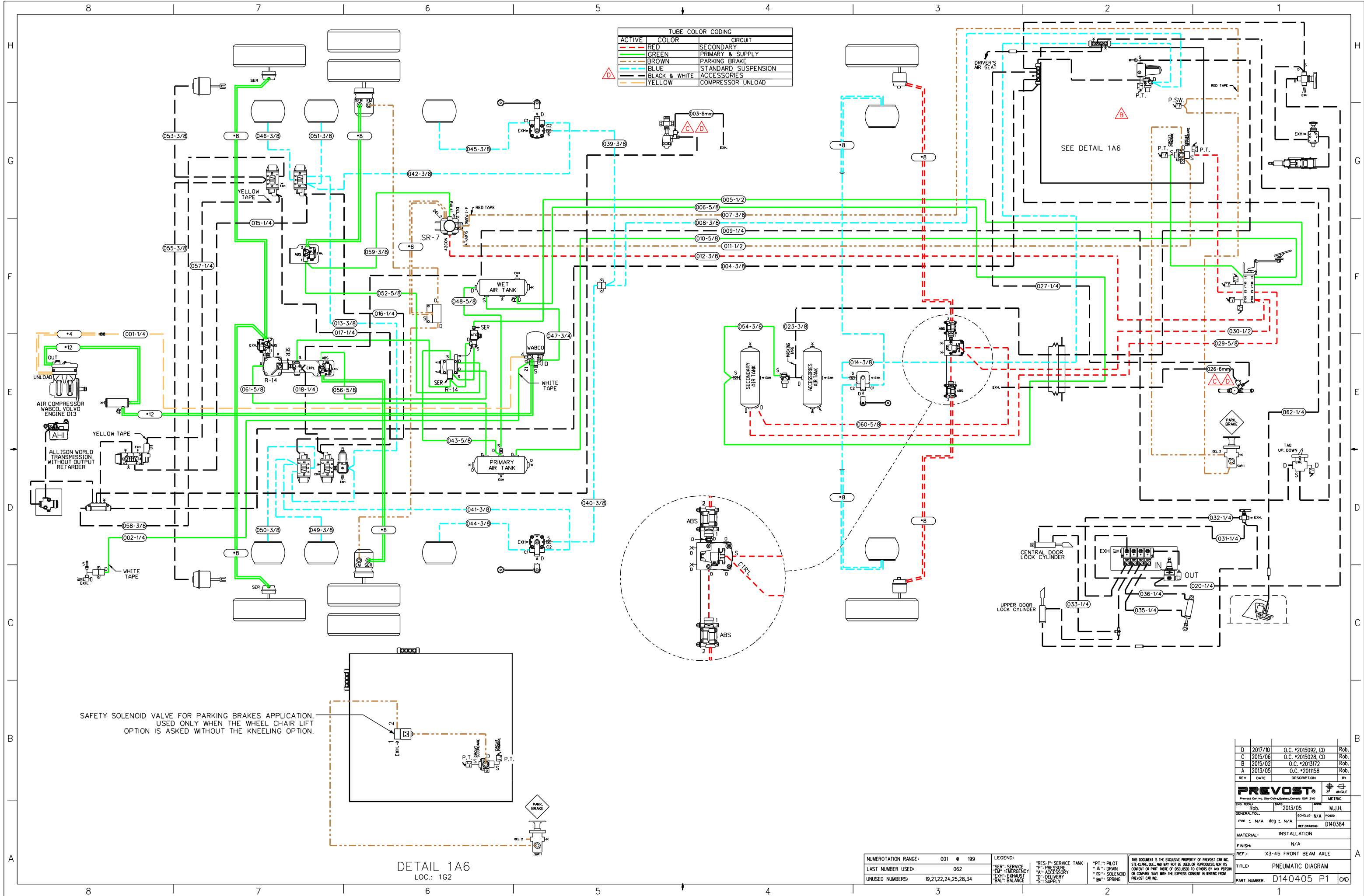






NUMEROTATION RANGE:	001 R 199	LEGEND:	*RES-1: SERVICE TANK *P1: PILOT *P2: PILOT *P3: PILOT *S: SOLENOID *SP: SPRING	THIS DOCUMENT IS THE EXCLUSIVE PROPERTY OF PREVOST CAR INC. NO PART OF THIS DOCUMENT IS TO BE REPRODUCED OR TRANSMITTED IN ANY FORM OR BY ANY MEANS, ELECTRONIC OR MECHANICAL, WITHOUT THE EXPRESS WRITTEN PERMISSION OF PREVOST CAR INC.
LAST NUMBER USED:	062	*SER: SERVICE *EM: EMERGENCY *EXH: EXHAUST *BAL: BALANCE	*P1: PILOT *P2: PILOT *P3: PILOT *S: SOLENOID *SP: SPRING	
UNUSED NUMBERS:	3,19,21,22,24,25,26,28,34,63,64			

REV	DATE	DESCRIPTION	BY
C	2015/06	O.C. #2015028, CD	Rob.
B	2015/02	O.C. #2013172	Rob.
A	2013/05	O.C. #2011588	Rob.
<b>PREVOST</b>			
GENERATOR:	Rob.	2013/05	M.J.H.
REV. DATE	deg ± N/A	COHLE: N/A	POSS:
MATERIAL:	INSTALLATION	REV. DRAWING:	D140384
FINISH:	N/A		
REF.:	X3-45 FRONT BEAM AXLE		
TITLE:	PNEUMATIC DIAGRAM		
PART NUMBER:	D140405 P1 CAD		



ACTIVE	COLOR	CIRCUIT
—	RED	SECONDARY
—	GREEN	PRIMARY & SUPPLY
—	BROWN	PARKING BRAKE
—	BLUE	STANDARD SUSPENSION
—	BLACK & WHITE	ACCESSORIES
—	YELLOW	COMPRESSOR UNLOAD

DETAIL 1A6  
LOC.: 1G2

SAFETY SOLENOID VALVE FOR PARKING BRAKES APPLICATION.  
USED ONLY WHEN THE WHEEL CHAIR LIFT  
OPTION IS ASKED WITHOUT THE KNEELING OPTION.

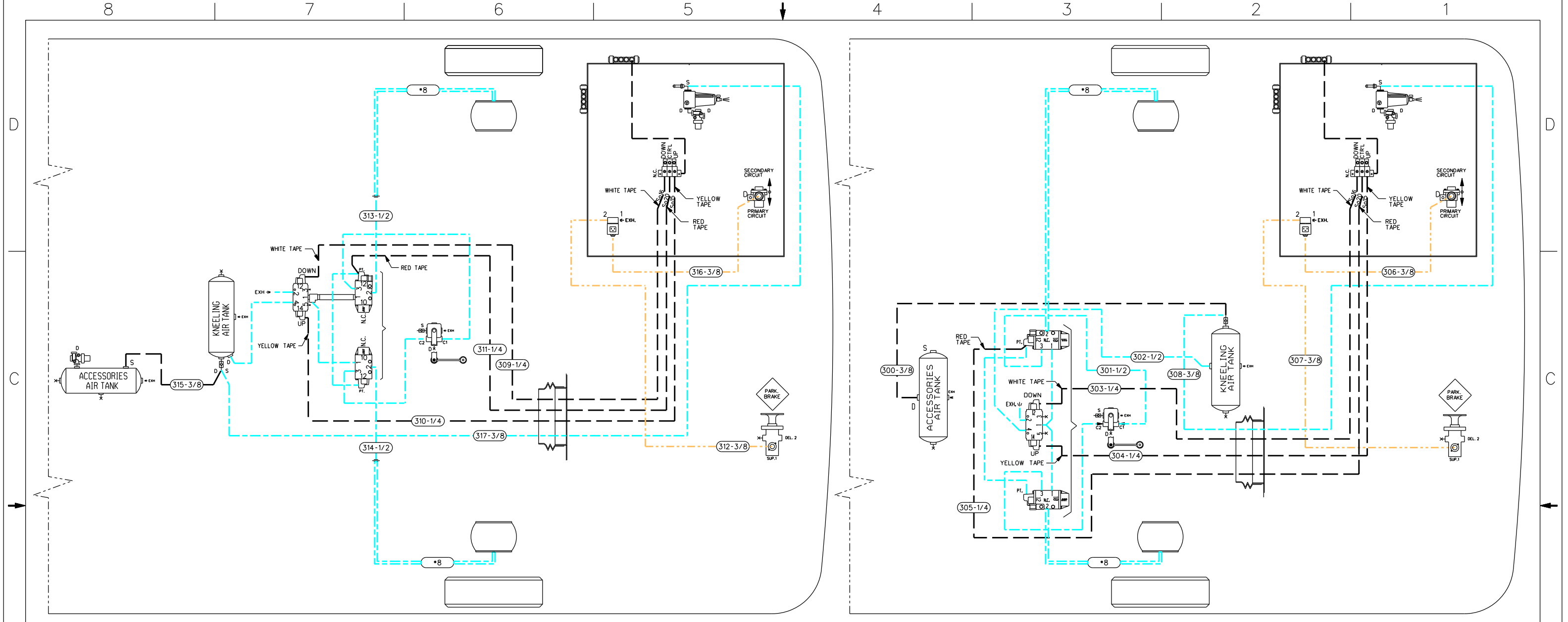
NUMERATION RANGE:	001 @ 199
LAST NUMBER USED:	062
UNUSED NUMBERS:	19,21,22,24,25,28,34

LEGEND:	"RES-": SERVICE TANK	"P.T.": PILOT
"SER-": SERVICE	"P-": PRESSURE	"A-": DRAIN
"EM-": EMERGENCY	"AT-": ACCESSORY	"SOL-": SOLENOID
"EXH-": EXHAUST	"D-": DELIVERY	"SP-": SPRING
"BAL-": BALANCE	"S-": SUPPLY	

THIS DOCUMENT IS THE EXCLUSIVE PROPERTY OF PREVOST CAR INC.  
SEE CLAUSE ONE, AND MAY NOT BE USED OR REPRODUCED, NOR ITS  
CONTENT OR PART THERE OF DISCLOSED TO OTHERS BY ANY PERSON  
OR COMPANY SAVE WITH THE EXPRESS CONSENT IN WRITING FROM  
PREVOST CAR INC.

REV	DATE	DESCRIPTION	BY
D	2017/10	O.C. *2015092, CD	Rob.
C	2015/06	O.C. *2015028, CD	Rob.
B	2015/02	O.C. *2013172	Rob.
A	2013/05	O.C. *2011158	Rob.

**PREVOST®**  
 Prevost Car Inc. 560-Chester-Chester, Canada Q8R 2V0  
 ENG. TECH: Rob. DATE: 2013/05 APPR: M.J.H.  
 GENERAL TOL: mm ± N/A deg ± N/A SCALE: N/A PROJ: D140384  
 MATERIAL: INSTALLATION  
 FINISH: N/A  
 REF.: X3-45 FRONT BEAM AXLE  
 TITLE: PNEUMATIC DIAGRAM  
 PART NUMBER: D140405 P1 CAD



WITH INDEPENDENT FRONT SUSPENSION OPTION

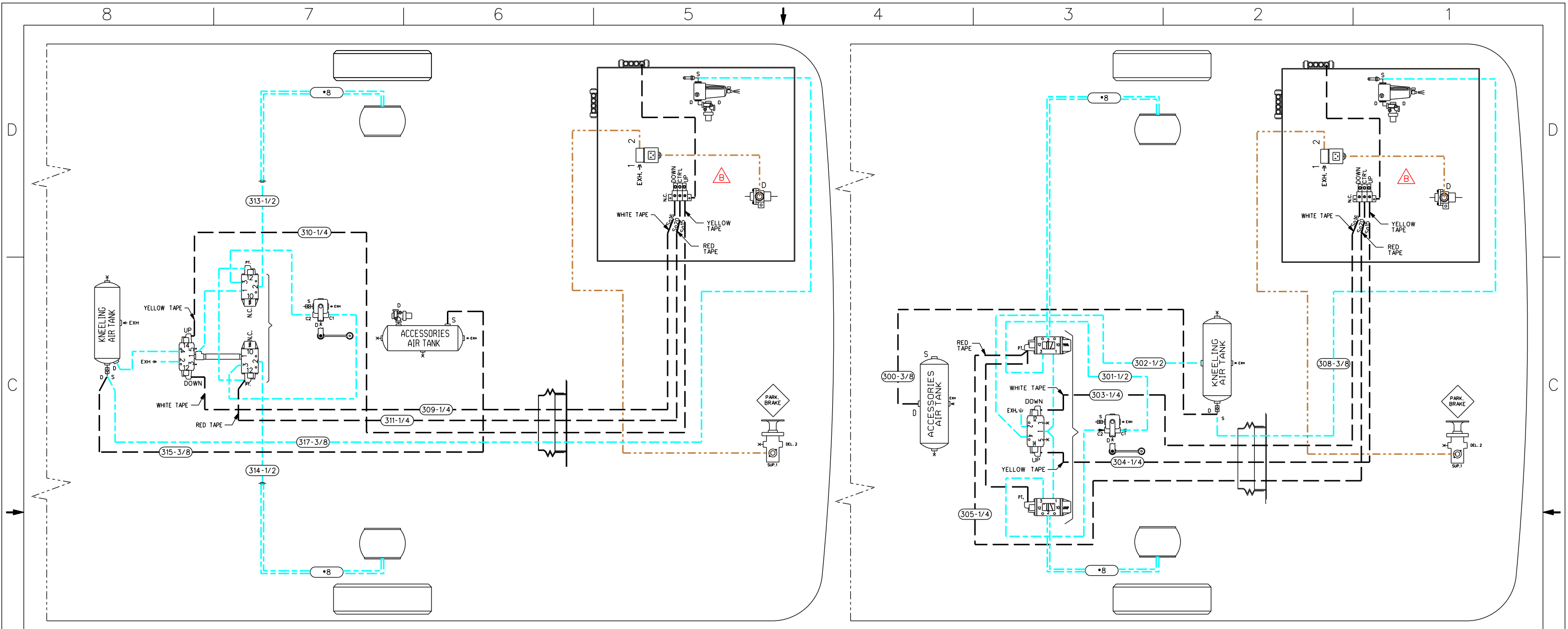
WITH FRONT BEAM AXLE OPTION

TUBE COLOR CODING		
LINE TYPE	COLOR	CIRCUIT
—	BLUE	SUSPENSION
- - -	YELLOW	PARKING BRAKES
- - -	BLACK	ACCESSORIES FOR SUSPENSION

NUMEROTATION RANGE:	300 @ 399	LEGEND:	"RES-1": SERVICE TANK	"PT.": PILOT
LAST NUMBER USED:	317	"SER": SERVICE	"P": PRESSURE	"A": DRAIN
UNUSED NUMBERS:	.	"EM": EMERGENCY	"A": ACCESSORY	"S": SOLENOID
		"EXH": EXHAUST	"D": DELIVERY	"SP": SPRING
		"BAL": BALANCE	"S": SUPPLY	

THIS DOCUMENT IS THE EXCLUSIVE PROPERTY OF PREVOST CAR INC. SITE-CLAMP, OUC, AND MAY NOT BE USED, OR REPRODUCED, NOR ITS CONTENT OR PART THERE OF DISCLOSED TO OTHERS BY ANY PERSON OR COMPANY SAVE WITH THE EXPRESS CONSENT IN WRITING FROM PREVOST CAR INC.

REV	DATE	DESCRIPTION	BY
A	2013/05	O.C. #2011158	Rob.
<b>PREVOST</b>			
Prevost Car Inc. Ste-Clotilde, Quebec, Canada G0R 2V0			
DATE:	2013/05	APPR:	M.J.H.
GENERAL TOL:	mm ± N/A deg ± N/A	ECHELLE:	N/A
MATERIAL:	INSTALLATION		
FINISH:	N/A		
REF.:	X3-45		
TITLE:	FRONT KNEELING OPTION		
PART NUMBER:	D140405 P3 CAD		



WITH INDEPENDENT FRONT SUSPENSION OPTION

WITH FRONT BEAM AXLE OPTION

TUBE COLOR CODING		
LINE TYPE	COLOR	CIRCUIT
—	BLUE	SUSPENSION
- - -	BROWN	PARKING BRAKES
—	BLACK	ACCESSORIES FOR SUSPENSION

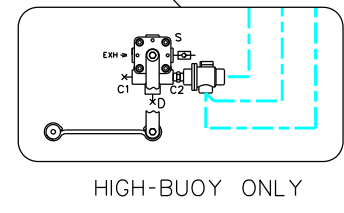
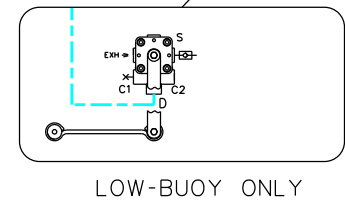
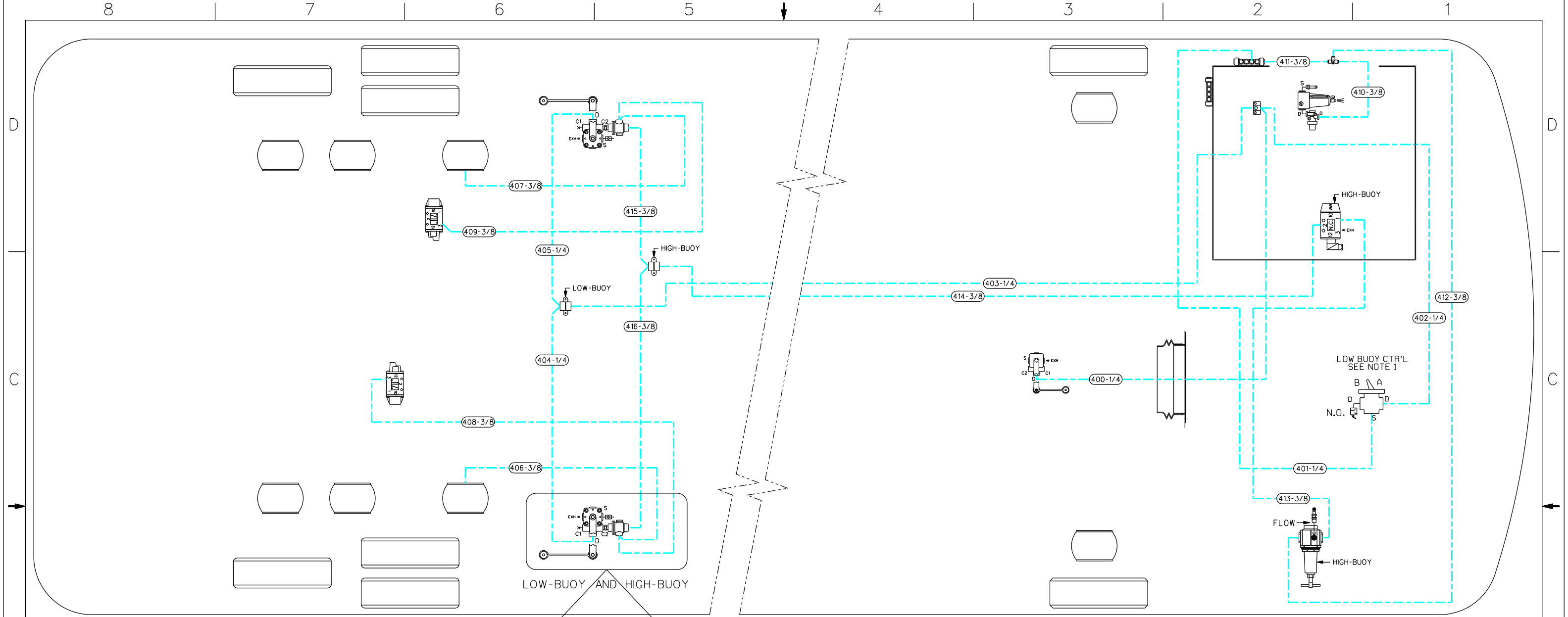
NUMEROTATION RANGE:	300 @ 399
LAST NUMBER USED:	317
UNUSED NUMBERS:	306,307,312,316

LEGEND:	"RES-1": SERVICE TANK	"PT.": PILOT
"SER": SERVICE	"P": PRESSURE	"A": DRAIN
"EM": EMERGENCY	"AC": ACCESSORY	"S": SOLENOID
"EXH": EXHAUST	"D": DELIVERY	"SP": SPRING
"BAL": BALANCE	"S": SUPPLY	

THIS DOCUMENT IS THE EXCLUSIVE PROPERTY OF PREVOST CAR INC. STE-CLAUDE, Q.C., AND MAY NOT BE USED, OR REPRODUCED, NOR ITS CONTENT OR PART THERE OF DISCLOSED TO OTHERS BY ANY PERSON OR COMPANY SAVE WITH THE EXPRESS CONSENT IN WRITING FROM PREVOST CAR INC.

B	2015/02	O.C. #2013172	Rob.
A	2013/05	O.C. #2011158	Rob.
REV	DATE	DESCRIPTION	BY
<b>PREVOST</b>			
Prevost Car Inc. Ste-Clau, Quebec, Canada G0R 2V0			
ENG. TECH:	Rob.	DATE: 2013/05	APPR: M.J.H.
GENERAL VOL.		SCALE: N/A	POSS:
mm ± N/A	deg ± N/A	REF. DRAWING: D140383	D140384
MATERIAL:	INSTALLATION		
FINISH:	N/A		
REF.:	X3-45		
TITLE:	FRONT KNEELING OPTION		
PART NUMBER:	D140405 P3 CAD		





TUBE COLOR CODING		
LINE TYPE	COLOR	CIRCUIT
- - - - -	BLUE	SUSPENSION

NOTE:  
 CONTROL VALVE OPT. "LOW-BUOY" , "A" OR "B" SETTING:  
 POSITION "A": VALVE IS OPEN,  
 AIR FLOW BETWEEN SUPPLY (S) AND  
 DELIVERY (D) , LOW-BUOY IS IN FUNCTION.  
 POSITION "B": VALVE CLOSED,  
 AIR DOES'NT FLOW BETWEEN SUPPLY (S) AND  
 DELIVERY (D) , LOW-BUOY IS NOT IN FUNCTION.

NUMEROTATION RANGE:	400	Ø	499
LAST NUMBER USED:	416		
UNUSED NUMBERS:			

LEGEND:	"RES-1": SERVICE TANK	"PT.": PILOT
"SER": SERVICE	"P": PRESSURE	"A": ACCESSORY
"EM": EMERGENCY	"A": ACCESSORY	"D": DELIVERY
"EXH": EXHAUST	"BAL": BALANCE	"S": SUPPLY
"S": SUPPLY	"PT.": PILOT	"A": ACCESSORY
"D": DELIVERY	"D": DELIVERY	"S": SUPPLY
"S": SUPPLY	"S": SUPPLY	"S": SUPPLY

THIS DOCUMENT IS THE EXCLUSIVE PROPERTY OF PREVOST CAR INC.  
 STE-CLAUDE, QUE., AND MAY NOT BE USED OR REPRODUCED, NOR ITS  
 CONTENT OR PART THERE OF DISCLOSED TO OTHERS BY ANY PERSON  
 OR COMPANY SAVE WITH THE EXPRESS CONSENT IN WRITING FROM  
 PREVOST CAR INC.

REV	DATE	DESCRIPTION	BY
A	2013/05	O.C. *2011158	Rob.

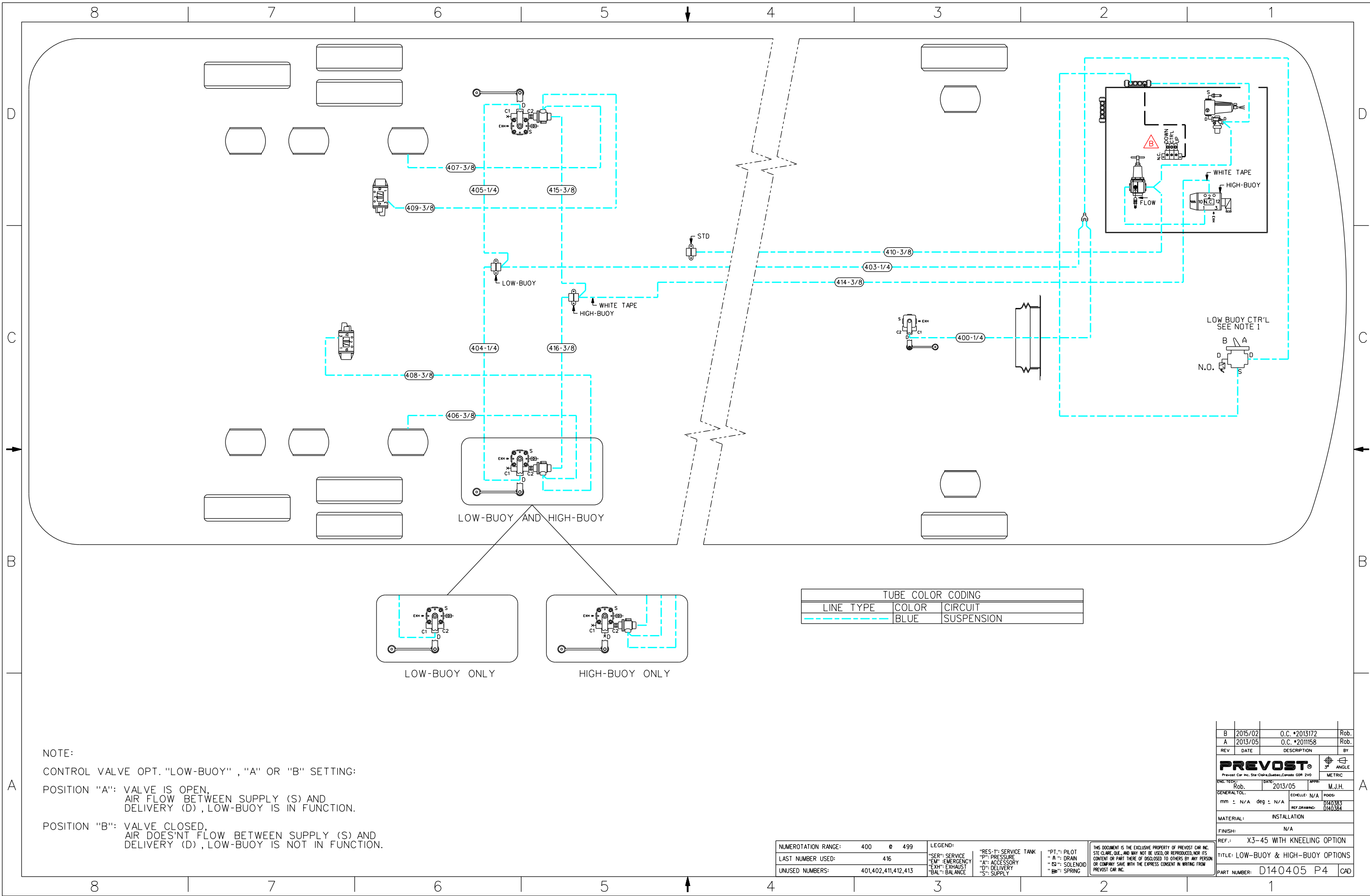
**PREVOST**  
 Prevost Car Inc. Ste-Clair, Quebec, Canada G0R 2V0

ENG. TECH:	DATE:	APPR:
Rob.	2013/05	M.J.H.

GENERAL TOL:  
 mm ± N/A deg ± N/A

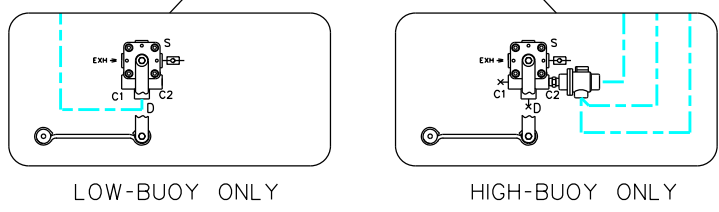
MATERIAL: INSTALLATION  
 FINISH: N/A  
 REF.: X3-45 WITH KNEELING OPTION

TITLE: LOW-BUOY & HIGH-BUOY OPTIONS  
 PART NUMBER: D140405 P4 CAD



NOTE:  
 CONTROL VALVE OPT. "LOW-BUOY", "A" OR "B" SETTING:  
 POSITION "A": VALVE IS OPEN,  
 AIR FLOW BETWEEN SUPPLY (S) AND  
 DELIVERY (D), LOW-BUOY IS IN FUNCTION.  
 POSITION "B": VALVE CLOSED,  
 AIR DOES'NT FLOW BETWEEN SUPPLY (S) AND  
 DELIVERY (D), LOW-BUOY IS NOT IN FUNCTION.

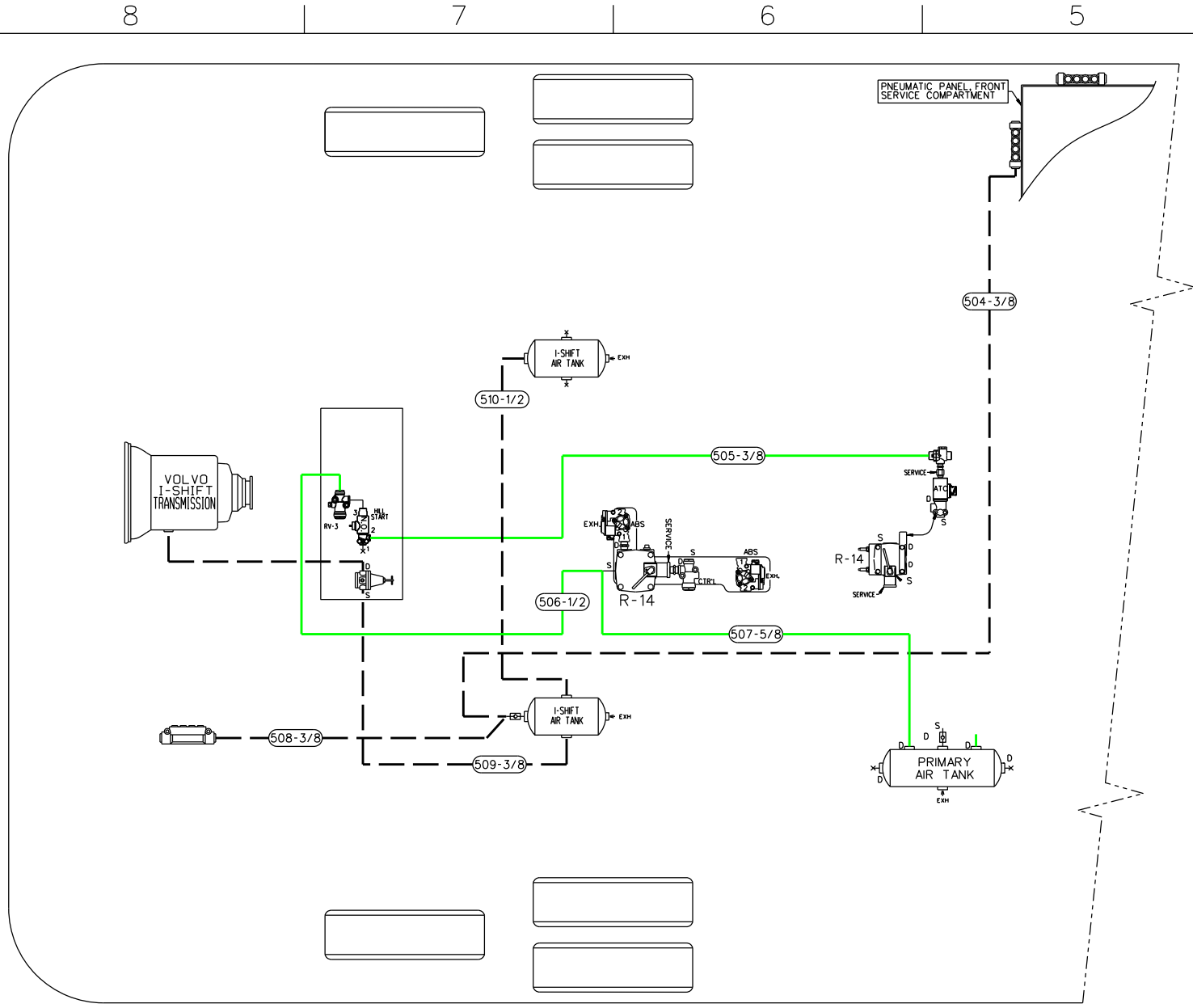
TUBE COLOR CODING		
LINE TYPE	COLOR	CIRCUIT
	BLUE	SUSPENSION



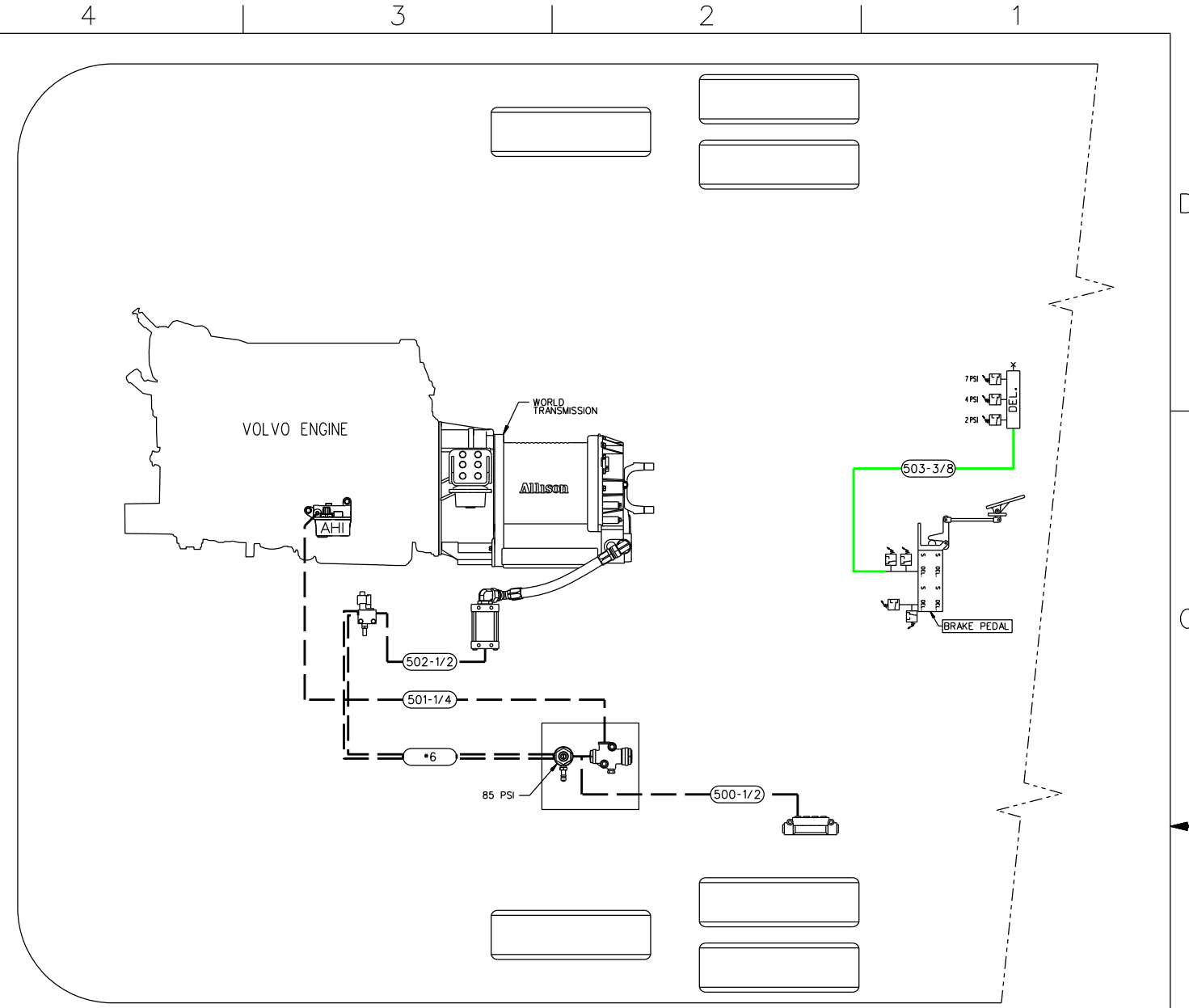
NUMEROTATION RANGE:	400 @ 499	LEGEND:	"RES-": SERVICE TANK	"PT-": PILOT
LAST NUMBER USED:	416	"SER-": SERVICE	"P-": PRESSURE	"A-": DRAIN
UNUSED NUMBERS:	401,402,411,412,413	"EM-": EMERGENCY	"A-": ACCESSORY	"ES-": SOLENOID
		"EXH-": EXHAUST	"D-": DELIVERY	"SP-": SPRING
		"BAL-": BALANCE	"S-": SUPPLY	

THIS DOCUMENT IS THE EXCLUSIVE PROPERTY OF PREVOST CAR INC.  
 STE-CLAUDE, QUE., AND MAY NOT BE USED, OR REPRODUCED, NOR ITS  
 CONTENT OR PART THERE OF DISCLOSED TO OTHERS BY ANY PERSON  
 OR COMPANY SAVE WITH THE EXPRESS CONSENT IN WRITING FROM  
 PREVOST CAR INC.

REV	DATE	DESCRIPTION	BY
B	2015/02	O.C. #2013172	Rob.
A	2013/05	O.C. #2011158	Rob.
ENG. TECH: Rob. GENERAL TOL. mm ± N/A deg ± N/A REF. DRAWING: D140383 D140384		DATE: 2013/05 APPR: M.J.H. POSP: D140383 D140384	
MATERIAL: INSTALLATION			
FINISH: N/A			
REF.: X3-45 WITH KNEELING OPTION			
TITLE: LOW-BUOY & HIGH-BUOY OPTIONS			
PART NUMBER: D140405 P4			CAD



I-SHIFT TRANSMISSION OPTION



ALLISON TRANSMISSION WITH RETARDER OPTION

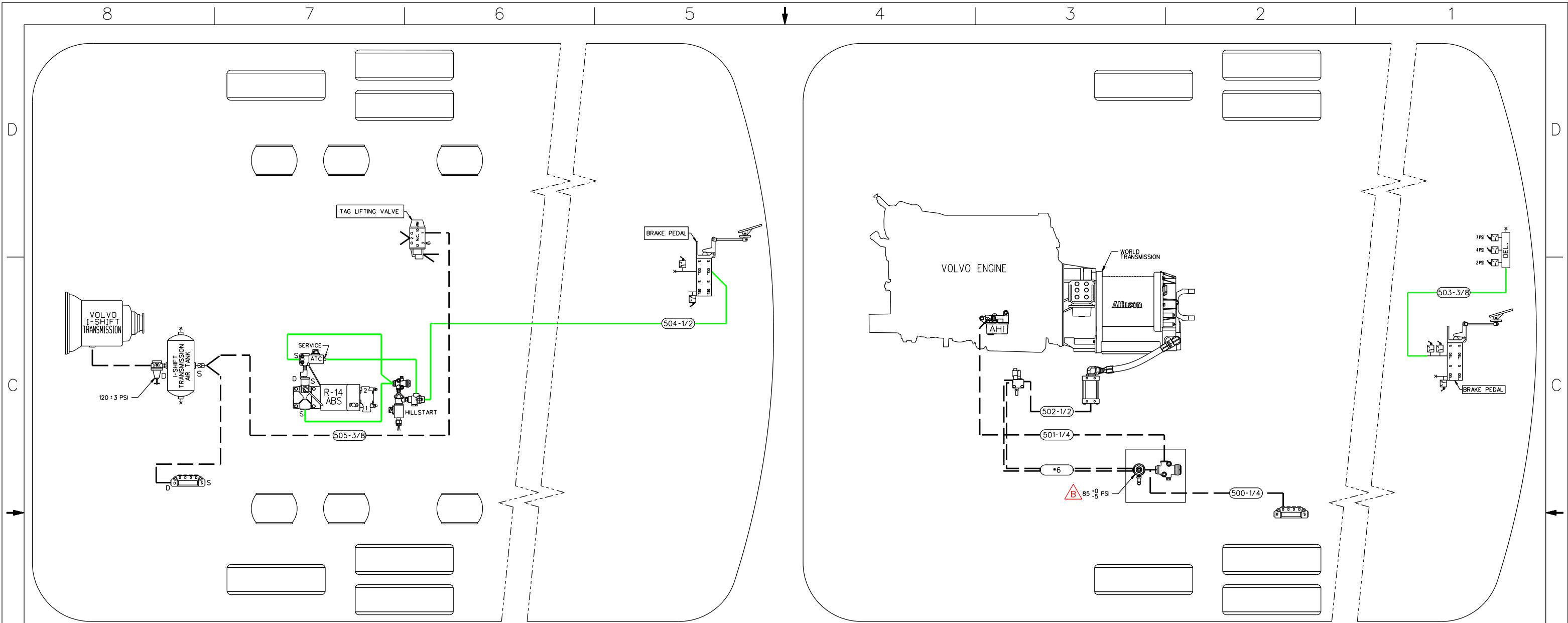
TUBE COLOR CODING		
—	COLOR	CIRCUIT
—	GREEN	PRIMARY & SUPPLY
—	BLACK	ACCESSORIES

NUMEROTATION RANGE:	500	599
LAST NUMBER USED:	510	
UNUSED NUMBERS:		

LEGEND:			
**SER**:	SERVICE TANK	**PT**:	PILOT
**EM**:	EMERGENCY	**A**:	ACCESSORY
**EXH**:	EXHAUST	**D**:	SOLENOID
**BAL**:	BALANCE	**S**:	SPRING

THIS DOCUMENT IS THE EXCLUSIVE PROPERTY OF PREVOST CAR INC. SITE-CLARE, QUE., AND MAY NOT BE USED OR REPRODUCED, NOR ITS CONTENT OR PART THERE OF DISCLOSED TO OTHERS BY ANY PERSON OR COMPANY SAVE WITH THE EXPRESS CONSENT IN WRITING FROM PREVOST CAR INC.

REV:	A	DATE:	2013/05	DESCRIPTION:	O.C. *2011158	BY:	Rob.
<small>Prevost Car Inc. Ste-Clair, Québec, Canada G0R 2V0</small>							METRIC
ENC. TECH:	Rob.	DATE:	2013/05	APPR:	M.J.H.		
GENERAL TOL:	mm ± N/A deg ± N/A		ECHELLE:	N/A	PODS:	D140383 D140384	
MATERIAL:	INSTALLATION						
FINISH:	N/A						
REF.:	X3-45						
TITLE: OPTIONS I-SHIFT OR ALLISON WITH RETARDER TRANSMISSION							PART NUMBER: D140405 P5 CAD



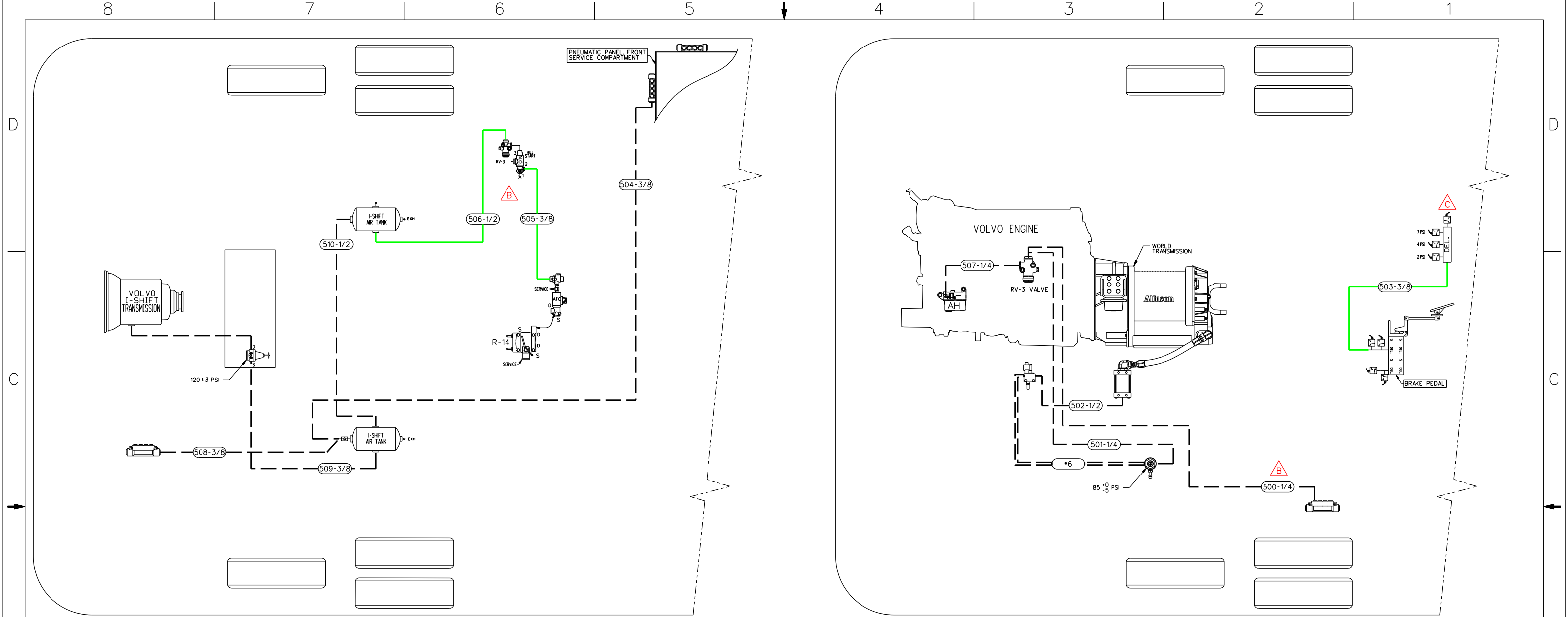
I-SHIFT TRANSMISSION OPTION

ALLISON TRANSMISSION WITH RETARDER OPTION

TUBE COLOR CODING		
ACTIVE	COLOR	CIRCUIT
—	GREEN	PRIMARY & SUPPLY
—	BLACK	ACCESSORIES

NUMEROTATION RANGE:	500 @ 599	LEGEND:	"RES-1": SERVICE TANK	"PT.": PILOT	THIS DOCUMENT IS THE EXCLUSIVE PROPERTY OF PREVOST CAR INC. SITE-CARE, Q.C. AND MAY NOT BE USED OR REPRODUCED NOR ITS CONTENT OR PART THERE OF DISCLOSED TO OTHERS BY ANY PERSON OR COMPANY SAVE WITH THE EXPRESS CONSENT IN WRITING FROM PREVOST CAR INC.
LAST NUMBER USED:	505	"SER": SERVICE	"P": PRESSURE	"A": DRAIN	
UNUSED NUMBERS:	-	"EM": EMERGENCY	"A": ACCESSORY	"S": SOLENOID	

B	2015/02	TOLERANCES ADDED	Rob.
A	2013/06	O.C. *2012125	Rob.
REV	DATE	DESCRIPTION	BY
<b>PREVOST</b>			
<small>Prevost Car Inc. Ste-Clotilde, Quebec, Canada G0R 2V0</small>			
ENG. TECH:	Rob.	DATE:	2013/06
APPR:	M.J.H.	SCALE:	N/A
GENERAL TOL.	mm ± N/A	deg ± N/A	POST:
REF. DRAWING:	D140380	D140381	
MATERIAL:	INSTALLATION		
FINISH:	N/A		
REF.:	H3-45		
TITLE:	OPTIONS I-SHIFT OR ALLISON WITH RETARDER TRANSMISSION		
PART NUMBER:	D140407	P5	CAD



I-SHIFT TRANSMISSION OPTION

ALLISON TRANSMISSION WITH RETARDER OPTION

TUBE COLOR CODING	
—	COLOR
—	CIRCUIT
—	PRIMARY & SUPPLY
—	ACCESSORIES

REV	DATE	DESCRIPTION	BY
C	2018/04	O.C. *2018011_CD	Rob.
B	2015/02	VIEW UPDATED O.C. *2013172	Rob.
A	2013/05	O.C. *2011158	Rob.

**PREVOST**  
 Prevost Car Inc. Ste-Clotilde, Quebec, Canada G0R 2V0

ENG. TECH: Rob. DATE: 2013/05 APPR: M.J.H.

GENERAL TOL. mm ± N/A deg ± N/A

ECHELLE: N/A POOS: 0140383 0140384

REF. DRAWING: 0140383 0140384

MATERIAL: INSTALLATION

FINISH: N/A

REF.: X3-45

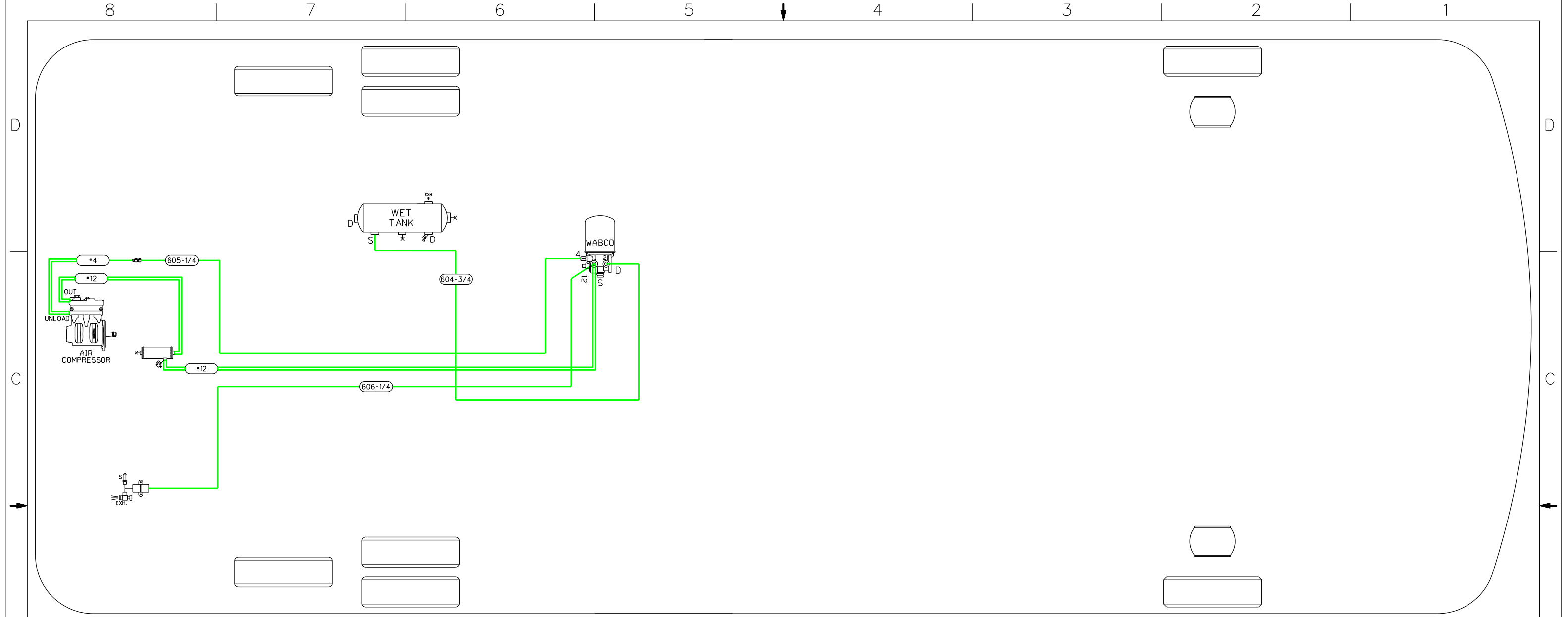
TITLE: OPTIONS I-SHIFT OR ALLISON WITH RETARDER TRANSMISSION

PART NUMBER: D140405 P5 CAD

NUMEROTATION RANGE:	500 @ 599
LAST NUMBER USED:	510
UNUSED NUMBERS:	.

LEGEND:	
"SER": SERVICE	"RES-1": SERVICE TANK
"EM": EMERGENCY	"PT": PILOT
"EXH": EXHAUST	"P": PRESSURE
"BAL": BALANCE	"A": ACCESSORY
"S": SUPPLY	"D": DELIVERY
	"ES": SOLENOID
	"SP": SPRING

THIS DOCUMENT IS THE EXCLUSIVE PROPERTY OF PREVOST CAR INC. STE-CLAUDE, QUE., AND MAY NOT BE USED OR REPRODUCED, NOR ITS CONTENT OR PART THERE OF DISCLOSED TO OTHERS BY ANY PERSON OR COMPANY SAVE WITH THE EXPRESS CONSENT IN WRITING FROM PREVOST CAR INC.



ELECTRICAL WABCO AIR DRYER LOCATE IN REAR SUB-FRAME  
 OR  
 ELECTRICAL WABCO AIR DRYER, OPTIONAL LOCATE IN WATER HEATER COMPARTMENT

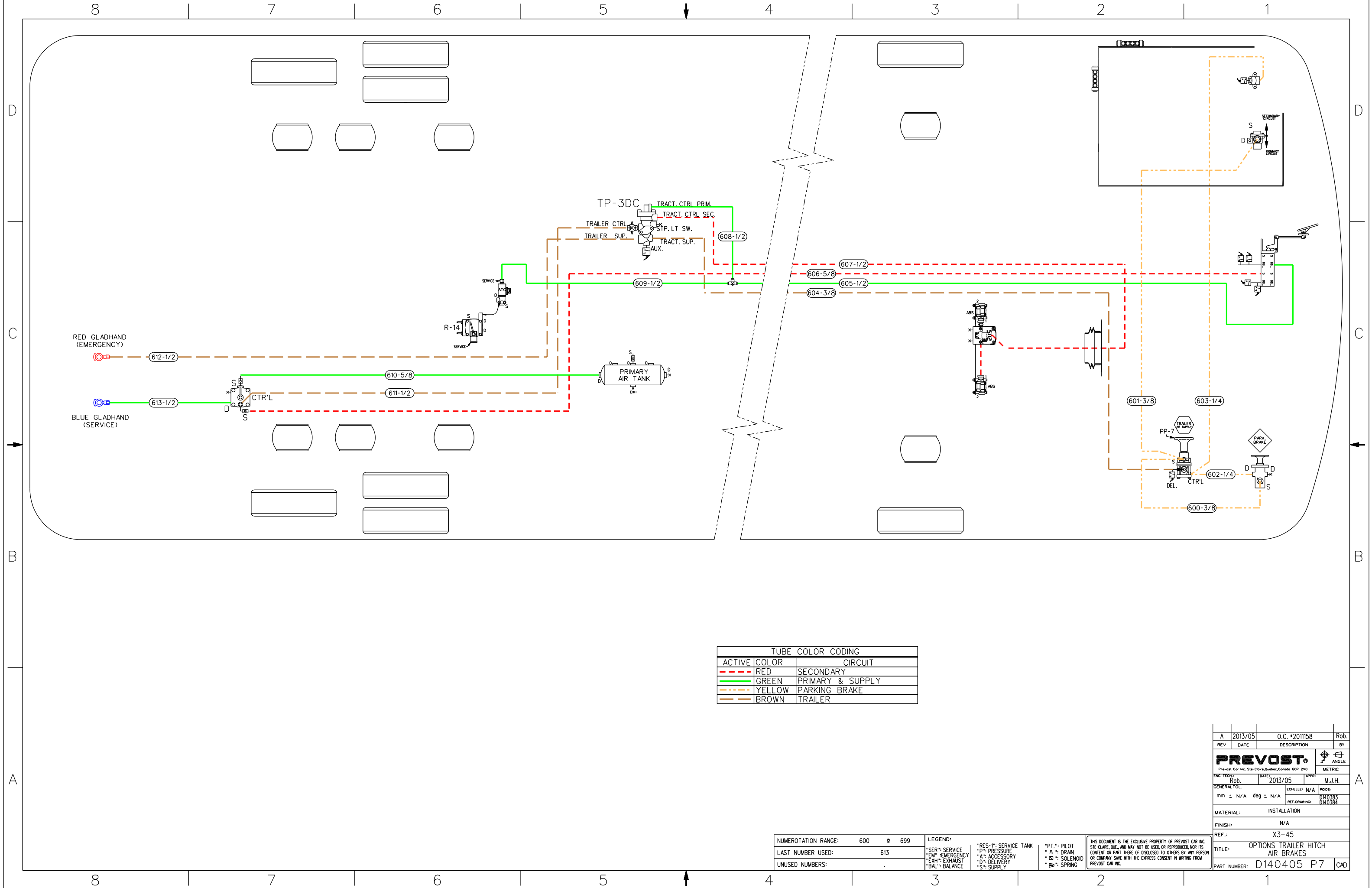
TUBE COLOR CODING		
ACTIVE	COLOR	CIRCUIT
—	GREEN	PRIMARY & SUPPLY
—	BLACK	ACCESSORIES

NUMEROTATION RANGE:	600	699
LAST NUMBER USED:	606	
UNUSED NUMBERS:		

LEGEND:	"RES-": SERVICE TANK	"PT-": PILOT
"SER-": SERVICE	"P-": PRESSURE	"A-": DRAIN
"EM-": EMERGENCY	"A-": ACCESSORY	"SI-": SOLENOID
"EXH-": EXHAUST	"D-": DELIVERY	"SP-": SPRING
"BAL-": BALANCE	"S-": SUPPLY	

THIS DOCUMENT IS THE EXCLUSIVE PROPERTY OF PREVOST CAR INC. STE-CLAUDE, QUE., AND MAY NOT BE USED, OR REPRODUCED, NOR ITS CONTENT OR PART THERE OF DISCLOSED TO OTHERS BY ANY PERSON OR COMPANY SAVE WITH THE EXPRESS CONSENT IN WRITING FROM PREVOST CAR INC.

REV	DATE	DESCRIPTION	BY
A	2013/05	O.C. #2011158	Rob.
			 ANGLE  METRIC
ENG. TECH:	Rob.	DATE: 2013/05	APPR: M.J.H.
GENERAL TOL.	mm ± N/A	deg ± N/A	ECHELLE: N/A
			PODS: D140383
			REF. DRAWING: D140384
MATERIAL:	INSTALLATION		
FINISH:	N/A		
REF.:	X3-45		
TITLE:	AIR DRYER IN REAR SUB-FRAME OR WATER HEATER COMPARTMENT OPTION		
PART NUMBER:	D140405 P6	CAD	



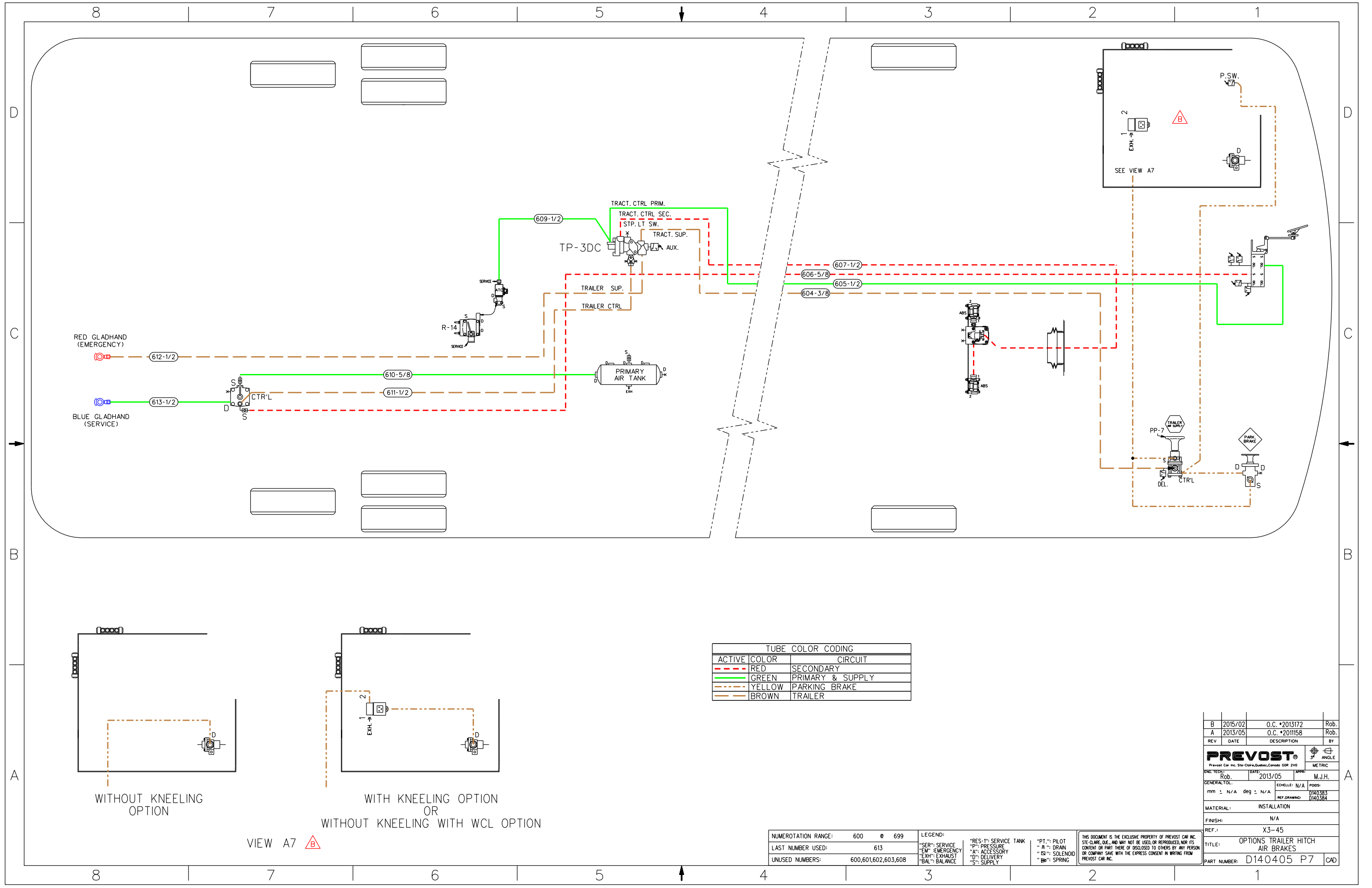
TUBE COLOR CODING		
ACTIVE	COLOR	CIRCUIT
- - -	RED	SECONDARY
— — —	GREEN	PRIMARY & SUPPLY
- - -	YELLOW	PARKING BRAKE
- - -	BROWN	TRAILER

NUMEROTATION RANGE:	600 @ 699
LAST NUMBER USED:	613
UNUSED NUMBERS:	.

LEGEND:	"RES-": SERVICE TANK	"PT-": PILOT
"SER-": SERVICE	"P-": PRESSURE	"A-": DRAIN
"EM-": EMERGENCY	"A-": ACCESSORY	"ED-": SOLENOID
"EXH-": EXHAUST	"D-": DELIVERY	"S-": SPRING
"BAL-": BALANCE	"S-": SUPPLY	

THIS DOCUMENT IS THE EXCLUSIVE PROPERTY OF PREVOST CAR INC. STE-CLAUDE, QUE., AND MAY NOT BE USED, OR REPRODUCED, NOR ITS CONTENT OR PART THERE OF DISCLOSED TO OTHERS BY ANY PERSON OR COMPANY SAVE WITH THE EXPRESS CONSENT IN WRITING FROM PREVOST CAR INC.

REV	DATE	DESCRIPTION	BY
A	2013/05	O.C. #2011158	Rob.
<b>PREVOST</b>			
Prevost Car Inc. Ste-Clair, Quebec, Canada G0R 2V0			
ENG. TECH:	DATE:	APPR:	ANGLE
Rob.	2013/05	M.J.H.	3°
GENERAL TOL:	ECHELLE: N/A	PODS:	METRIC
mm ± N/A	deg ± N/A	REF. DRAWING: D140383	
		D140384	
MATERIAL:	INSTALLATION		
FINISH:	N/A		
REF.:	X3-45		
TITLE:	OPTIONS TRAILER HITCH AIR BRAKES		
PART NUMBER:	D140405 P7 CAD		



RED GLADHAND  
(EMERGENCY)

BLUE GLADHAND  
(SERVICE)

TP-3DC

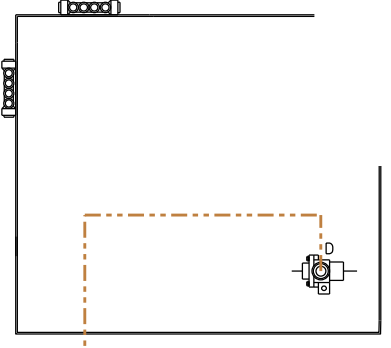
TRACT. CTRL PRIM.  
TRACT. CTRL SEC.  
STP. LT SW.  
TRACT. SUP.  
TRACT. AUX.

PRIMARY AIR TANK

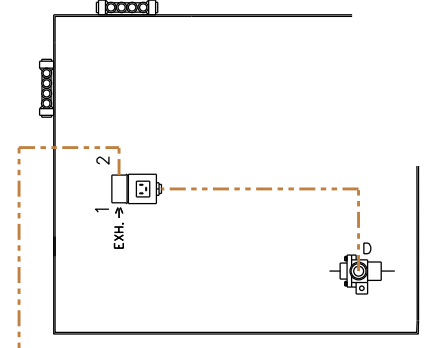
TRAILER SUP.  
TRAILER CTRL

SEE VIEW A7

TUBE COLOR CODING	
ACTIVE COLOR	CIRCUIT
RED	SECONDARY
GREEN	PRIMARY & SUPPLY
YELLOW	PARKING BRAKE
BROWN	TRAILER



WITHOUT KNEELING OPTION



WITH KNEELING OPTION  
OR  
WITHOUT KNEELING WITH WCL OPTION

VIEW A7

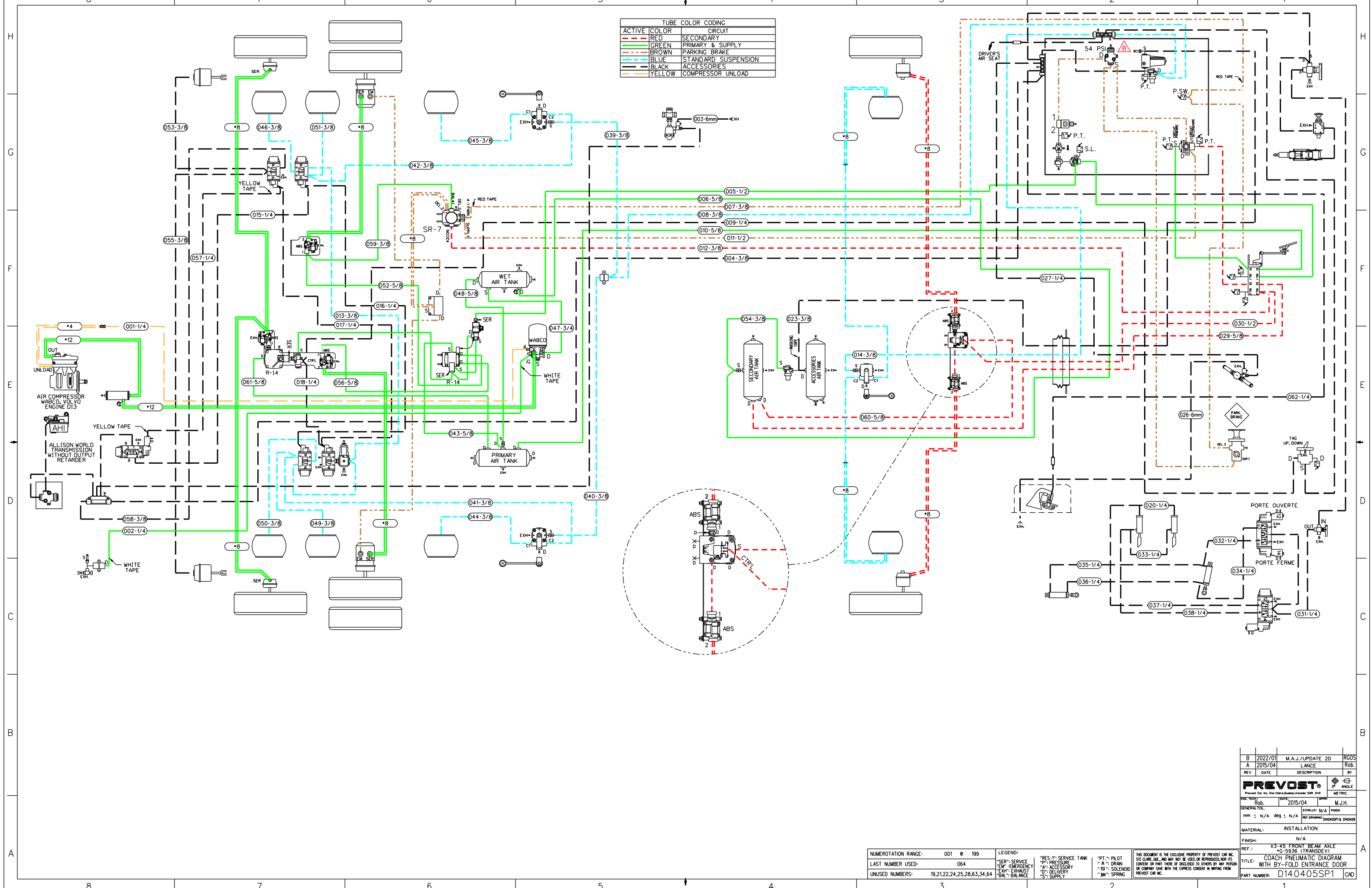
NUMEROTATION RANGE:	600 @ 699
LAST NUMBER USED:	613
UNUSED NUMBERS:	600,601,602,603,608

LEGEND:	"RES-1": SERVICE TANK	"PT.": PILOT
"SER": SERVICE	"P": PRESSURE	"A": DRAIN
"EM": EMERGENCY	"A": ACCESSORY	"SI": SOLENOID
"EXH": EXHAUST	"D": DELIVERY	"SP": SPRING
"BAL": BALANCE	"S": SUPPLY	

THIS DOCUMENT IS THE EXCLUSIVE PROPERTY OF PREVOST CAR INC. STE-CLAIRE, Q.C. AND MAY NOT BE USED, OR REPRODUCED, NOR ITS CONTENT OR PART THERE OF DISCLOSED TO OTHERS BY ANY PERSON OR COMPANY SAVE WITH THE EXPRESS CONSENT IN WRITING FROM PREVOST CAR INC.

REV	DATE	DESCRIPTION	BY
B	2015/02	O.C. #2013172	Rob.
A	2013/05	O.C. #2011158	Rob.
<p><b>PREVOST</b></p> <p>Prevost Car Inc. Ste-Claire, Quebec, Canada G0R 2V0</p> <p>37° ANGLE METRIC</p>			
ENG. TECHNIC	Rob.	DATE	2013/05
APPR.	M.J.H.	SCALE	N/A
GENERAL TOL.	mm ± N/A	deg ± N/A	POSS.
REF. DRAWING:	D140383	D140384	
MATERIAL:	INSTALLATION		
FINISH:	N/A		
REF.:	X3-45		
TITLE:	OPTIONS TRAILER HITCH AIR BRAKES		
PART NUMBER:	D140405 P7 CAD		





ACTIVE COLOR	SECONDARY CIRCUIT
RED	SECONDARY
GREEN	PRIMARY & SUPPLY
BROWN	PARKING BRAKE
BLUE	STANDARD SUSPENSION
BLACK	ACCESSORIES
YELLOW	COMPRESSOR UNLOAD

NUMEROTATION RANGE:	001 @ 199
LAST NUMBER USED:	064
UNUSED NUMBERS:	19,21,22,24,25,28,63,34,64

LEGEND:	"RES-": SERVICE TANK	"P1-": PILOT
"SER-": SERVICE	"P-": PRESSURE	"A-": DRAIN
"EM-": EMERGENCY	"A-": ACCESSORY	"D-": DELIVERY
"EXH-": EXHAUST	"D-": DELIVERY	"S-": SUPPLY
"BAL-": BALANCE	"S-": SUPPLY	

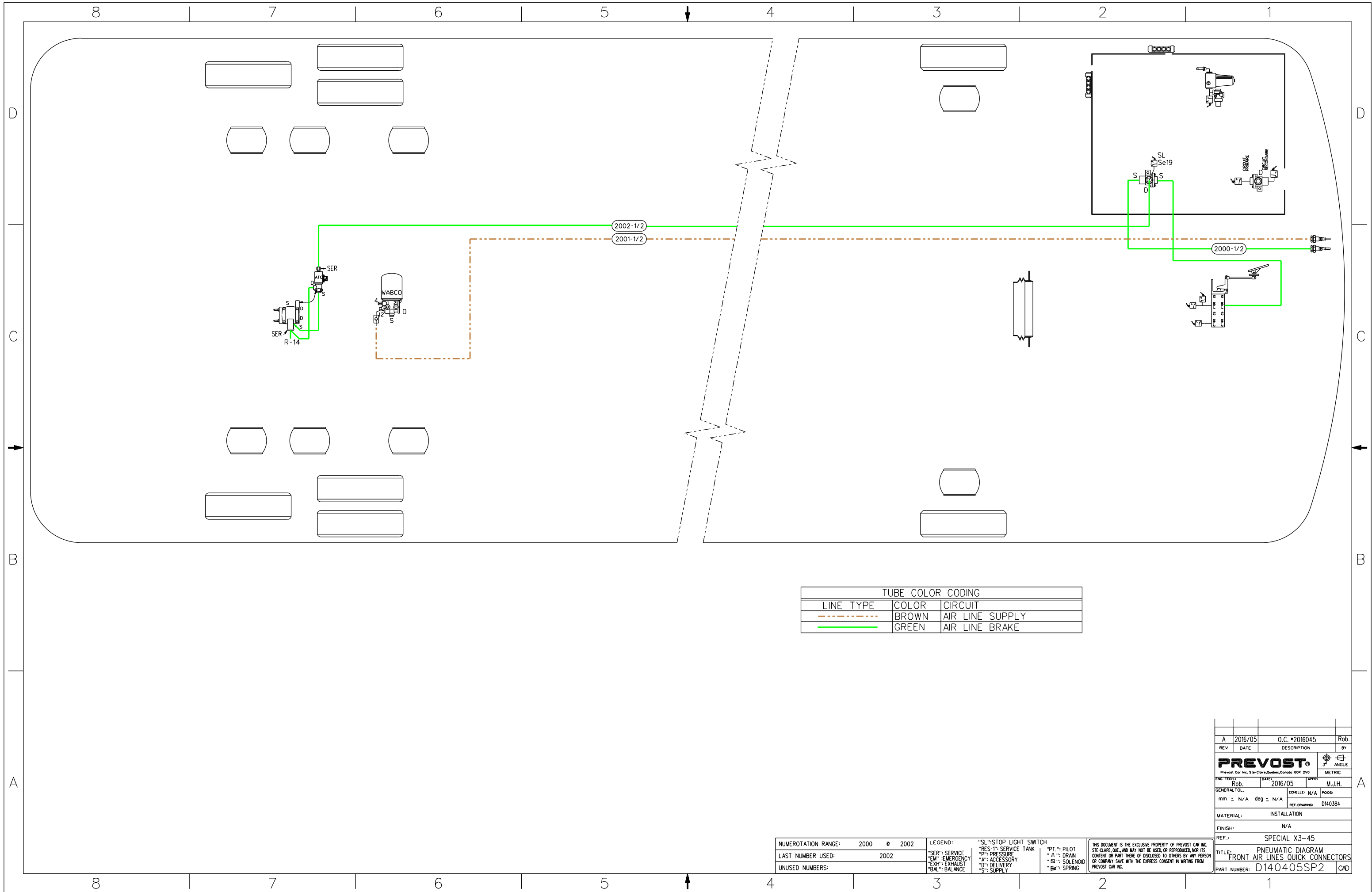
THIS DOCUMENT IS THE EXCLUSIVE PROPERTY OF PREVOST CAR INC. SITE-CLEAR, O.K. AND MAY NOT BE USED OR REPRODUCED, NOW OR IN THE FUTURE, WITHOUT THE EXPRESS WRITTEN CONSENT OF PREVOST CAR INC.

REF.: X3-45 FRONT BEAM AXLE  
 \*G-5936 (TRANSDEV)

TITLE: COACH PNEUMATIC DIAGRAM WITH BY-FOLD ENTRANCE DOOR

PART NUMBER: D140405SP1 CAD

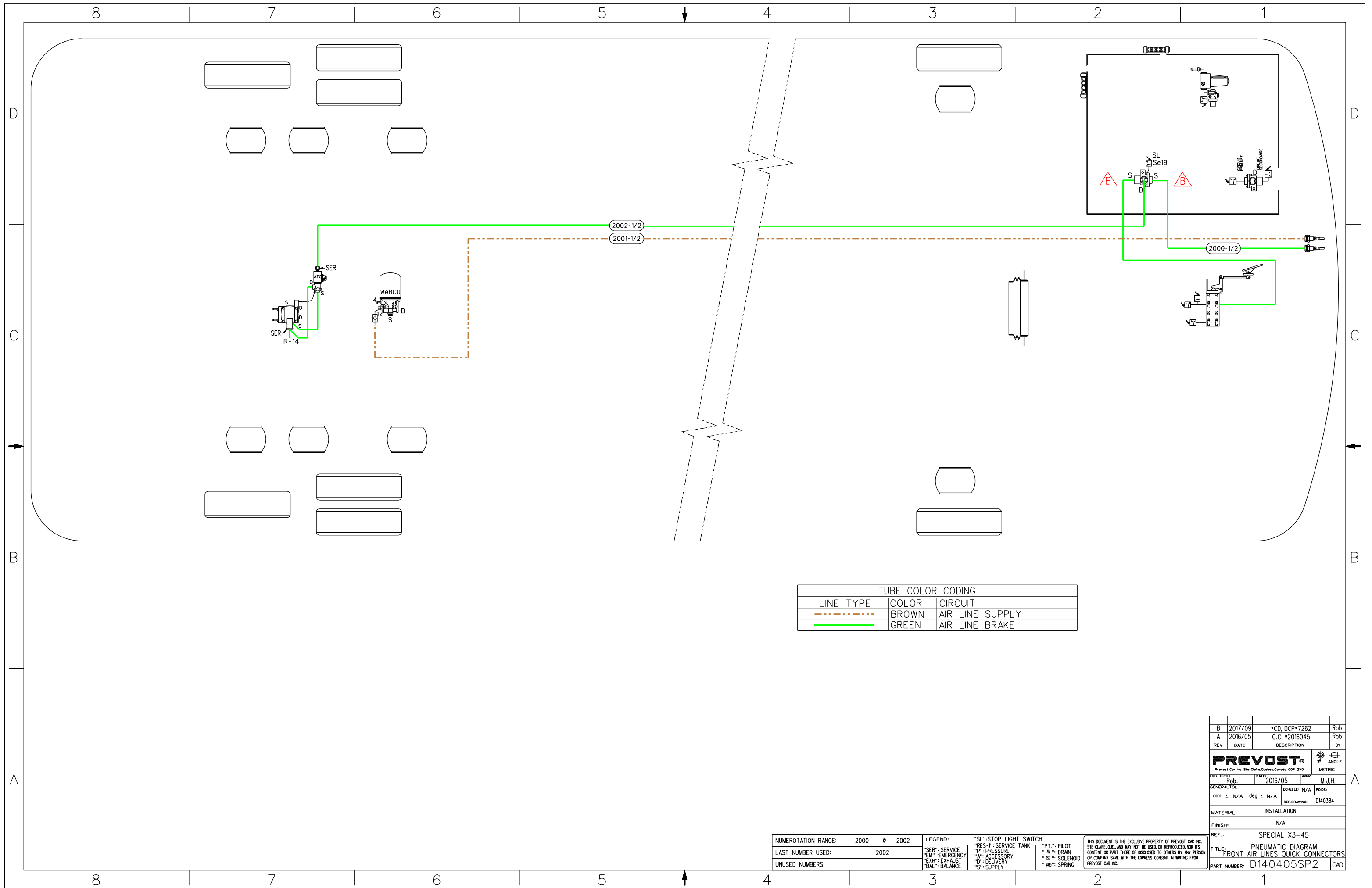
B	2022/01	M.A.J./UPDATE 2D	RGOS
A	2015/04	LANCE	Rob.
REV	DATE	DESCRIPTION	BY
INC/VEH:	Rob.	2015/04	M.J.H.
GENERAL TOL:	mm : N/A	deg : N/A	REF: DRAWING 040405P1 & 040409
MATERIAL:	INSTALLATION		
FINISH:	N/A		



TUBE COLOR CODING		
LINE TYPE	COLOR	CIRCUIT
---	BROWN	AIR LINE SUPPLY
---	GREEN	AIR LINE BRAKE

NUMERATION RANGE:	2000 @ 2002	LEGEND:	"SL": STOP LIGHT SWITCH	"RES-T": SERVICE TANK	"PT": PILOT	THIS DOCUMENT IS THE EXCLUSIVE PROPERTY OF PREVOST CAR INC. STE-CLEMP, QUE., AND MAY NOT BE USED, OR REPRODUCED, NOR ITS CONTENT OR PART THERE OF DISCLOSED TO OTHERS BY ANY PERSON OR COMPANY SAVE WITH THE EXPRESS CONSENT IN WRITING FROM PREVOST CAR INC.
LAST NUMBER USED:	2002	"SER": SERVICE	"P": PRESSURE	"A": ACCESSORY	"D": DELIVERY	
UNUSED NUMBERS:		"EM": EMERGENCY	"EXH": EXHAUST	"BAL": BALANCE	"S": SUPPLY	

REV	DATE	DESCRIPTION	BY
A	2016/05	O.C. #2016045	Rob.
<b>PREVOST</b> Prevost Car Inc. 514-Cote-De-Du-Roi, Canada G0M 2V0			
ENG. TECH:	DATE:	APPR:	
Rob.	2016/05	M.J.H.	
GENERAL TOL:	mm ± N/A	deg ± N/A	PODS
			REF. DRAWING: D140384
MATERIAL:	INSTALLATION		
FINISH:	N/A		
REF.:	SPECIAL X3-45		
TITLE:	PNEUMATIC DIAGRAM FRONT AIR LINES QUICK CONNECTORS		
PART NUMBER:	D140405SP2		



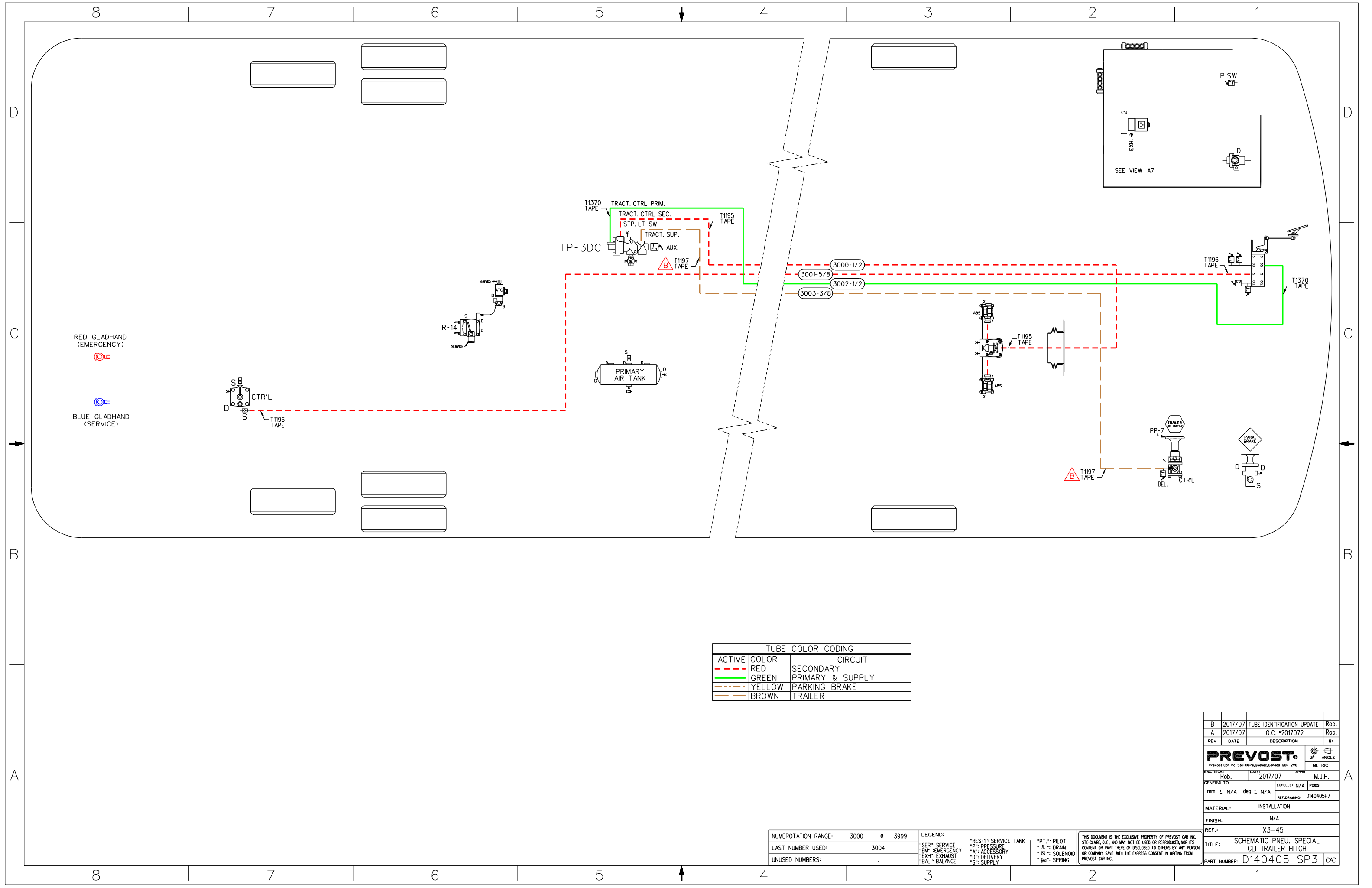
TUBE COLOR CODING		
LINE TYPE	COLOR	CIRCUIT
---	BROWN	AIR LINE SUPPLY
---	GREEN	AIR LINE BRAKE

NUMEROTATION RANGE:	2000	•	2002
LAST NUMBER USED:	2002		
UNUSED NUMBERS:			

LEGEND:	"SL": STOP LIGHT SWITCH
"RES": SERVICE TANK	"PT": PILOT
"P": PRESSURE	"A": DRAIN
"A": ACCESSORY	"S": SOLENOID
"EM": EMERGENCY	"S": SPRING
"EXH": EXHAUST	
"BAL": BALANCE	
"D": DELIVERY	
"S": SUPPLY	

THIS DOCUMENT IS THE EXCLUSIVE PROPERTY OF PREVOST CAR INC. SITE: CLARE, QUE., AND MAY NOT BE USED, OR REPRODUCED, NOR ITS CONTENT OR PART THERE OF DISCLOSED TO OTHERS BY ANY PERSON OR COMPANY SAVE WITH THE EXPRESS CONSENT IN WRITING FROM PREVOST CAR INC.

REV	DATE	DESCRIPTION	BY
B	2017/09	*CD, DCP*7262	Rob.
A	2016/05	O.C. *2016045	Rob.
ENG. TECH: Rob.		DATE: 2016/05	APPR: M.J.H.
GENERAL TOL: mm ± N/A deg ± N/A		ECHELLE: N/A POOS: REF. DRAWING: D140384	
MATERIAL: INSTALLATION			
FINISH: N/A			
REF.: SPECIAL X3-45			
TITLE: PNEUMATIC DIAGRAM FRONT AIR LINES QUICK CONNECTORS			
PART NUMBER: D140405SP2		CAD	



TUBE COLOR CODING	
ACTIVE COLOR	CIRCUIT
RED	SECONDARY
GREEN	PRIMARY & SUPPLY
YELLOW	PARKING BRAKE
BROWN	TRAILER

NUMEROTATION RANGE:	3000 @ 3999
LAST NUMBER USED:	3004
UNUSED NUMBERS:	.

LEGEND:	"RES-1": SERVICE TANK	"PT.": PILOT
"SER": SERVICE	"P": PRESSURE	"A": DRAIN
"EM": EMERGENCY	"A": ACCESSORY	"S": SOLENOID
"EXH": EXHAUST	"D": DELIVERY	"SP": SPRING
"BAL": BALANCE	"S": SUPPLY	

THIS DOCUMENT IS THE EXCLUSIVE PROPERTY OF PREVOST CAR INC. STE-CLAUDE, Q.C. AND MAY NOT BE USED, OR REPRODUCED, NOR ITS CONTENT OR PART THERE OF DISCLOSED TO OTHERS BY ANY PERSON OR COMPANY SAVE WITH THE EXPRESS CONSENT IN WRITING FROM PREVOST CAR INC.

REV	DATE	DESCRIPTION	BY
B	2017/07	TUBE IDENTIFICATION UPDATE	Rob.
A	2017/07	O.C. #2017072	Rob.
ENG. TECHNIC	DATE	APPR.	METRIC
Rob.	2017/07	M.J.H.	3/8 ANGLE
GENERAL TOL.	ECHELLE:	N/A	PODS:
mm : N/A deg ± N/A	REF. DRAWING:	D140405P7	
MATERIAL:	INSTALLATION		
FINISH:	N/A		
REF.:	X3-45		
TITLE:	SCHEMATIC PNEU. SPECIAL GLI TRAILER HITCH		
PART NUMBER:	D140405 SP3 CAD		