

Pneumatic diagram

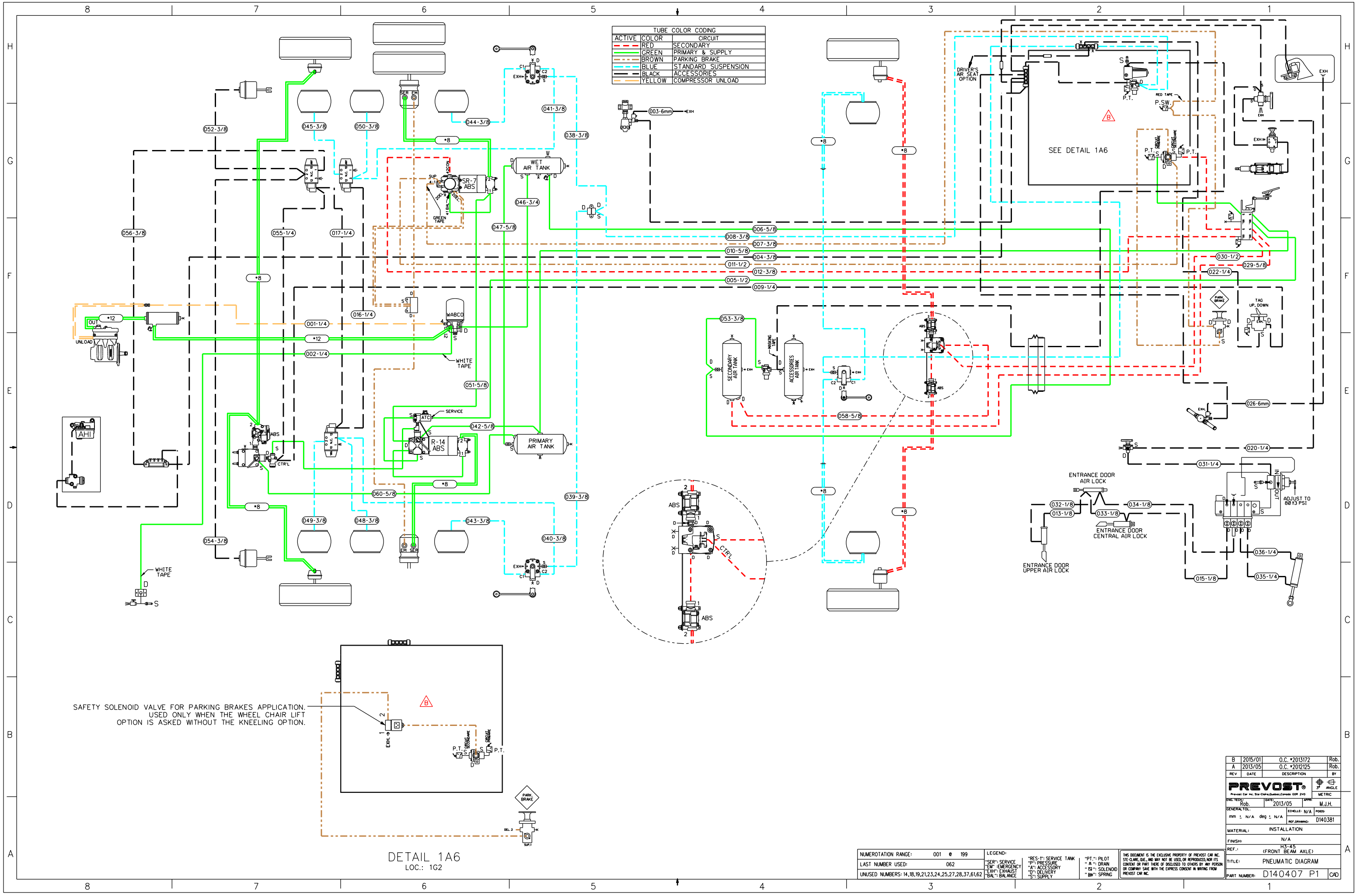
PNEUMATIC DIAGRAMS H3-45 COACHES

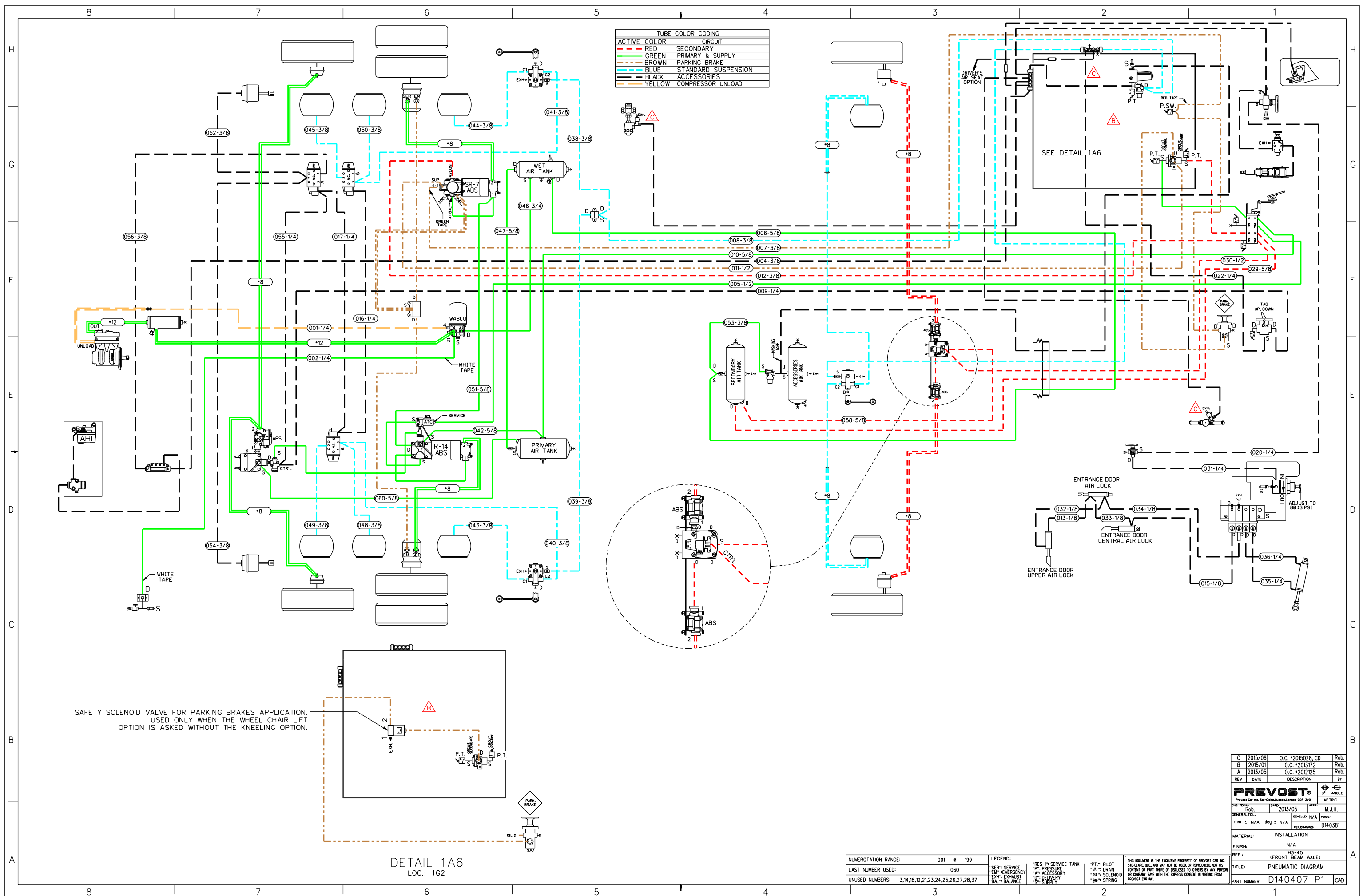
NO:	D140407P0	REVISION :	J
------------	------------------	-------------------	----------

EFF. OC#	N/A	PRIOR TO OC#	
EFF. VEH#	N/A	PRIOR TO VEH#	

DR.	R. Bouillon	date	2022-02-24
CHK	Pierre-Olivier Lachance	appr	Pierre-Olivier Lachance

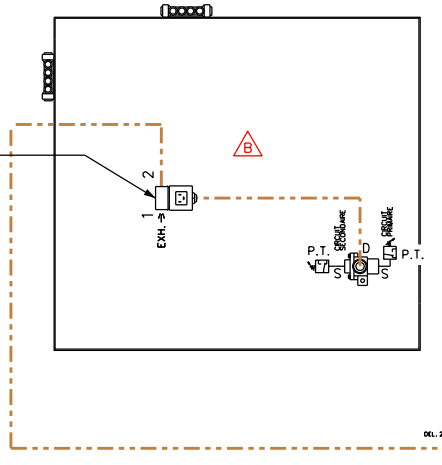
REV.	DATE	DESCRIPTION	PAGE	BY	CHK.	APPR.
A	2013-07-16	Coach H3-45, New platform, rear sub-frame OC #2012125. Included OC #2012082 New Suspension Beam Axle. Preliminary Vehicles #E-2482 & #E-2495 Production Vehicle #E-2505 (Front beam axle suspension) D140407SP3 I-SHIFT Transmission Vehicle #E-2525	-	Rob.	M.J.H.	M.J.H.
B	2015-01-23	Coach H3-45, New front pneumatic unit & New air lines color code OC #2013172. Production Vehicle #F-2923	P.1,2,3,4,5, 6, SP1 & SP3	Rob.	M.J.H.	M.J.H.
C	2015-06-19	Add a muffler on the heater water valve who replaces 6mm OD tube exhaust. OC #2015028. #D140407P6 Update Revision C	P.1	Rob.	M.J.H.	M.J.H.
D	2017-09-29	Come back with exhaust tube 6 mm OD natural white color, On the heater water valve, remove muffler. OC #2015092. Production vehicle H3-45 #J-0042.	P.6 P.1	Rob. Rob.	M.J.H. M.J.H.	M.J.H. M.J.H.
E	2018-03-30	Add new TCM Allison module and R.E.L.S. Reduce Engine Load at Stop OC #2018011, Production vehicle #K-0370	P.5	Rob.	M.J.H.	M.J.H.
F	2019-09-23	Add new Special Customer option : Independante left and right luggage air door lock.	SP5	Rob.	P.O. LAC.	P.O. LAC
G	2020-03-06	SPECIAL Brown Coach: Front quick connect fitting air hose for towing, service compartment.	SP6	Rob.	P.O.LAC.	P.O.LAC.
H	2021-03-18	SPECIAL EL EXPRESO LLC TORNADO : Parking Brake Overrule	SP7	Rob.	P.O.LAC	P.O.LAC
I	2022-01-17	Diagram update, (FRONT AIR MANIFOLD BLOCK)	P.1	RGOS	P.O.LAC	P.O.LAC
J	2022-02-24	SPECIAL BREWSTER WITH RUD CHAIN TRACTION SYSTEM Vehicles : #P-1315, 16, 17, 20, 21	SP4	Rob.	P.O.LAC	P.O.LAC





ACTIVE	COLOR	CIRCUIT
RED	RED	SECONDARY
GREEN	GREEN	PRIMARY & SUPPLY
BROWN	BROWN	PARKING BRAKE
BLUE	BLUE	STANDARD SUSPENSION
BLACK	BLACK	ACCESSORIES
YELLOW	YELLOW	COMPRESSOR UNLOAD

SAFETY SOLENOID VALVE FOR PARKING BRAKES APPLICATION.
USED ONLY WHEN THE WHEEL CHAIR LIFT
OPTION IS ASKED WITHOUT THE KNEELING OPTION.



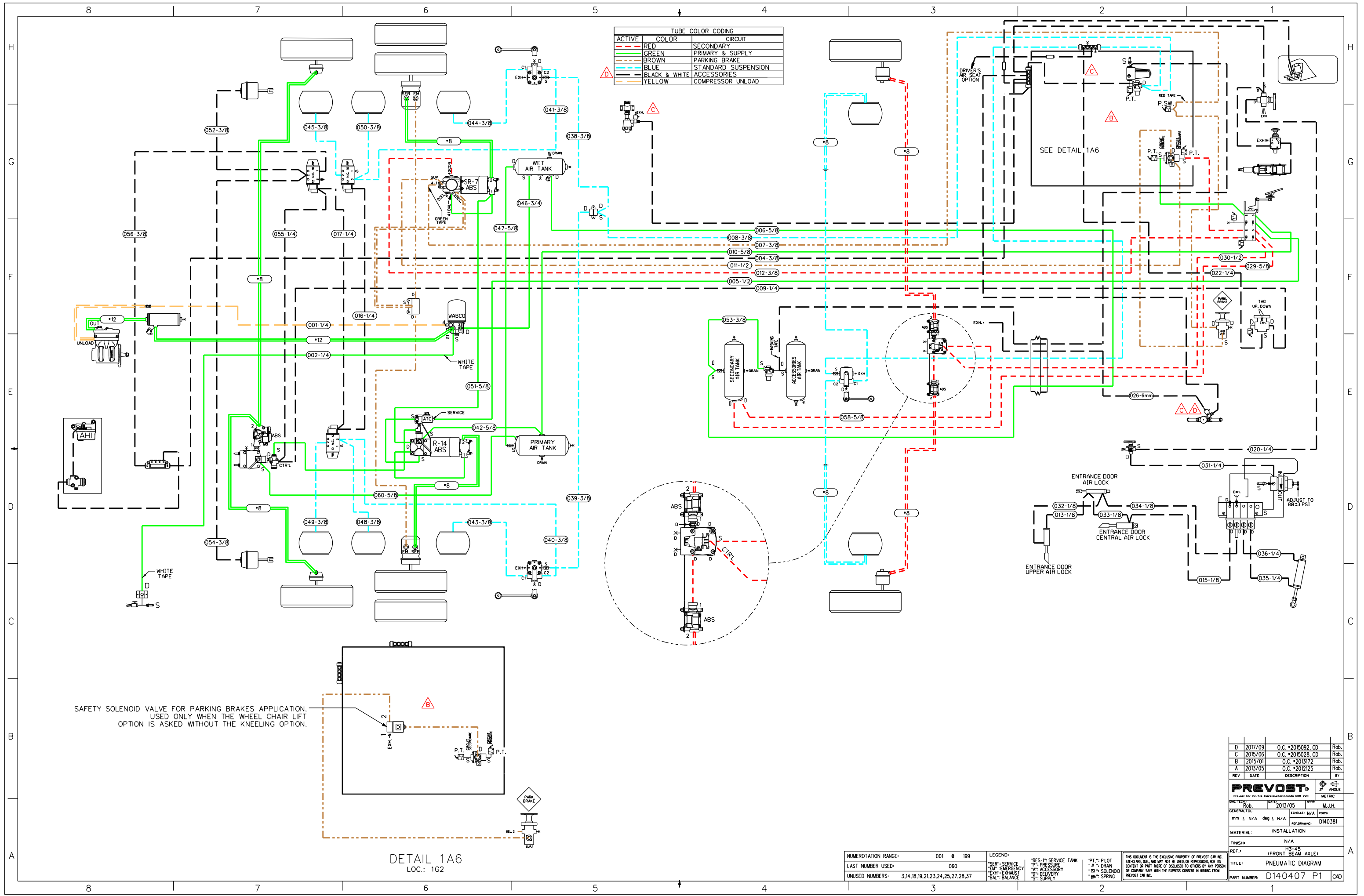
DETAIL 1A6
LOC.: 1G2

NUMEROTATION RANGE:	001 @ 199
LAST NUMBER USED:	060
UNUSED NUMBERS:	3,14,18,19,21,23,24,25,26,27,28,37

LEGEND:	*RES-T: SERVICE TANK	*PT.: PILOT
*SER: SERVICE	*P: PRESSURE	*A: DRAIN
*EM: EMERGENCY	*A: ACCESSORY	*S: SOLENOID
*EXH: EXHAUST	*D: DELIVERY	*SP: SPRING
*BAL: BALANCE	*S: SUPPLY	

THIS DOCUMENT IS THE EXCLUSIVE PROPERTY OF PREVOST CAR INC. IT IS LOANED TO YOU AND MAY NOT BE REPRODUCED, COPIED, OR TRANSMITTED IN ANY FORM OR BY ANY MEANS, ELECTRONIC OR MECHANICAL, INCLUDING PHOTOCOPYING, RECORDING, OR BY ANY INFORMATION STORAGE AND RETRIEVAL SYSTEM. WITHOUT THE EXPRESS WRITTEN CONSENT OF PREVOST CAR INC.

REV	DATE	DESCRIPTION	BY
C	2015/06	O.C. #2015028, CD	Rob.
B	2015/01	O.C. #2013172	Rob.
A	2013/05	O.C. #2012125	Rob.
<p>PREVOST</p> <p>Prevost Car Inc. 2500 Deschênes-Cormier Road 210</p> <p>DATE TESTED: Rob. 2013/05</p> <p>GENERAL TX: mm ± N/A deg ± N/A</p> <p>MATERIAL: INSTALLATION</p> <p>FINISH: N/A</p> <p>REF.: H3-4.5 (FRONT BEAM AXLE)</p> <p>TITLE: PNEUMATIC DIAGRAM</p> <p>PART NUMBER: D140407 P1</p>			



ACTIVE	COLOR	CIRCUIT
—	RED	SECONDARY
—	GREEN	PRIMARY & SUPPLY
—	BROWN	PARKING BRAKE
—	BLUE	STANDARD SUSPENSION
—	BLACK & WHITE	ACCESSORIES
—	YELLOW	COMPRESSOR UNLOAD

SAFETY SOLENOID VALVE FOR PARKING BRAKES APPLICATION. USED ONLY WHEN THE WHEEL CHAIR LIFT OPTION IS ASKED WITHOUT THE KNEELING OPTION.

DETAIL 1A6
LOC.: 1G2

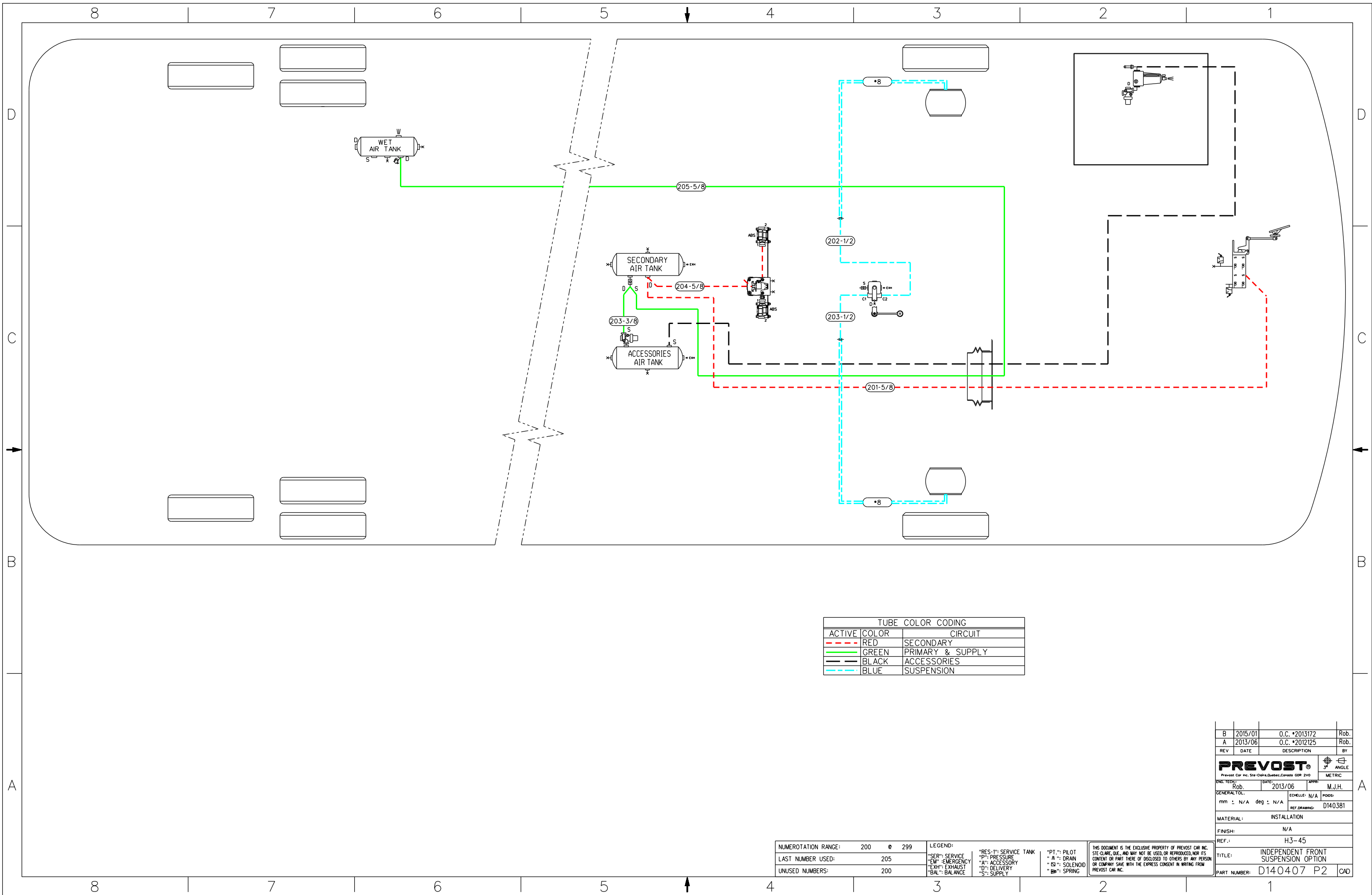
NUMEROTATION RANGE:	001 @ 199
LAST NUMBER USED:	060
UNUSED NUMBERS:	3,14,18,19,21,23,24,25,27,28,37

LEGEND:	RES-1: SERVICE TANK	P.T.: PILOT
SER-: SERVICE	P-: PRESSURE	-A-: DRAIN
EM-: EMERGENCY	AT-: ACCESSORY	-S3-: SOLENOID
EXH-: EXHAUST	D-: DELIVERY	-S-: SPRING
BAL-: BALANCE	S-: SUPPLY	

THIS DOCUMENT IS THE EXCLUSIVE PROPERTY OF PREVOST CAR INC. SEE CLAUSE ONE AND MAY NOT BE REPRODUCED OR DISCLOSED TO OTHERS BY ANY PERSON OR COMPANY WITHOUT THE EXPRESS CONSENT IN WRITING FROM PREVOST CAR INC.

REV	DATE	DESCRIPTION	BY
D	2017/09	O.C. #2015092, CD	Rob.
C	2015/06	O.C. #2015028, CD	Rob.
B	2015/01	O.C. #2013172	Rob.
A	2013/05	O.C. #2012125	Rob.

PREVOST		METRIC	
ENG. TECH:	DATE:	APP:	ANGLE:
Rob.	2013/05	M.J.H.	
GENERATOR:		ECHELLE: N/A	POSS:
mm ± N/A	deg ± N/A	REV. DRAWING: D140381	
MATERIAL: INSTALLATION			
FINISH: N/A			
REF.: 143-45 (FRONT BEAM AXLE)			
TITLE: PNEUMATIC DIAGRAM			
PART NUMBER: D140407 P1 CAD			

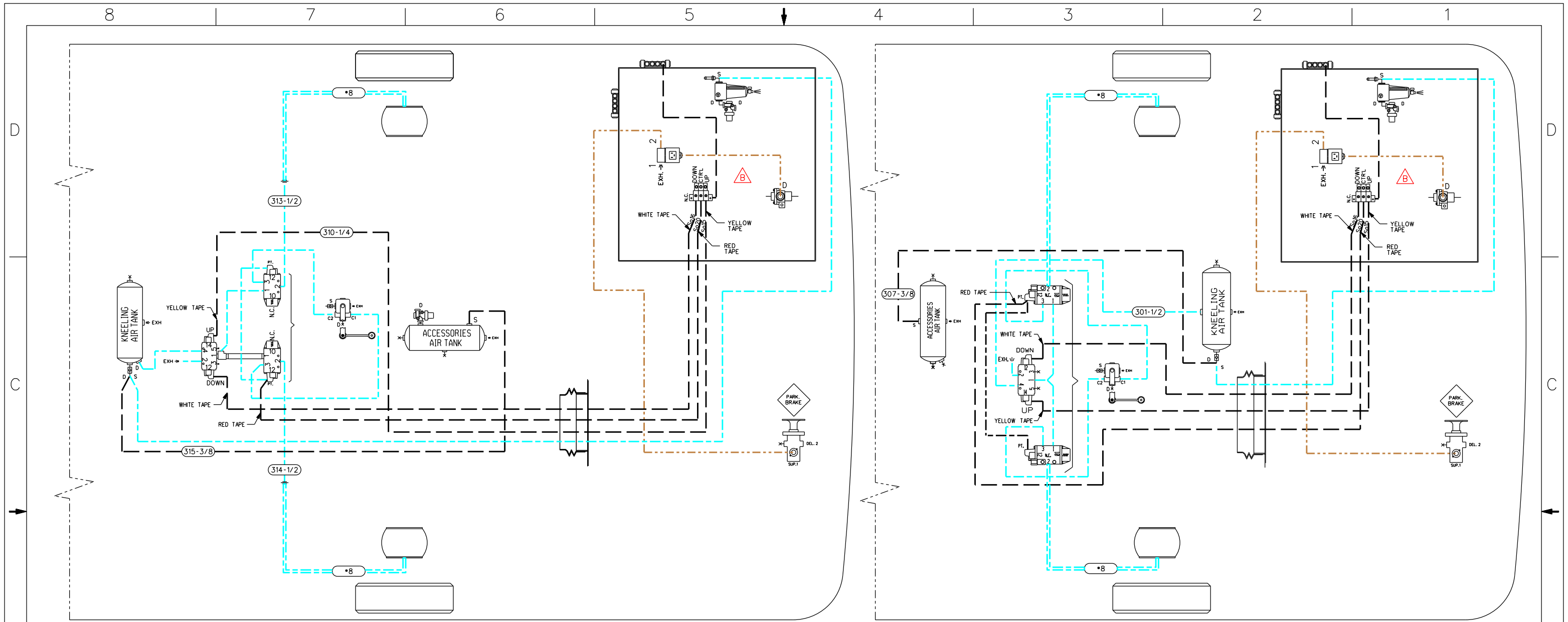


TUBE COLOR CODING	
ACTIVE COLOR	CIRCUIT
RED	SECONDARY
GREEN	PRIMARY & SUPPLY
BLACK	ACCESSORIES
BLUE	SUSPENSION

NUMEROTATION RANGE:	200 @ 299	LEGEND:	"RES-1": SERVICE TANK	"PT.": PILOT
LAST NUMBER USED:	205	"SER": SERVICE	"P": PRESSURE	"A": AIR
UNUSED NUMBERS:	200	"EM": EMERGENCY	"AK": ACCESSORY	"S": SOLENOID
		"EXH": EXHAUST	"D": DELIVERY	"SPR": SPRING
		"BAL": BALANCE	"S": SUPPLY	

THIS DOCUMENT IS THE EXCLUSIVE PROPERTY OF PREVOST CAR INC. SITE-CLIQUE, QUEBEC, CANADA. IT MAY NOT BE USED OR REPRODUCED FOR ANY OTHER CONTENT OR PART THEREOF DISCLOSED TO OTHERS BY ANY PERSON OR COMPANY WITHOUT THE EXPRESS CONSENT IN WRITING FROM PREVOST CAR INC.

REV	DATE	DESCRIPTION	BY
B	2015/01	O.C. #2013172	Rob.
A	2013/06	O.C. #2012125	Rob.
PREVOST			
<small>Prevost Car Inc. Site-Cluque, Quebec, Canada QOR 2V0</small>			
ENG. TECH:	DATE:	APPR:	METRIC
Rob.	2013/06	M.J.H.	3° ANGLE
GENERAL TOL:	ECHELLE:	N/A	PODS:
mm ± N/A deg ± N/A	REF. DRAWING:	D140381	
MATERIAL:	INSTALLATION		
FINISH:	N/A		
REF.:	H3-45		
TITLE:	INDEPENDENT FRONT SUSPENSION OPTION		
PART NUMBER:	D140407 P2 CAD		



WITH INDEPENDENT FRONT SUSPENSION OPTION

WITH FRONT BEAM AXLE OPTION

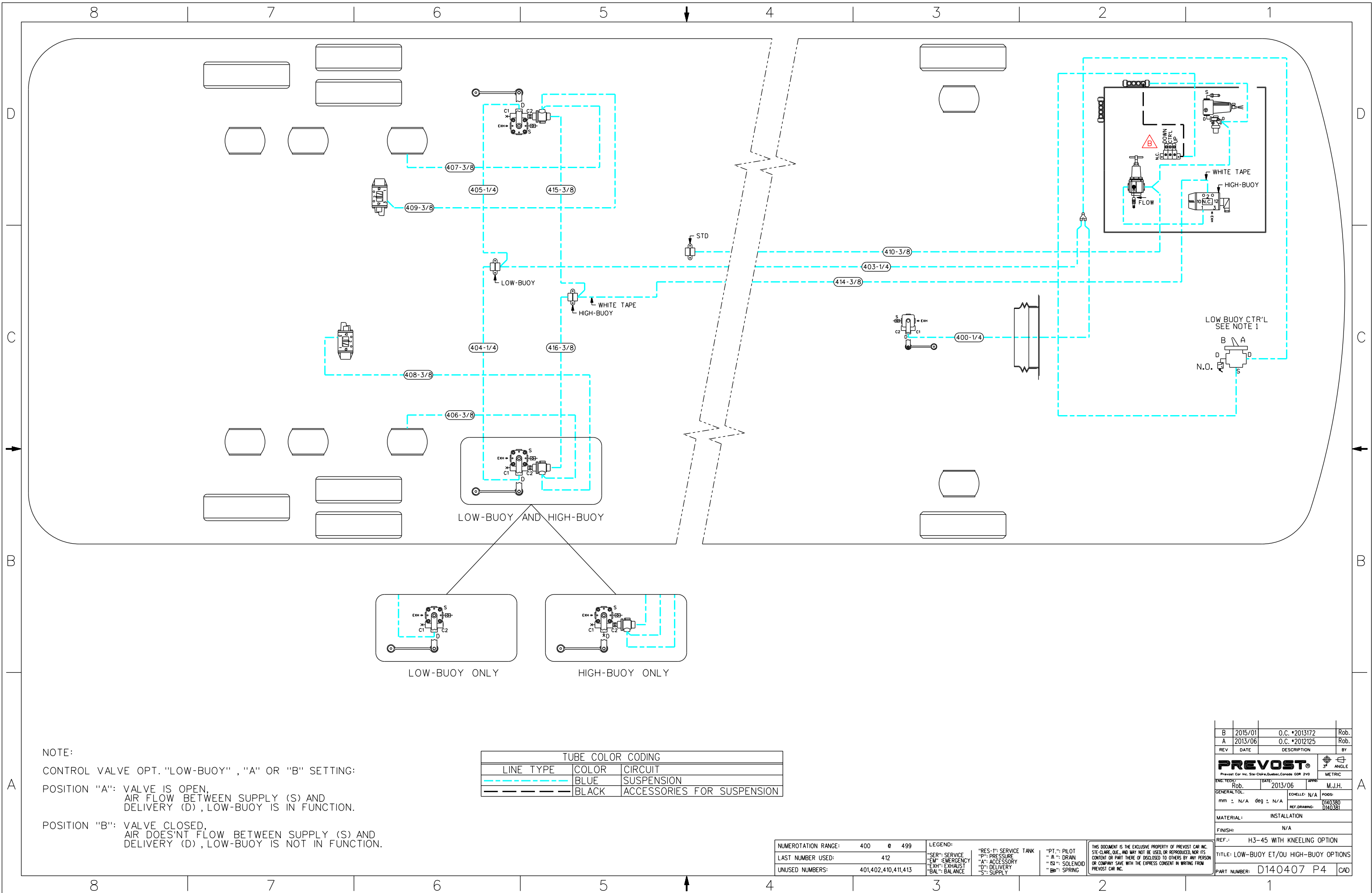
TUBE COLOR CODING		
LINE TYPE	COLOR	CIRCUIT
— (solid blue)	BLUE	SUSPENSION
- - - (dashed brown)	BROWN	PARKING BRAKES
— (solid black)	BLACK	ACCESSORIES FOR SUSPENSION

B	2015/01	O.C. #2013172	Rob.
A	2013/06	O.C. #2012125	Rob.
REV	DATE	DESCRIPTION	BY
PREVOST Prevost Car Inc. Ste-Claire, Quebec, Canada G9R 2V0			
ENCL. TECH:	DATE:	APPR:	3° ANGLE
Rob.	2013/06	M.J.H.	METRIC
GENERAL TOL:	ECHELLE: N/A	PODS:	
mm ± N/A deg ± N/A	REF. DRAWING: D140380	D140381	
MATERIAL:	INSTALLATION		
FINISH:	N/A		
REF.:	H3-45		
TITLE:	FRONT KNEELING OPTION		
PART NUMBER:	D140407 P3 CAD		

NUMEROTATION RANGE:	300 e 399
LAST NUMBER USED:	315
UNUSED NUMBERS:	302,303,304,306,307,308,309,310,311,312,316

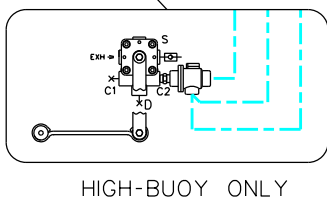
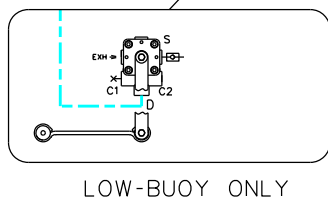
LEGEND:	"RES-": SERVICE TANK	"PT-": PILOT
"SER-": SERVICE	"P-": PRESSURE	"A-": DRAIN
"EM-": EMERGENCY	"AI-": ACCESSORY	"ES-": SOLENOID
"EXH-": EXHAUST	"D-": DELIVERY	"SP-": SPRING
"BAL-": BALANCE	"S-": SUPPLY	

THIS DOCUMENT IS THE EXCLUSIVE PROPERTY OF PREVOST CAR INC. STE-CLAIRE, QUE., AND MAY NOT BE USED, OR REPRODUCED, NOR ITS CONTENT OR PART THERE OF DISCLOSED TO OTHERS BY ANY PERSON OR COMPANY SAKE WITH THE EXPRESS CONSENT IN WRITING FROM PREVOST CAR INC.



NOTE:
 CONTROL VALVE OPT. "LOW-BUOY", "A" OR "B" SETTING:
 POSITION "A": VALVE IS OPEN,
 AIR FLOW BETWEEN SUPPLY (S) AND
 DELIVERY (D), LOW-BUOY IS IN FUNCTION.
 POSITION "B": VALVE CLOSED,
 AIR DOES'NT FLOW BETWEEN SUPPLY (S) AND
 DELIVERY (D), LOW-BUOY IS NOT IN FUNCTION.

TUBE COLOR CODING		
LINE TYPE	COLOR	CIRCUIT
	BLUE	SUSPENSION
	BLACK	ACCESSORIES FOR SUSPENSION

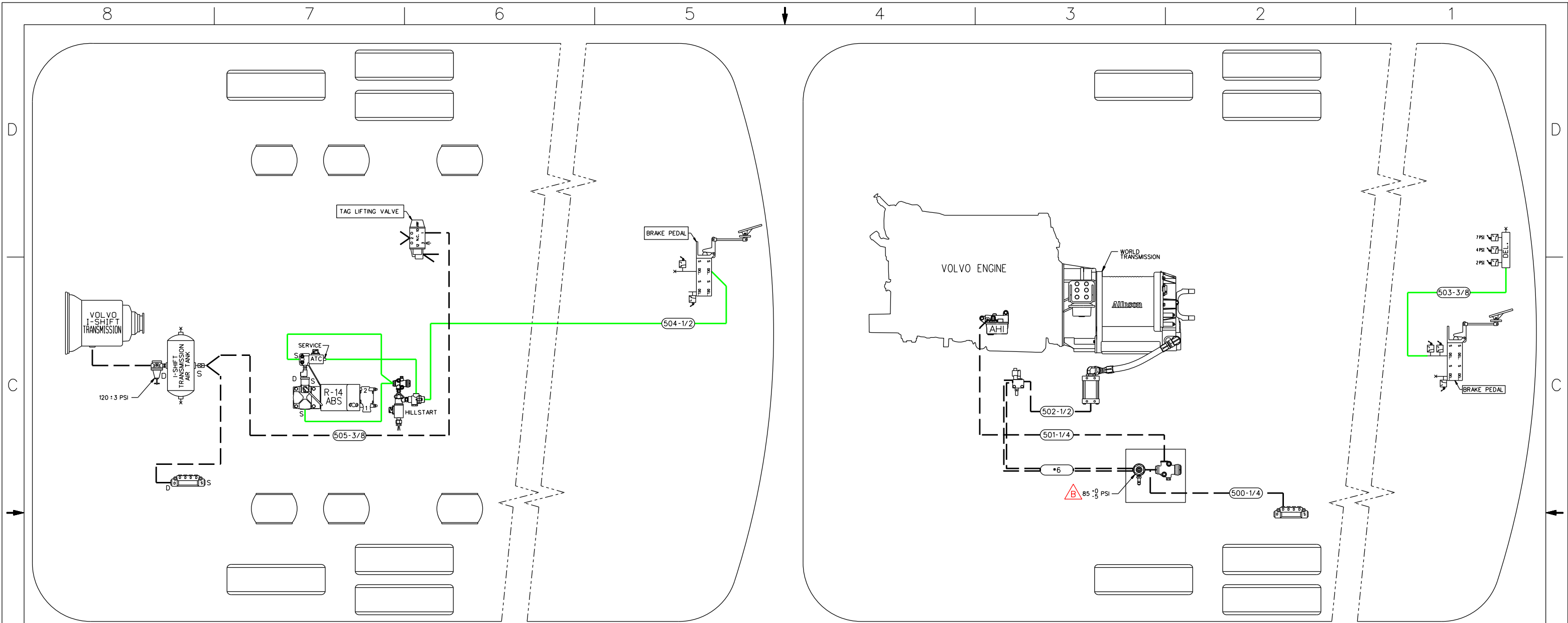


NUMEROTATION RANGE:	400 0 499
LAST NUMBER USED:	412
UNUSED NUMBERS:	401,402,410,411,413

LEGEND:	"RES-1": SERVICE TANK	"PT-1": PILOT
"SER": SERVICE	"P": PRESSURE	"A": DRAIN
"EM": EMERGENCY	"A": ACCESSORY	"S": SOLENOID
"EXH": EXHAUST	"D": DELIVERY	"SP": SPRING
"BAL": BALANCE	"S": SUPPLY	

THIS DOCUMENT IS THE EXCLUSIVE PROPERTY OF PREVOST CAR INC.
 STE-CLAUDE, QUE. AND MAY NOT BE USED OR REPRODUCED FOR ITS
 CONTENT OR PART THERE OF DISCLOSED TO OTHERS BY ANY PERSON
 OR COMPANY SAVE WITH THE EXPRESS CONSENT IN WRITING FROM
 PREVOST CAR INC.

REV	DATE	DESCRIPTION	BY
B	2015/01	O.C. *2013172	Rob.
A	2013/06	O.C. *2012125	Rob.
PREVOST			
<small>Prevost Car Inc. Ste-Claude, Quebec, Canada GOR 2V0</small>			
ENG. TECH:	DATE:	APPR:	
Rob.	2013/06	M.J.H.	
GENERAL TOL.	ECHELLE:	PROJ:	
mm ± N/A deg ± N/A	N/A	D140380	
	REF. DRAWING:	D140381	
MATERIAL:	INSTALLATION		
FINISH:	N/A		
REF.:	H3-45 WITH KNEELING OPTION		
TITLE:	LOW-BUOY ET/OU HIGH-BUOY OPTIONS		
PART NUMBER:	D140407 P4	CD	



I-SHIFT TRANSMISSION OPTION

ALLISON TRANSMISSION WITH RETARDER OPTION

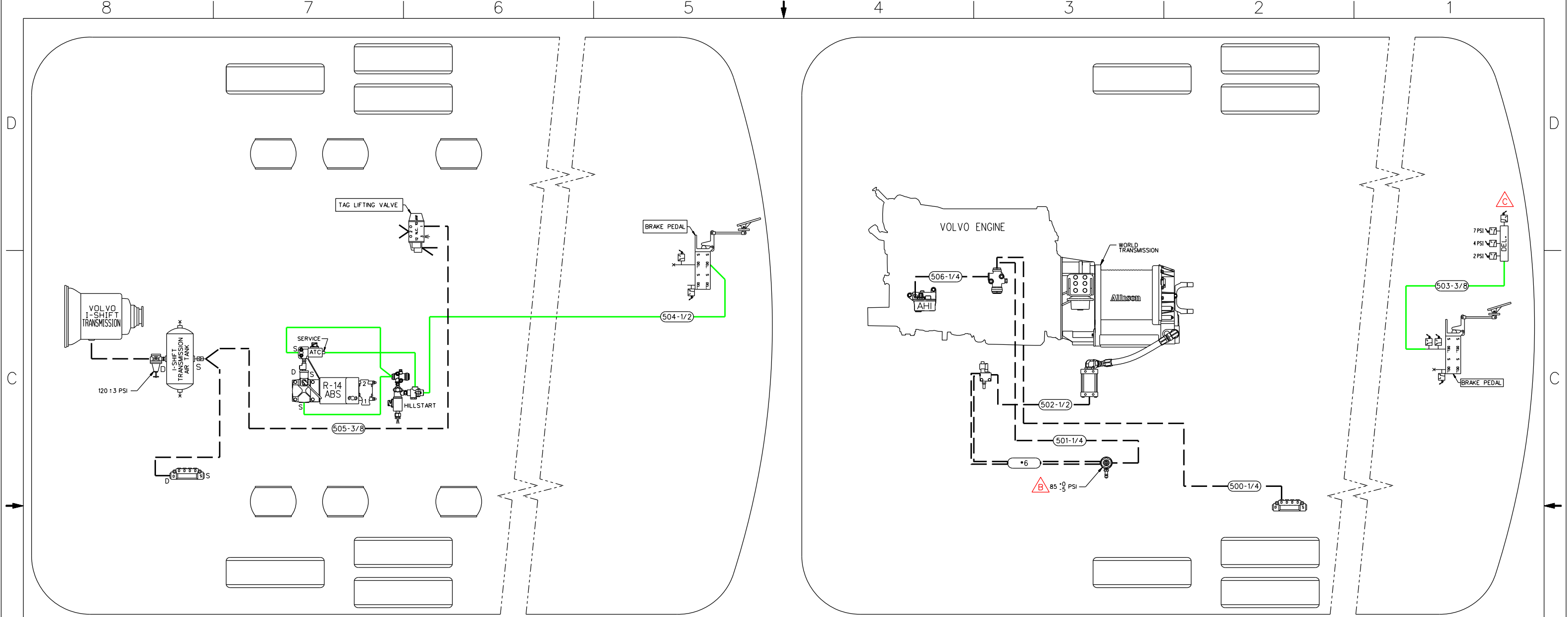
TUBE COLOR CODING		
ACTIVE	COLOR	CIRCUIT
—	GREEN	PRIMARY & SUPPLY
—	BLACK	ACCESSORIES

NUMEROTATION RANGE:	500 @ 599
LAST NUMBER USED:	505
UNUSED NUMBERS:	-

LEGEND:	
"SER": SERVICE	"RES-1": SERVICE TANK
"EM": EMERGENCY	"P": PRESSURE
"EXH": EXHAUST	"A": ACCESSORY
"BAL": BALANCE	"D": DELIVERY
	"S": SUPPLY
	"PT.": PILOT
	"A.": DRAIN
	"S1": SOLENOID
	"SP": SPRING

THIS DOCUMENT IS THE EXCLUSIVE PROPERTY OF PREVOST CAR INC. SITE-CARE, QIE, AND MAY NOT BE USED, OR REPRODUCED, NOR ITS CONTENT OR PART THERE OF DISCLOSED TO OTHERS BY ANY PERSON OR COMPANY SAVE WITH THE EXPRESS CONSENT IN WRITING FROM PREVOST CAR INC.

B	2015/02	TOLERANCES ADDED	Rob.
A	2013/06	O.C. *2012125	Rob.
REV	DATE	DESCRIPTION	BY
PREVOST			
<small>Prevost Car Inc. Ste-Clotilde, Quebec, Canada G0R 2V0</small>			
ENG. TECH:	Rob.	DATE:	2013/06
APPR:	M.J.H.	SCALE:	N/A
GENERAL TOL:	mm ± N/A	deg ± N/A	POST:
REF. DRAWING:	D140380	D140381	
MATERIAL:	INSTALLATION		
FINISH:	N/A		
REF.:	H3-45		
TITLE:	OPTIONS I-SHIFT OR ALLISON WITH RETARDER TRANSMISSION		
PART NUMBER:	D140407	P5	CAD



I-SHIFT TRANSMISSION OPTION

ALLISON TRANSMISSION WITH RETARDER OPTION

TUBE COLOR CODING		
ACTIVE	COLOR	CIRCUIT
—	GREEN	PRIMARY & SUPPLY
—	BLACK	ACCESSORIES

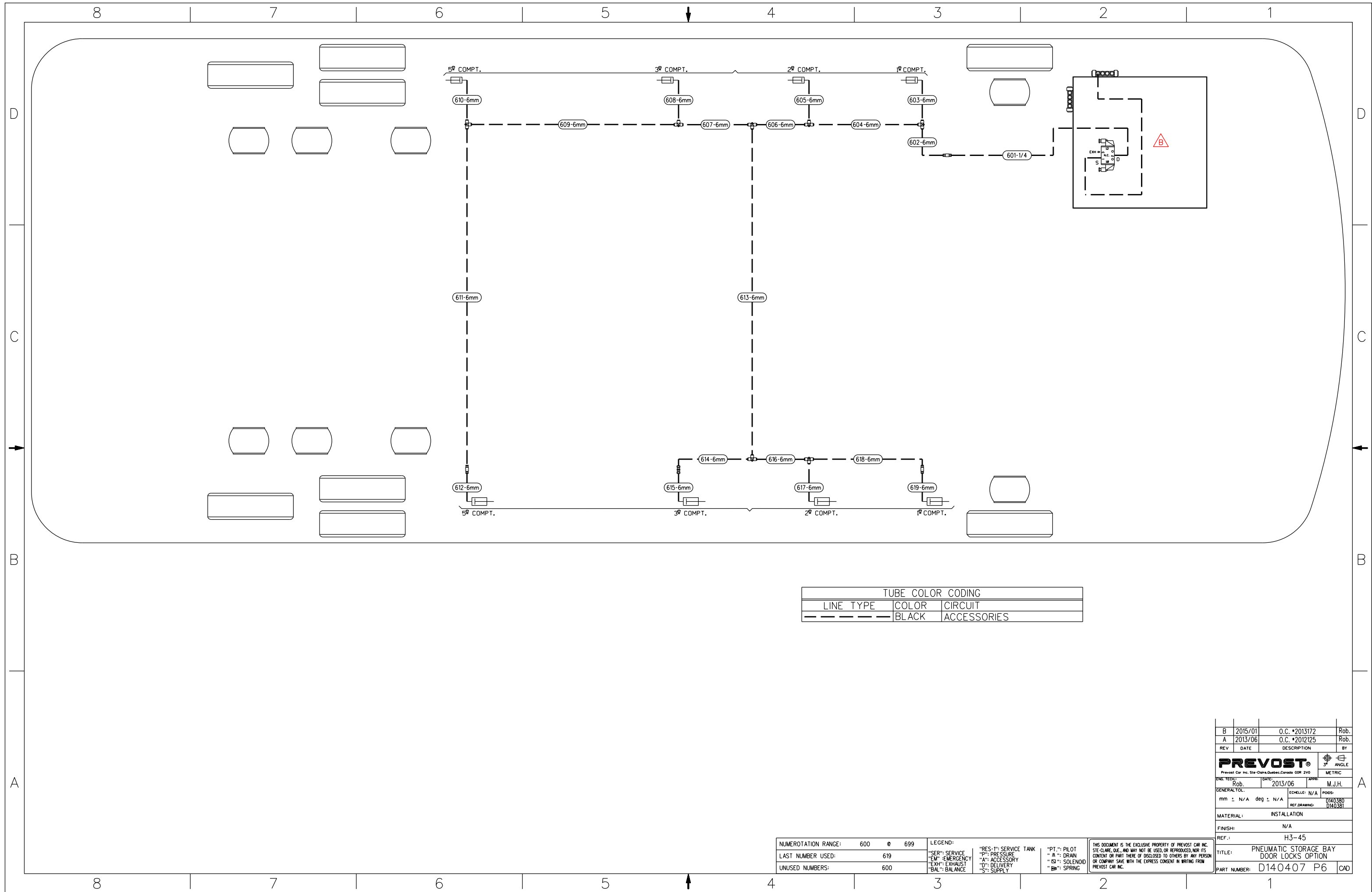
REV	DATE	DESCRIPTION	BY
C	2018/03	OC *2018011_CD	Rob.
B	2015/02	TOLERANCES ADDED	Rob.
A	2013/06	O.C. *2012125	Rob.

PREVOST		3° ANGLE	
Prevost Car Inc. Ste-Clotilde, Quebec, Canada G0R 2V0			
ENG. TECH:	DATE:	APPR:	
Rob.	2013/06	M.J.H.	
GENERAL TOL:	ECHELLE: N/A	PODS:	
mm ± N/A	deg ± N/A	D140380	
MATERIAL:	INSTALLATION	REF. DRAWING:	D140381
FINISH:	N/A		
REF.:	H3-45		
TITLE: OPTIONS I-SHIFT OR ALLISON WITH RETARDER TRANSMISSION			
PART NUMBER: D140407 P5 CAD			

NUMEROTATION RANGE:	500 @ 599
LAST NUMBER USED:	506
UNUSED NUMBERS:	.

LEGEND:	"RES-1": SERVICE TANK	"PT-1": PILOT
"SER-1": SERVICE	"P-1": PRESSURE	"D-1": DRAIN
"EM-1": EMERGENCY	"A-1": ACCESSORY	"S-1": SOLENOID
"EXH-1": EXHAUST	"D-1": DELIVERY	"SP-1": SPRING
"BAL-1": BALANCE	"S-1": SUPPLY	

THIS DOCUMENT IS THE EXCLUSIVE PROPERTY OF PREVOST CAR INC. STE-CLAUDE, QUE., AND MAY NOT BE USED, OR REPRODUCED, NOR ITS CONTENT OR PART THERE OF DISCLOSED TO OTHERS BY ANY PERSON OR COMPANY SAVE WITH THE EXPRESS CONSENT IN WRITING FROM PREVOST CAR INC.



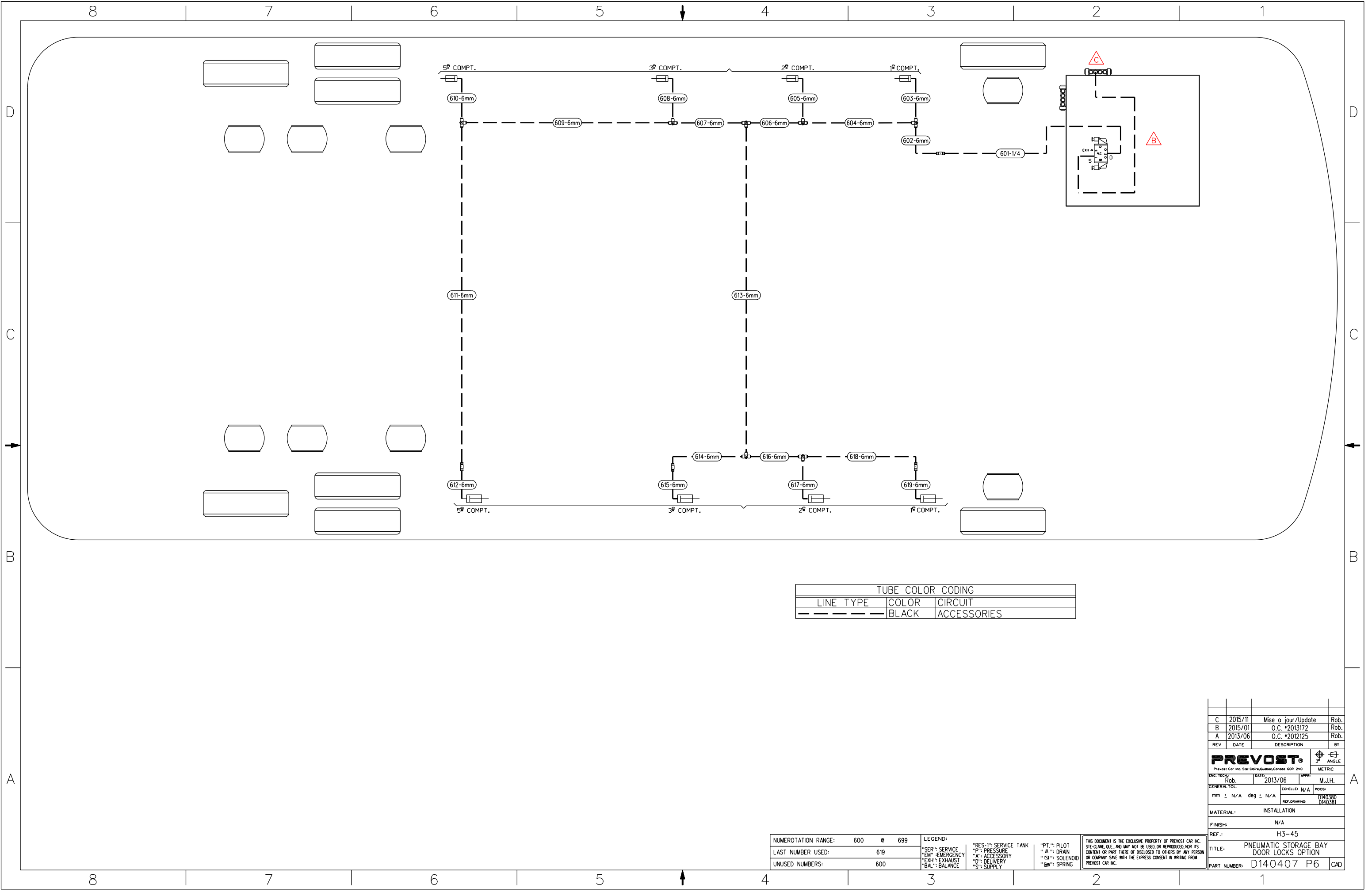
TUBE COLOR CODING		
LINE TYPE	COLOR	CIRCUIT
---	BLACK	ACCESSORIES

NUMEROTATION RANGE:	600 @ 699
LAST NUMBER USED:	619
UNUSED NUMBERS:	600

LEGEND:	"RES"-: SERVICE TANK	"PT.-": PILOT
"SER"-: SERVICE	"P"-: PRESSURE	"A"-: DRAIN
"EM"-: EMERGENCY	"A"-: ACCESSORY	"S"-: SOLENOID
"EXH"-: EXHAUST	"D"-: DELIVERY	"SPR"-: SPRING
"BAL"-: BALANCE	"S"-: SUPPLY	

THIS DOCUMENT IS THE EXCLUSIVE PROPERTY OF PREVOST CAR INC. SITE-CLARE, QUE., AND MAY NOT BE USED, OR REPRODUCED, NOR ITS CONTENT OR PART THERE OF DISCLOSED TO OTHERS BY ANY PERSON OR COMPANY SAVE WITH THE EXPRESS CONSENT IN WRITING FROM PREVOST CAR INC.

REV	DATE	DESCRIPTION	BY										
B	2015/01	O.C. *2013172	Rob.										
A	2013/06	O.C. *2012125	Rob.										
<table border="1"> <tr> <td>PREVOST®</td> <td>METRIC</td> </tr> <tr> <td>Rob.</td> <td>M.J.H.</td> </tr> <tr> <td>DATE: 2013/06</td> <td>APPR: M.J.H.</td> </tr> <tr> <td>GENERAL TOL: mm ± N/A deg ± N/A</td> <td>ECHELLE: N/A</td> </tr> <tr> <td>REF. DRAWING: D140380 D140381</td> <td>PODS: D140380 D140381</td> </tr> </table>				PREVOST®	METRIC	Rob.	M.J.H.	DATE: 2013/06	APPR: M.J.H.	GENERAL TOL: mm ± N/A deg ± N/A	ECHELLE: N/A	REF. DRAWING: D140380 D140381	PODS: D140380 D140381
PREVOST®	METRIC												
Rob.	M.J.H.												
DATE: 2013/06	APPR: M.J.H.												
GENERAL TOL: mm ± N/A deg ± N/A	ECHELLE: N/A												
REF. DRAWING: D140380 D140381	PODS: D140380 D140381												
MATERIAL: INSTALLATION													
FINISH: N/A													
REF.: H3-45													
TITLE: PNEUMATIC STORAGE BAY DOOR LOCKS OPTION													
PART NUMBER: D140407 P6 CAD													



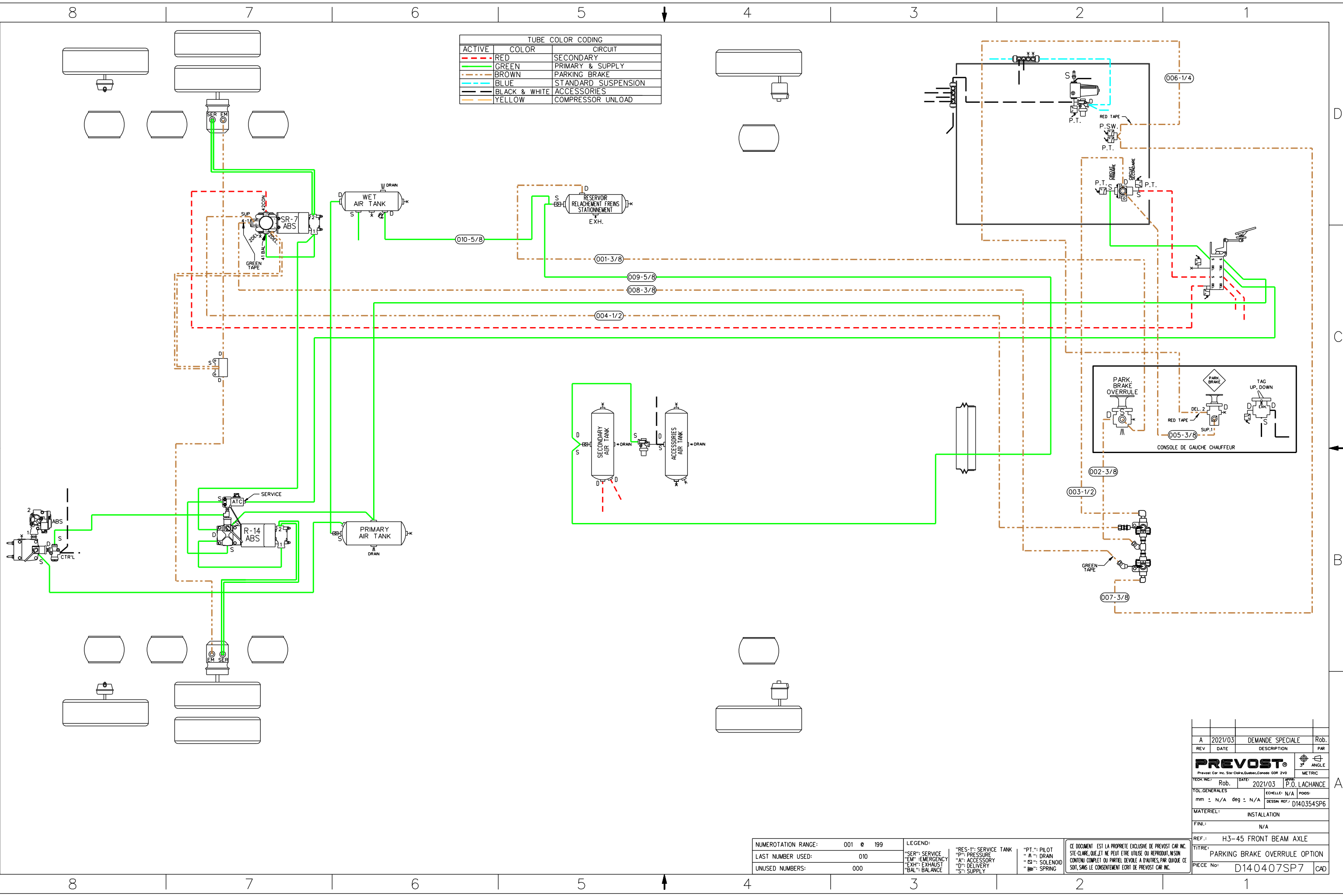
TUBE COLOR CODING		
LINE TYPE	COLOR	CIRCUIT
---	BLACK	ACCESSORIES

NUMEROTATION RANGE:	600 @ 699	LEGEND:	"RES-1": SERVICE TANK	"PT.": PILOT
LAST NUMBER USED:	619	"SER": SERVICE	"P": PRESSURE	"A": DRAIN
UNUSED NUMBERS:	600	"EM": EMERGENCY	"A": ACCESSORY	"S": SOLENOID
		"EXH": EXHAUST	"D": DELIVERY	"SP": SPRING
		"BAL": BALANCE	"S": SUPPLY	

THIS DOCUMENT IS THE EXCLUSIVE PROPERTY OF PREVOST CAR INC. STE-CLAUDE, QUE. AND MAY NOT BE USED, OR REPRODUCED, NOR ITS CONTENT OR PART THERE OF DISCLOSED TO OTHERS BY ANY PERSON OR COMPANY SAVE WITH THE EXPRESS CONSENT IN WRITING FROM PREVOST CAR INC.

REV	DATE	DESCRIPTION	BY
C	2015/11	Mise à jour/Update	Rob.
B	2015/01	O.C. #2013172	Rob.
A	2013/06	O.C. #2012125	Rob.
PREVOST <small>Prevost Car Inc. Ste-Claude, Québec, Canada G0R 2V0</small>			
DATE:	2013/06	APPROV:	M.J.H.
GENERAL TOL.	mm ± N/A deg ± N/A	ECHÉLLE:	N/A
MATERIAL:	INSTALLATION		
FINISH:	N/A		
REF.:	H3-45		
TITLE:	PNEUMATIC STORAGE BAY DOOR LOCKS OPTION		
PART NUMBER:	D140407 P6	CAD	

ACTIVE	COLOR	CIRCUIT
- - -	RED	SECONDARY
—	GREEN	PRIMARY & SUPPLY
- - -	BROWN	PARKING BRAKE
- - -	BLUE	STANDARD SUSPENSION
- - -	BLACK & WHITE	ACCESSORIES
- - -	YELLOW	COMPRESSOR UNLOAD

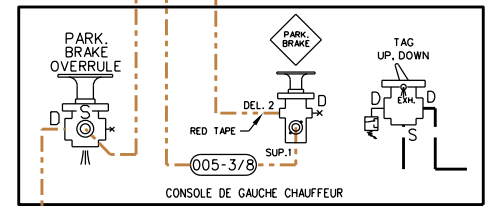
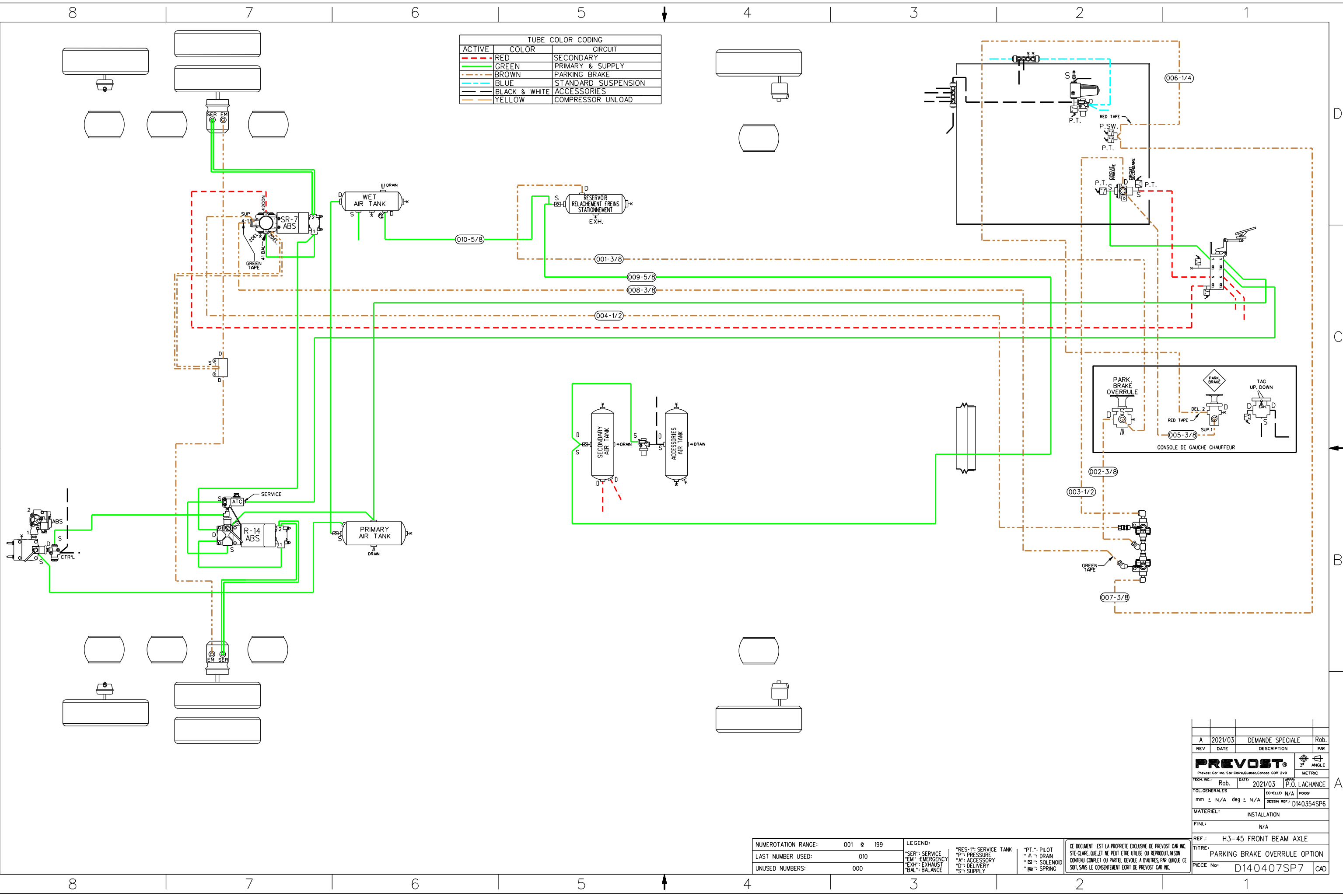


REV	DATE	DESCRIPTION	PAR
A	2021/03	DEMANDE SPECIALE	Rob.
PREVOST			
<small>Prevost Car Inc. Ste-Clair, Quebec, Canada QOR 2V0</small>			
TECH.:	Rob.	DATE:	2021/03
TOL. GENERALES		ECHELLE:	N/A
mm ± N/A deg ± N/A		POISS:	
MATERIEL:		INSTALLATION	
FINI:		N/A	
REF.:		H3-45 FRONT BEAM AXLE	
TITRE:		PARKING BRAKE OVERRULE OPTION	
PIECE No.:		D140407SP7	CAD

NUMEROTATION RANGE:	001 @ 199	LEGEND:	"RES-1": SERVICE TANK	"PT-1": PILOT
LAST NUMBER USED:	010	"SER": SERVICE	"P": PRESSURE	"A": DRAIN
UNUSED NUMBERS:	000	"EM": EMERGENCY	"A": ACCESSORY	"S": SOLENOID
		"EXH": EXHAUST	"D": DELIVERY	"S": SPRING
		"BAL": BALANCE	"S": SUPPLY	

CE DOCUMENT EST LA PROPRIETE EXCLUSIVE DE PREVOST CAR INC. SIE-CLARE, QUE ET NE PEUT ETRE UTILISE OU REPRODUIT, NI SON CONTENU COMPLET OU PARTIEL DEVOLU A D'AUTRES, PAR QUOIQUE CE SOIT, SANS LE CONSENTEMENT ECRIT DE PREVOST CAR INC.

ACTIVE	COLOR	CIRCUIT
- - -	RED	SECONDARY
—	GREEN	PRIMARY & SUPPLY
- - -	BROWN	PARKING BRAKE
- - -	BLUE	STANDARD SUSPENSION
- - -	BLACK & WHITE	ACCESSORIES
- - -	YELLOW	COMPRESSOR UNLOAD

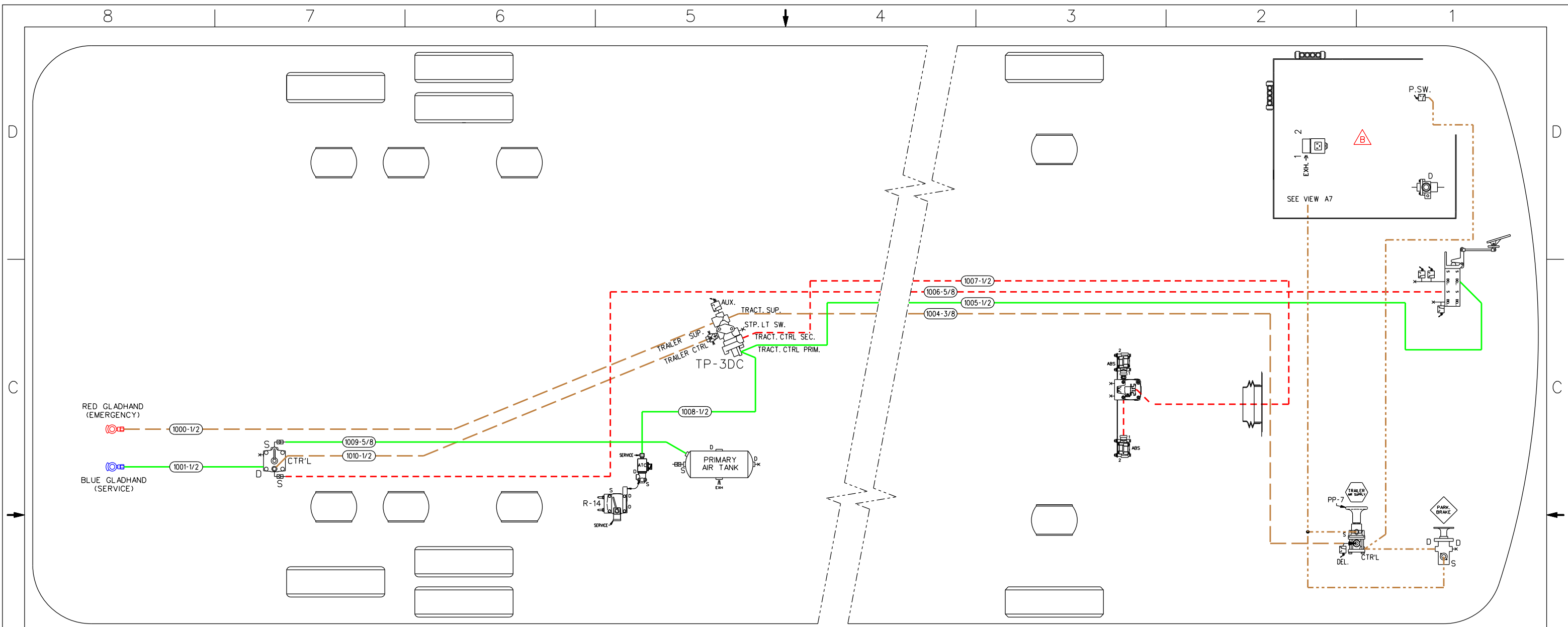


NUMEROTATION RANGE:	001 @ 199
LAST NUMBER USED:	010
UNUSED NUMBERS:	000

LEGEND:	"RES-1": SERVICE TANK	"PT-1": PILOT
"SER": SERVICE	"P": PRESSURE	"A": DRAIN
"EM": EMERGENCY	"A": ACCESSORY	"S": SOLENOID
"EXH": EXHAUST	"D": DELIVERY	"SP": SPRING
"BAL": BALANCE	"S": SUPPLY	

CE DOCUMENT EST LA PROPRIETE EXCLUSIVE DE PREVOST CAR INC. SIE-CLARE, QUE ET NE PEUT ETRE UTILISE OU REPRODUIT, NI SON CONTENU COMPLET OU PARTIEL DEVOLE A D'AUTRES, PAR QUOIQUE CE SOIT, SANS LE CONSENTEMENT ECRIT DE PREVOST CAR INC.

REV	DATE	DEMANDE SPECIALE	Rob.
			PAR
PREVOST			
<small>Prevost Car Inc. Ste-Clare, Quebec, Canada GOR 2V0</small>			
TECH.:	Rob.	DATE:	2021/03
TOL. GENERALES		ECHELLE:	N/A
mm ±	N/A	deg ±	N/A
MATERIEL: INSTALLATION			
FINI: N/A			
REF.: H3-45 FRONT BEAM AXLE			
TITRE: PARKING BRAKE OVERRULE OPTION			
PIECE No: D140407SP7			



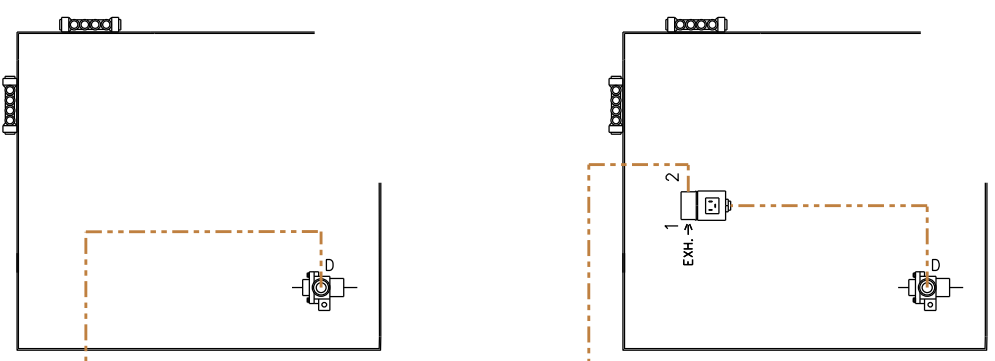
RED GLADHAND
(EMERGENCY)

BLUE GLADHAND
(SERVICE)

TP-3DC

TRACT. SUP.
TRAILER SUP.
STP. LT. SW.
TRACT. CTRL. SEC.
TRACT. CTRL. PRIM.

PRIMARY AIR TANK



WITHOUT KNEELING
OPTION

WITH KNEELING OPTION
OR
WITHOUT KNEELING WITH WCL OPTION

VIEW A7

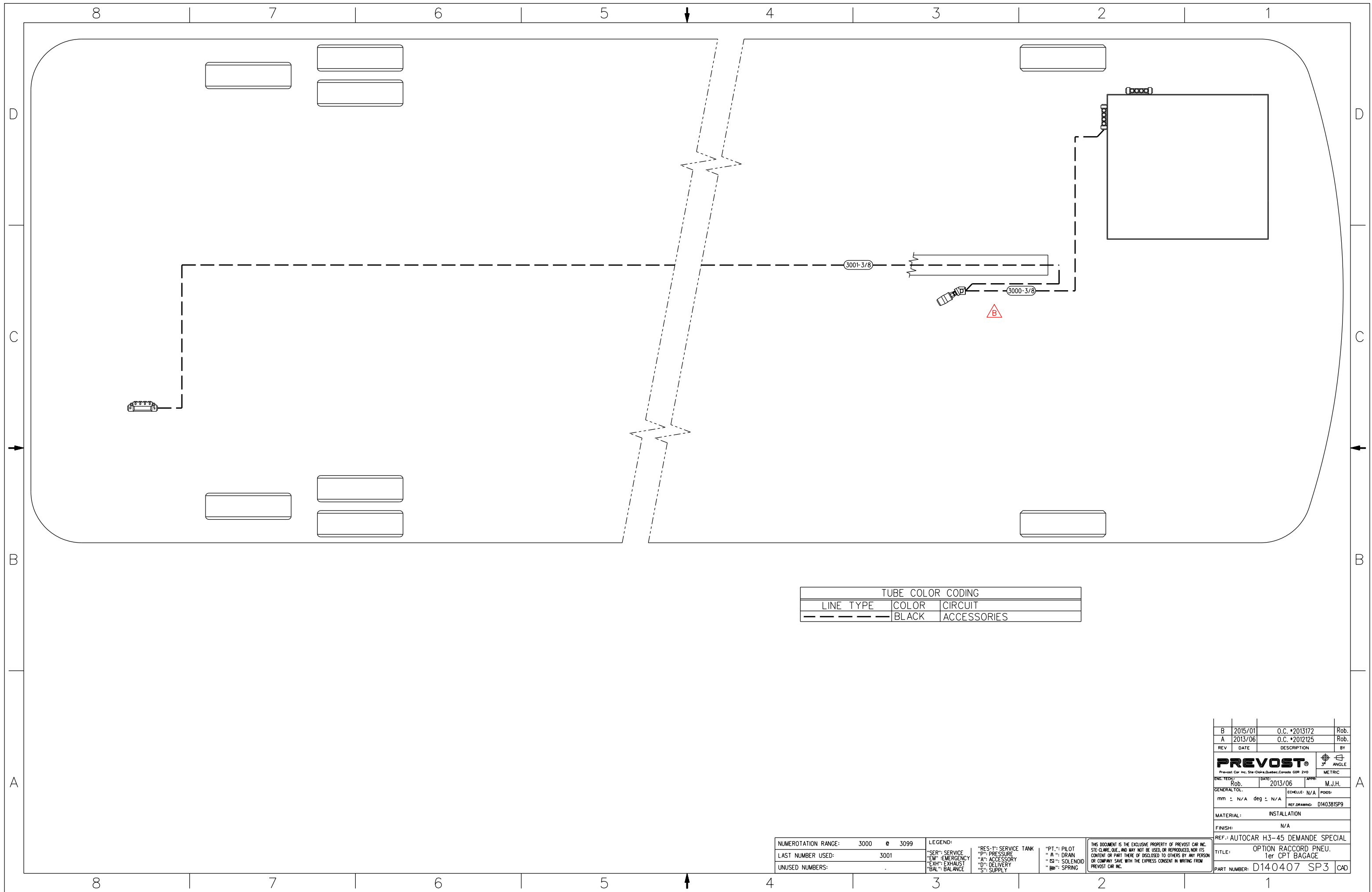
TUBE COLOR CODING	
ACTIVE COLOR	CIRCUIT
RED	SECONDARY
GREEN	PRIMARY & SUPPLY
YELLOW	PARKING BRAKE
BROWN	TRAILER

NUMEROTATION RANGE:	1000 @ 1099
LAST NUMBER USED:	1010
UNUSED NUMBERS:	1002, 1003

LEGEND:	"RES-1": SERVICE TANK	"PT.": PILOT
"SER": SERVICE	"P": PRESSURE	"A": DRAIN
"EM": EMERGENCY	"A": ACCESSORY	"S": SOLENOID
"EXH": EXHAUST	"D": DELIVERY	"SP": SPRING
"BAL": BALANCE	"S": SUPPLY	

THIS DOCUMENT IS THE EXCLUSIVE PROPERTY OF PREVOST CAR INC. SITE-CLARE, QUE., AND MAY NOT BE USED, OR REPRODUCED, NOR ITS CONTENT OR PART THERE OF DISCLOSED TO OTHERS BY ANY PERSON OR COMPANY, SAVE WITH THE EXPRESS CONSENT IN WRITING FROM PREVOST CAR INC.

REV	DATE	DESCRIPTION	BY
B	2015/01	O.C. #2013172	Rob.
A	2013/09	O.C. #2012125	Rob.
<p>PREVOST</p> <p>Prevost Car Inc. Ste-Clair, Quebec, Canada Q9R 2V0</p> <p>DATE: 2013/06 APPR: M.J.H.</p> <p>GENERAL TOL. mm ± N/A deg ± N/A</p> <p>ECHELLE: N/A</p> <p>PODS: D140380</p> <p>REF. DRAWING: D140381</p> <p>MATERIAL: INSTALLATION</p> <p>FINISH: N/A</p> <p>REF.: H3-45</p> <p>TITLE: OPTIONS TRAILER HITCH AIR BRAKES</p> <p>PART NUMBER: D140407 SP1 CAD</p>			

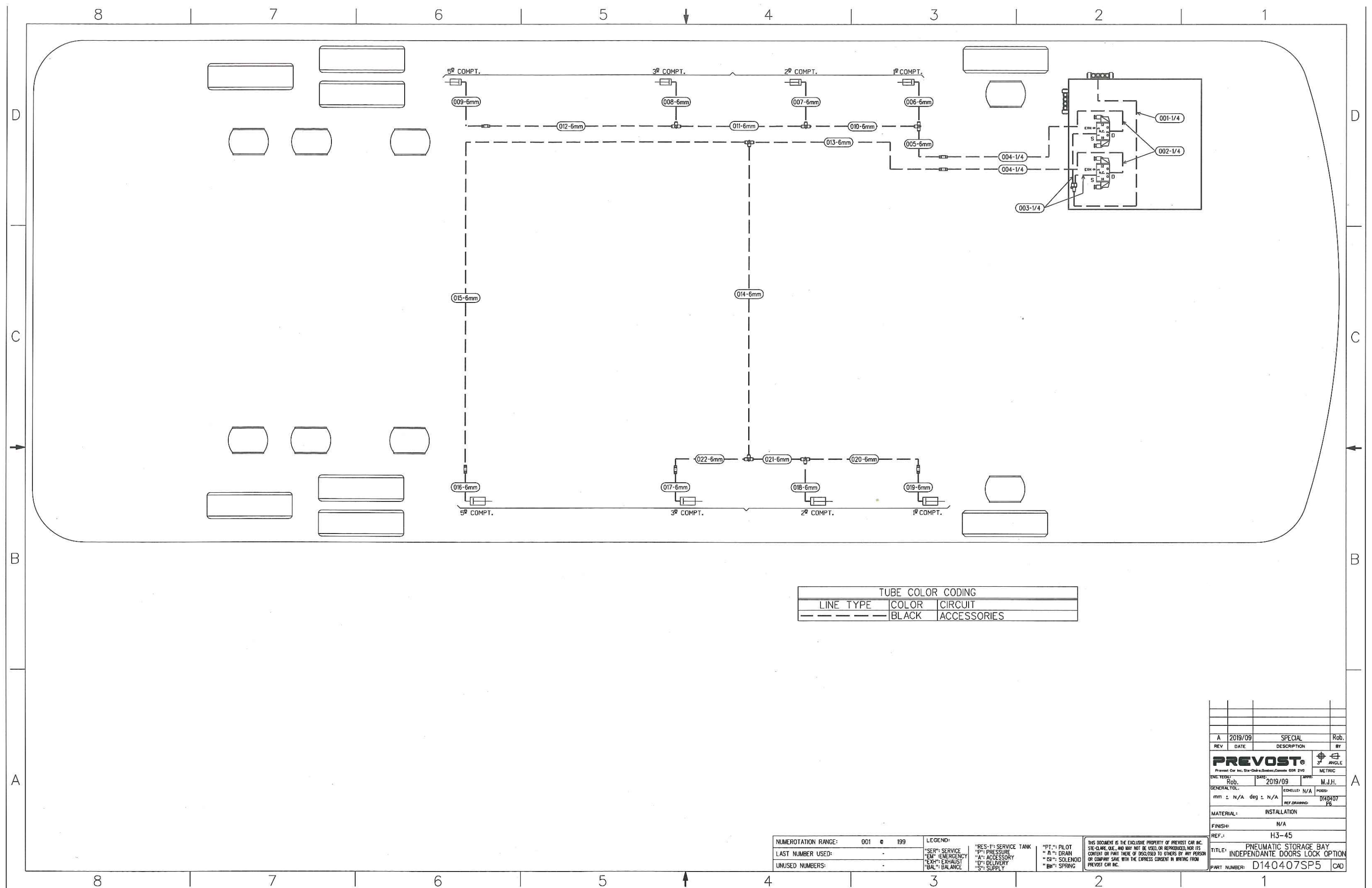


TUBE COLOR CODING		
LINE TYPE	COLOR	CIRCUIT
---	BLACK	ACCESSORIES

NUMEROTATION RANGE:	3000 @ 3099	LEGEND:	"RES-1": SERVICE TANK	"PT.": PILOT	THIS DOCUMENT IS THE EXCLUSIVE PROPERTY OF PREVOST CAR INC. STE-CLAUDE, QUE., AND MAY NOT BE USED, OR REPRODUCED, NOR ITS CONTENT OR PART THEREOF, DISCLOSED TO OTHERS BY ANY PERSON OR COMPANY, SAVE WITH THE EXPRESS CONSENT IN WRITING FROM PREVOST CAR INC.
LAST NUMBER USED:	3001	"SER": SERVICE	"P": PRESSURE	"M": DRAIN	
UNUSED NUMBERS:	.	"EM": EMERGENCY	"A": ACCESSORY	"ES": SOLENOID	

"EXH": EXHAUST
 "ID": DELIVERY
 "SI": SUPPLY
 "BAL": BALANCE
 "SP": SPRING

REV	DATE	DESCRIPTION	BY
B	2015/01	O.C. #2013172	Rob.
A	2013/06	O.C. #2012125	Rob.
PREVOST <small>Prevost Car Inc. Ste-Clair, Québec, Canada G0R 2V0</small>			
ENG. TECH:	DATE:	APPR:	ANGLE:
Rob.	2013/06	M.J.H.	METRIC
GENERAL TOL:	mm ± N/A	deg ± N/A	PODS:
REF. DRAWING: D140381SP9			
MATERIAL: INSTALLATION			
FINISH: N/A			
REF.: AUTOCAR H3-45 DEMANDE SPECIAL			
TITLE: OPTION RACCORD PNEU. 1er CPT BAGAGE			
PART NUMBER: D140407 SP3 CAD			

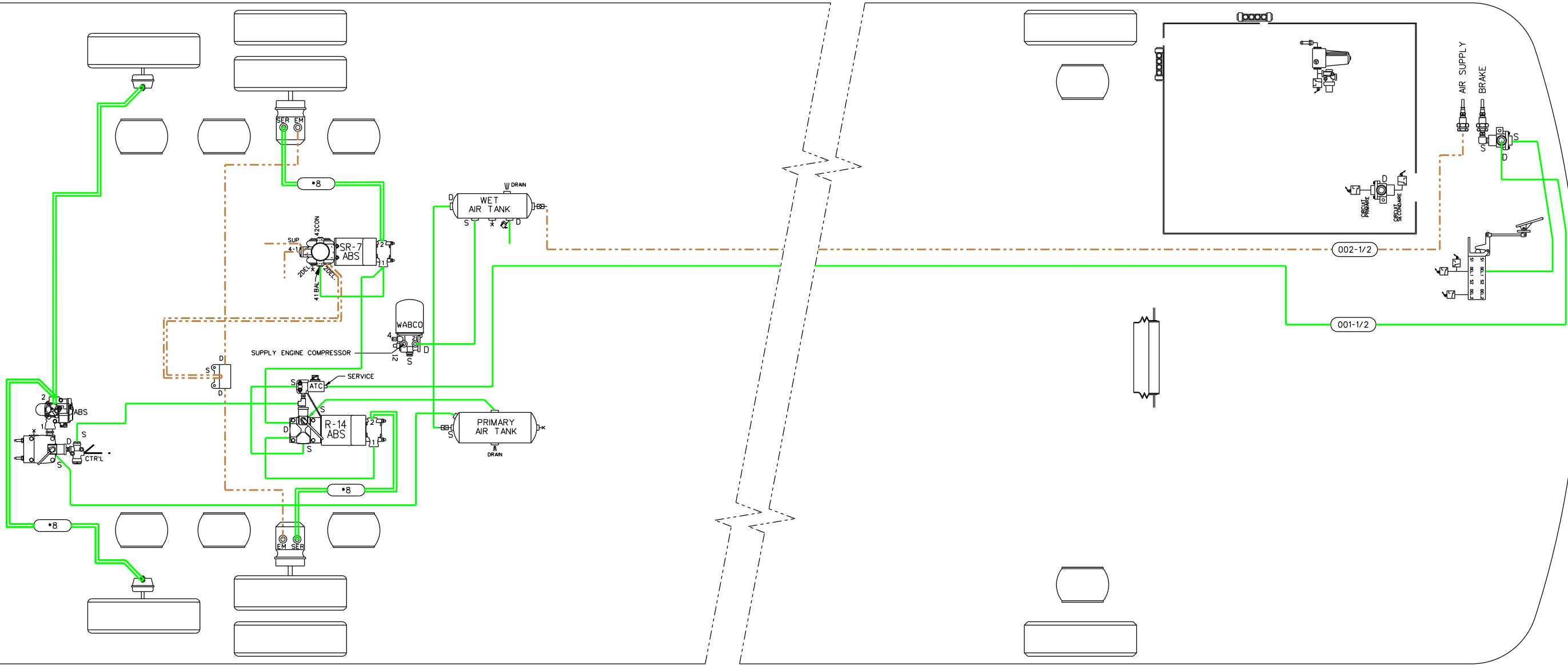


TUBE COLOR CODING		
LINE TYPE	COLOR	CIRCUIT
---	BLACK	ACCESSORIES

REV	DATE	DESCRIPTION	BY
A	2019/09	SPECIAL	Rob.
PREVOST® <small>Prevost Car Inc. Ste-Clotilde-Quebec, Canada G9R 2V9</small>			
DATE TECH	DATE	APPR	METRIC
Rob.	2019/09	M.J.H.	3/16" ANGLE
GENERAL TOL.	mm ± N/A	deg ± N/A	PODS: N/A
REF DRAWING:	D140407 PB		
MATERIAL:	INSTALLATION		
FINISH:	N/A		
REF.:	H3-45		
TITLE:	PNEUMATIC STORAGE BAY INDEPENDANTE DOORS LOCK OPTION		
PART NUMBER:	D140407SP5 CAD		

NUMEROTATION RANGE:	001 @ 199	LEGEND:	"RES-1": SERVICE TANK	"PT.": PILOT
LAST NUMBER USED:	-	"SER": SERVICE	"P": PRESSURE	"A": DRAIN
UNUSED NUMBERS:	-	"EM": EMERGENCY	"A": ACCESSORY	"S": SOLENOID
		"D": EXHAUST	"D": DELIVERY	"SP": SPRING
		"BAL": BALANCE	"S": SUPPLY	

THIS DOCUMENT IS THE EXCLUSIVE PROPERTY OF PREVOST CAR INC. STE-CLAUDE, QUE., AND MAY NOT BE USED, OR REPRODUCED, NOR ITS CONTENT OR PART THERE OF DISCLOSED TO OTHERS BY ANY PERSON OR COMPANY SINCE WITH THE EXPRESS CONSENT IN WRITING FROM PREVOST CAR INC.



TUBE COLOR CODING		
LINE TYPE	COLOR	CIRCUIT
---	BROWN	AIR LINE SUPPLY
—	GREEN	AIR LINE BRAKE

NUMEROTATION RANGE:	001 @ 002
LAST NUMBER USED:	002
UNUSED NUMBERS:	

LEGEND:	"SL": STOP LIGHT SWITCH	"PT.": PILOT
"SER": SERVICE	"RES-1": SERVICE TANK	"A": DRAIN
"EM": EMERGENCY	"A": ACCESSORY	"S": SOLENOID
"EXH": EXHAUST	"D": DELIVERY	"SP": SPRING
"BAL": BALANCE	"S": SUPPLY	

THIS DOCUMENT IS THE EXCLUSIVE PROPERTY OF PREVOST CAR INC. SITE-CLARE, QUE. AND MAY NOT BE USED, OR REPRODUCED, NOR ITS CONTENT OR PART THERE OF DISCLOSED TO OTHERS BY ANY PERSON OR COMPANY SAVE WITH THE EXPRESS CONSENT IN WRITING FROM PREVOST CAR INC.

REV	DATE	DESCRIPTION	BY
A	2020/03	SPECIAL	Rob.
PREVOST			
3° ANGLE METRIC			
ENG. TECH:	DATE:	APPR:	
Rob.	2020/03	M.J.H.	
GENERAL TOL.	ECHELLE:	PODS:	
mm ± N/A deg ± N/A	N/A		
MATERIAL:	INSTALLATION		
FINISH:	N/A		
REF.:	SPECIAL H3-45 #L-1092		
TITLE:	PNEUMATIC DIAGRAM		
PART NUMBER:	D140407SP6		
			CAD