

# PREVOST

## Instruction Sheet

## IS-12008

### REPLACEMENT OF 062720 AND 063344 AC MODULES

Module is obsolete and is replaced by a new module and harness.

### MATERIAL

Kit #068562 includes the following parts:

Part No.	Description	Qty
068539	Harness "Y" HVAC	1
562809	Module, rear A/C	1
IS-12008	Instruction Sheet	1
FI-12008	Feuille d'instructions	1

#### *NOTE*

*Material can be obtained through regular channels.*

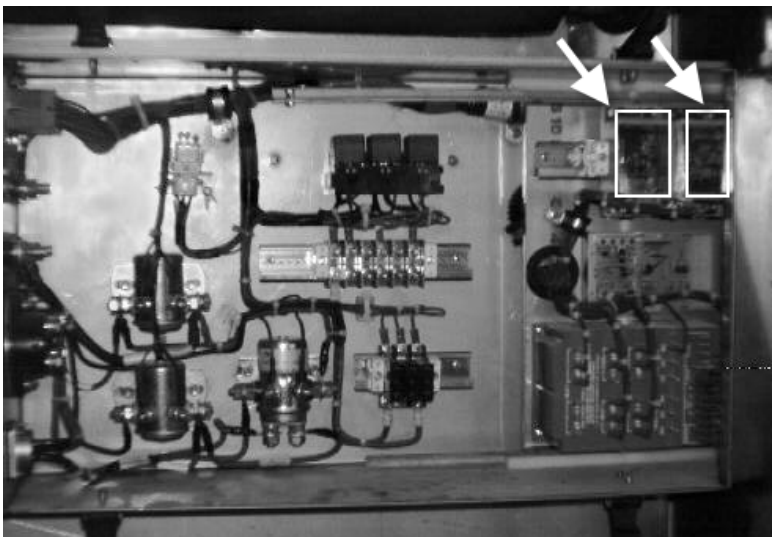
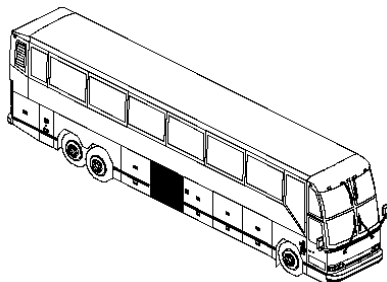
### PROCEDURE



#### **DANGER**

Park vehicle safely, apply parking brake, stop engine and set battery master switch(es) to the OFF position prior to working on the vehicle.

1. In condenser compartment, remove the A/C and heating junction box cover.
2. Disconnect and remove A/C control module 062720 & A/C logic module 063344



3. Install new module 562809.

Note that once the modification is completed, one or both yellow "HUMID." Indicator lights will stay on depending on conditions. This is normal.



4. Connect new 068539 harness.

Plug C139 to new module.

Plug C139B to C139B harness on A/C panel.

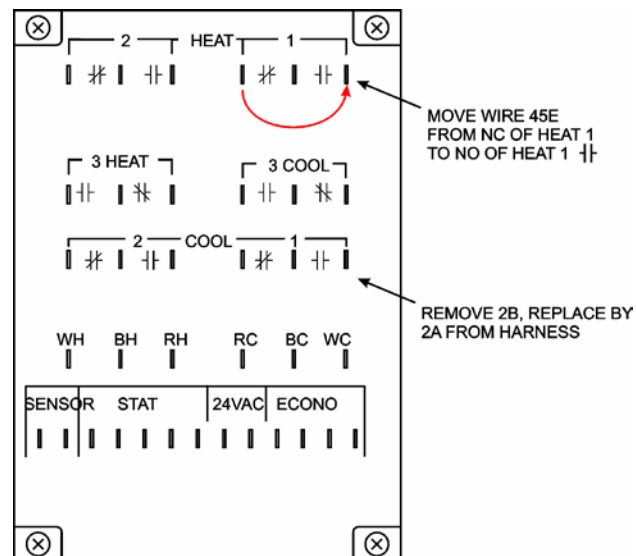
Plug C138 to C138 harness on A/C panel.

In the A/C and heating junction box, perform these wiring modifications.

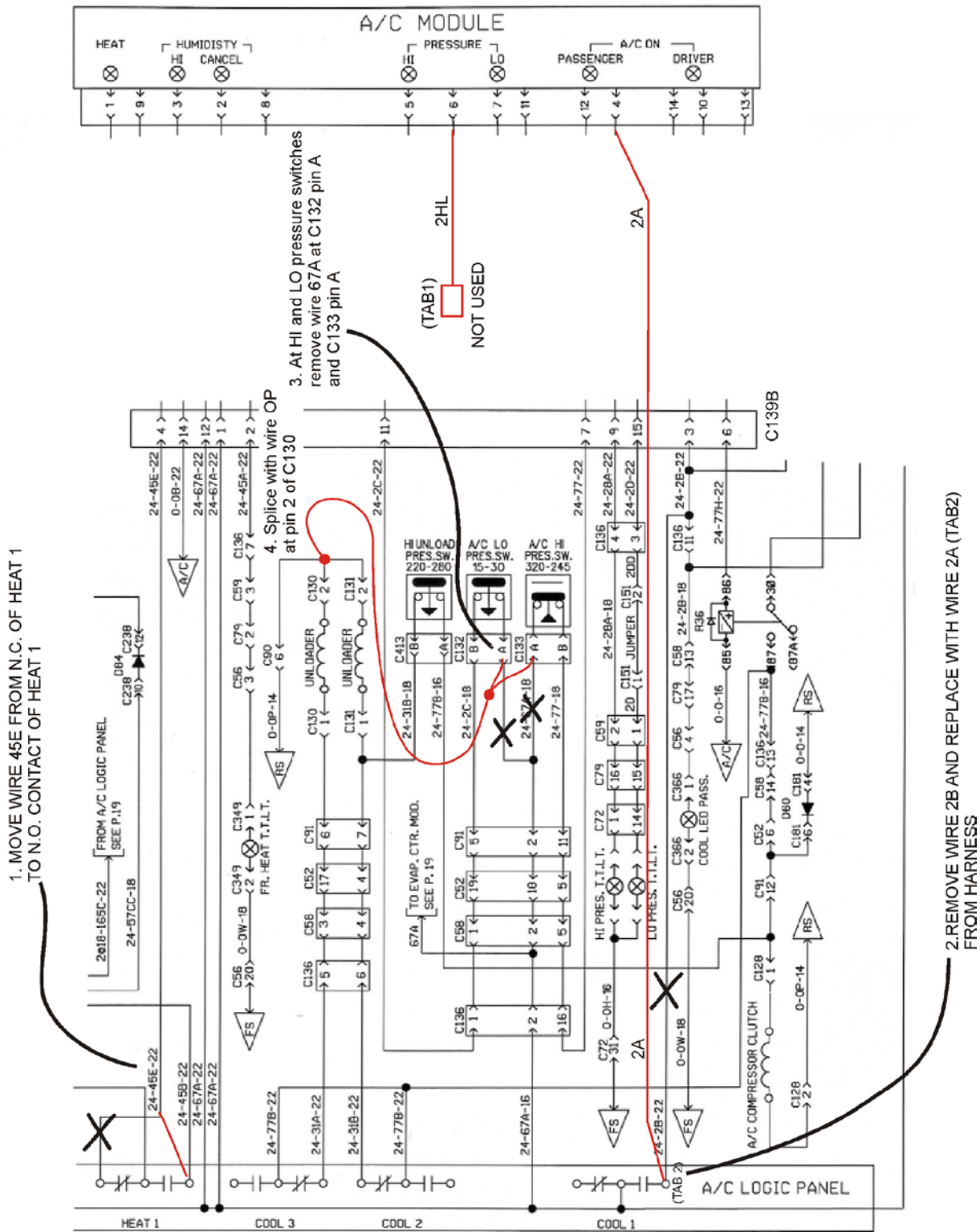
1. Move wire 45E from N.C of HEAT 1 to N.O. contact of HEAT 1.

2. Remove wire 2B and replace with wire 2A (TAB2) from harness.

*Seal 2B wire with heat shrink tubing.*



NEW MODULE 562809



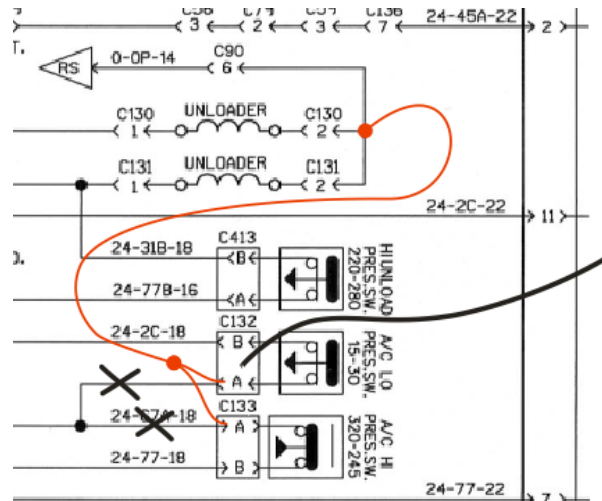
- On the compressor, locate pin A of connectors C132 & C133 on the low & high pressure switches. Cut wire 67A leaving sufficient length.

*Seal unused end with heat shrink tubing.*

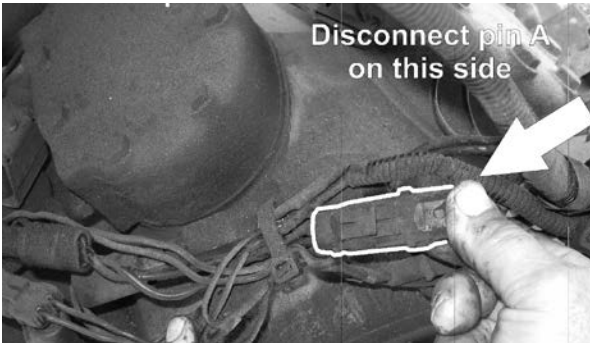
- Splice wires with OP Wire at pin 2 of unloader connector C130.

End result is a "Y" connection. Use black wire as required.

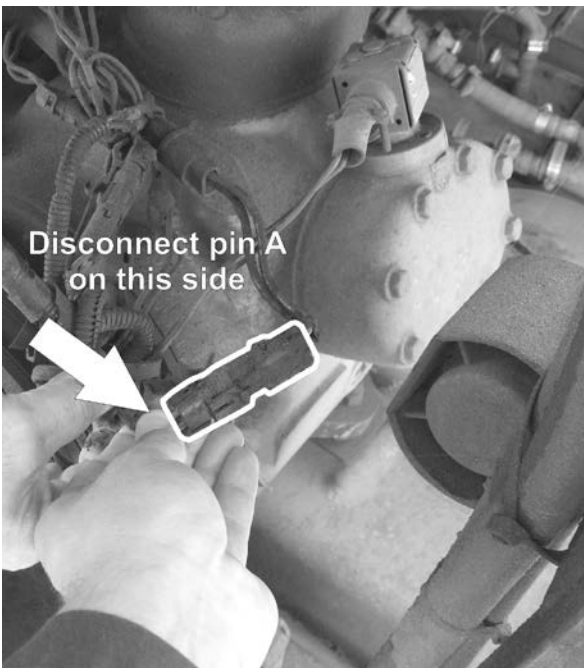
Refer to photos below for further details.



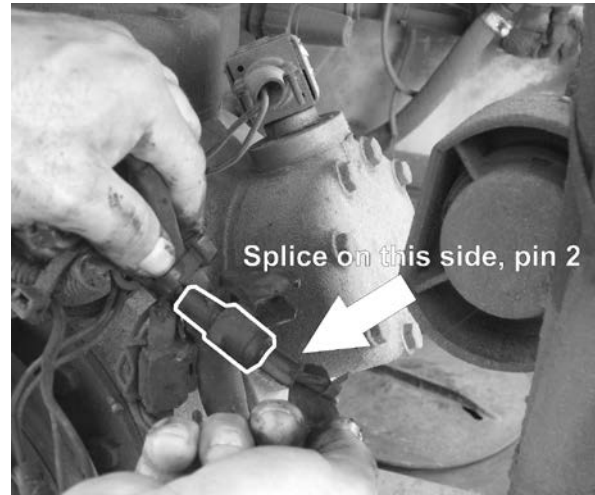
High Pressure



Low Pressure

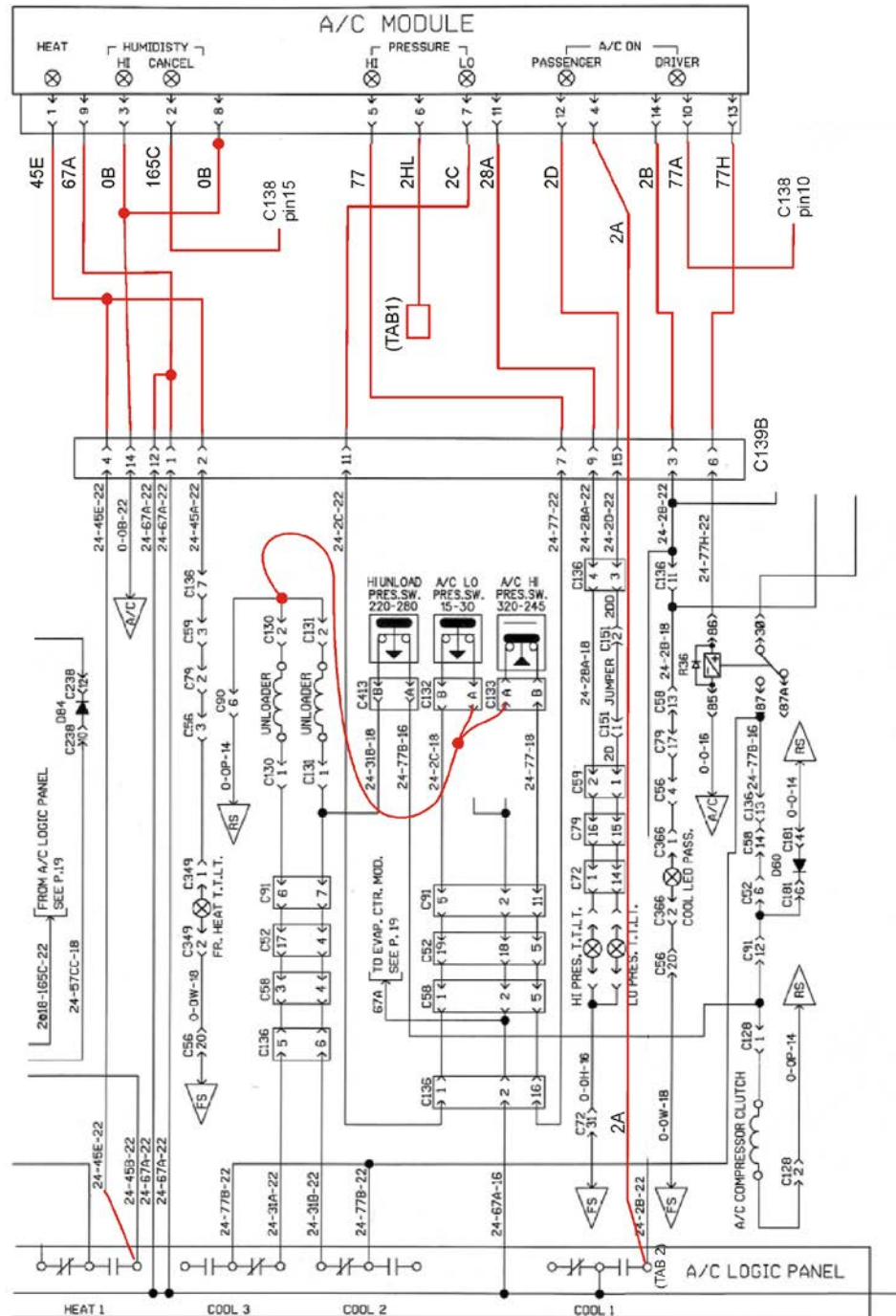


Unloader.



5. After performing the modifications, verify proper operation of the A/C system.

See below the resulting circuit after connecting the harness and performing the modifications.



## PARTS / WASTE DISPOSAL

Discard waste according to applicable environmental regulations (Municipal/State[Prov.]/ Federal)