

PREVOST

Instruction Sheet

IS-19920

Volvo 9700 ELD Interface Kit for US07 Vehicles

First Release

09-26-2019

APPLICATION

Model	VIN
Volvo 9700 Model Year : 2009 - 2011	From 3CET2M62795 <u>127142</u> up to 3CET2S229 <u>B5142239</u>

MATERIAL

Order Kit # **7775219**, which includes the following parts:

Part No.	Description	Qty
23446645	ELD Harness US07/US10 (9 PIN)	1
23446650	ELD Jumper Harness US07	1
20890176	Control Unit FMS Gateway	1
390038	ELD Decal	1
23338070	OBD Decal (Volvo)	1
952641	Adel Clamp Rub #35	1
952634	Adel Clamp Rub #24	1
500124	Screw SS #8X1/2	4
504637	Cable tie Nylon STD Black	15
IS-19920	Instruction Sheet (EN)	1

Equipment required:

Description	Qty
Laptop with PTT (Premium TechTool, latest version installed) & related cables.	1

NOTE

Material can be obtained through regular channels.

PROCEDURE



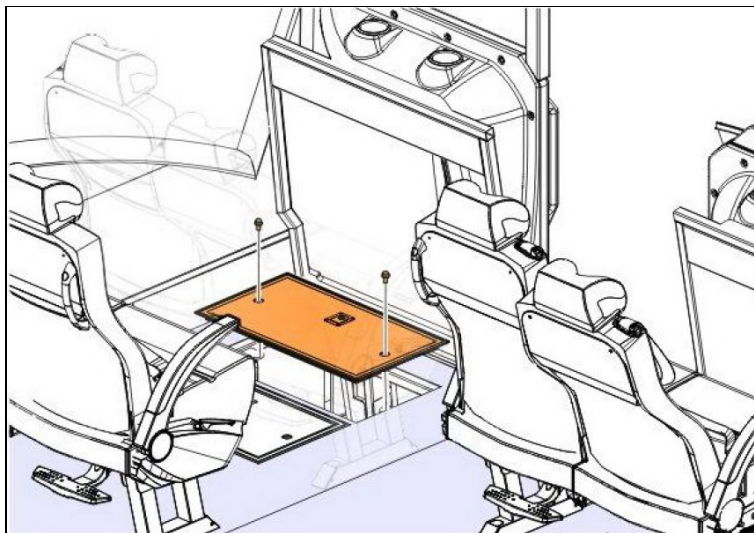
DANGER

Park vehicle safely, apply parking brake, stop engine. Prior to working on the vehicle, set the ignition switch to the OFF position. Wait 20 seconds and set the main switch and the battery switch to the OFF position. Disconnect negative terminals from the batteries.

Lock out & Tag out (LOTO) must be performed during set-up, maintenance or repair activities. Refer to your local procedure for detailed information regarding the control of hazardous energy.

PART 1: FMS GATEWAY MODULE INSTALLATION

1. Open the electrical compartment located behind the driver's seat.



2. Remove both drivers' lateral utility compartment doors.



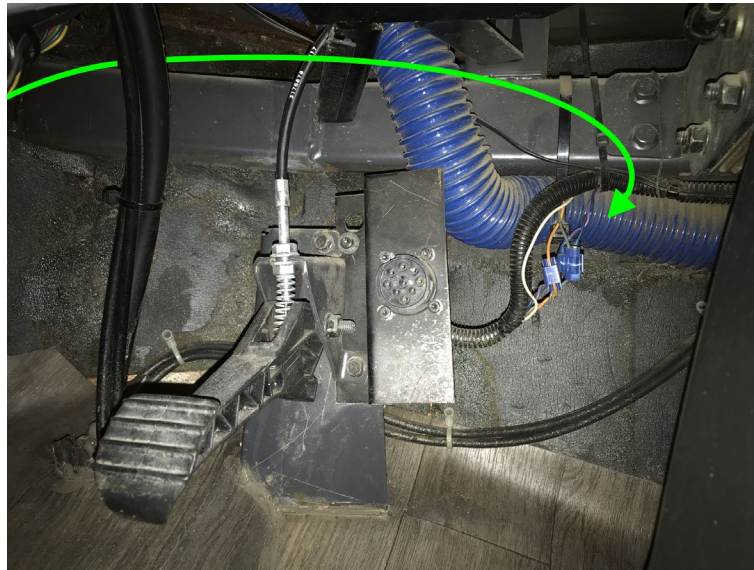
3. Route the ELD interface harness **23446645** from the electrical compartment up to the driver's area (diagnostic connector area).



- From the electrical compartment, route the diagnostic connector side of the harness (two 9 PIN connectors) inside the lateral utility compartment.



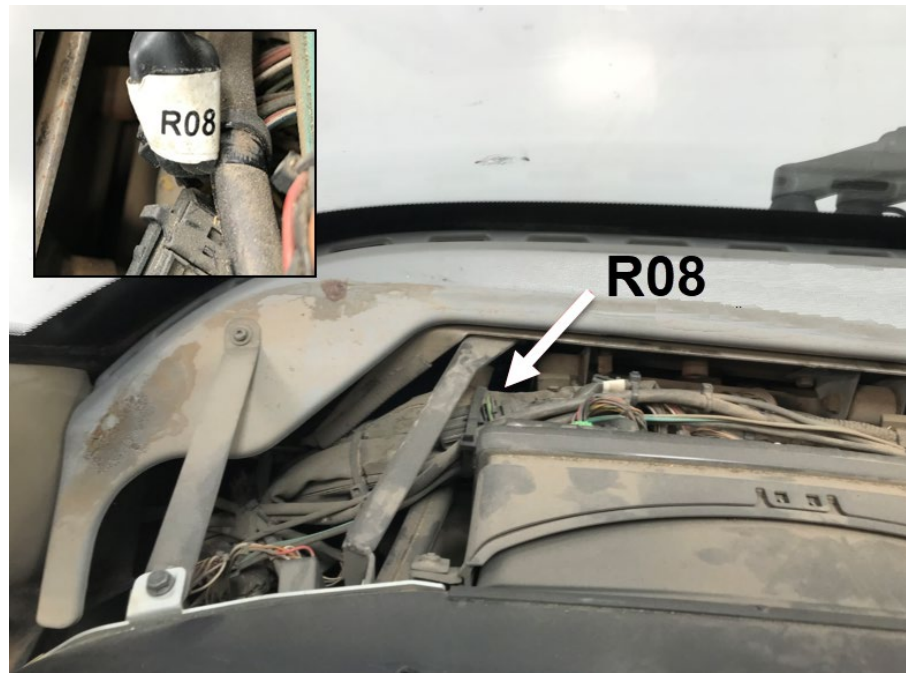
- Pass the harness from the lateral compartment to the driver's foot area (diagnostic connector area).



4. Remove the vehicle dash cover (4 Torx screws under the dash cover).



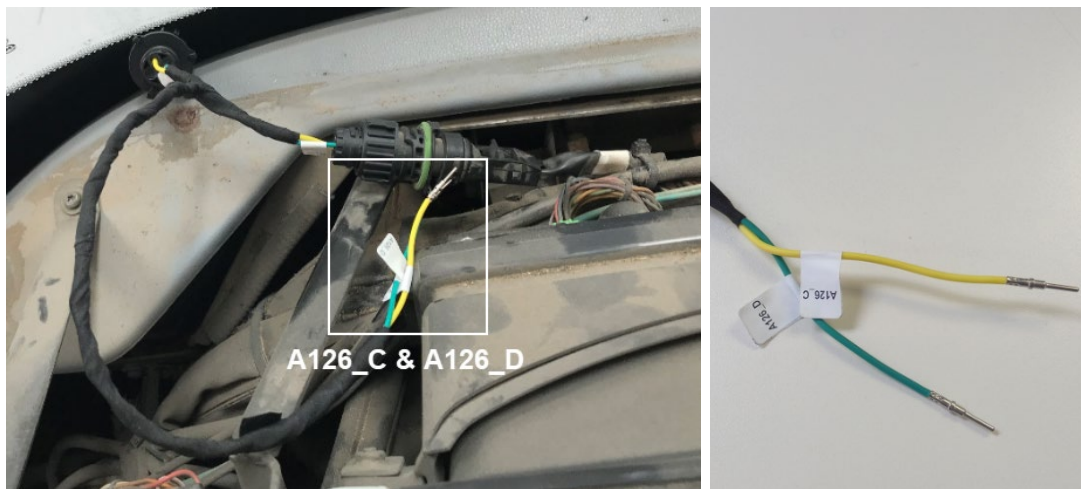
5. Locate the R08 connector under the dash.



6. Connect the jumper harness XC125 connector to the R08 connector.



7. Route the jumper harness A126_C and A126_D wires under the dash (diagnostic connector area).



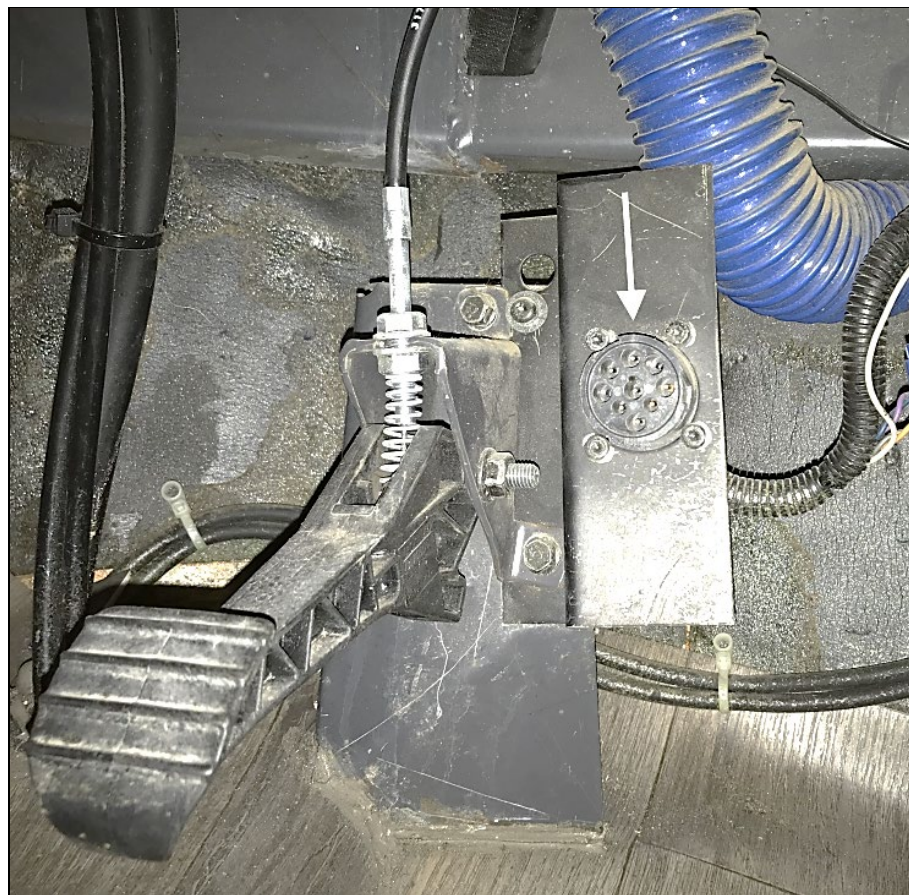
8. Secure the R08/XC125 connectors and the R13_A resistor with supplied cable ties.



9. Reinstall the vehicle dash cover.

10. Remove the vehicle 9 PIN diagnostic connector from the underside of the dashboard (drivers' side).

- Remove the connector from the support bracket (4 Torx screws).
- Also remove the bracket from the vehicle.

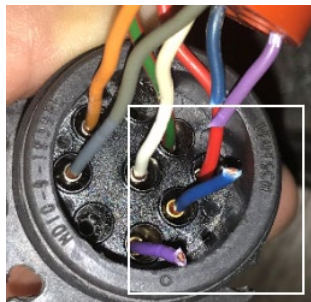


11. Connect the jumper harness wires A126_C and A126_D to the diagnostic connector C and D cavities.

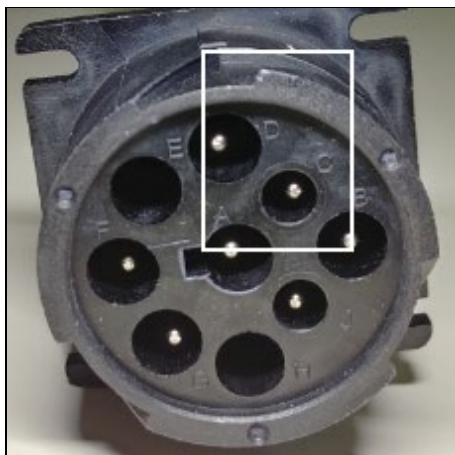
NOTE

*Some vehicles may already have wires connected to the C & D cavities. These wires will need to be cut and removed using an appropriate connector removal tool (Volvo # **9808646** or equivalent).*

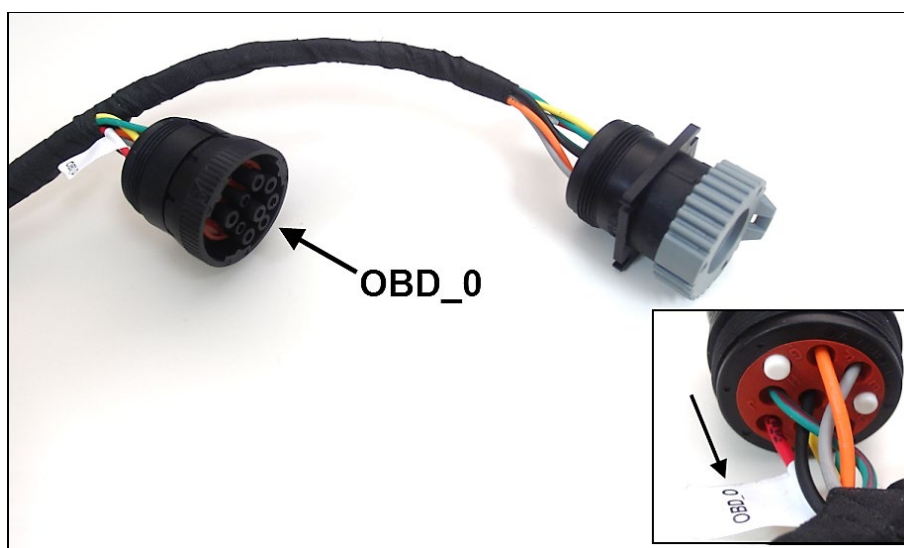
Protect cut wire ends with shrink tube and secure wires.



Volvo # 9808646 extractor

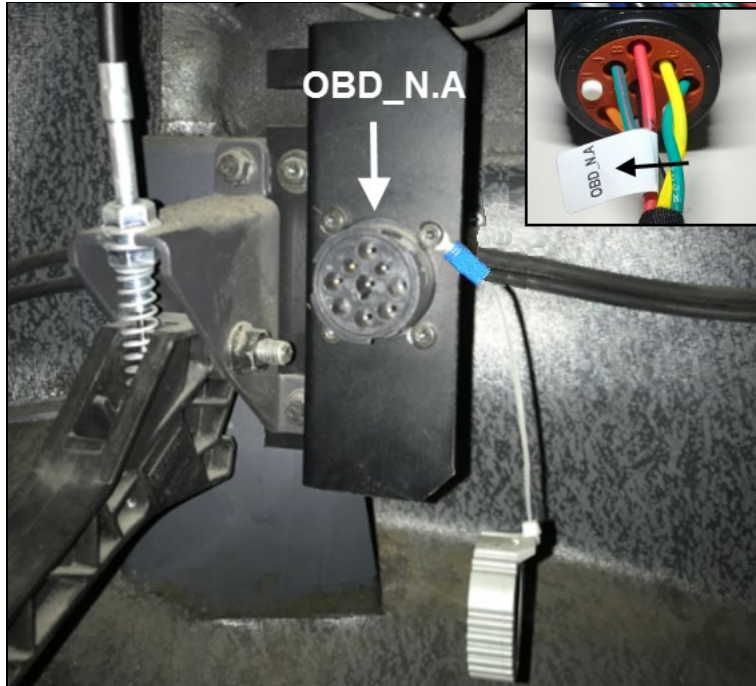


12. Connect the vehicle diagnostic connector (previously removed from the bracket) to the ELD harness round 9 PIN connector identified **OBD_0**.



13. Install the ELD harness diagnostic connector identified **OBD_N.A** (with square flange).

- Remove the grey protective cap and secure the connector square flange **OBD_N.A** to the mounting bracket (4 previously removed Torx screws).
- Install the bracket at its original location under the dashboard.



1. Inside the electrical compartment, secure the ELD FMS gateway module **20890176** to the compartment wall.

NOTE

It is also possible to install the ELD device directly inside the lateral utility compartment (per customer request).



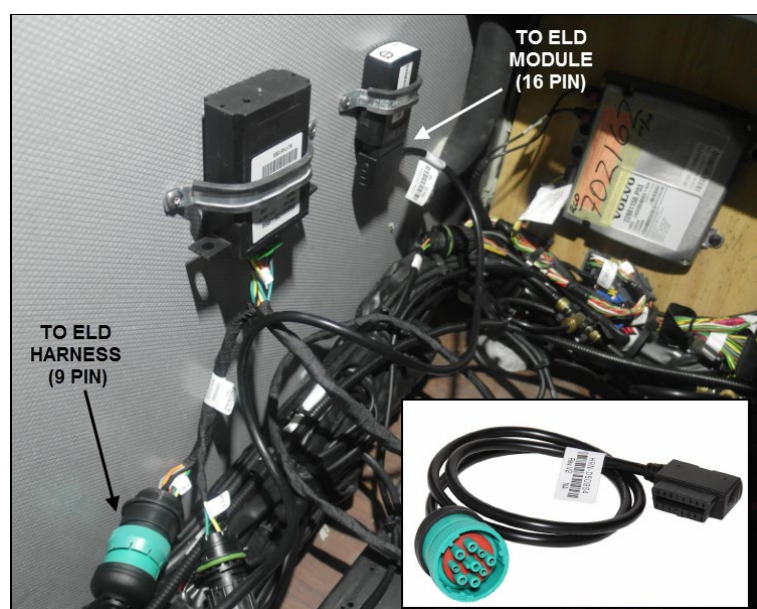
- Make a support bracket for the module using the supplied #35 Adel clamp **952641** as shown.



- Secure the module to the compartment wall using the supplied **500124** screws (module connector facing down). Connect the ELD harness **A946** green connector to the gateway module.



2. (Optional step) If using a Volvo branded ELD device (part # 7770385). Secure the ELD device next to the gateway module using the supplied #24 Adel clamp **952634** (connector facing down).
 - Make a support bracket for the module using the Adel clamp and secure to the electrical compartment wall next to the FMS Gateway module.
 - Connect the module to the ELD harness round 9 PIN connector identified **A126_A** (remove gray protective cap) using the adaptor cable supplied with the ELD module.



NOTE

Do not discard the gray protective cap.
Secure the cap to the cable using a small cable tie.



- Secure the ELD harness inside the electrical compartment, at the bottom of the lateral utility compartment and under the dash using cable ties.



CAUTION

Make sure the harness is not interfering with the controls or the driver's movements under the dash area.

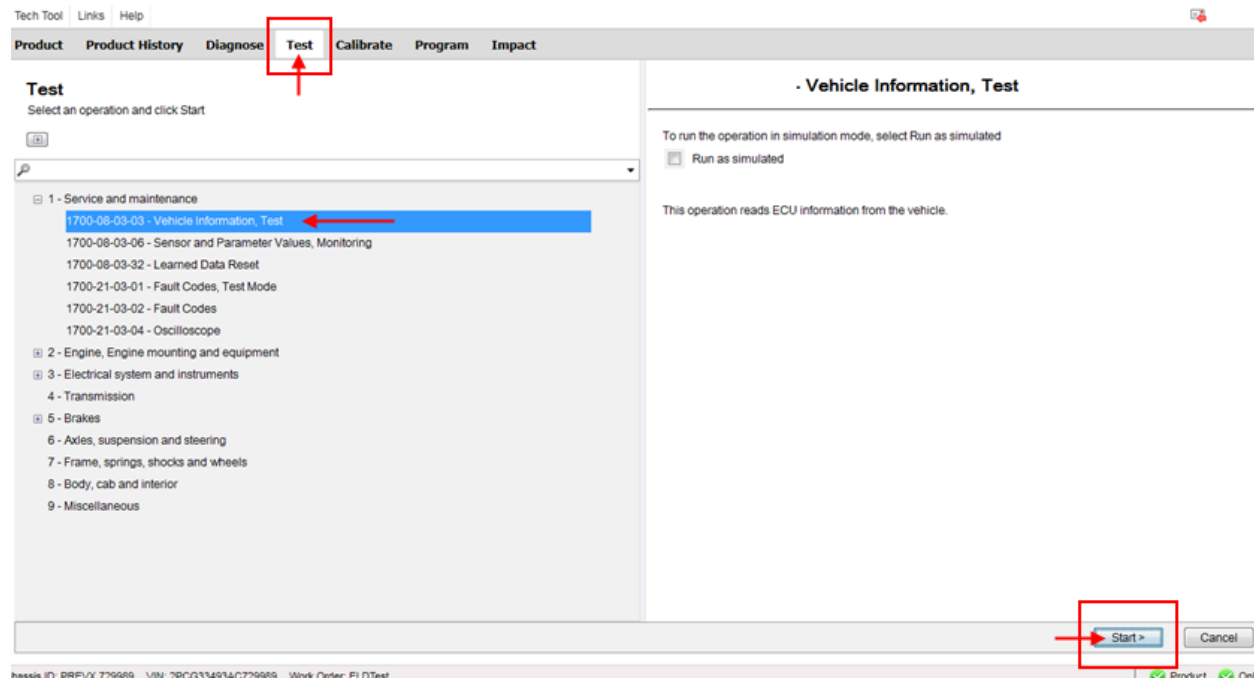
- Install ELD and OBD warning decals.
 - Install the OBD decal **23338070** on the lower part of the dashboard (above the OBD connector). When using a Volvo ELD device, also install the ELD decal **390038** over the ELD device in the electrical compartment.



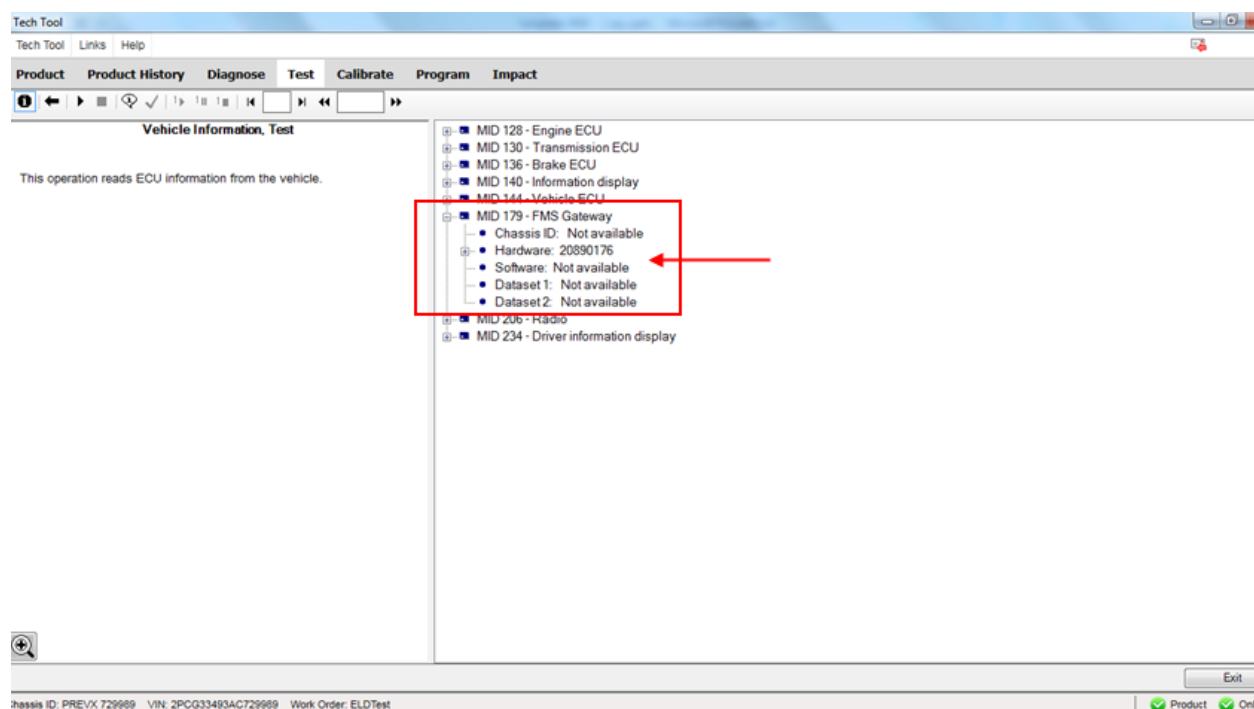
- Reinstall the electrical compartment cover and lateral compartment doors.

PART 2: FMS GATEWAY MODULE PROGRAMMING

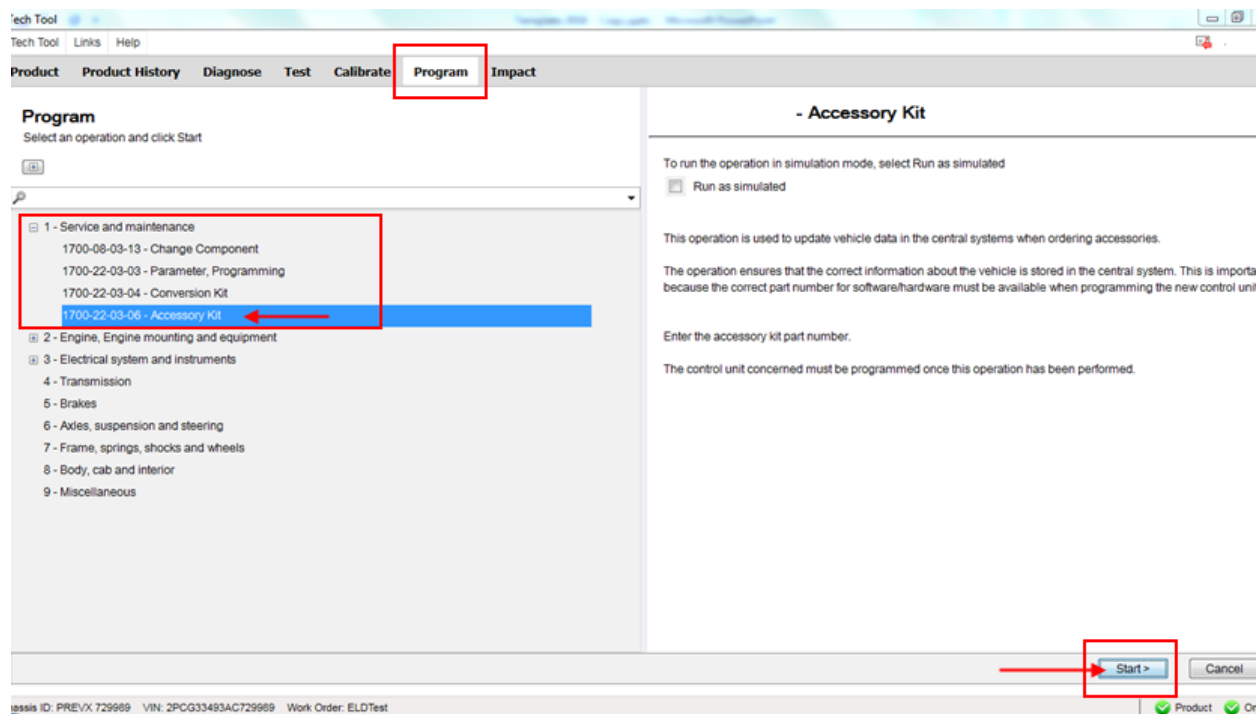
1. Connect to PTT (Premium Tech Tool) and select TEST. Expand operation *Service and Maintenance*, select *Vehicle Information Test* and click START.



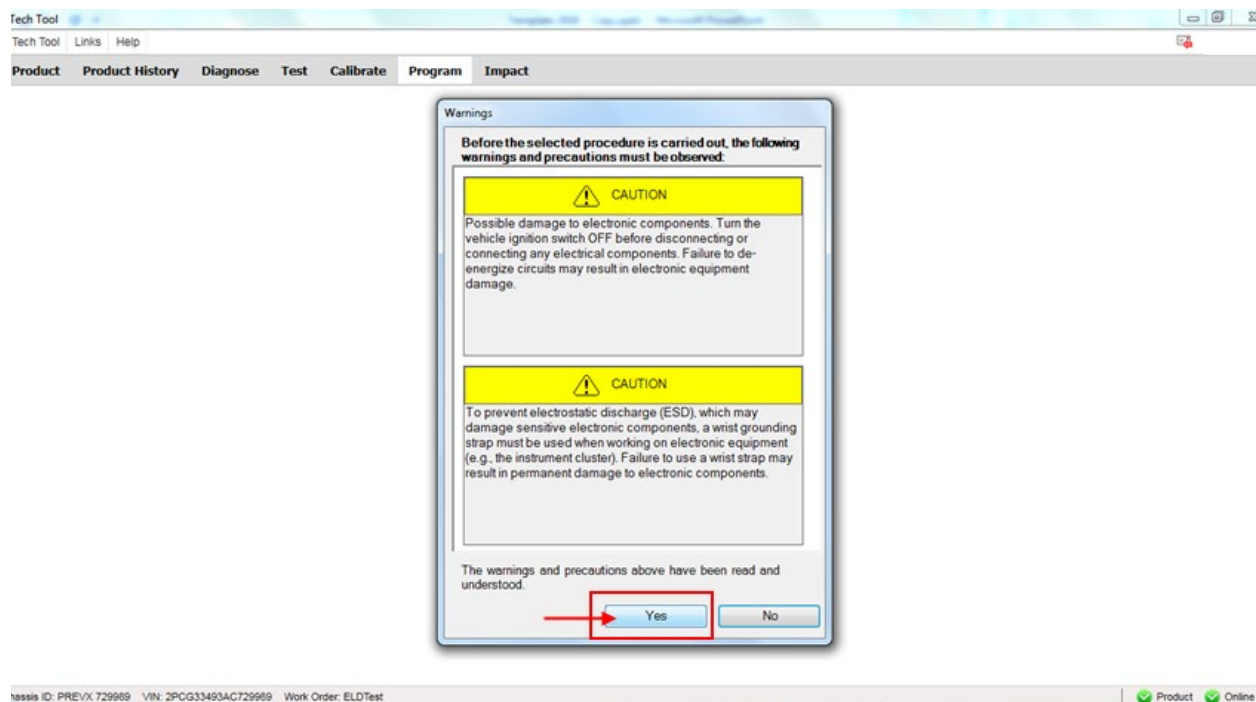
2. Confirm in Vehicle Information Test that MID 179 – FMS Gateway is present, but that related information's are not available.



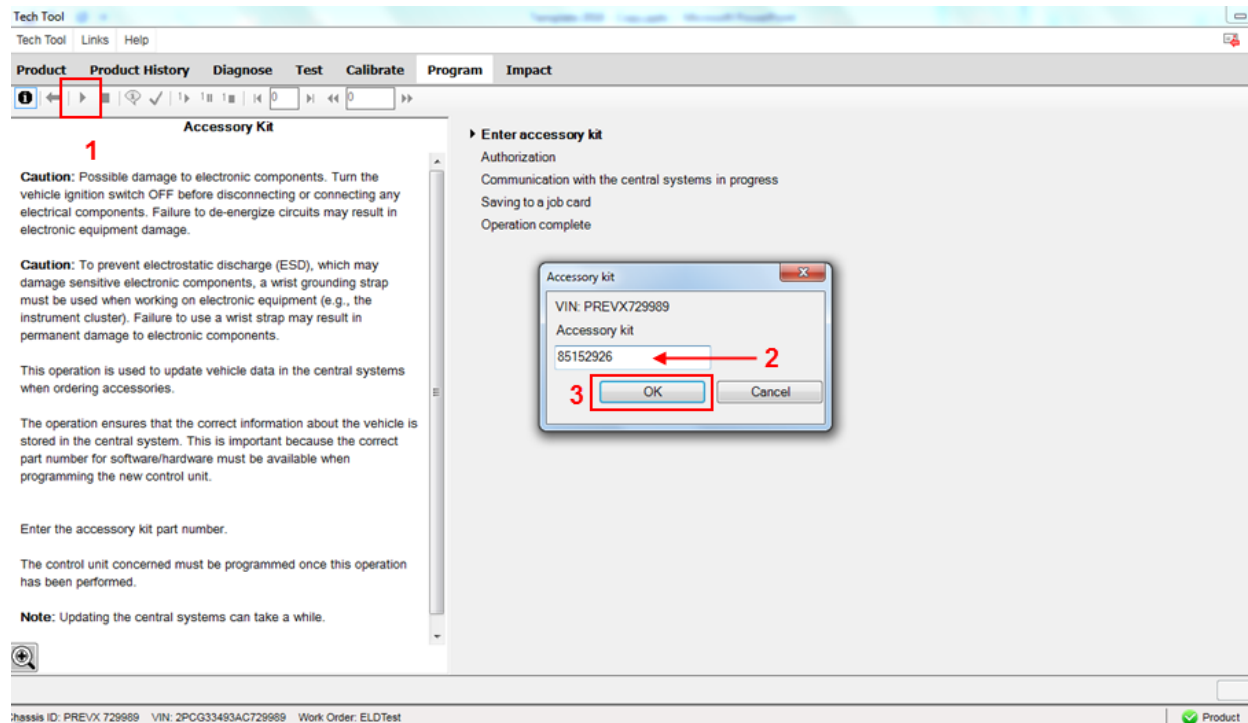
- Exit the TEST menu and select PROGRAM. Expand operation *Service and Maintenance*, select *Accessory Kit* and click START.



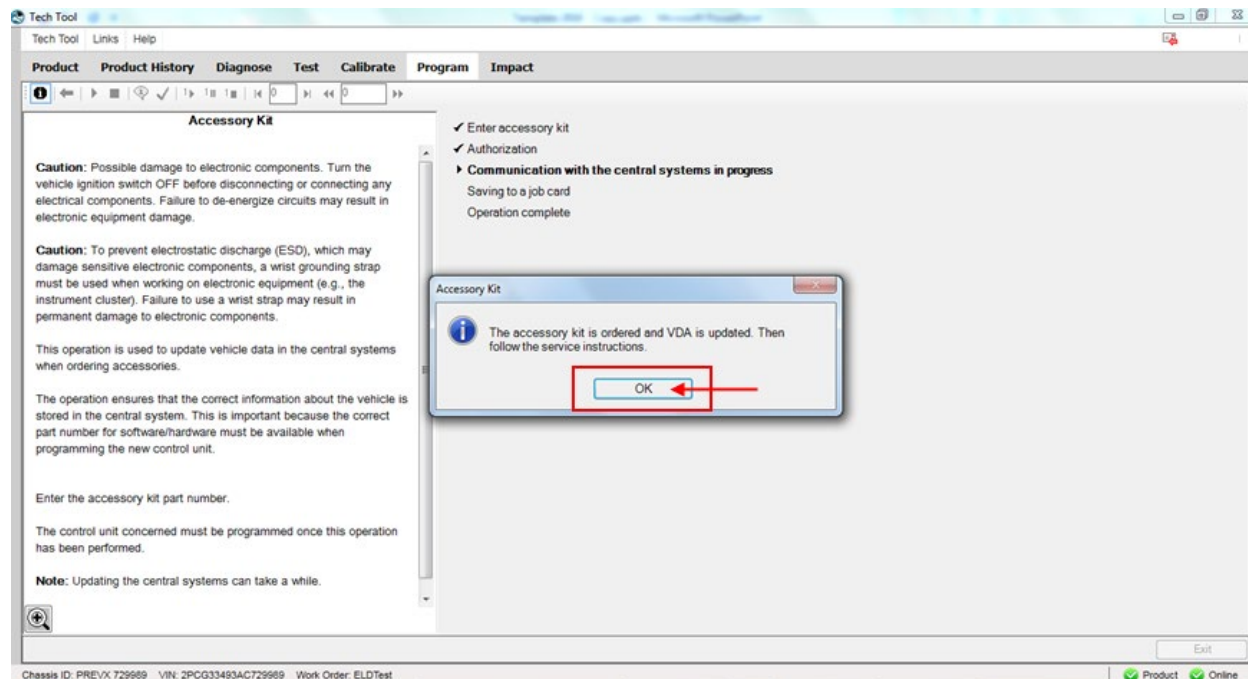
- Click YES on the following message box.



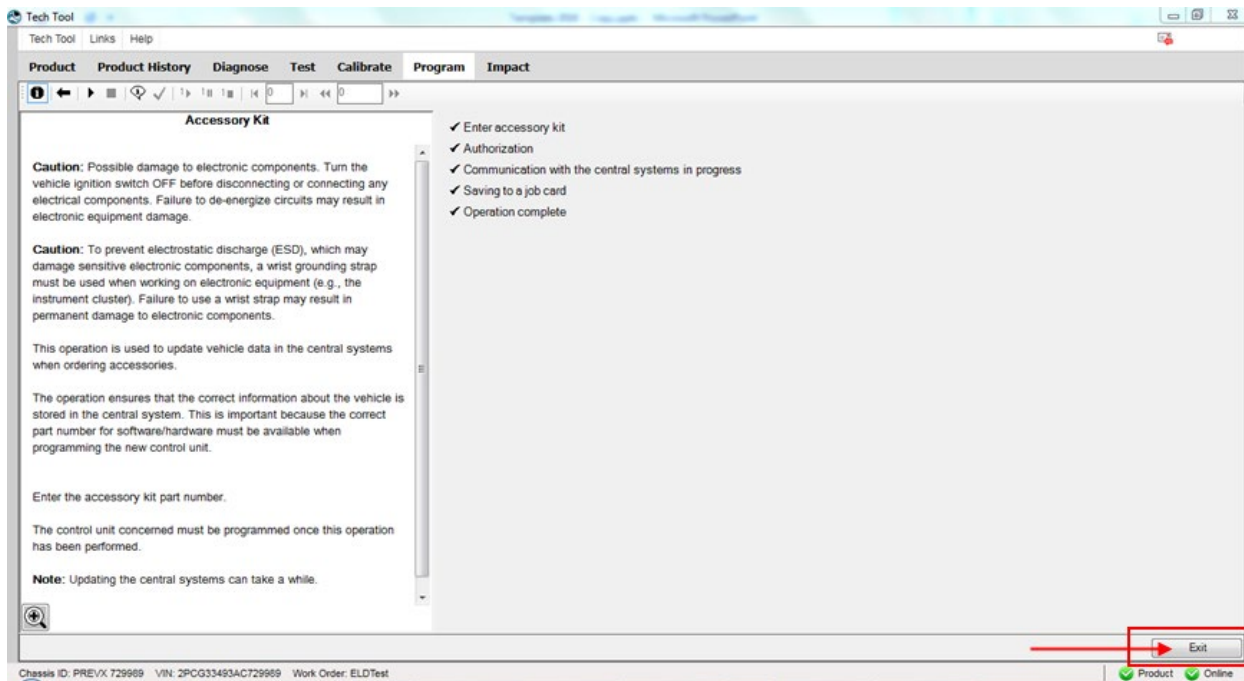
5. Press the PLAY button to open the dialog box then enter Accessory Kit # **85152926**. Click OK.



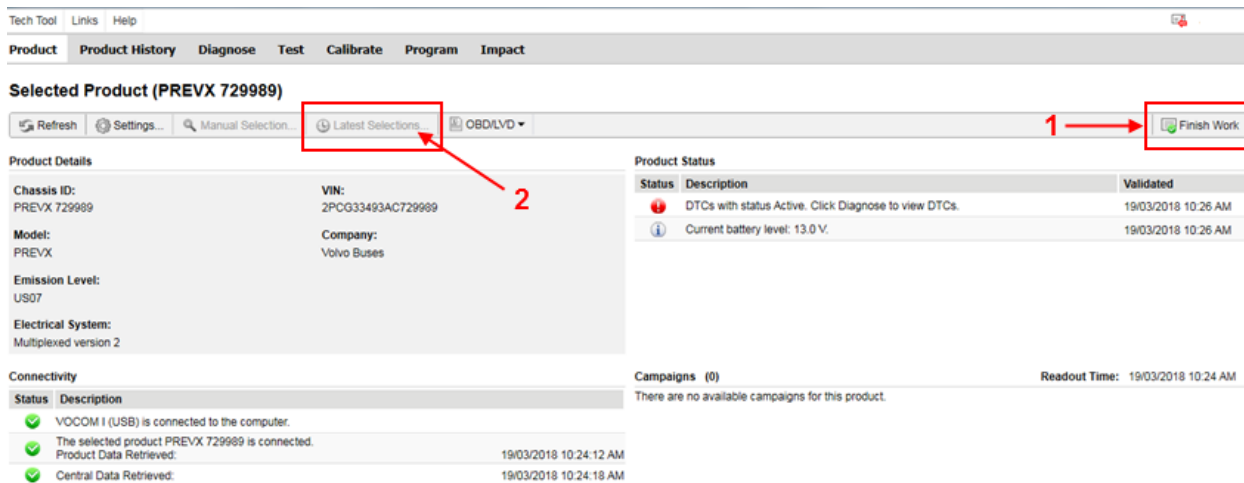
6. Complete the action by clicking OK on the following message.



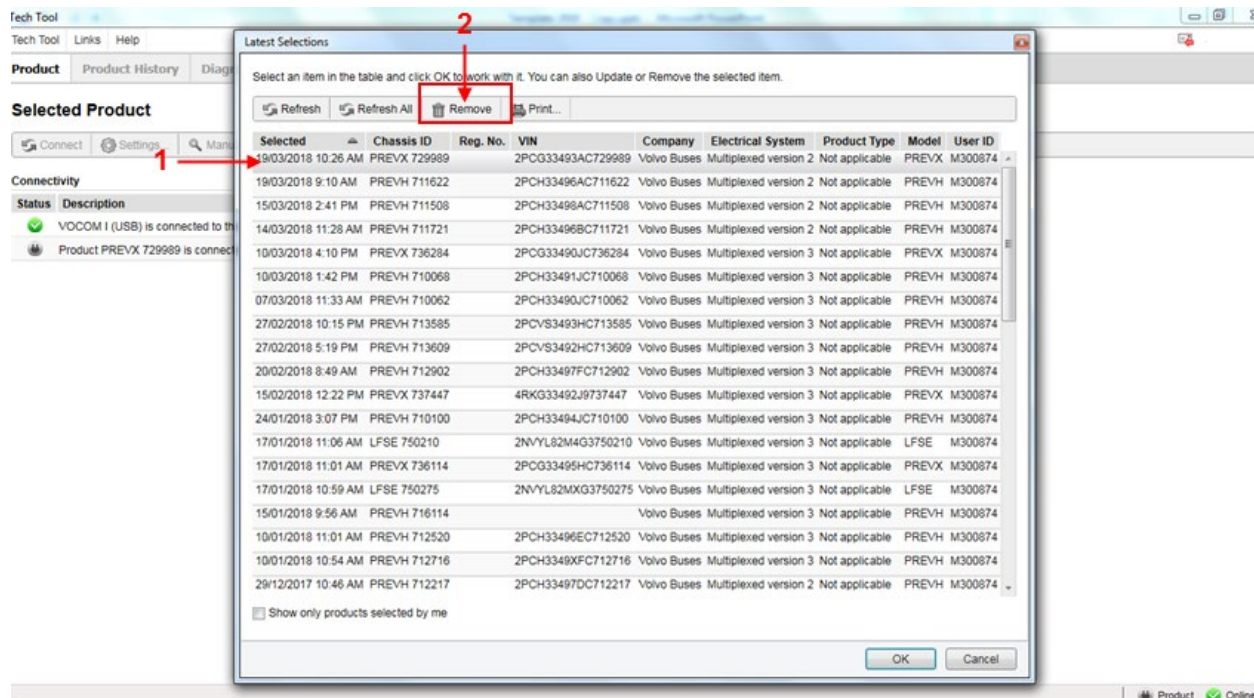
7. Once completed, exit the PROGRAM menu.



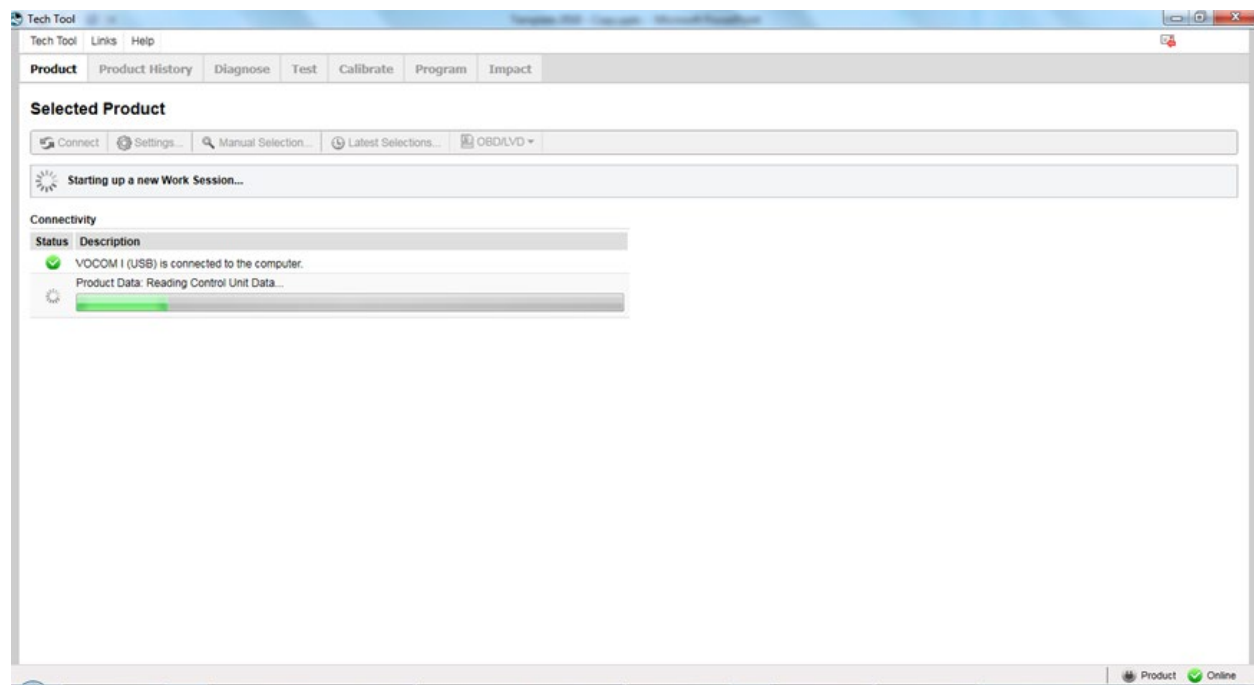
8. Select the PRODUCT menu and click *Finish Work* then choose *Latest Selections*.

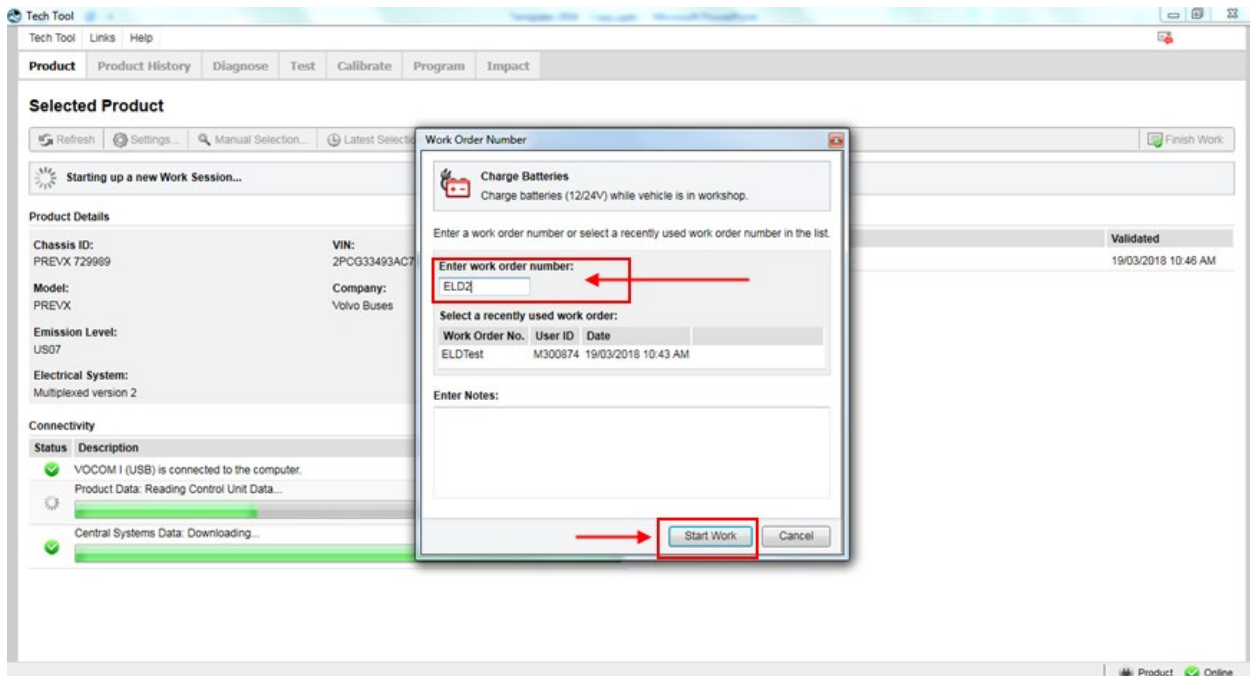


- In the Latest Selection list, select (click to highlight) the corresponding job (validate with Chassis ID or VIN) then click *Remove*. The system is now ready to refresh the MID 179 – FMS Gateway information's and program the FMS Gateway module.

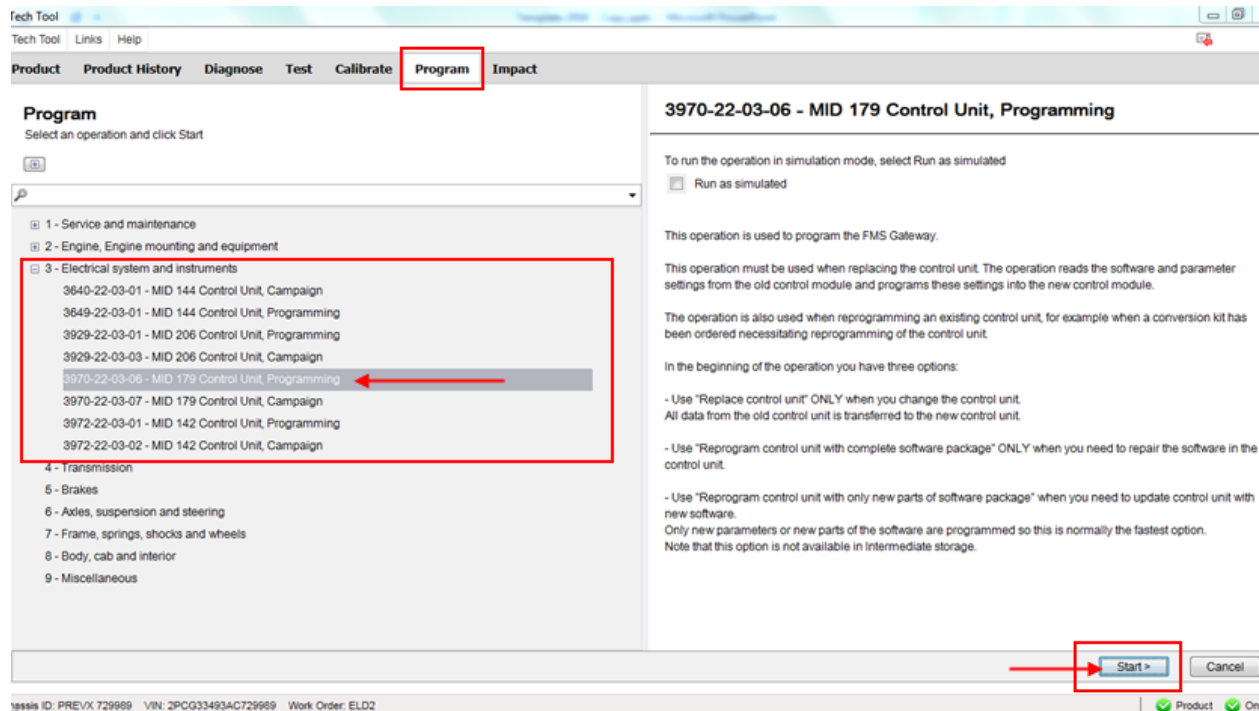


- In the PRODUCT menu, start a new work session.

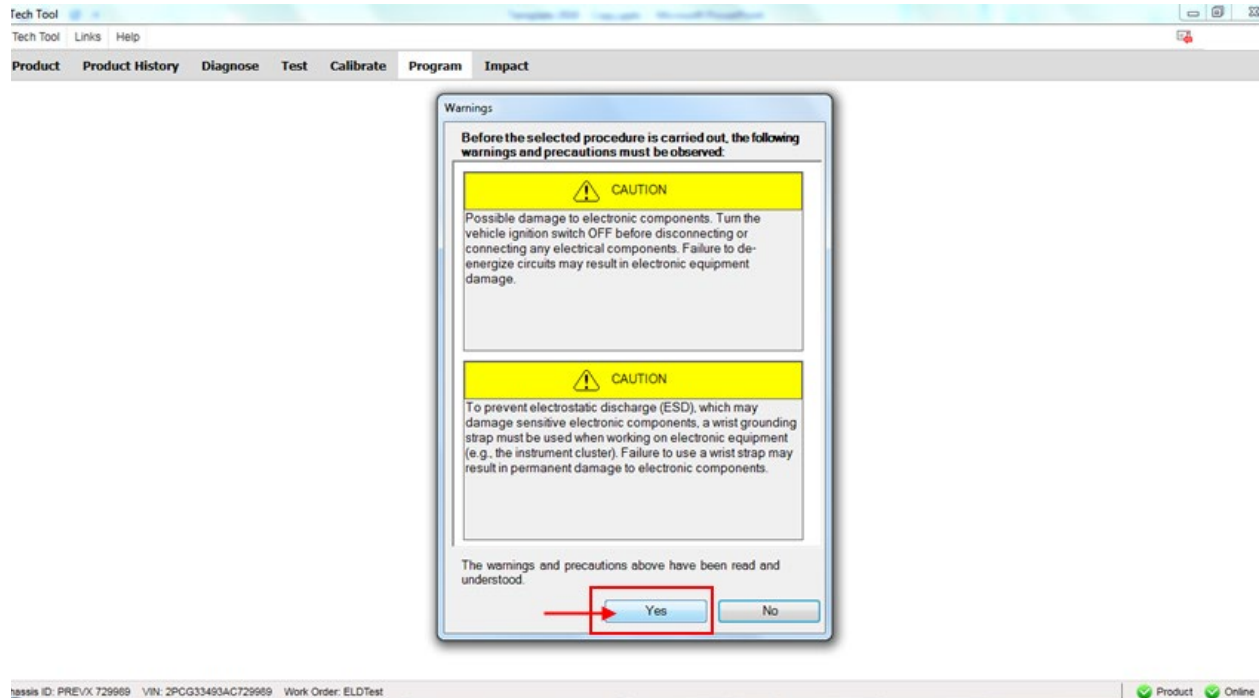




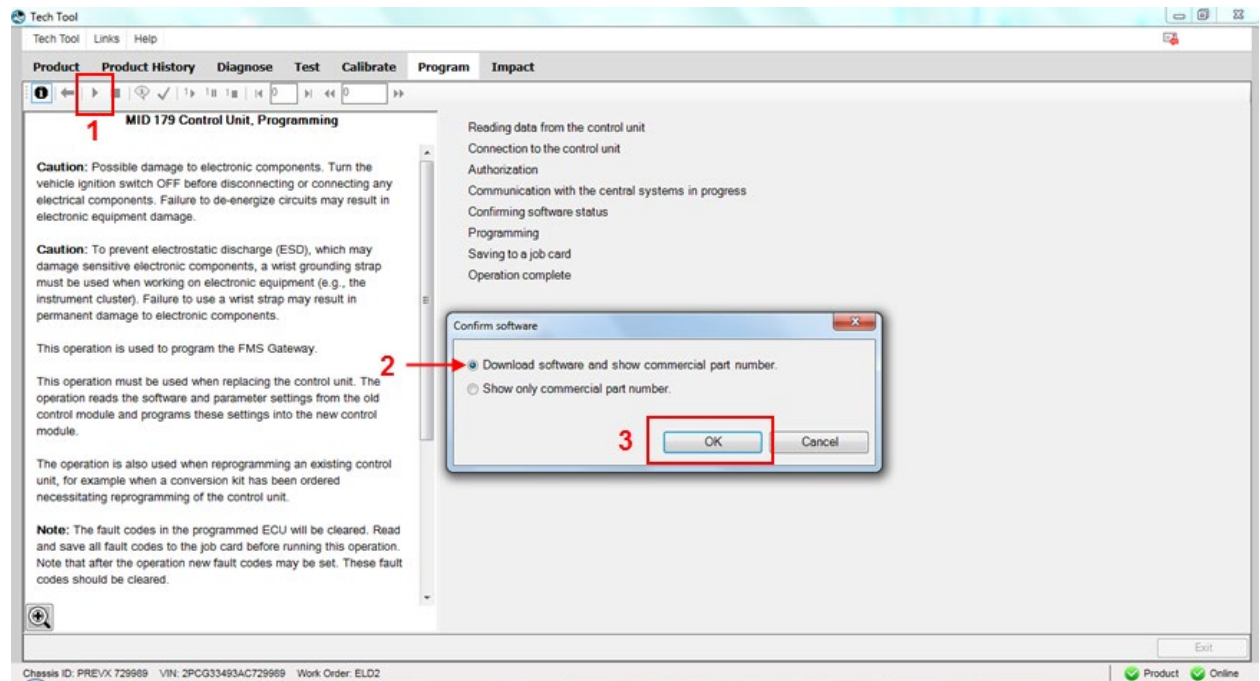
11. Go to the PROGRAM menu, expand the *Electrical System and Instruments* operation and select MID 179 Control Unit Programming option (click START).



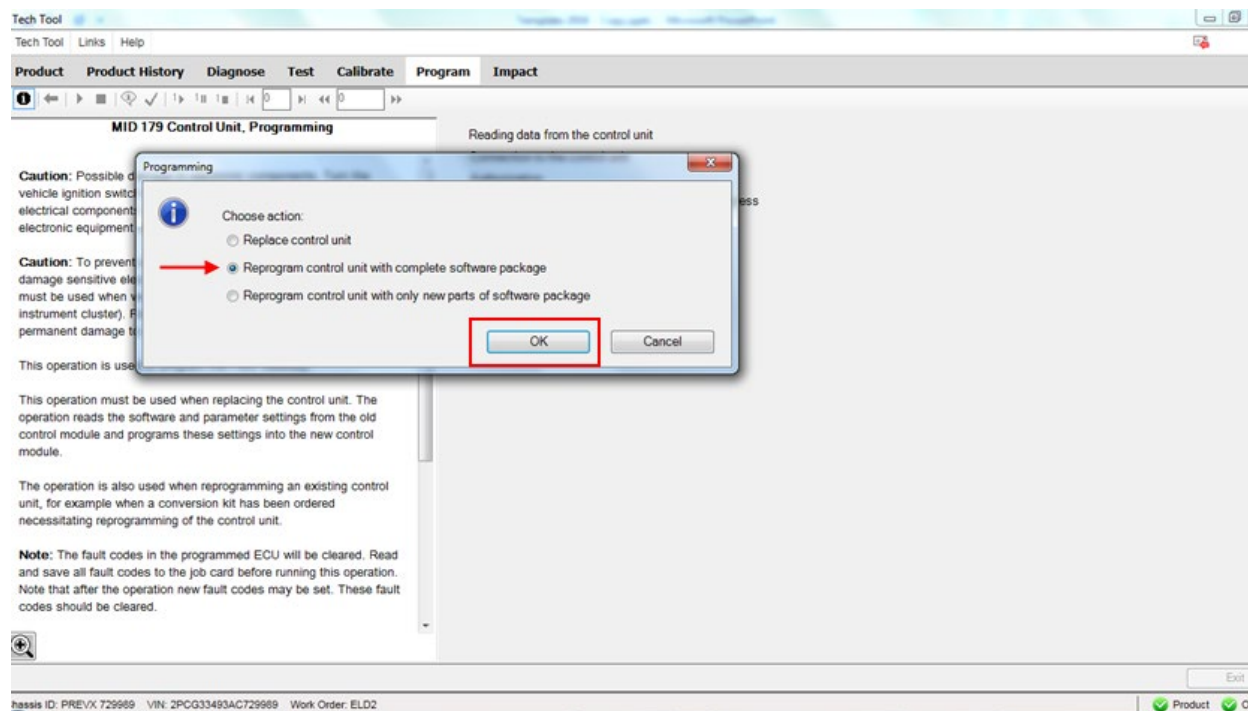
12. Click YES on the following message box.



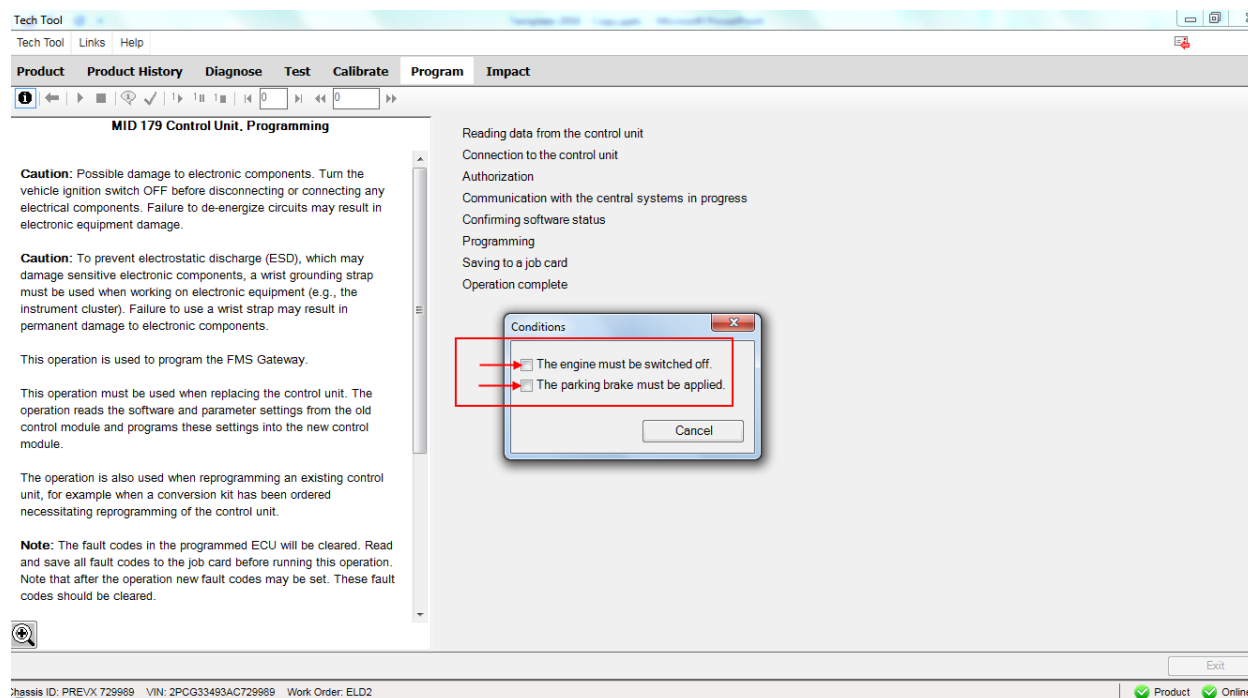
13. Click PLAY ▶ to open the dialog box then choose the *Download software and show commercial part number* option. Click OK.



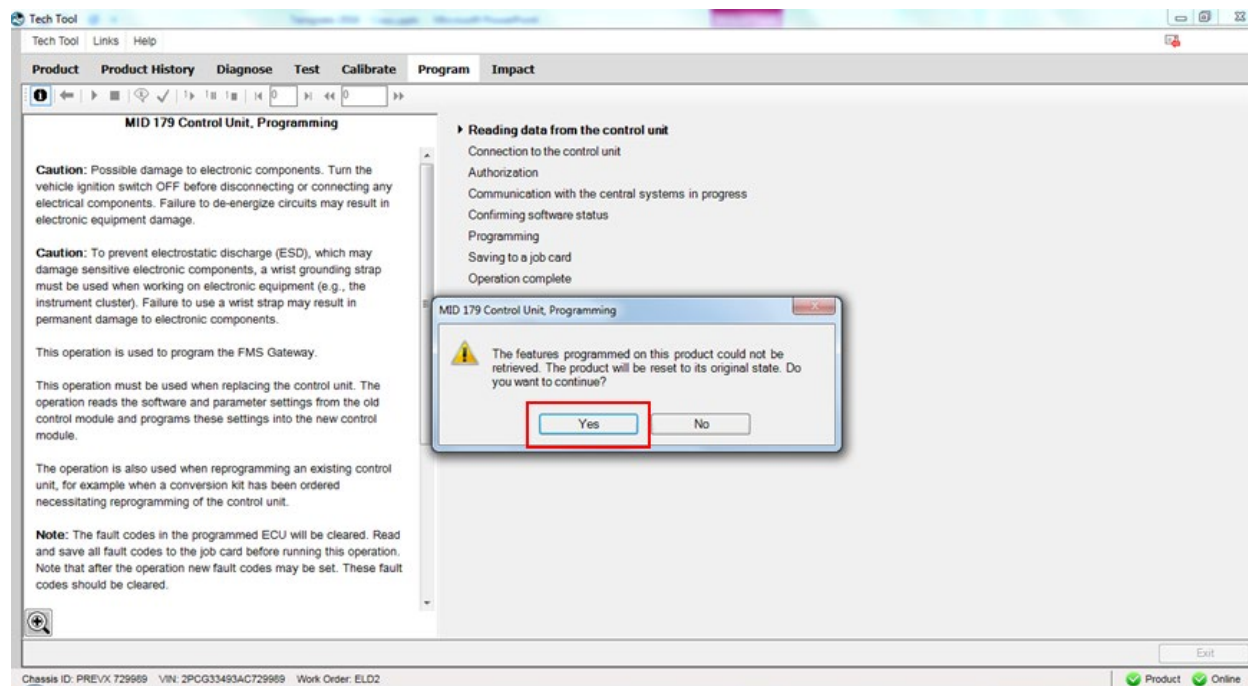
14. Select *Reprogram control unit with complete software package*, then click OK.



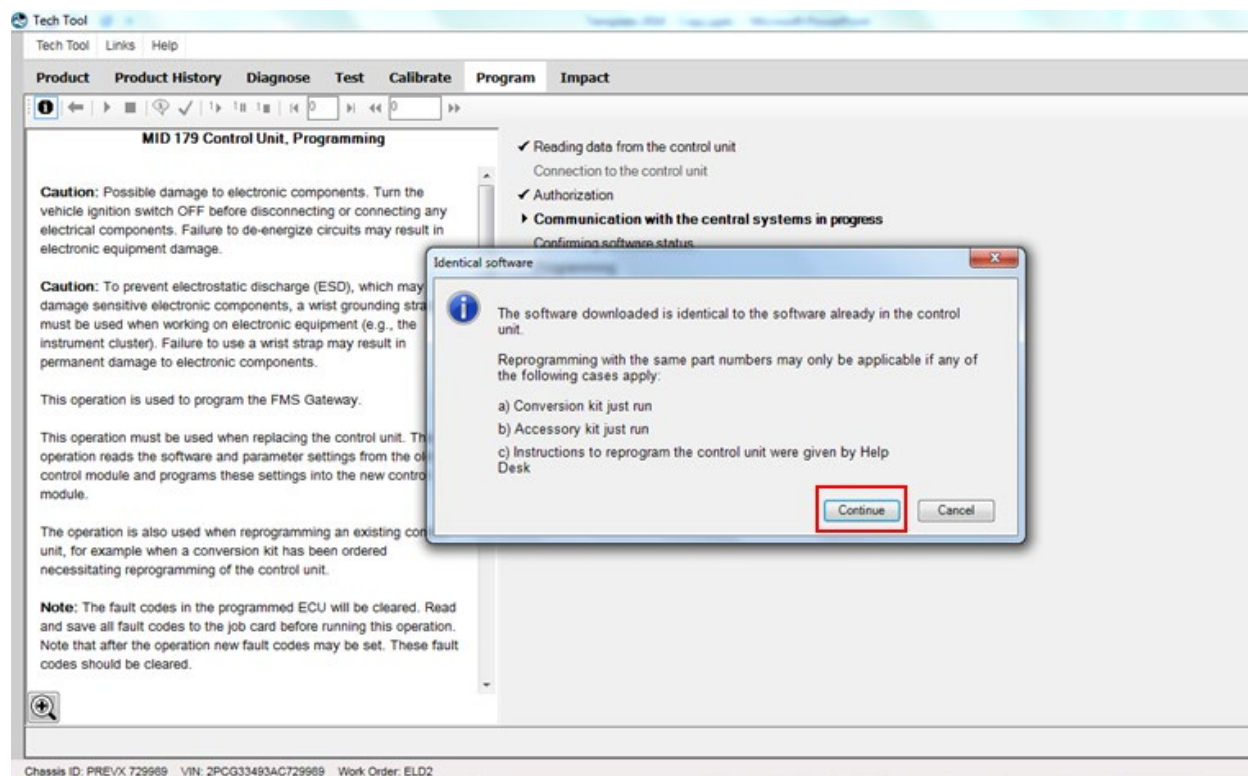
15. Confirm both conditions (engine must be switched off & parking brake applied) to continue.



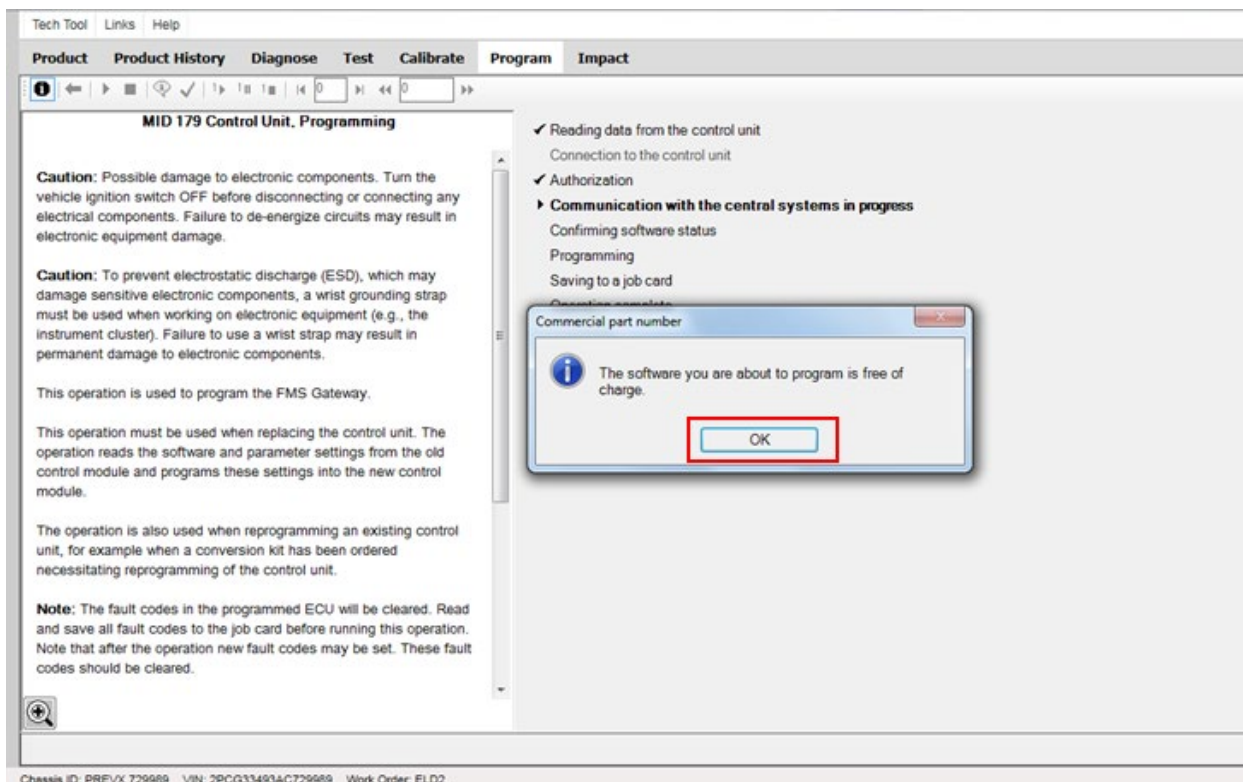
16. Click YES on the product reset warning.



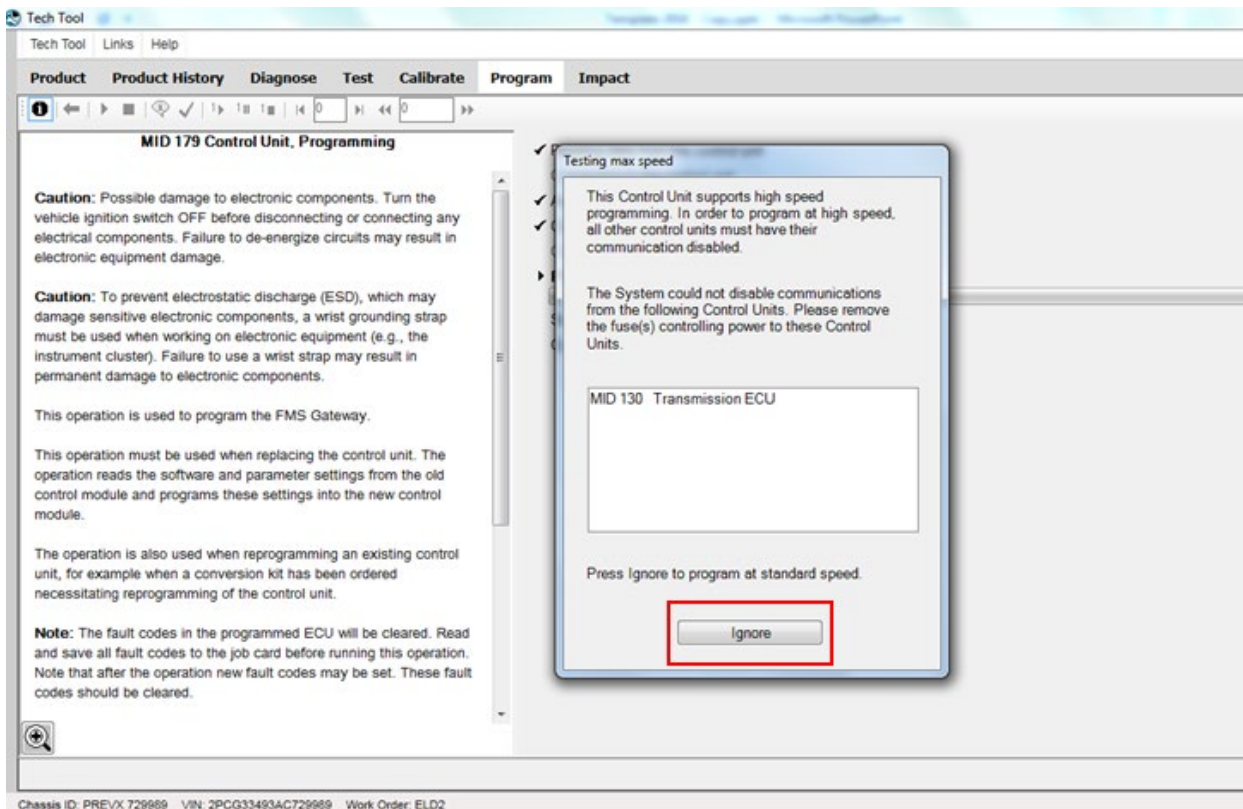
17. Click *Continue* on the identical software information box.



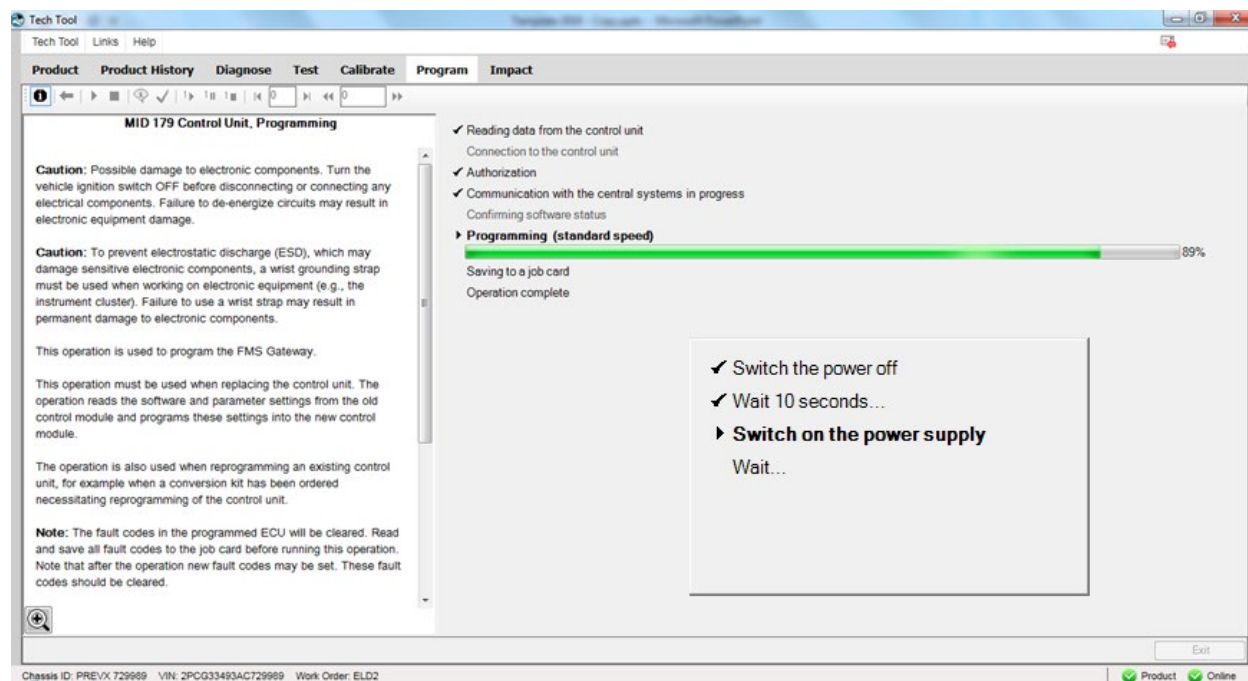
18. Software is free of charge, click OK to continue.



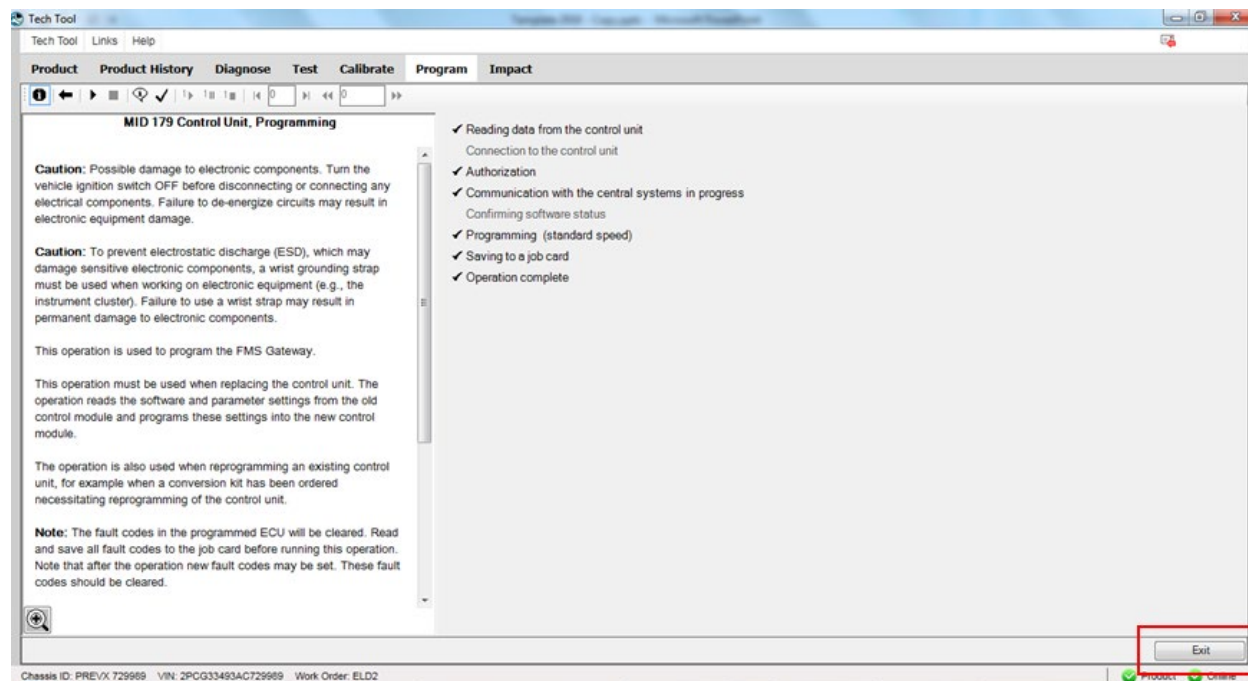
19. Choose IGNORE on the *High Speed Programming* option.

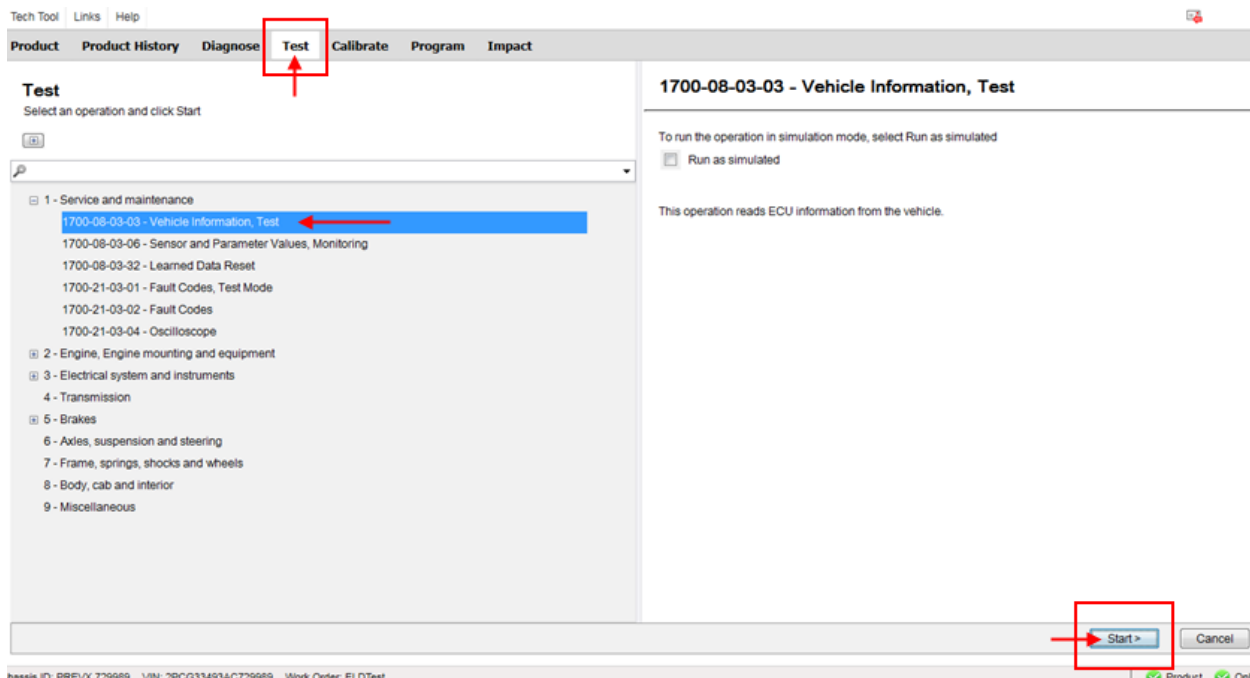


20. When prompted, switch the vehicle power to OFF (ignition switch), wait 10 seconds then switch the power ON again. Wait for the *Standard Speed Programming* to complete.

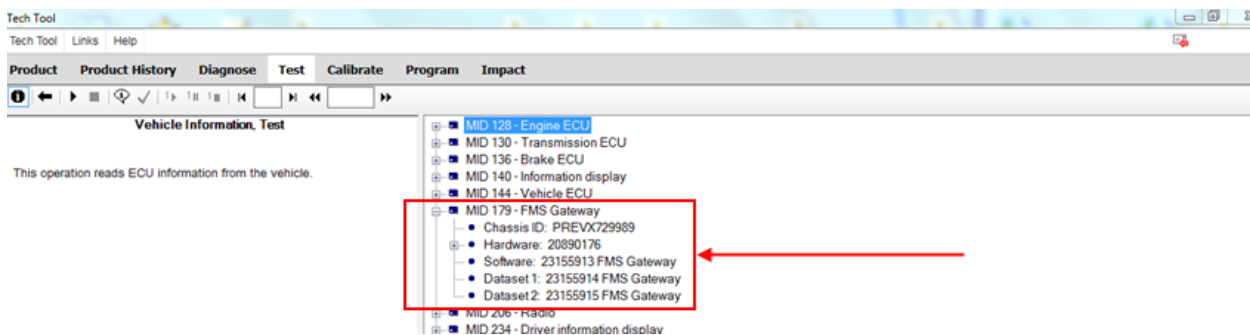


21. Once completed, exit the PROGRAM menu and go back to the TEST menu, expand operation *Service and Maintenance*, select *Vehicle information, Test* and click START.



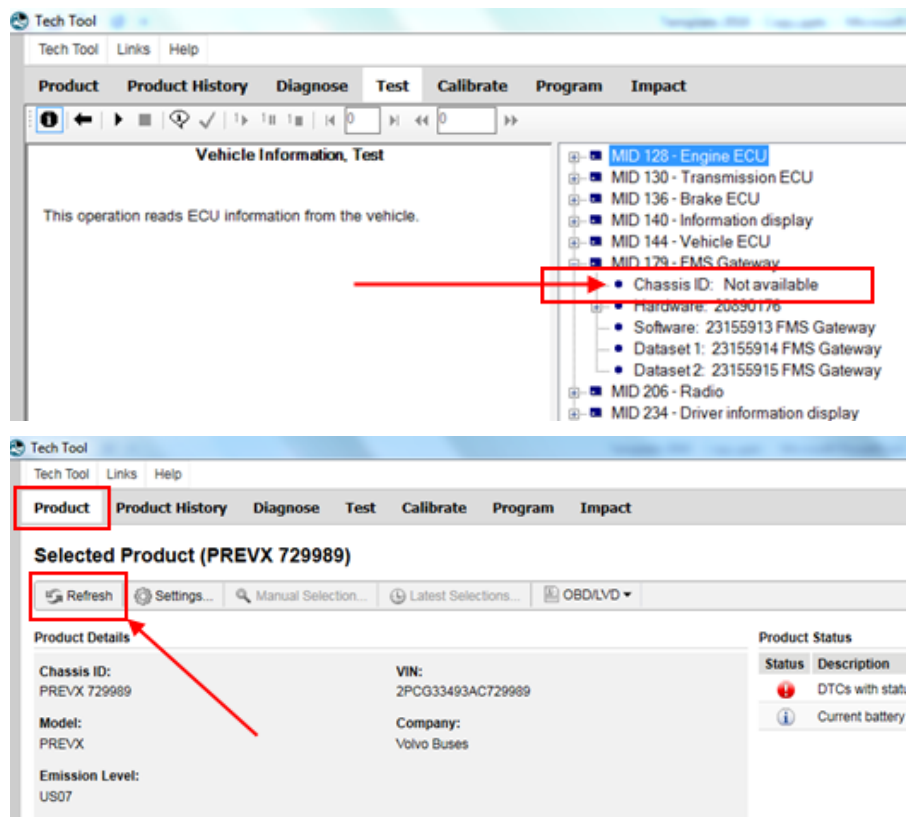


22. Confirm in Vehicle Information Test that MID 179 – FMS Gateway is present and that all related information's are now available.



NOTE

If the Chassis ID is still not available in MID179 – FMS Gateway, go back to the PRODUCT menu and click the REFRESH button.



23. Refresh and delete codes.

PARTS / WASTE DISPOSAL

Discard waste according to applicable environmental regulations (Municipal/State[Prov.]/ Federal)