

DOOR BLOCKING MECHANISM INSTALLATION (XL-40, XL-45 & XL-45E MTH ONLY)

Revision A:

New welding specifications (Figure 4 has been updated).

MATERIAL

Kit #285384 includes:

Part No.	Description	Qty
283874	Hinge	1
282311	Spring	1
502094	Cotter pin	1
500441	Washer	2
507301	Sleeve	1
284214	Socket	1
283872	Attach assembly	1
IS-95100	Instruction sheet	1
FI-95100	Feuille d'instruction	1

PROCEDURE

Warning: Park vehicle safely, apply parking brake, stop engine and set battery master switch(es) to the OFF position prior to working on the vehicle.

- To protect the electronic control components (during soldering) you must take the following precautions:
 - Cut off battery power (battery master switch) from battery compartment.
 - Disconnect wiring harness connectors (3) from ECM (Electronic Control Module). The ECM is mounted on the starter side of the engine.
 - For vehicles equipped with an automatic transmission, disconnect wiring harness connectors (2) from the ECU (Electronic Control Unit). The ECU is located in rear electrical compartment.
 - For vehicles equipped with ABS (Antilock Braking System), disconnect the wiring harness connector from the ABS Electronic Control Unit. The ABS Electronic Control Unit is located in the front service compartment.
 - Do not connect welding cables to electronic control components.
- Remove entrance door from vehicle.
- Cut dashboard panel (Fig. 1) as shown in Figure 2.

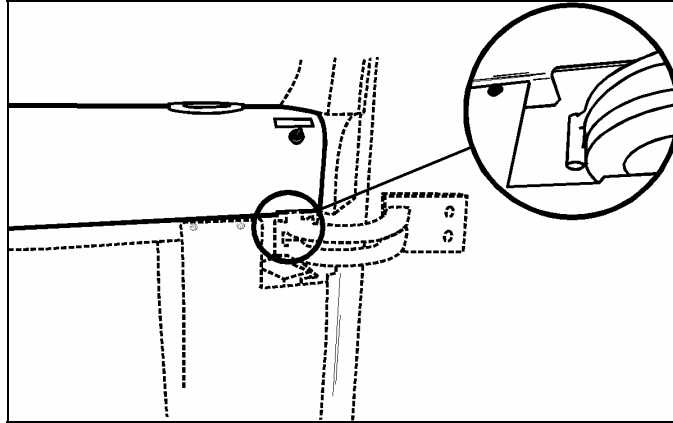


FIGURE 1

18266

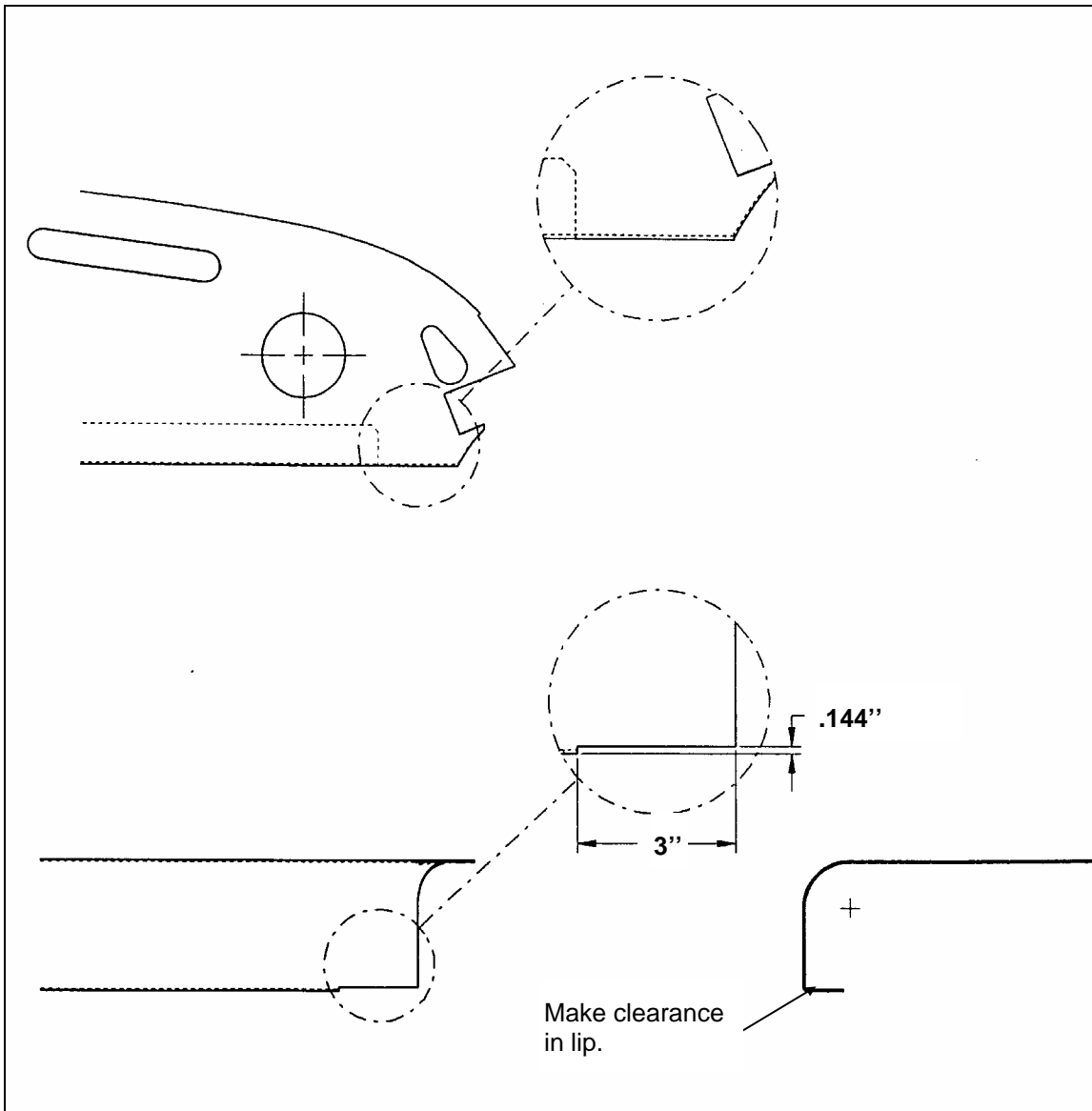


FIGURE 2

18267

Warning: Always wear the appropriate safety equipment during welding. Weld in a clean and well-ventilated area and always have an appropriate fire extinguisher within your reach.

4. Position and weld (use 308L rod) mechanism at location shown in Figures 3 and 4.

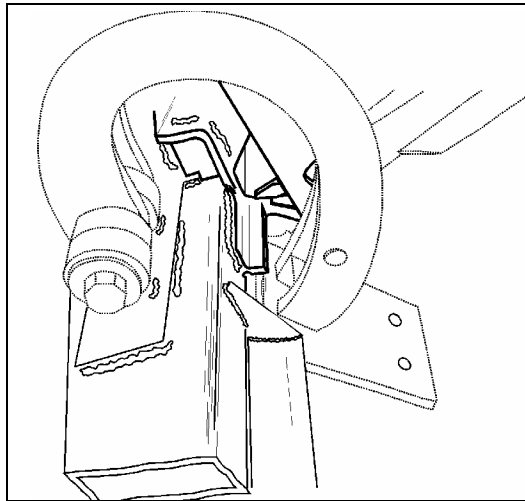


FIGURE 3

18268

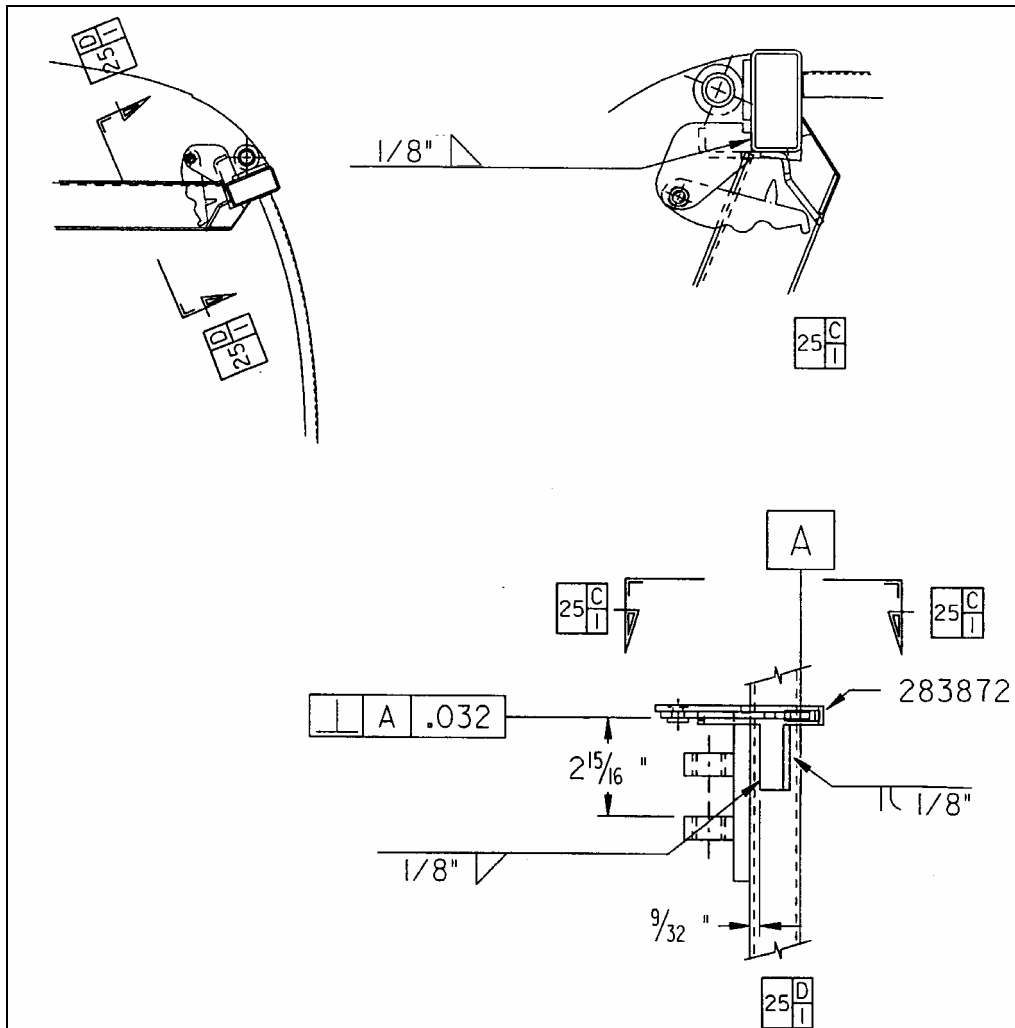


FIGURE 4

18269

5. Remove excess flux with a scaling hammer.

-
6. Install hardware on roller pin as shown in Figure 5.

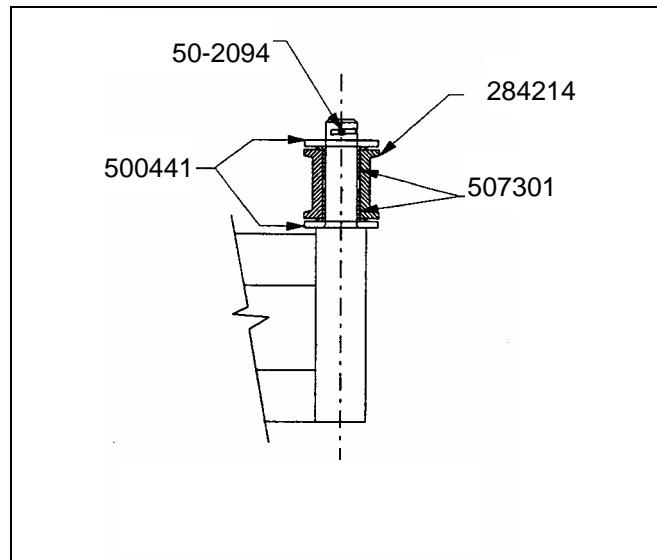


FIGURE 5

18270

7. Install hinge on door.
8. Re-install door on vehicle.
9. Insert spring (Prevost # 282311) as shown in Figure 6.

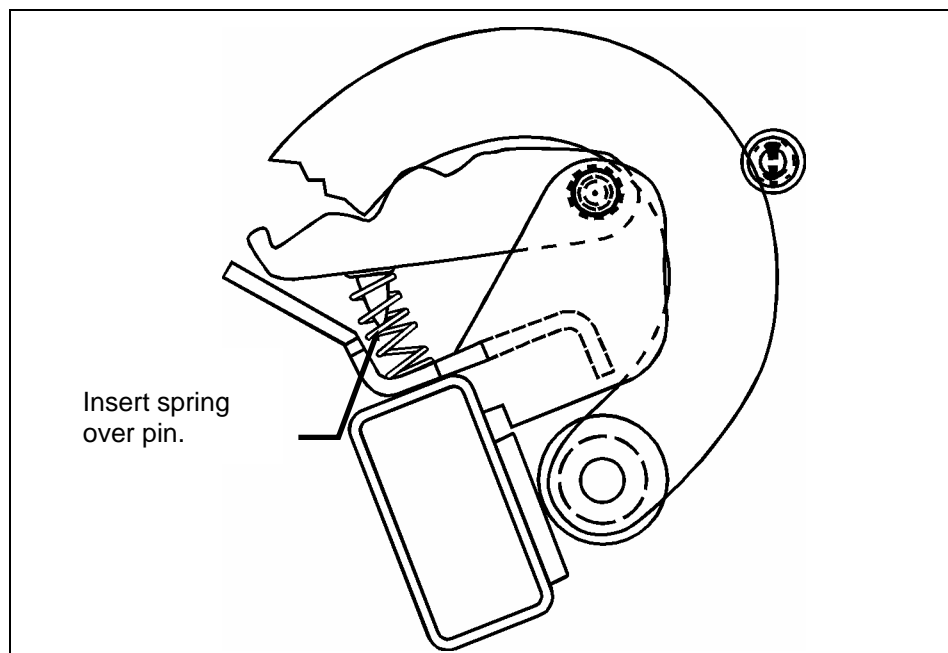


FIGURE 6

18271

10. Bend spring retaining bracket as shown in Figure 7.

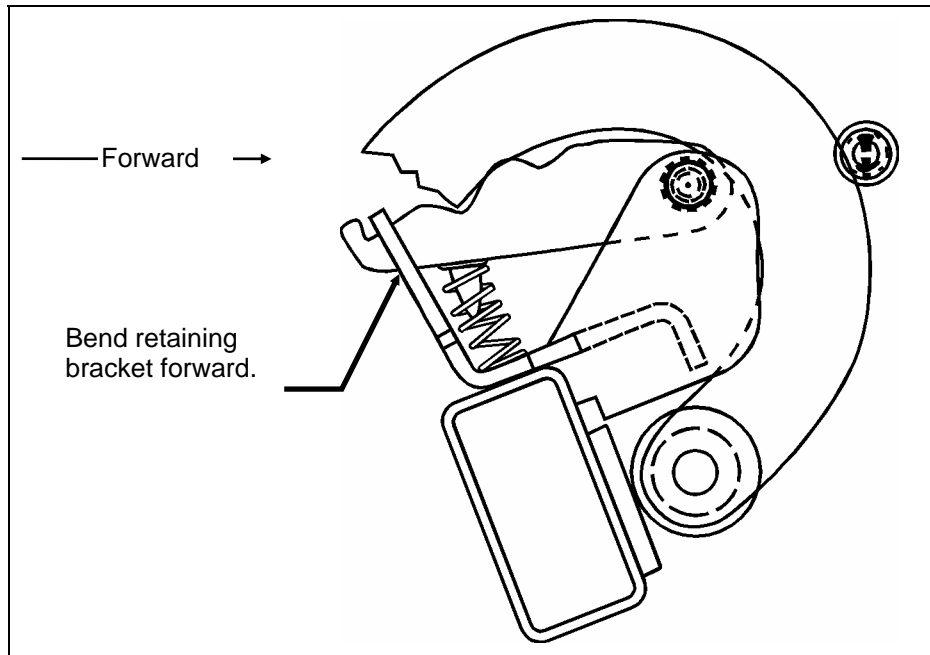


FIGURE 7

8272

11. Adjust door if required (see Maintenance Manual, Section 18).
12. Re-connect modules disconnected at step 1.