



**SAFETY  
RECALL**

**SR23-05**

DATE :	September 2023	SECTION :	23 ACCESSORIES
SUBJECT:	AFSS OPTICAL SENSOR CORROSION		

First Release

09-05-2023

**APPLICATION**

<b>NOTICE TO SERVICE CENTERS</b>	
<i>Verify vehicle eligibility by checking warranty bulletin status with <b>SAP</b> or via <b>ONLINE WARRANTY SYSTEM</b> available on Service / Warranty tab of PrevoSt website.</i>	
Model	VIN
H3-41, H3-45 coaches Model Year: 2018 - 2023	From 2PCH33493 <u>J</u> C71 <u>0086</u> up to 2PCH3349X <u>P</u> C72 <u>1451</u> incl.
H3-45 VIP motorhomes Model Year: 2018 - 2023	From 2PCVS3495 <u>J</u> C71 <u>0113</u> up to 2PCVS3492 <u>P</u> C72 <u>1420</u> incl.
<b>This Safety Recall does not necessarily apply to all the above-mentioned vehicles. Some vehicles may also have been modified before delivery. The owners of the vehicles affected by this recall will be advised by a letter indicating the Vehicle Identification Number (VIN) of each vehicle concerned.</b>	

**DESCRIPTION**

On vehicles affected by this recall, corrosion between the lower automatic fire suppression system (AFSS) optical sensor (in engine compartment) and its bracket could damage the sensor's housing and allow water to ingress, ultimately causing the sensor to malfunction.

Therefore, on the affected vehicles, the lower AFSS optical sensor must be removed from the bracket, inspected for corrosion and replaced as needed. Upon reinstallation, nylon spacers must be inserted between the sensor and the bracket to provide a gap that will eliminate future corrosion problem (caused by road grime and humidity accumulation) at the back of the sensor.

## MATERIAL

Order **kit SR23-05** which contains the following parts:

Part No.	Description	Qty
505045	Nylon Spacer	2

Other parts that may be required:

Part No.	Description	Qty
563457	FIRE SENSOR PM-3M	1

### NOTE

*Material can be obtained through regular channels.*

## SAFETY PRECAUTIONS

- Eye protection should always be worn when working in a shop.
- Rules for Personal Protection Equipment should always be respected. Wear your PPE including but not limited to the following:



**Safety First!**



## PROCEDURE



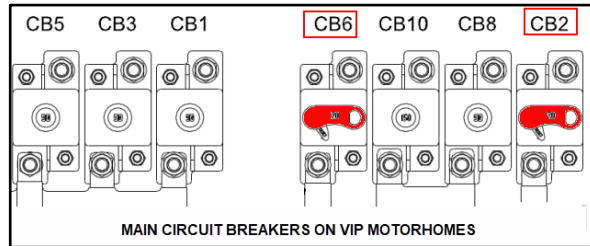
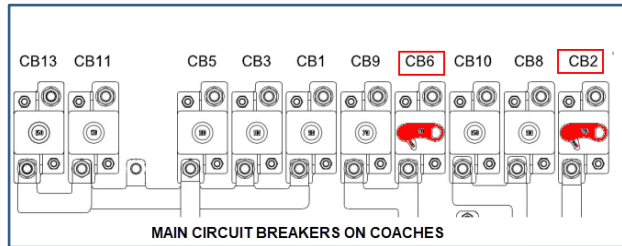
### DANGER

Park vehicle safely, apply parking brake, stop the engine. Prior to working on the vehicle, set the ignition switch to the OFF position and trip the main circuit breakers equipped with a trip button. On Commuter type vehicles, set the battery master switch (master cut-out) to the OFF position.

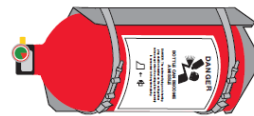
Lockout & Tag out (LOTO) must be performed during set-up, maintenance or repair activities. Refer to your local procedure for detailed information regarding the control of hazardous energy.

1. Cut the vehicle electrical power.

- Trip the CB2 and CB6 resettable breakers (rear junction box).



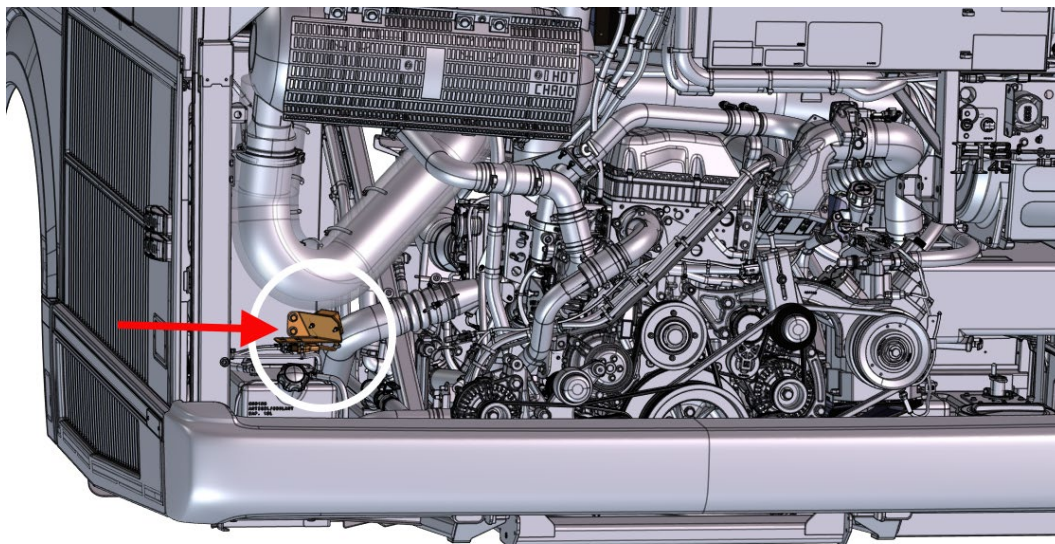
- Disconnect the vehicle AFSS extinguisher.



- Make sure that the AFSS control panel in the driver's area is off and not showing any lights.



2. Locate the lower AFSS optical sensor in the engine compartment (recent H3 model shown).

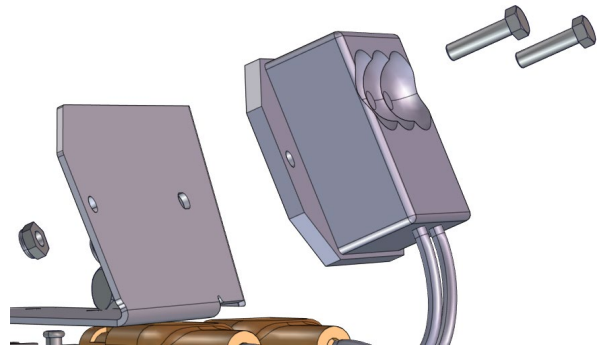


**NOTE :** On older models, the sensor is located on the same side but lower near the bumper curve.



3. Remove the sensor from the support bracket.

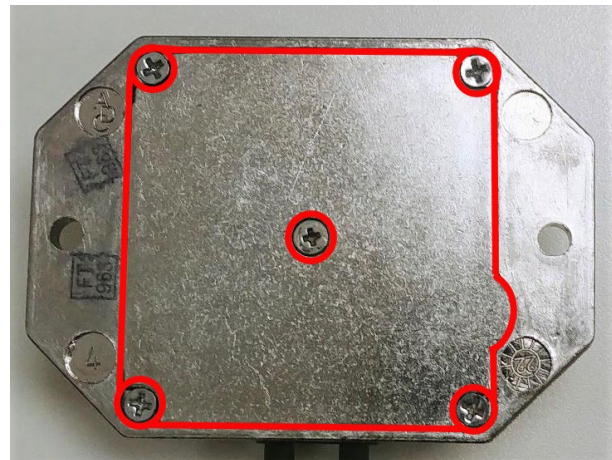
- Remove screws and nuts
- Do not discard hardware



4. Inspect the backside of the sensor looking for sign of corrosion at the cover seam.

**\*\*\* USE THE SENSOR REPLACEMENT GUIDE AT THE END OF THIS PROCEDURE TO HELP BAD SENSOR IDENTIFICATION \*\*\***

- Look for excess of aluminum oxide, a white (sometimes greenish) dusty looking material.
- If aluminum oxide is found and it is touching the seam of the backside cover, the sensor must be replaced.
- Superficial black spots (small crater) are ok unless they create a noticeably deep crevice at the seam area.



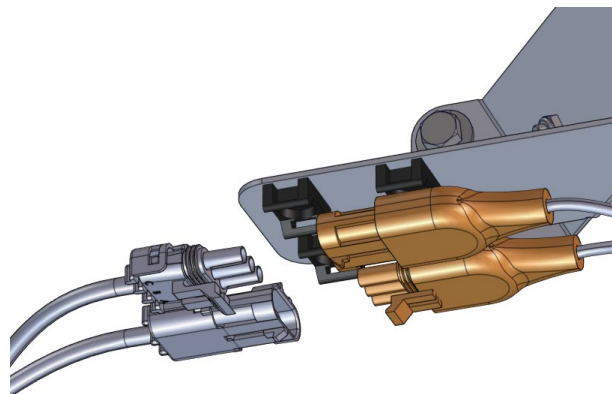
**AREA OF THE SENSOR BACKSIDE THAT MUST BE FREE OF CORROSION (WHITE ALUMINUM OXIDE POWDER)**

5. If the sensor is corroded, it must be replaced. Unplug the sensor two connectors under the bracket.

- Remove all cable ties.
- Unplug the connectors.

**\*\*\* DO NOT DISCARD THE OLD SENSOR\*\*\***

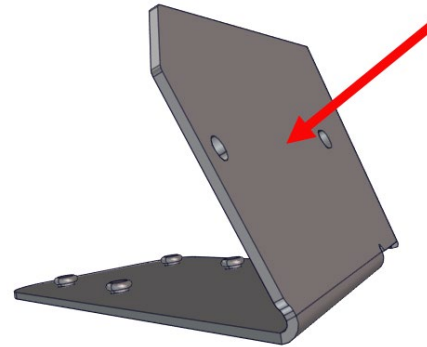
- Return the sensor for warranty.



6. Clean the bracket mounting surface.

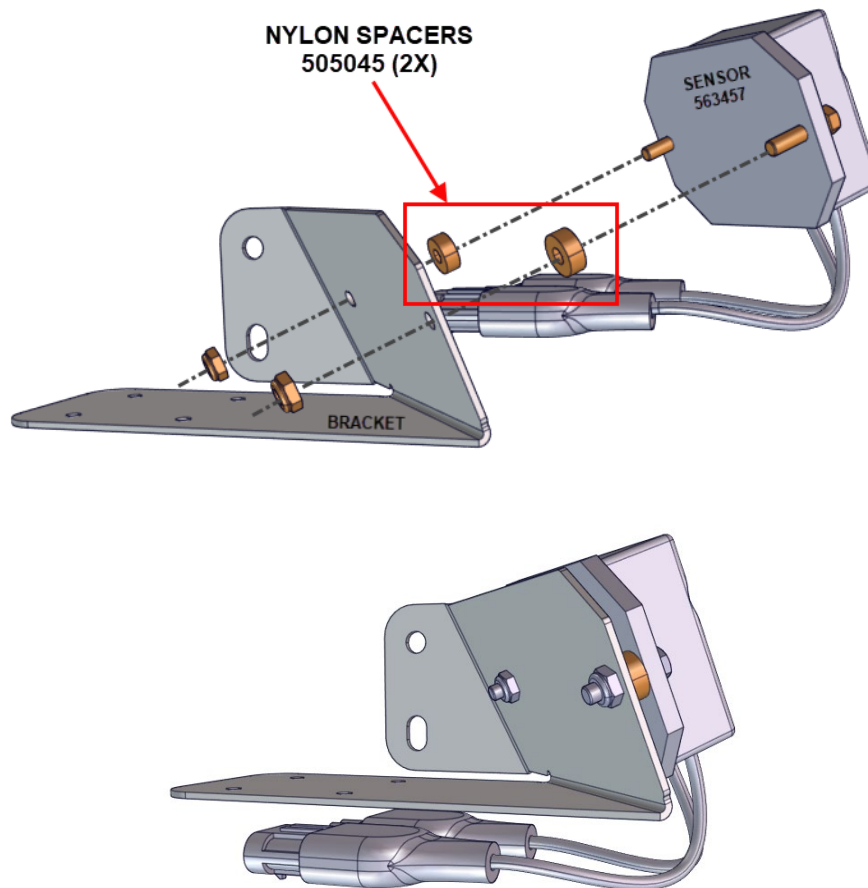
- Use cleaner/degreaser on a clean shop rag and scrub the bracket surface to remove road grime and oxidation.
- If the old sensor is going to be reinstalled, also clean the backside of the sensor.

**NOTE** : do not clean the front optical part of the sensor with strong degreaser or petroleum products.

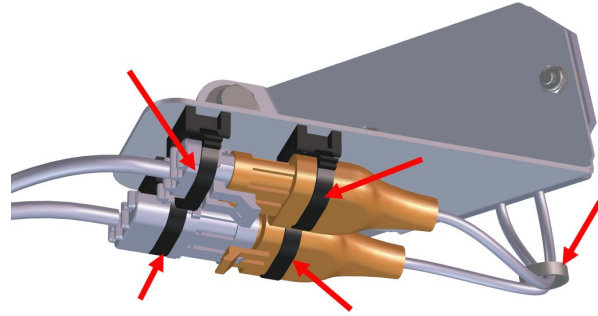


7. Reinstall (or install a new sensor, as required) the sensor on the bracket adding the supplied **505045** nylon spacers between the sensor and the bracket.

- Reuse mounting hardware (screws and nyloc nuts).



8. With new sensor, reconnect and secure the two connectors with cable ties under the bracket.



9. Check for proper AFSS function.

- Reconnect the AFSS extinguisher.
- Reset the CB2 and CB6 circuit breakers.
- Start the vehicle.
- Make sure that the AFSS control panel in the driver's area is showing a constant green light.



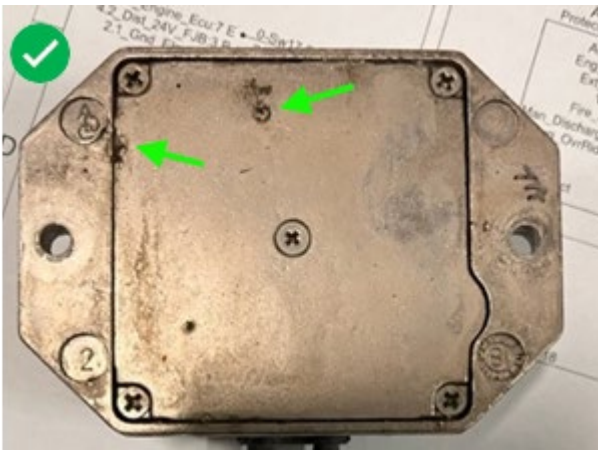
## PARTS DISPOSITION

All replaced parts must be returned to Prevost according to the Return Shipping Instructions available on [www.prevostcar.com](http://www.prevostcar.com) (under service / warranty section) for full reimbursement. A copy of the warranty claim form must be enclosed with the shipment.

Discard waste according to applicable environmental regulations (Municipal/State[Prov.]/ Federal)



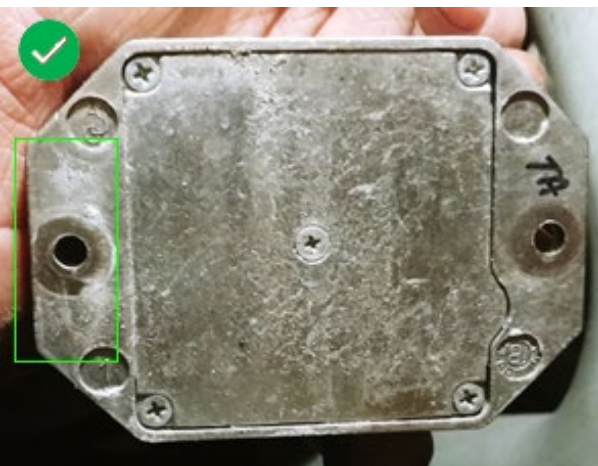
## SENSOR REPLACEMENT GUIDE



**SUPERFICIAL BLACK SPOTS ARE OK - CLEAN & REINSTALL**



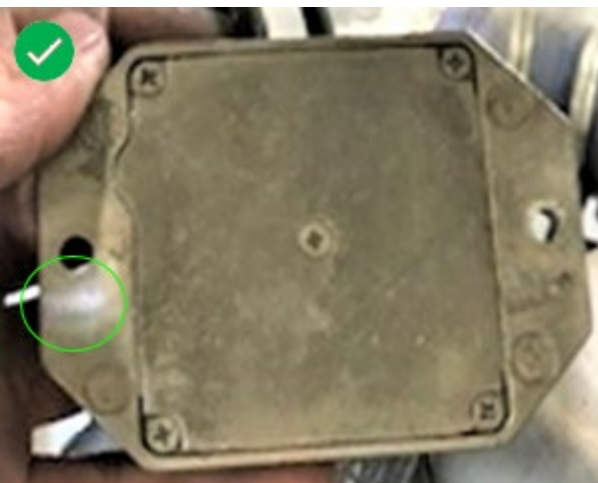
**WHITE CORROSION AT ONE EDGE - REPLACE**



**WHITE SPOT FORMING BUT NOT TOUCHING THE COVER SEAM - CLEAN & REINSTALL**



**WHITE CORROSION ALL AROUND THE COVER - REPLACE**



**SENSOR COVER DIRTY AND ROUGH BUT SMALL WHITE SPOT NOT TOUCHING THE EDGE - CLEAN & REINSTALL**



**BACK SIDE COVERED BY CORROSION - REPLACE**

## WARRANTY

This modification is covered by Prevost's normal warranty. We will reimburse you the parts and 1/2 hour (0.5) of labor upon receipt of the defective part and a completed A.F.A. Please submit claim via our Online Warranty System, available at [www.prevostcar.com](http://www.prevostcar.com) (under service \ warranty section). Use Claim Type: "Bulletin/Recall" and select "Safety Recall 0BSR23-05".

Should you only wish to close the safety recall (without reimbursement), fill-in the "Safety Recall Certification Sheet" provided with this bulletin and return it to our warranty department by Email at [prevost.onlinewarranty@volvo.com](mailto:prevost.onlinewarranty@volvo.com) or by fax at 418-831-9301.

## OTHER

VBC Bulletin	N/A
Fail Code	23.15
Defect Code	09
Syst.Cond	R
Causal Part	563457

Access all our Service Bulletins on <http://techpub.prevostcar.com/en/> or scan the QR-Code with your smart phone.  
E-mail us at [technicalpublications\\_prev@volvo.com](mailto:technicalpublications_prev@volvo.com) and type "ADD" in the subject to receive our warranty bulletins by e-mail.





**Safety Recall  
Certification Sheet  
(Ref: SR23-05 )**



**VEHICLE SERIAL NUMBER:**

--	--	--	--	--	--	--	--	--	--	--	--	--	--	--	--	--	--	--	--

PERFORMED BY		OWNER/OPERATOR	
We hereby certify that Safety Recall Instructions with regard to Safety Recall SR23-05 have been performed.			
Name: _____		Name: _____	
Addr: _____		Addr: _____	
Phone: _____		Phone: _____	
Fax: _____		Fax: _____	
Signature : _____	_____	Signature : _____	_____
Date: _____	_____	Date: _____	_____

**If the information mentioned above is incorrect or you are not the owner of this vehicle anymore, please fill this section and return to sender.**

**NEW OWNER:** \_\_\_\_\_

**BUSINESS:** \_\_\_\_\_

**ADDRESS (including County):** \_\_\_\_\_

\_\_\_\_\_

---

---

**TELEPHONE:** \_\_\_\_\_ **FAX:** \_\_\_\_\_

**Please return this completed document with your A.F.A. form**