


# PREVOST

## Warranty Bulletin

96-21

Date: **October 1996**  
 Section: **06**  
 Subject: **BATTERY AND ENGINE COMPARTMENTS GROUND STUDS**  
 Application:

Model	VIN
H3-41 Model Year: 1997	 2PCH33418V1011658 2PCH33414V1011656 2PCH33415V1011651 2PCH33414V1011639 2PCH33412V1011638
H3-45 Model Year: 1997	From 2PCH3349XV1011635 up to 2PCH33492V1011645 and 2PCH33496V1011647, 2PCH33498V1011648 2PCH3349XV1011652, 2PCH33490V1011661
VIP-45 Model Year: 1997	2PCV3349XV1011637

### DESCRIPTION

On the above-mentioned vehicles, ground studs in the engine and battery compartments may have to be replaced to ensure that the electrical system operates within required specifications. **Note that this is a SAFETY RECALL CAMPAIGN.**

### MATERIAL

Part No.	Description	Qty
38-0360	Ground studs	2
68-2175	Gravel guard	1

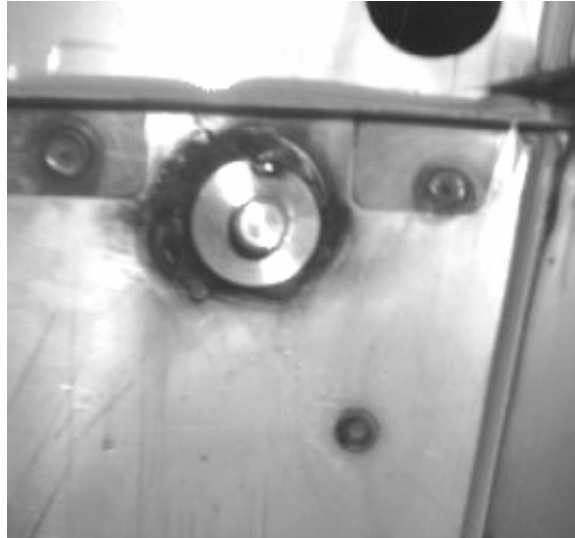
**Note:** Material can be obtained through regular channels.

### PROCEDURE

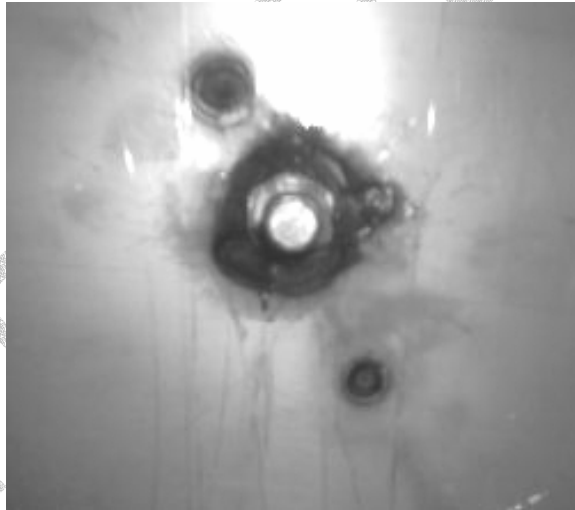
**Warning:** Park vehicle safely, apply parking brakes, stop engine and set the battery master switches to the OFF position prior to working on vehicle.

### Section A: Engine compartment ground stud

1. Open right engine compartment door.
2. Locate ground stud (Fig. 1).
3. Make sure ground stud is a Prevost #380360 as shown in Figure 1.



**FIGURE 1: APPROVED STUD (PREVOST #38-0360)** 06193



**FIGURE 2: NOT APPROVED** 06194

4. If stud is of the type shown in Fig. 2, install new stud (Prevost #380360) as follows:
  - a. To protect the electronic control components you must take the following precautions:
    - Cut off battery power (battery master switch) from battery compartment.
    - Disconnect wiring harness connectors (3) from ECM (Electronic Control Module). The ECM is mounted on the starter side of the engine.
    - For vehicles equipped with an automatic transmission, disconnect wiring harness connectors (2) from the ECU (Electronic Control Unit). The ECU is located in rear electrical compartment.
    - For vehicles equipped with ABS (Antilock Braking System), disconnect the wiring harness connector from the ABS Electronic Control Unit. The ABS Electronic Control Unit is located in the front service compartment.
    - Do not connect welding cables to electronic control components.

- 
- b. Remove cables from stud.
  - c. Completely remove stud with a portable grinding wheel.

**Warning:** Always wear safety goggles during grinding operations.

- d. Position new stud in same position.
- e. Weld new stud with a 308L welding rod. Weld all around stud head for the best possible electrical conductivity.

**Warning:** Always wear the appropriate safety equipment during welding. Weld in a clean and well-ventilated area and always have an appropriate fire extinguisher within your reach.

- f. With a scaling hammer, remove flux from soldered joint.
- g. Apply a coat of gravel guard (Prevost #68-2175) on welded joint and any structure surface exposed from buffing.
- h. Reinstall cables and torque nut at 30-35 lb•ft (40-47 N•m).
- i. Reconnect control modules disconnected in step a.

## WARRANTY "A"

This modification is covered by the manufacturer's normal warranty. We will reimburse you for parts and 0,75 hours of labor upon receipt a completed A.F.A. form on which you must specify as per "Warranty Bulletin 96-21, warranty A". **You have to fill the safety recall notification card provided with this bulletin and return it with your A.F.A. form to be reimbursed.**

**Expiration date: September 1997**

## Section B: Battery compartment ground stud

1. Open battery compartment.
2. Locate battery compartment ground stud and determine if it is approved (Fig. 1) or not approved (Fig. 2).
3. If stud is as shown in Figure 1, ignore the rest of this bulletin.
4. If stud is as shown in Figure 2, disconnect and remove all batteries from vehicle as follows:

**Warning:** DO NOT tip battery by more than 45° when carrying or installing the battery.

**Warning:** All lead-acid batteries generate hydrogen gas which is highly flammable. If ignited by a spark or flame, the gas may explode violently, causing spraying of acid, fragmentation of the battery, and result in possible severe personal injuries. Wear safety glasses when working near batteries. In case of contact with acid, flush immediately with water.

- a. Remove the two screws at the bottom of the plastic protective cover. Unscrew the two quarter-turn nuts to remove the protective cover.
- b. Remove supports. Unscrew all battery terminal nuts.

**Note:** Battery main relays should be in the "Off" position before disconnecting cables from batteries.

- c. Remove battery cables from batteries.

**Note:** When battery cables have been removed, wrap the battery terminals and cable ends with electric tape to prevent accidental grounding. The ground cables should always be disconnected first and connected last.

---

d. Remove batteries.

e. To protect the electronic control components you must take the following precautions:

- Cut off battery power (battery master switch) from battery compartment.
- Disconnect wiring harness connectors (3) from ECM (Electronic Control Module). The ECM is mounted on the starter side of the engine.
- For vehicles equipped with an automatic transmission, disconnect wiring harness connectors (2) from the ECU (Electronic Control Unit). The ECU is located in rear electrical compartment.
- For vehicles equipped with ABS (Antilock Braking System), disconnect the wiring harness connector from the ABS Electronic Control Unit. The ABS Electronic Control Unit is located in the front service compartment.
- Do not connect welding cables to electronic control components.

5. With a portable grinding wheel, completely remove stud from structure without damaging metal sheet.

**Warning:** Always wear safety goggles during grinding operations.

6. Position new stud (Prevost #380360) in the center of the hole, and weld the stud (all around head) to the structure member with a 308L rod. Make sure the metal sheet is also welded in the process to produce an hermetic joint.

**Warning:** Always wear the appropriate safety equipment during welding. Weld in a clean and well-ventilated area and always have an appropriate fire extinguisher within your reach.

7. Do not apply gravel guard.

8. Reinstall batteries.

**Warning:** To prevent possible electric shocks or sparking, the battery main relays must be set to the "Off" position before tightening an electrical connection.

**Caution:** Ensure that connections are not reversed when reinstalling batteries, since damage to electrical system components will result.

**Notes:** When reinstalling batteries, battery connections must be torqued to 10-15 ft•lbs (13-20 N•m) and the nut on top of sliding tray to 45-55 in•lbs (5-6 N•m). A torque wrench is required to ensure an accurate tightening torque.

A protective coating should be applied on all terminals that have been disconnected, and this coating should not contain silicone. We recommend the use of Cortec VCI-238 (Prevost part #68-2460) on all electrical connections.

9. Reconnect control modules disconnected in step 4e.

## WARRANTY "B"

This modification is covered by the manufacturer's normal warranty. We will reimburse you for parts and 2,0 hours of labor upon receipt a completed A.F.A. form on which you must specify as per "Warranty Bulletin 96-21, warranty B". **You have to fill the safety recall notification card provided with this bulletin and return it with your A.F.A. form to be reimbursed.**

**Expiration date: September 1997**

# PREVOST

## Safety Recall Certification Sheet

We hereby certify that Safety Recall Instructions with regards to Warranty Bulletin # 96-21 have been performed on vehicle serial number:

2 P \_\_\_\_\_ ( Please complete )

Company name			
Mailing address			
Phone		Fax	
Signature:			
Date			
A.F.A. #			

**Please return this completed document with your A.F.A. form.**