

PREVOST

Instruction Sheet

IS-02086

ADDITION OF A FRESH AIR INLET ON XL2 COACHES WINDSHIELD DEFROSTER

MATERIAL

Kit #373998 includes the following parts:

Part No.	Description	Qty
065837	Cable Harness, Air Inlet	1
172780	Support	1
287284	Cable, Front Bumper Retaining	1
561707	Relay, 24V with diode	1
561790	Circuit Breaker, 6A	1
561813	Bar, Bus	1
215126	Fitting, "Z" Shape Attachment	2
373990	Shroud, Air	1
373984	Flange, Mounting	1
504324	Clamp, Hose	1
373415	Actuator, Thermal	1
373993	Hose, Flexible 5 inch dia. 1600 mm	1
504104	Rivet, Pop SS Domed Head, Open End	2
374021	Tube, Plastic Black	1
504379	Rivet, Pop SS Domed Head, Open End	9
IS-02086	Instruction Sheet	1
FI-02086	Feuille d'instructions	1

PROCEDURE

Warning: Park vehicle safely, apply parking brake, stop engine and set battery master switch(es) to the OFF position prior to working on the vehicle.

MECHANICAL PART

1. Open front service compartment door. Cut out floor sheet, apply sealant and fix in place shroud (373990) using rivets. Fix deflector "Z" shape attachment fittings (215126) using rivets (refer to figure 1).

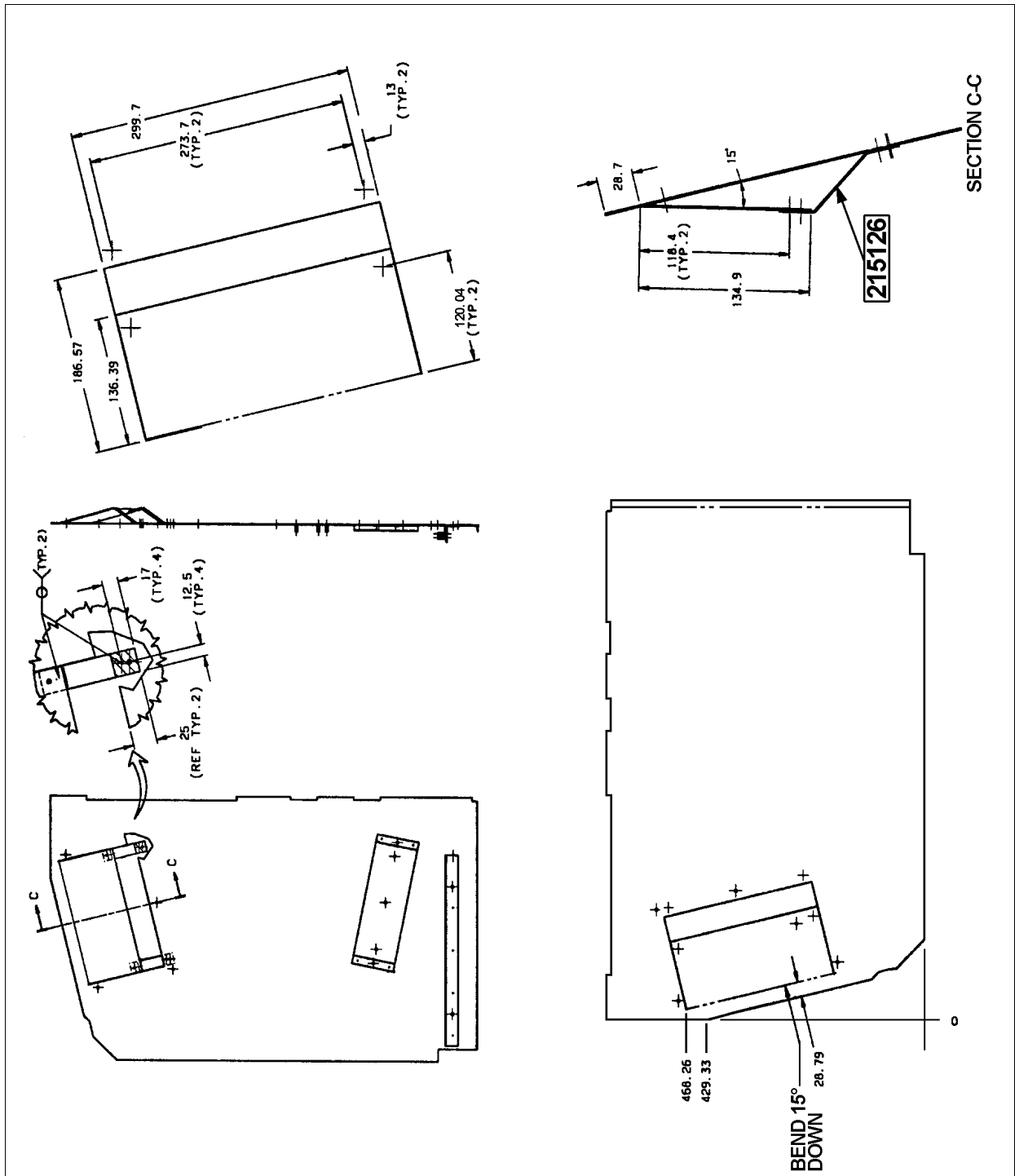


FIGURE 1

2. Install flexible hose (373993) onto shroud (373990).
3. First remove defroster air filter to avoid damages. Cut air inlet opening onto defroster.

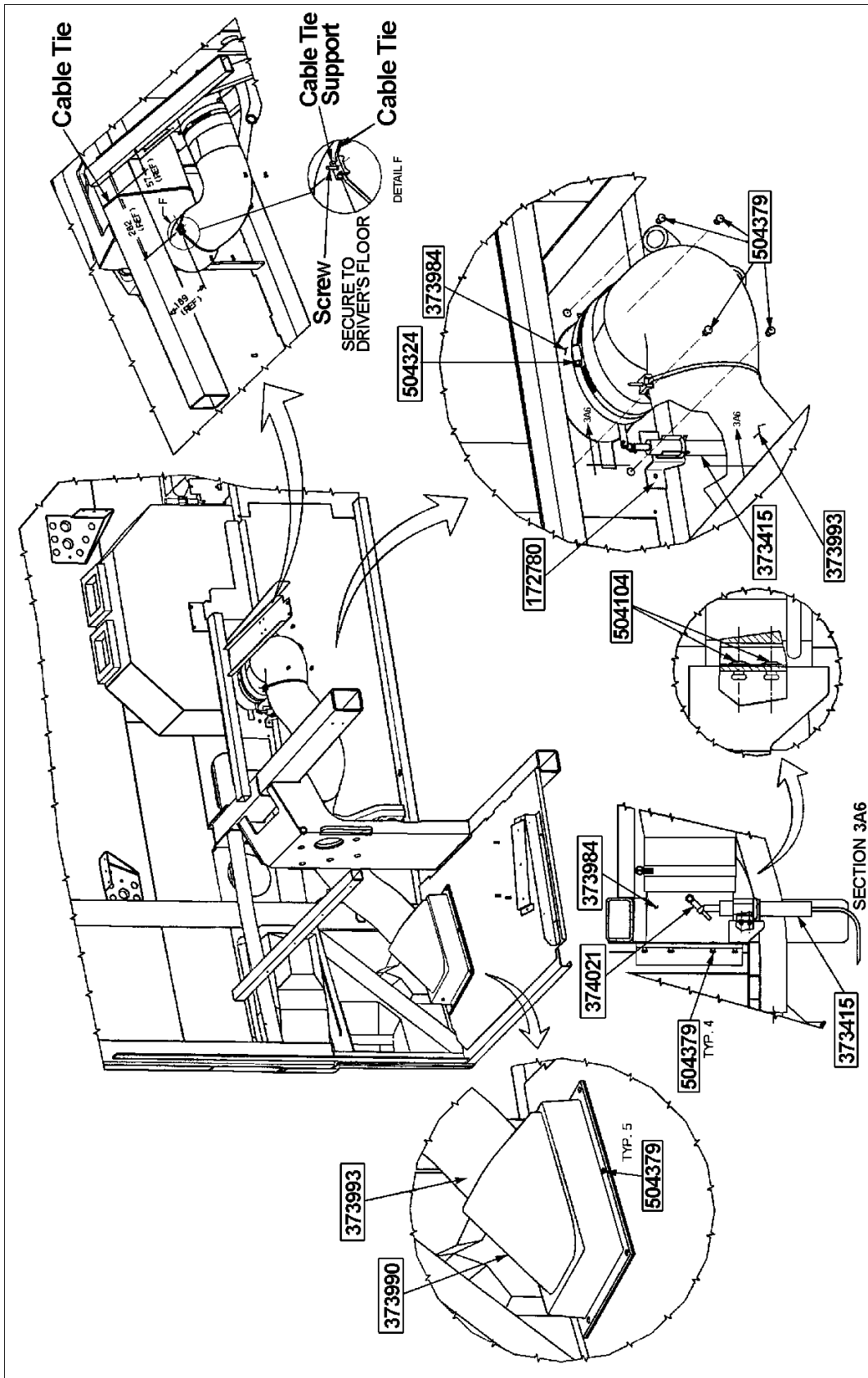


FIGURE 2

4. Install mounting flange (373984) with flap onto the defroster then secure flexible hose onto the mounting flange.
5. Install the support (172780), fix the thermal actuator (373415) onto the support then install the plastic tube on the actuator arm.
6. If front bumper is equipped with a hinge, replace last with the supplied retaining cable (287284).

ELECTRICAL PART

(Refer to figures 3, 4, 5 and 6)

1. Route C108 of cable harness (065837) as far as the damper cylinder.
2. Crimp or solder wire 65D of cable harness (065837) with wire 65D of connector C11 pos. 17.
3. Unfasten circuit breakers fixing screw. Move the last two circuit breakers to be able to insert 6A circuit breaker (561790) and bus bar (561813).
4. Connect wire 65F of cable harness (065837) to circuit breaker CB93.
5. Connect ground wire 0C to terminal 0C.
6. Fix base of relay R85 then install 24V relay equipped with a diode (561707) as per figure 4.

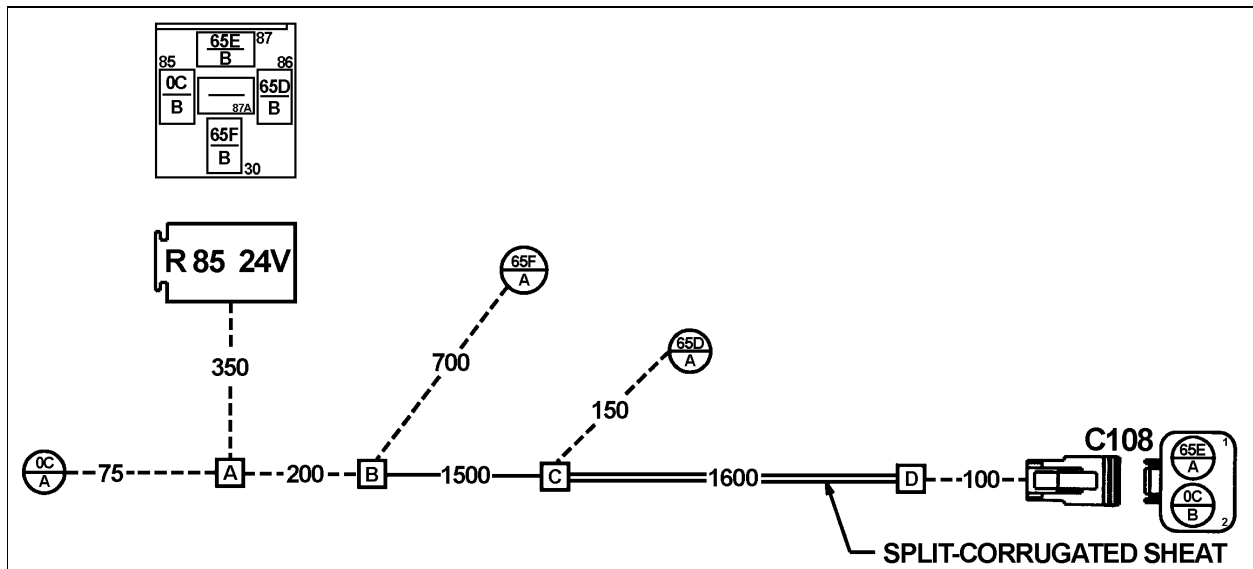


FIGURE 3

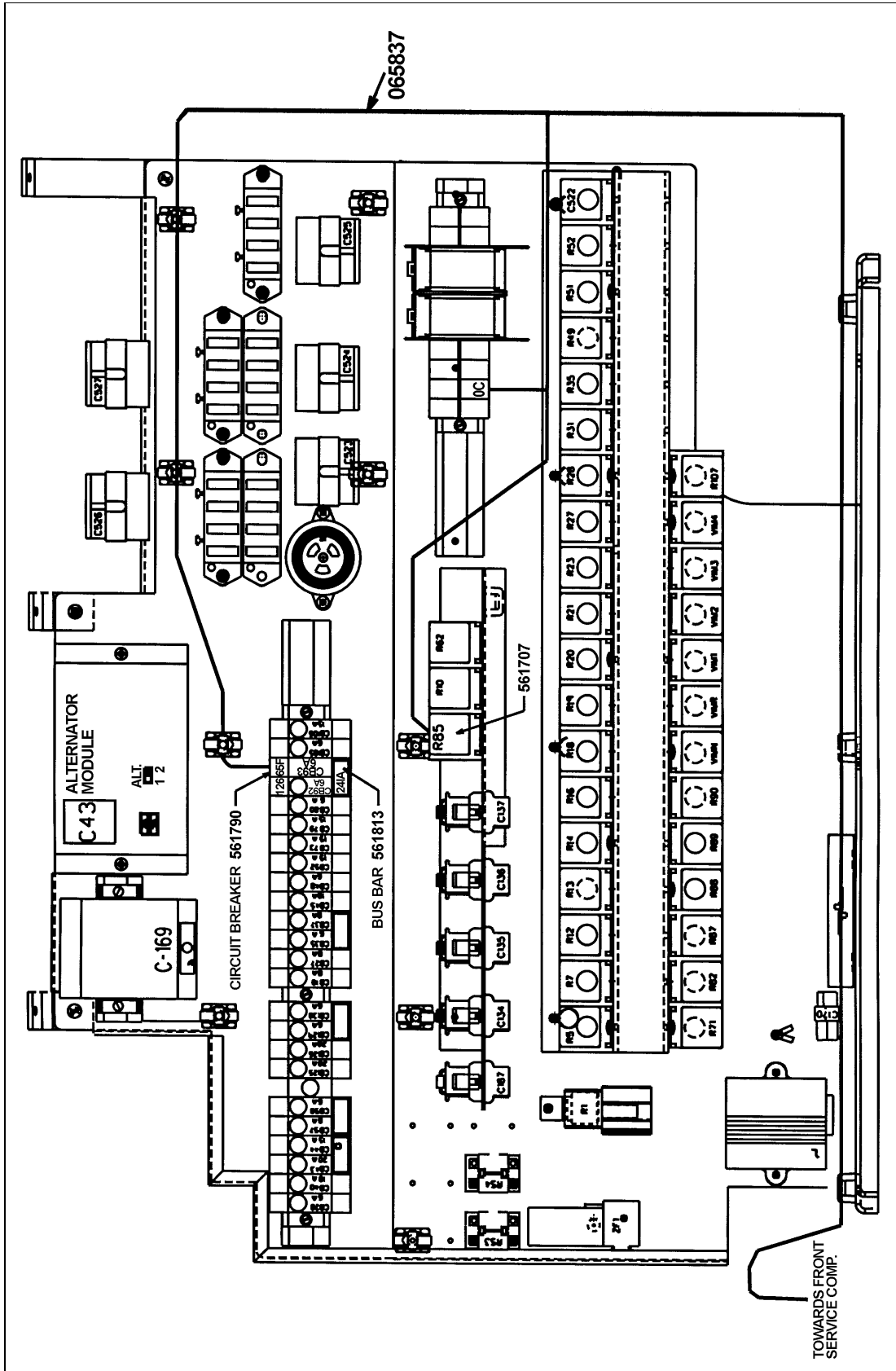


FIGURE 4

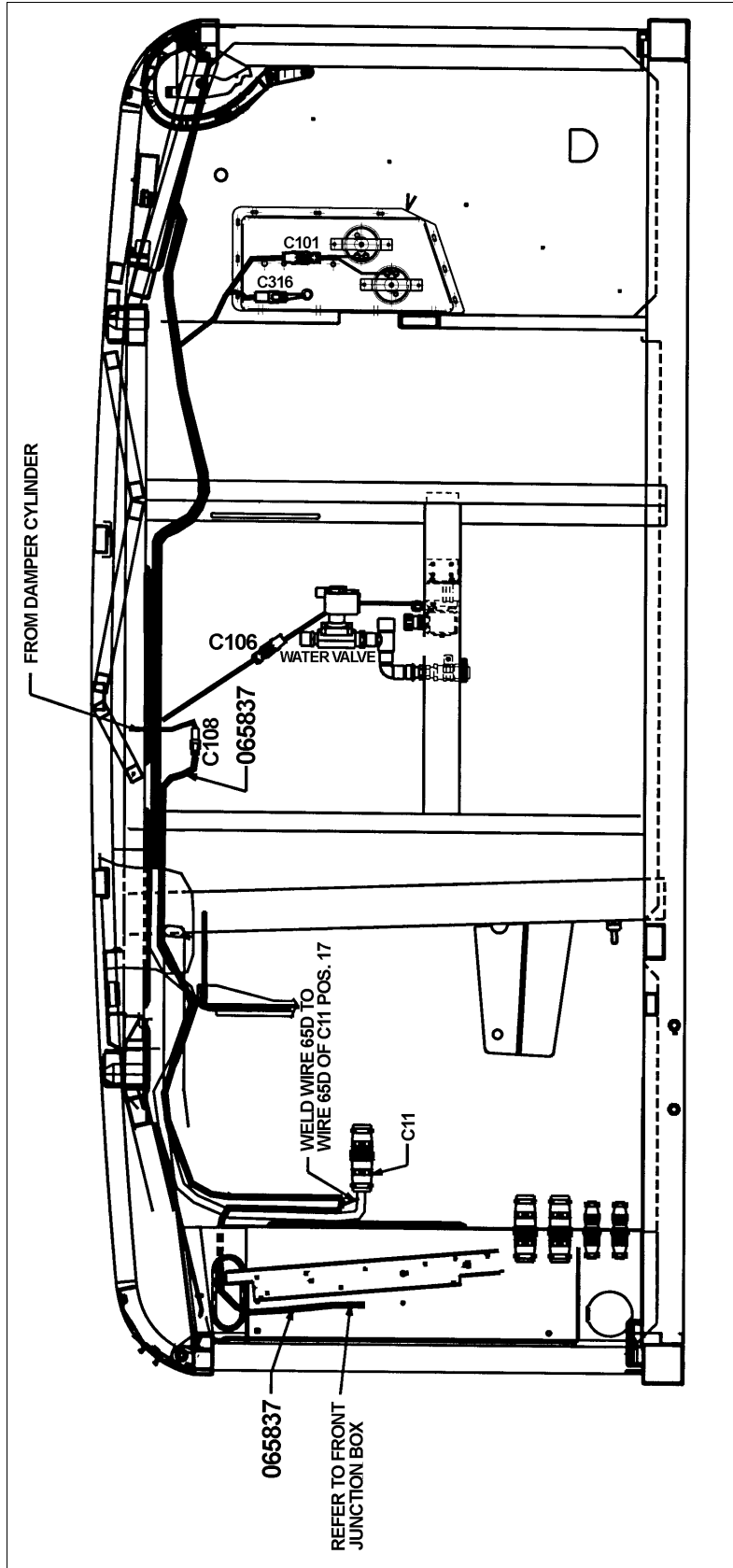


FIGURE 5: TOP VIEW

