

PREVOST

ENREGISTRÉ - REGISTERED
ISO 9001 & ISO 14001


**WARRANTY
BULLETIN**

Wb03-18



DATE : NOVEMBER 2003	SECTION :	12 - Brakes
EXPIRATION: NOVEMBER 2005		
SUBJECT : REPLACING THE BRAKE CHAMBERS		

APPLICATION

Model	VIN	
VIP-45 Model Year: 2004	2PCV3349541014641	
H3-45 Coaches Model Year: 2004	2PCH3349541014765	
XLII MTH Model Year: 2004	2PCW3349841028084, 2PCW3349141028167, 2PCW3349341028168 2PCY3349841028174, 2PCY3349141028176 2PCW3349841028182, 2PCY3349941028183	
XLII-45 Coaches Model Year: 2003 – 2004	2PCX3349631028118, 2PCX3349041028178	

DESCRIPTION

Due to the parts unavailability at the time of fabrication of the above-mentioned vehicles, the brake chambers must now be replaced with chambers of appropriate dimensions. Perform procedure described in section 1 for all vehicles listed above except 2PCH3349541014765. Perform procedure described in section 2 for vehicle 2PCH3349541014765 only.

SECTION 1: All Vehicles except 2PCH3349541014765

MATERIAL

Part No.	Description	Qty
611276	Brake Chamber, type 27 R.H. Side	1

611277	Brake Chamber, type 27 L.H. Side	1
641980	Tag Axle Brake Chamber, type 14-16	2
5001253	Nut, Hex Stover DP M16-1.5	8

Note: Material can be obtained through regular channels.

PART A: INDEPENDENT FRONT SUSPENSION

PROCEDURE

Warning: Park vehicle safely, apply parking brake, stop engine and set battery master switch(es) to the OFF position prior to working on the vehicle.

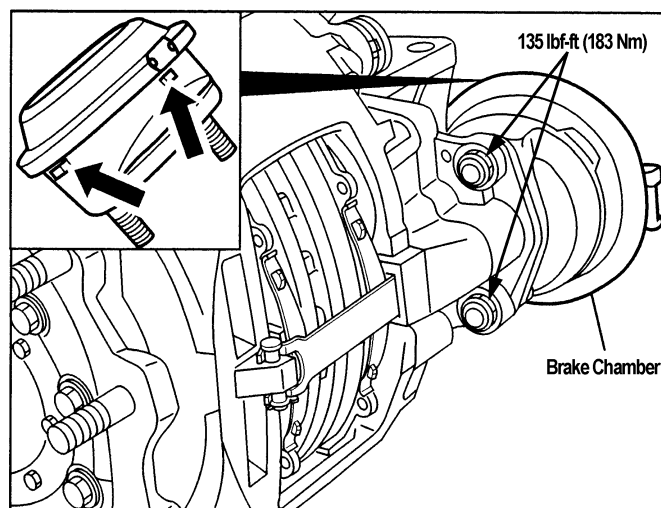


FIGURE 1

Independent Front Suspension Brake Chamber Removal

1. Block the wheels to prevent the vehicle from moving.
2. Safely support vehicle at the recommended body jacking points.
3. To gain access to the brake air chamber, the corresponding wheel can be removed (refer to Maintenance Manual, Section 13: "Wheels, Hubs and Tires").
4. Exhaust compressed air from system by opening the drain valve of each reservoir.
5. Disconnect air line(s) from brake chamber.
6. Unscrew brake chamber mounting nuts (refer to figure 1).

Note: Do not reuse mounting nuts.

7. Remove type 24 brake chamber from vehicle.

Type 27 Brake Chamber Installation

1. Reverse removal procedure.
2. Tighten new mounting nuts (5001253) to 135 lbf-ft (183 Nm) (refer to figure 1).

Note: New brake chambers have drain plugs installed. Remove bottom plugs (see arrows in fig. 1). All other drain holes should be plugged.

Caution: Make sure that air lines are positioned as per figure 2.

3. Check brake adjustment.

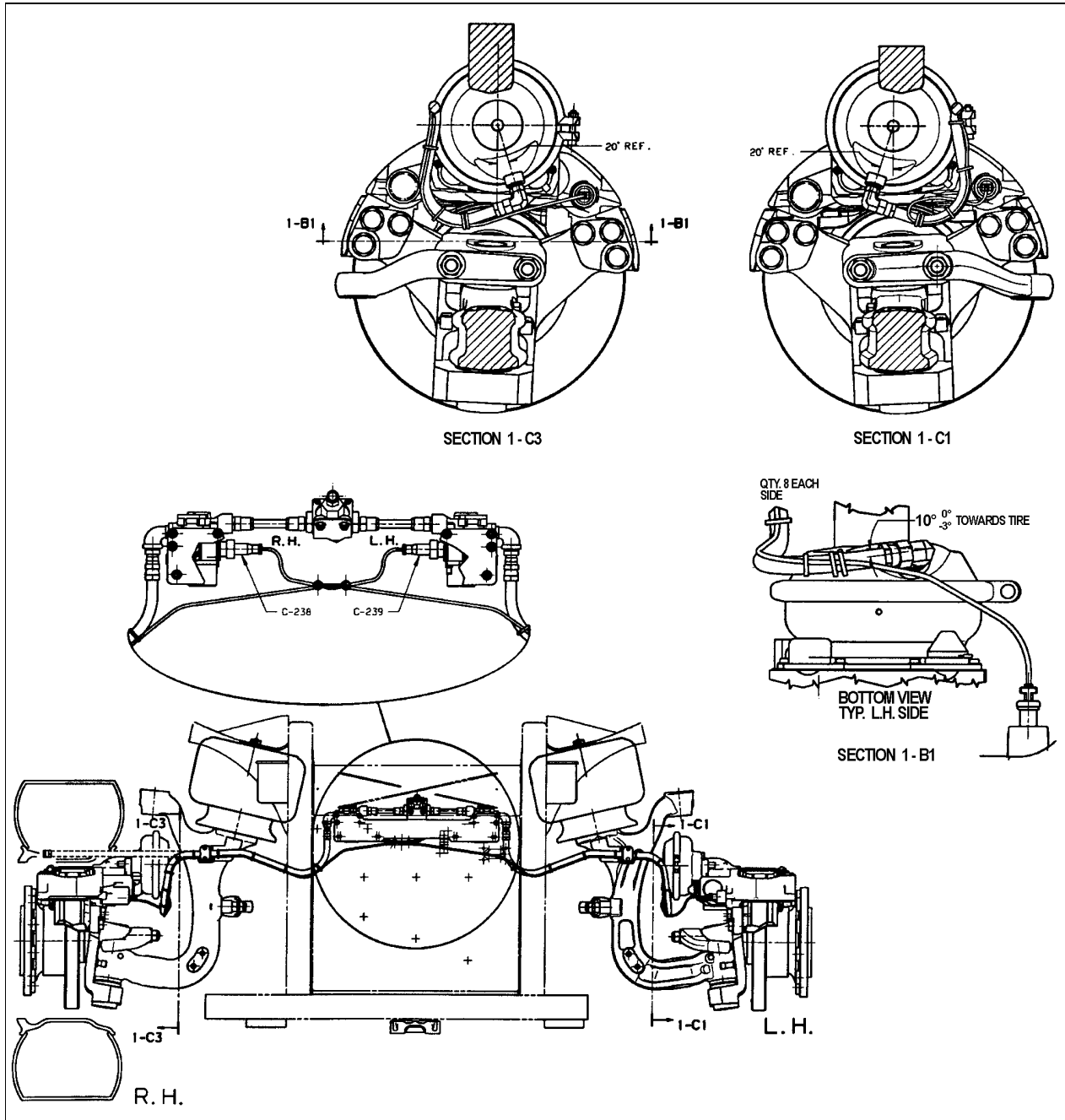


FIGURE 2

Caution: Always clean air lines and fittings, and coat pipe threads with Teflon pipe sealant before reconnecting air lines.

PART B: TAG AXLE SUSPENSION

PROCEDURE

Warning: Park vehicle safely, apply parking brake, stop engine and set battery master switch(es) to the OFF position prior to working on the vehicle.

Tag Axle Suspension Brake Chamber Removal

Warning: To prevent personal injuries, brakes should be inoperative prior to working on any of their components.

Warning: To prevent personal injuries, brake chambers should be made inoperative by releasing spring tension prior to disposal.

1. Block the wheels to prevent the vehicle from moving.
2. Safely support vehicle at the recommended body jacking points.
3. To gain access to the brake air chamber, the corresponding wheel can be removed (refer to Maintenance Manual, Section 13: "Wheels, Hubs and Tires").
4. Exhaust compressed air from system by opening the drain valve of each reservoir.
5. For the tag axle brake chambers, manually release spring brakes (refer to "Emergency/Parking Brake, Manual Release" procedure hereafter).
6. Disconnect air line(s) from brake chamber.
7. Unscrew brake chamber mounting nuts (refer to figure 1).

Note: Do not reuse mounting nuts.

8. Remove type 16-16 brake chamber from vehicle.

Type 14-16 Brake Chamber Installation

1. Reverse removal procedure.
2. Tighten new mounting nuts (5001253) to 135 lbf-ft (183 Nm) (refer to figure 1).
3. Check brake adjustment.

Caution: Always clean air lines and fittings, and coat pipe threads with Teflon pipe sealant before reconnecting air lines.

Emergency/Parking Brake Manual Release

Warning: Never stand in the axis line of the spring brake chambers, especially when caging the spring.

Tag Axle

1. Block the wheels to prevent the vehicle from moving.
2. Turn the release nut counterclockwise to cage the power spring (approx. 2.5 inches (6 cm)). Repeat on the opposite side (refer to figure 3).
3. To manually reset the emergency/parking brake, turn the nut clockwise.

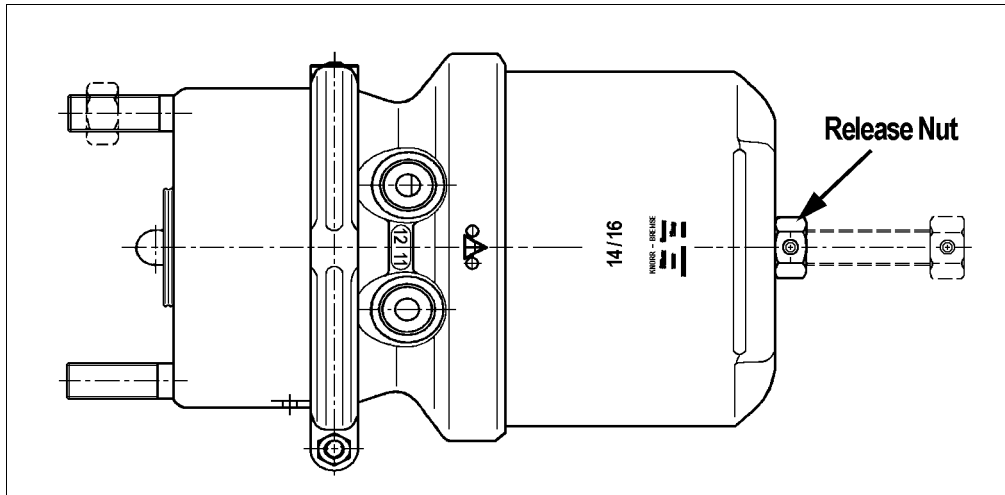


FIGURE 3

SECTION 2: Vehicle 2PCH3349541014765 only

MATERIAL

Part No.	Description	Qty
641980	Tag Axle Brake Chamber, type 14-16	2
5001253	Nut, Hex Stover DP M16-1.5	8

Note: Material can be obtained through regular channels.

PART A: I-BEAM FRONT SUSPENSION

PROCEDURE

Warning: Park vehicle safely, apply parking brake, stop engine and set battery master switch(es) to the OFF position prior to working on the vehicle.

1. Unscrew brake chamber mounting nuts (refer to figure 1).

Note: Do not reuse mounting nuts.

2. Tighten new mounting nuts (5001253) to 135 lbf-ft (183 Nm) (refer to figure 1).
3. Check brake adjustment.

PART B: TAG AXLE SUSPENSION

PROCEDURE

Warning: Park vehicle safely, apply parking brake, stop engine and set battery master switch(es) to the OFF position prior to working on the vehicle.

Tag Axle Suspension Brake Chamber Removal

Warning: To prevent personal injuries, brakes should be inoperative prior to working on any of their components.

Warning: To prevent personal injuries, brake chambers should be made inoperative by releasing spring tension prior to disposal.

1. Block the wheels to prevent the vehicle from moving.
2. Safely support vehicle at the recommended body jacking points.
3. To gain access to the brake air chamber, the corresponding wheel can be removed (refer to Maintenance Manual, Section 13: "Wheels, Hubs and Tires").
4. Exhaust compressed air from system by opening the drain valve of each reservoir.
5. For the tag axle brake chambers, manually release spring brakes (refer to "Emergency/Parking Brake, Manual Release" procedure later in this bulletin).
6. Disconnect air line(s) from brake chamber.
7. Unscrew brake chamber mounting nuts (refer to figure 1).

Note: Do not reuse mounting nuts.

8. Remove type 16-16 brake chamber from vehicle.

Type 14-16 Brake Chamber Installation

1. Reverse removal procedure.
2. Tighten new mounting nuts (5001253) to 135 lbf-ft (183 Nm) (refer to figure 1).

Note: New brake chambers have drain plugs installed. Remove bottom plugs (see arrows in fig. 1). All other drain holes should be plugged.

3. Check brake adjustment.

Caution: Always clean air lines and fittings, and coat pipe threads with Teflon pipe sealant before reconnecting air lines.

Emergency/Parking Brake Manual Release

Warning: Never stand in the axis line of the spring brake chambers, especially when caging the spring.

Tag Axle

1. Block the wheels to prevent the vehicle from moving.
2. Turn the release nut counterclockwise to cage the power spring (approx. 2.5 inches (6 cm)). Repeat on the opposite side (refer to figure 3).
3. To manually reset the emergency/parking brake, turn the nut clockwise.

WARRANTY

This modification is covered by Prévost Car's normal warranty. We will reimburse you the parts and two hours (2.0) of labor for Section 1 or one and a quarter hour (1.25) of labor for section 2 upon receipt of a completed A.F.A. form on which you must specify as per "Warranty Bulletin 03-18" Section 1 or Section 2.