


PREVOST

Warranty Bulletin

95-37

Date: **November 1995**
Section: **05**
Subject: **MODIFICATION TO RADIATOR FAN CLUTCH CIRCUIT**
Application:

Model	VIN	
XL Series vehicles equipped with a "World" transmission provided with a retarder Model Year: 1994 - 1995 - 1996	2P9L33407R <u>1001928</u> up to 2PCM33495 <u>I1025701</u> incl.	
H3-41 and H3-45 Series vehicles equipped with a "World" transmission provided with a retarder Model Year: 1994 -1995 - 1996	2P9H33495R <u>1001012</u> up to 2PCV33494 <u>I1011339</u> incl.	

DESCRIPTION

Subsequent to severe road tests performed by our Engineering department, it has been concluded that it was advisable to increase radiator ventilation when the transmission output retarder is in operation. Therefore, we have modified the fan clutch circuit in order to activate the fan (first speed) as soon as the retarder is in operation, then the second speed after a delay of approximately 7 seconds. Perform this modification according to the following procedure.

Note: For a better understanding, this bulletin is divided in 3 parts.

Part A (See pages 2 to 5)

Modification to perform on "H" series vehicles.

Part B (See pages 6 to 8)

Modification to perform on "XL-45' coaches" provided with a series 60 engine and on "XL-40' coaches" provided with a series 50 engine.

Part C (See pages 9 to 11)

Modification to perform on "XL-40' coaches" provided with a series 60 engine and on all "XL converted vehicles" (40 - 45E - 45).

Part A (Modification to perform on "H" series vehicles)

MATERIAL

Part No.	Description	Qty
064222	Fan clutch module	1
500883	Phillips head screw #8-32 x 3/8"	2
500470	Lock washer #10	2
560710	Quick connector	4

Note: Material will be available as of January 15th, 1996 and can be obtained through regular channels.

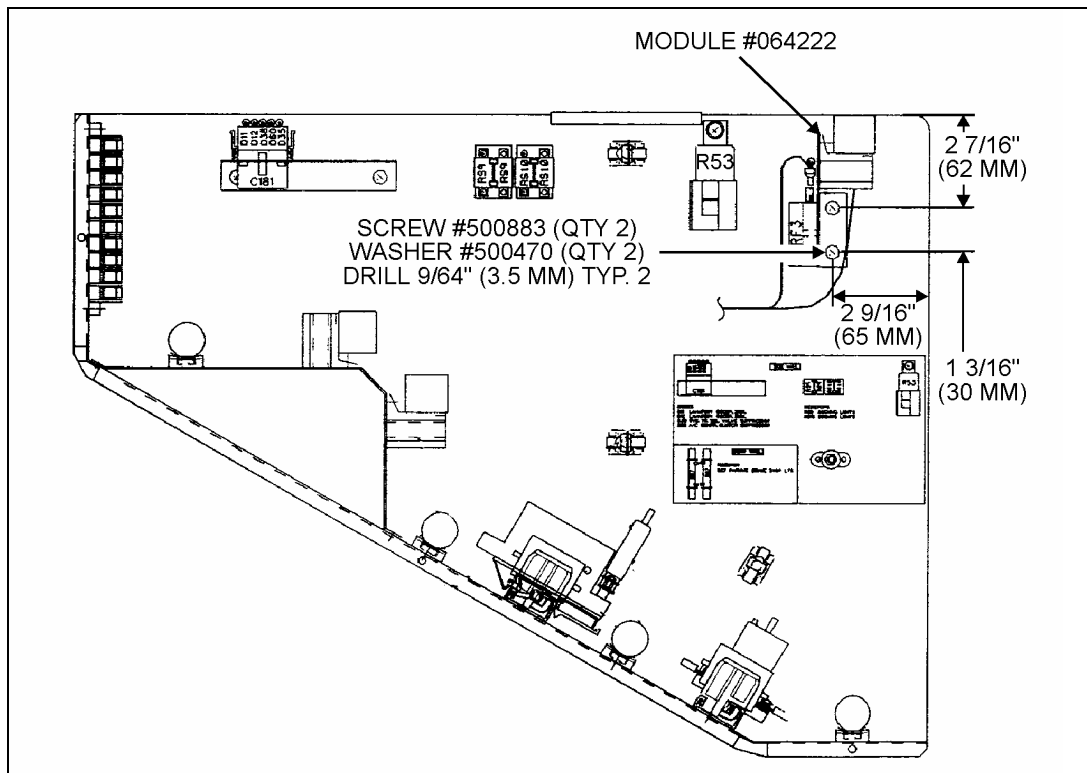
PROCEDURE

Warning: Park vehicle safely, apply parking brake, stop engine and set battery master switch (use toggle switch inside main power compartment) to the "OFF" position prior to working on the vehicle.

1. Open rear electric compartment door located on L.H. side of vehicle.
2. Locate mounting panel fixed inside compartment on R.H. wall, position fan control module #064222 as illustrated in figure 1, then mark position of the two holes to be drilled.
3. Drill two holes using a 9/64" (3.5 mm) diameter bit.

Caution: Drill only the mounting panel; do not pierce through R.H. wall.

4. Fix fan control module to mounting panel using two Phillips head screws #500883 and lock washers #500470.



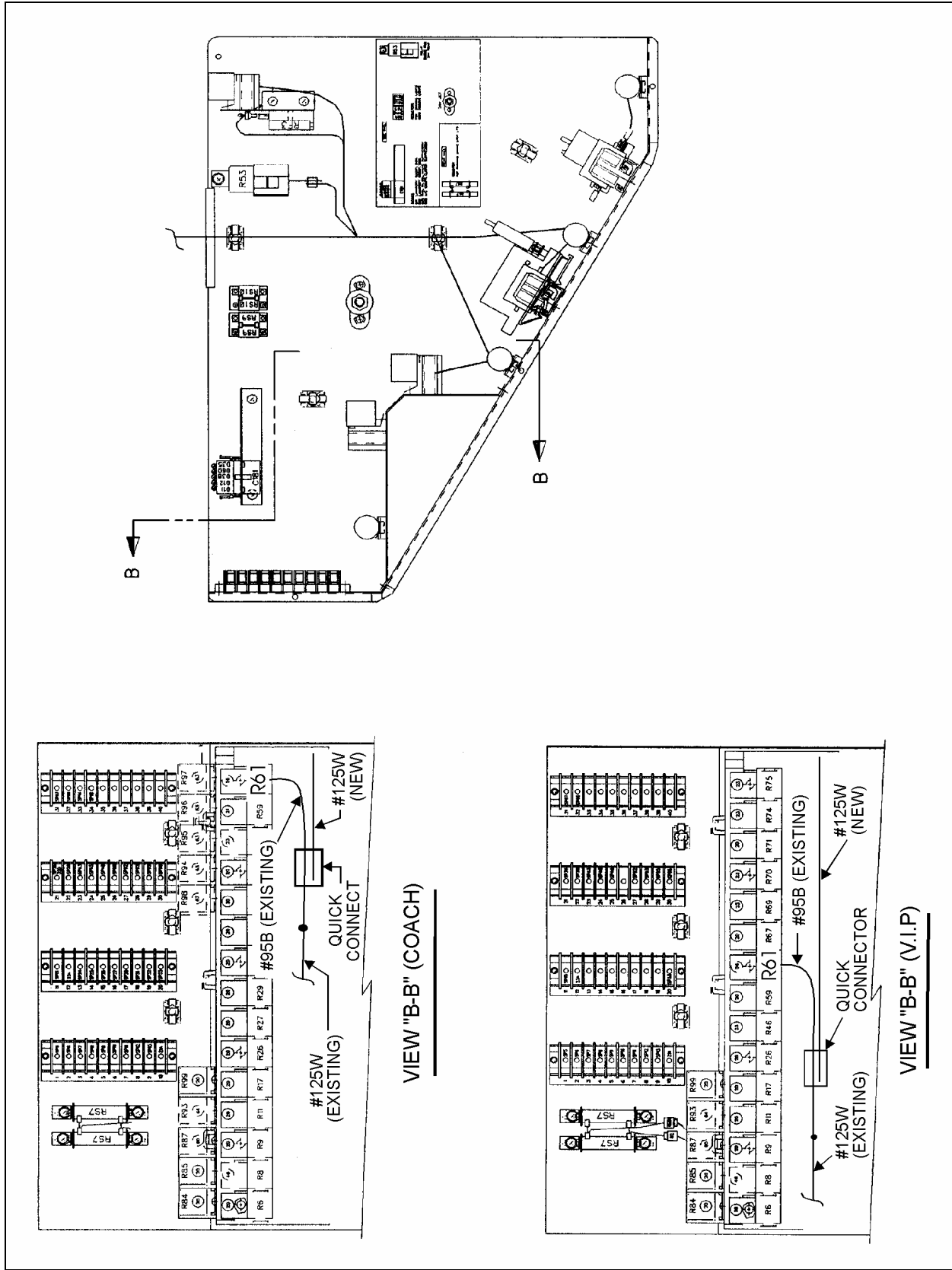


FIGURE 3

-
5. Identify on wires provided with fan control module, the red wires #291 and #292. Route these wires up to white connector C414. Tap wire #291 with connector C414's wire #291 using quick connector #560710. Repeat for wires #292. See figure 2 (page 3).

Note: *The white connector C414 is attached with black connector C91 fixed in upper R.H. corner of compartment.*

6. Identify on wires provided with fan control module, the red wire #85, cut this wire near ring terminal, discard terminal, then route wire up to relay base R53. Tap wire #85 with relay base R53's wire #85 using quick connector #560710. See figure 2.
7. Identify on wires provided with fan control module, the black wire #OR, route this wire up to negative post identified "N", then connect to this post. See view "A-A" in figure 2.
8. Identify on wires provided with fan control module, the black wire #125W, route this wire up to relay base R61 then tap wire #125W with relay base R61's wire #95B using quick connector #560710. See the appropriate view "B-B" in figure 3 (page 4).

Note: *Wire #95B becomes wire #125W at a connection located only a few inches away from relay base R61. Consequently, new wire #125W can be connected to existing wire #125W, if preferred.*

9. Close rear electric compartment door.

WARRANTY

This modification is covered by the manufacturer's normal warranty. We will reimburse you the parts and one hour (1.0) of labor upon receipt of a completed A.F.A. form on which you must specify as per "Warranty Bulletin 95-37".

Expiration date: November 1996

Part B (Modification to perform on "XL-45' coaches" provided with a series 60 engine and on "XL-40' coaches" provided with a series 50 engine)

MATERIAL

Part No.	Description	Qty
064222	Fan clutch module	1
500883	Phillips head screw #8-32 x 3/8"	2
500470	Lock washer #10	2
560710	Quick connector	3

Note: Material will be available as of January 15th, 1996 and can be obtained through regular channels.

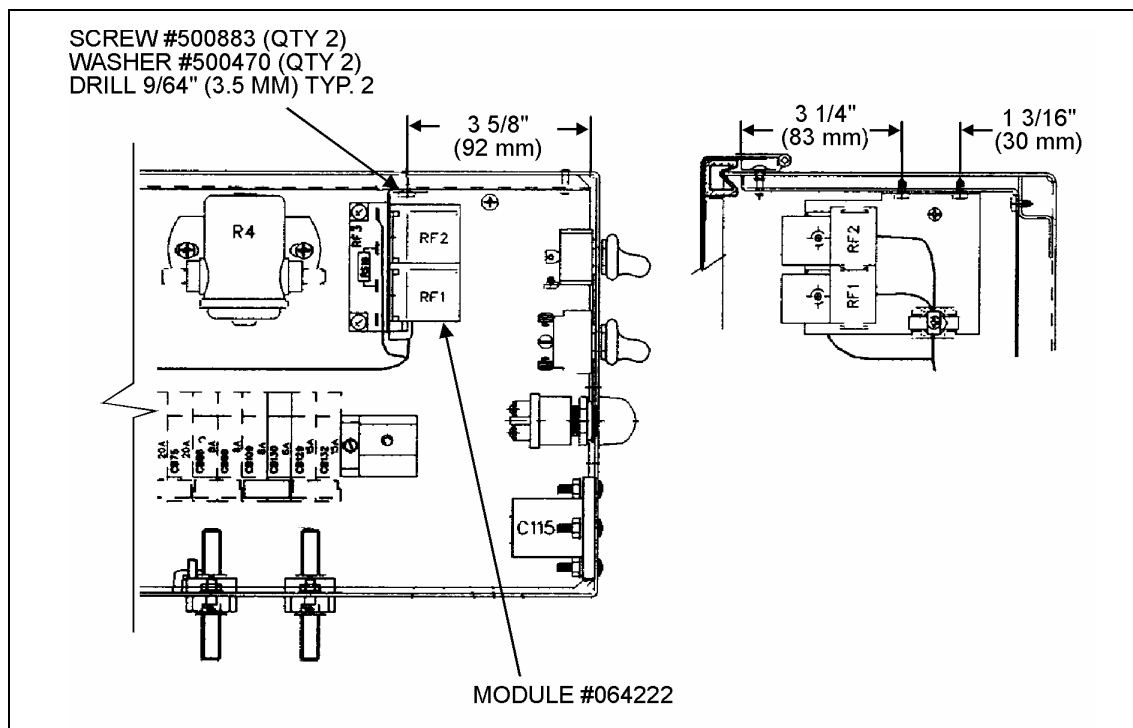
PROCEDURE

Warning: Park vehicle safely, apply parking brake, stop engine and set battery master switch(es) to the "OFF" position prior to working on the vehicle.

1. Open engine compartment rear doors, locate electric junction box, then open panel.
2. Position fan control module #064222 as illustrated in figure 4, then mark position of the two holes to be drilled.
3. Drill two holes using a 9/64" (3.5 mm) diameter bit.

Caution: Drill only the mounting panel; do not pierce through junction box.

4. Fix fan control module to mounting panel using two Phillips head screws #500883 and lock washers #500470.



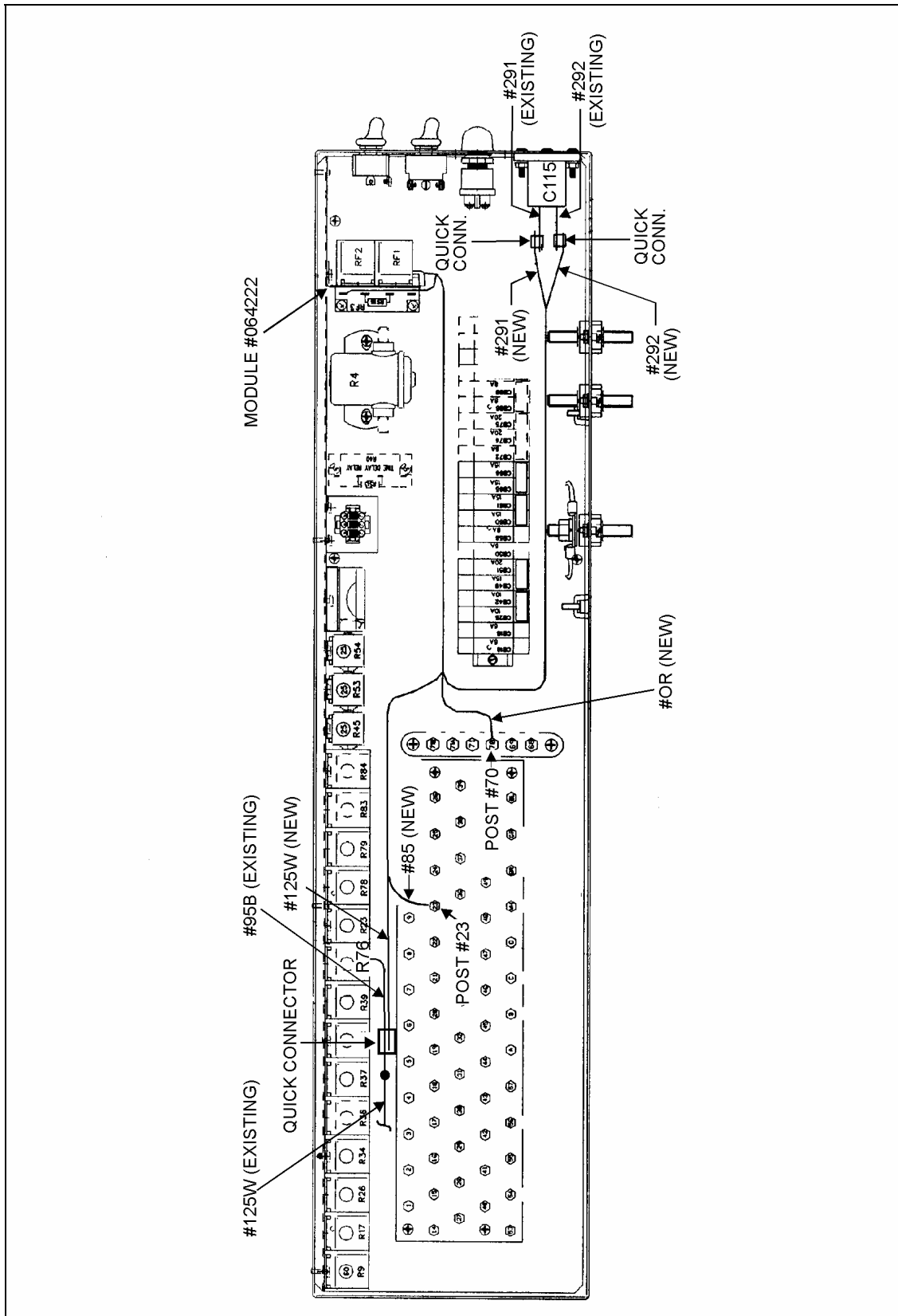


FIGURE 5

-
5. Identify on wires provided with fan control module, the red wires #291 and #292. Route these wires up to connector C115 following existing harnesses (see fig. 5, page 7). Tap wire #291 with connector C115's wire #291 using quick connector #560710. Repeat for wires #292.
 6. Identify on wires provided with fan control module, the red wire #85, route this wire up to post #23 then connect to this post.
 7. Identify on wires provided with fan control module, the black wire #OR, route this wire up to post #70 then connect to this post.
 8. Identify on wires provided with fan control module, the black wire #125W, route this wire up to relay base R76 then tap wire #125W with relay base R76's wire #95B using quick connector #560710.

Note: Wire #95B becomes wire #125W at a connection located only a few inches away from relay base R76. Consequently, new wire #125W can be connected to existing wire #125W, if preferred.

9. Close electric junction box then engine compartment rear doors.

WARRANTY

This modification is covered by the manufacturer's normal warranty. We will reimburse you the parts and one hour (1.0) of labor upon receipt of a completed A.F.A. form on which you must specify as per "Warranty Bulletin 95-37".

Expiration date: November 1996

Part C (Modification to perform on "XL-40' coaches" provided with a series 60 engine and on all "XL converted vehicles" (40 - 45E - 45))

MATERIAL

Part No.	Description	Qty
064222	Fan clutch module	1
500386	Phillips head screw #10-24 x 1/2"	2
500470	Lock washer #10	2
500786	Hexagonal nut #10-24	2
560710	Quick connector	3

Note: Material will be available as of January 15th, 1996 and can be obtained through regular channels.

PROCEDURE

Warning: Park vehicle safely, apply parking brake, stop engine and set battery master switch(es) to the "OFF" position prior to working on the vehicle.

1. Open engine compartment rear doors, locate electric junction box, then open panel.
2. Position fan control module #064222 as illustrated in figure 6, then mark position of the two holes to be drilled.
3. Drill two holes using a 13/64" (5 mm) diameter bit.
4. Fix fan control module to junction box using two Phillips head screws #500386, lock washers #500470 and hexagonal nuts #500786.

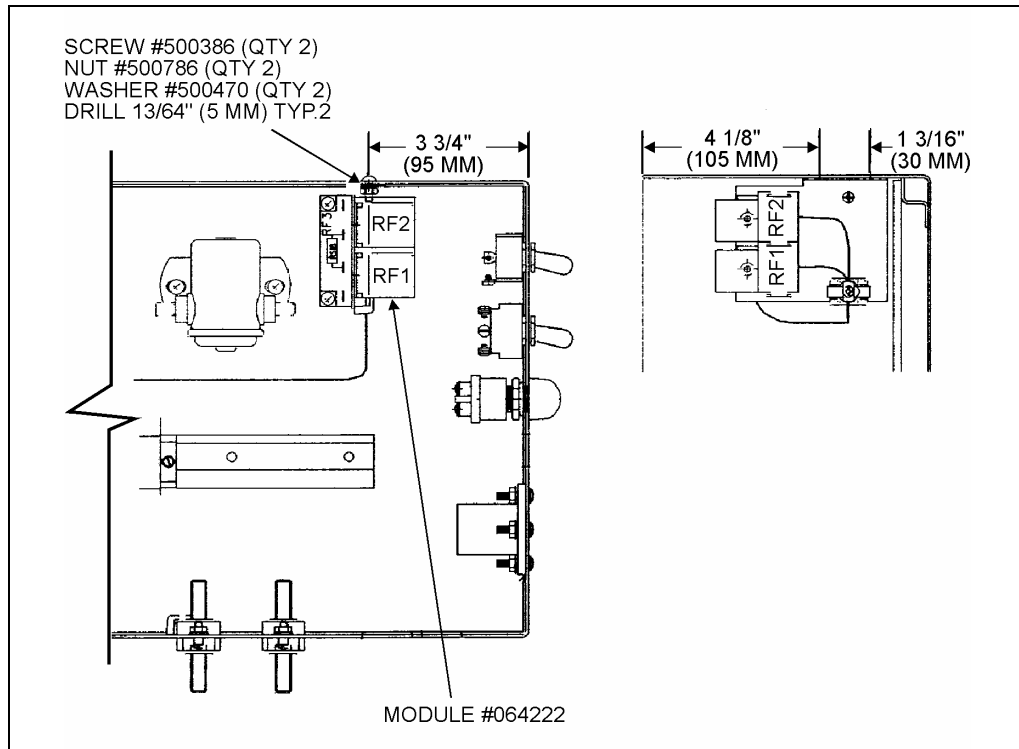


FIGURE 6

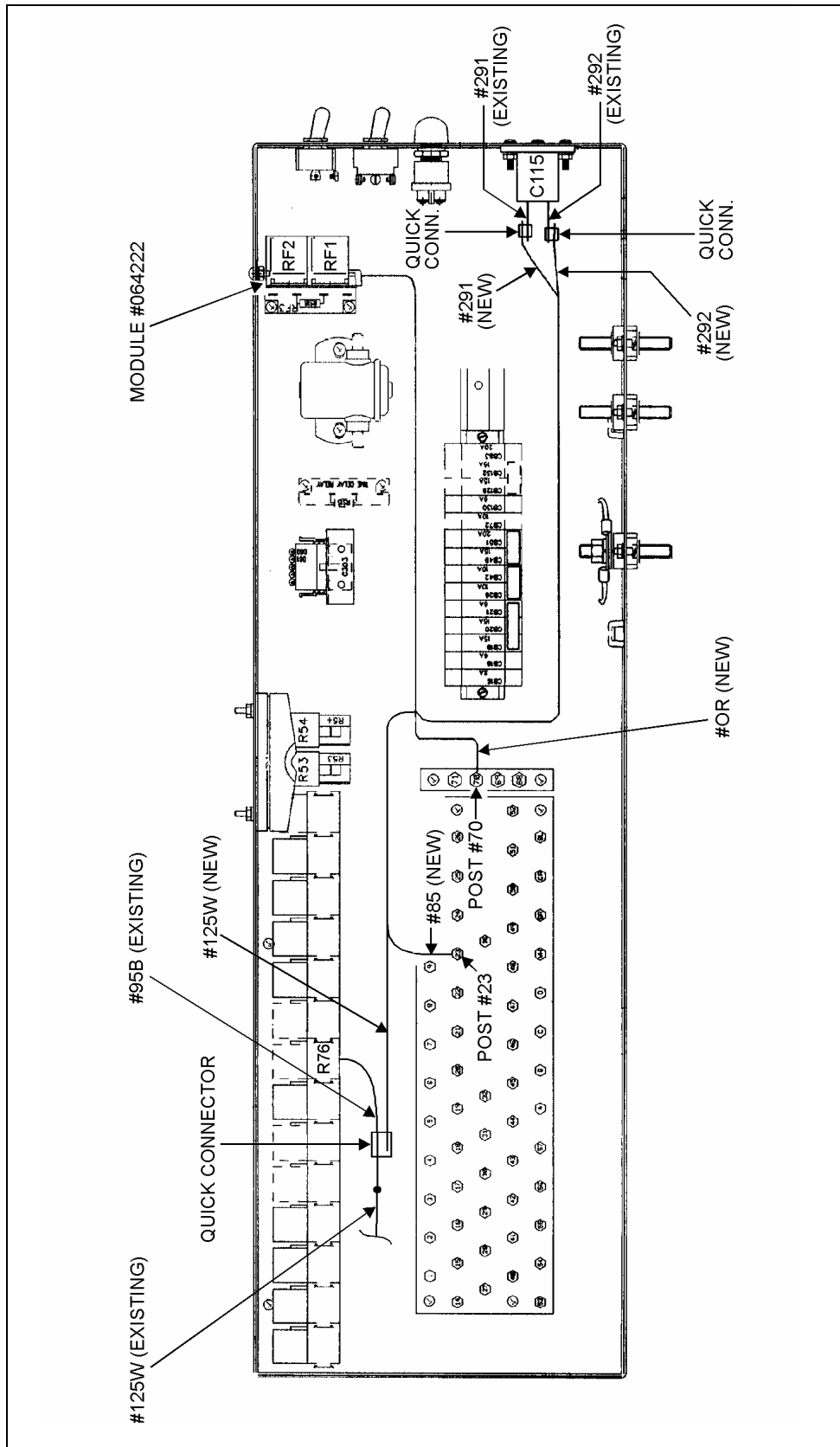


FIGURE 7

-
5. Identify on wires provided with fan control module, the red wires #291 and #292. Route these wires up to connector C115 following existing harnesses (see fig. 7, page 10). Tap wire #291 with connector C115's wire #291 using quick connector #560710. Repeat for wires #292..
 6. Identify on wires provided with fan control module, the red wire #85, route this wire up to post #23 then connect to this post.
 7. Identify on wires provided with fan control module, the black wire #OR, route this wire up to post #70 then connect to this post.
 8. Identify on wires provided with fan control module, the black wire #125W, route this wire up to relay base R76 then tap wire #125W with relay base R76's wire #95B using quick connector #560710.

Note: *Wire #95B becomes wire #125W at a connection located only a few inches away from relay base R76. Consequently, new wire #125W can be connected to existing wire #125W, if preferred.*

9. Close electric junction box then engine compartment rear doors.

WARRANTY

This modification is covered by the manufacturer's normal warranty. We will reimburse you the parts and one hour (1.0) of labor upon receipt of a completed A.F.A. form on which you must specify as per "Warranty Bulletin 95-37".

Expiration date: November 1996