

PREVOST


Warranty Bulletin

96-06A

Date: **JUNE 1996**
 Section: **03**
 Subject: **FLEXIBLE PICK-UP TUBE ON POLYETHYLENE FUEL TANK**
 Revision A:

Modifications to vehicles involved (see V.I.N. in the application table).

Application:

Model	VIN
H3-41 Coach Model Year : 1995 - 1996	 <p>From 2P9H33415S1001284 up to 2P9H33411S1001296 incl. from 2P9H33410T1011300 up to 2PCH33413T1011517 incl. except : 2PCH33412T1011475, 2PCH33418T1011478, 2PCH33418T1011481, 2PCH33415T1011485.</p>
H3-45 Coach Model Year : 1995 - 1996	<p>From 2P9H33491S1001286 up to 2P9H3349XS1001299 incl. from 2PCH33495T1011301 up to 2PCH33493T1011510 incl. except : 2PCH33496T1011470, 2PCH33496T1011498, 2PCH33492T1011501.</p>
H3-45 VIP Converted Coach Shell Model Year : 1996	<p>From 2PCV33499T1011305 up to 2PCV33494T1011521 incl. except : 2PCV33492T1011310, 2PCV33492T1011324, 2PCV33491T1011458.</p>
XL-45 Coach Model Year : 1995 - 1996	<p>From 2P9L33490S1001497 up to 2P9L33491S1001640 incl. from 2PCL33492T1025666 up to 2PCL33495T1025872 incl.</p>

DESCRIPTION

On the above mentioned vehicles, it is possible that a failure happens at the engine pick-up tubes (auxiliary, engine and preheating system) inside the polyethylene fuel tank. To prevent this failure from happening, it is recommended that you perform the modifications described herein.

MATERIAL - H3 SERIES

RETROFIT KIT FOR H3 SERIES VEHICLES Part No.	Description	Qty
032127	<p>Retrofit kit for H3 Series vehicles' flexible pick-up tube replacement including:</p> <ul style="list-style-type: none"> - Fuel tank control panel (Qty: 1; Prévost #032114) - Adapter, straight ½ P (Qty: 2; Prévost #501034) - Cap nut (Qty: 1; Prévost #501054) - Cap nut (Qty: 1; Prévost #501053) - Plug (Qty: 3; Prévost #501306) - Plug (Qty: 1; Prévost #501304) - Fitting hose #10, straight (Qty: 4; Prévost #501942) - Hose clamp (Qty: 4; Prévost #504019) - Tube #4, 48 inches (Qty: 1; Prévost #531416) - Hose clamp (Qty: 2; Prévost #504014) - Fitting hose #3B, straight (Qty: 1; Prévost #5011064) - Fitting hose #4B, straight (Qty: 3; Prévost #507602) - Tube #10, 48 inches (Qty: 2; Prévost #531417) - Adapter, straight ½ P (Qty: 2; Prévost #501616) - Teflon, tape (Qty: 1; Prévost #680110) - Adapter, T shape, 1/4P # 4 (Qty: 1; Prévost #501337) - Adapter, T shape, 1/2P # 10 (Qty: 2; Prévost #501472) - Gasket (Qty:1; Prévost #032014) - O-ring (Qty:1; Prévost #507346) - Gasket (Qty:1; Prévost #531419) - Copper washer (Qty:12; Prévost #505512) <p>Note: It is preferable to use sealing (Prévost #680098 or an equivalent) (not include in this kit) instead of Teflon (Prévost #680110).</p> <ul style="list-style-type: none"> - Warranty bulletin 96-06 (Qté:1) - Bulletin de garantie 96-06 (Qté:1) 	1

Note: Material can be obtained through regular channels.

PROCEDURE

Warning: Park vehicle safely, apply parking brake, stop engine and set battery master switch(es) to the OFF position prior to working on the vehicle.

Warning: Fuel is flammable and may explode under certain conditions. Always manipulate in a well-ventilated area. Do not smoke or allow open flames or sparks in the vicinity.

Note: If fuel tank is full, drain it to a level that eliminates overflowing, when removing control panel. Drain fuel tank by unscrewing the drain plug, located underneath vehicle at A/C Condenser and HVAC compartment level.

H3 SERIES VEHICLES

OLD FUEL TANK CONTROL PANEL REMOVAL

1. From inside In condenser compartment (R.H. side of vehicle), locate fuel tank access panel and remove it.
2. Unscrew engine supply and return lines from fuel tank control panel. Identify them for reinstallation.
3. If applicable, unscrew preheater supply line, preheater return line, auxiliary supply line and/or auxiliary return line from fuel tank control panel. Identify them for reinstallation.
4. Remove fuel gage.
5. Remove tube from overflow valve.
6. Remove the 12 hexagonal head screws and remove control panel. Discard the 12 copper washers and seal.

NEW FUEL TANK CONTROL PANEL ASSEMBLY

Note: Where required, use old control panel parts.

Note: Use a Loctite 567™ type thread sealant on all threads.

1. Preassemble the three pick-up (suction) tubes on the new control panel (Prévost #032114) as illustrated in figure 1.

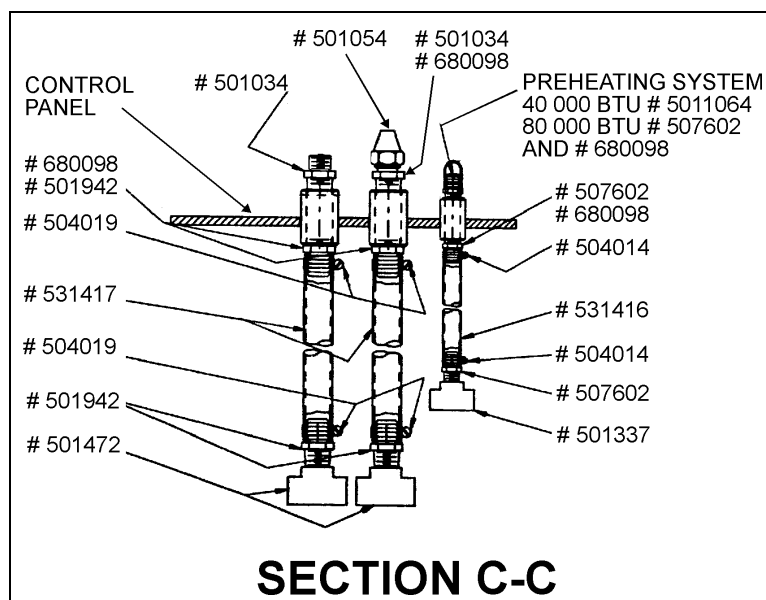


FIGURE 1: PICK-UP (SUCTION) TUBES ASSEMBLY

03019

- Where applicable, install the following adapters on fuel tank control panel : preheater supply line, auxiliary return line and engine return line (Fig. 2).

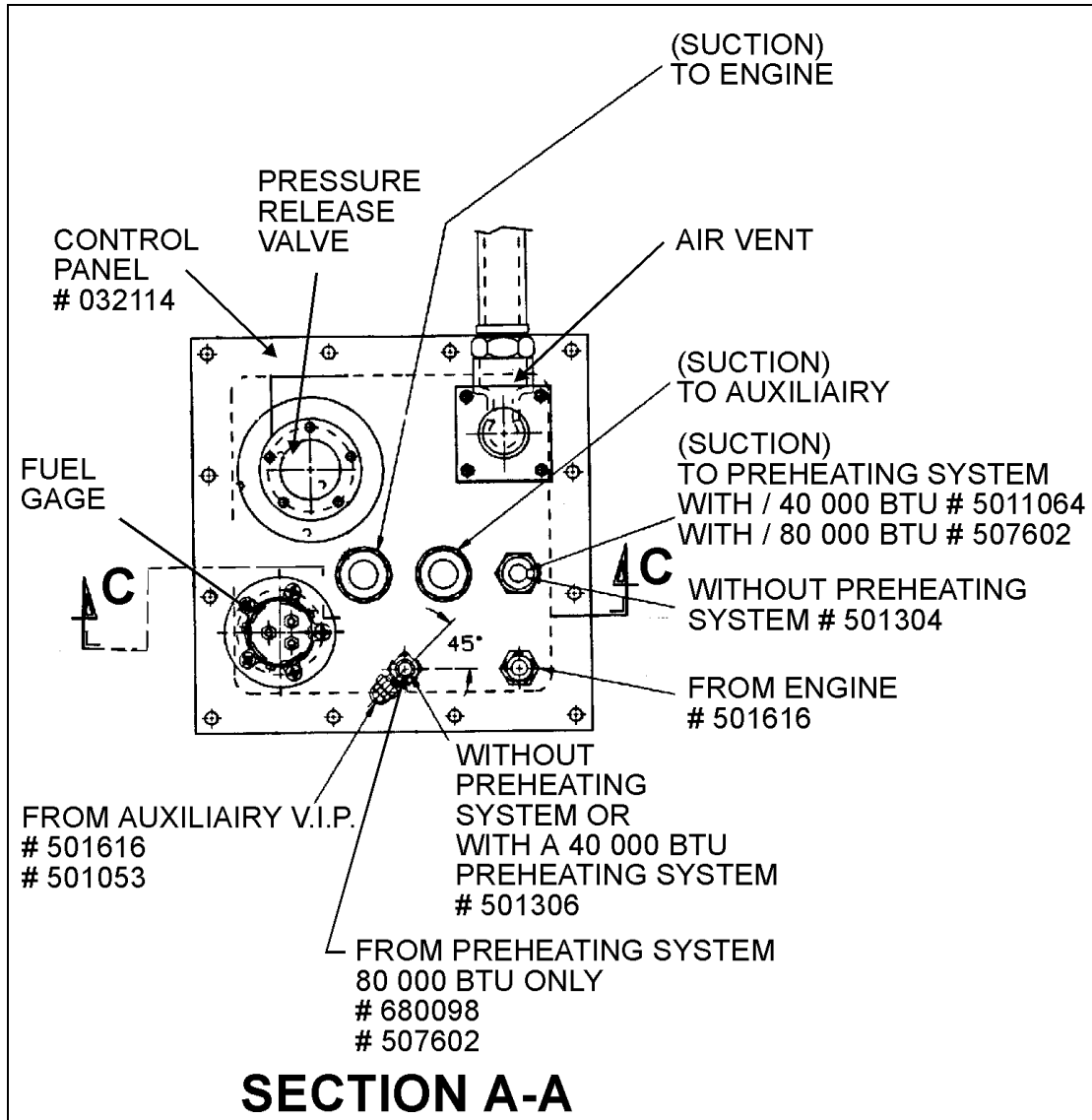


FIGURE 2

03020

- Install overflow valve to control panel.
- Install release pressure valve.

INSTALLATION OF THE NEW CONTROL PANEL ON FUEL TANK

Note: Use a Loctite 567™ type sealant on all threads.

- Using new seal and new copper washers (Prévost #032014 and #505512), install new fuel tank control panel (Fig. 3).
- If applicable, assemble preheater supply line, preheater return line, auxiliary supply line and/or auxiliary return line to fuel tank control panel.
- Install the engine supply and return line.

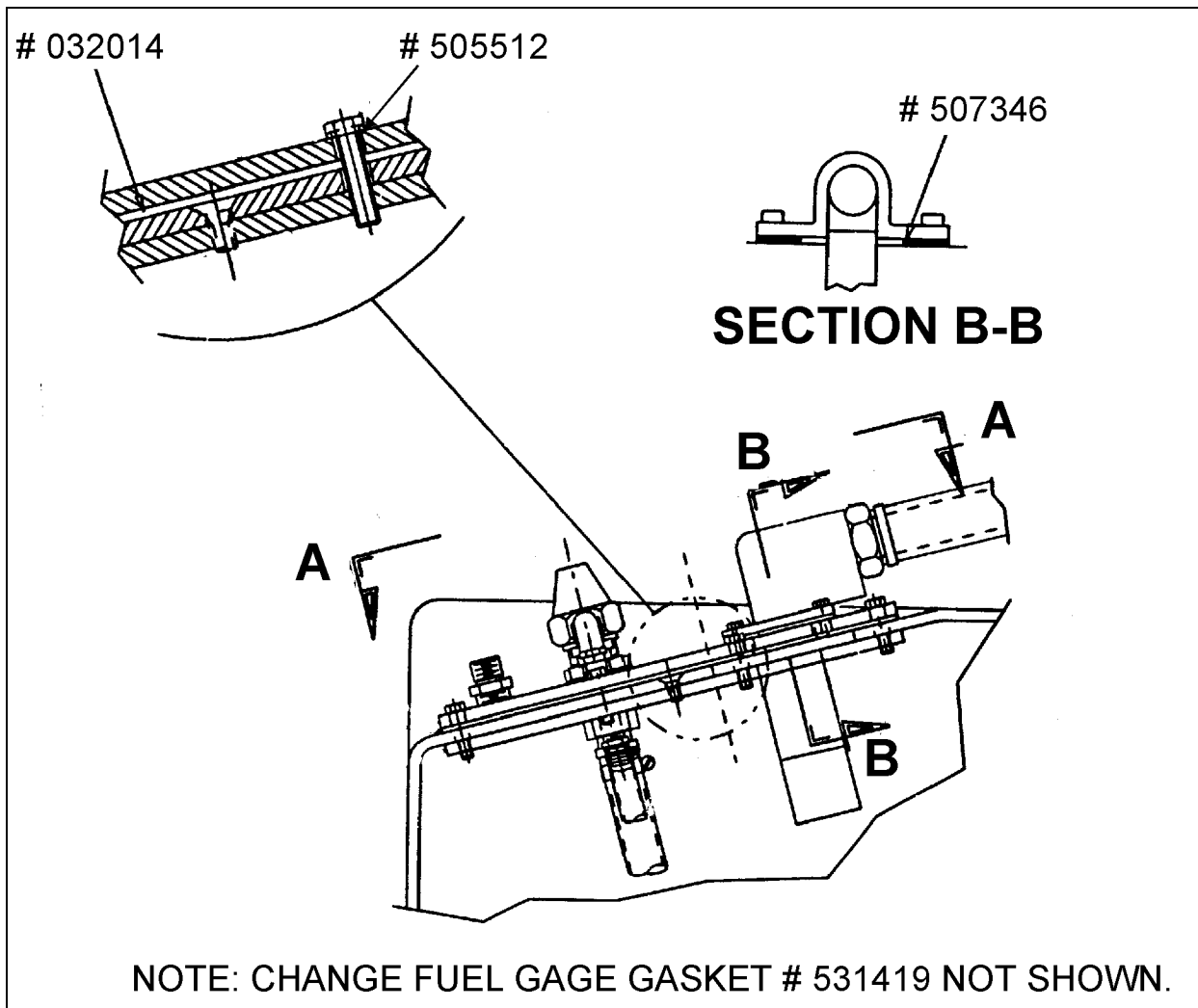


FIGURE 3

03021

4. Assemble fuel gage indicator.
5. Assemble tube on overflow valve.
6. If vehicle is NOT equipped with preheating system:
 - Install plug on "from (Prévost # 501306) and to (Prévost # 501304) preheating system" port (Fig. 2).
- If vehicle is equipped with an Espar (40 000 btu) preheating system:
 - Install plug (Prévost # 501306) on "from preheating system" port (Fig. 2).
7. Replace fuel tank access panel.
8. Refer to "Fuel System Priming" at the end of this bulletin (page 9).

MATERIAL - XL SERIES

RETROFIT KIT FOR XL SERIES VEHICLES Part No.	Description	Qty
032128	<p>Retrofit kit for XL Series vehicles' flexible pick-up tube replacement including:</p> <ul style="list-style-type: none"> - Fuel tank control panel (Qty: 1; Prévost #032117) - Adapter, straight ½ P (Qty: 2; Prévost #501034) - Cap nut (Qty: 1; Prévost #501054) - Cap nut (Qty: 1; Prévost #501053) - Plug (Qty: 3; Prévost #501306) - Plug (Qty: 1; Prévost #501304) - Fitting hose #10, straight (Qty: 4; Prévost #501942) - Hose clamp (Qty: 4; Prévost #504019) - Tube #4, 48 inches (Qty: 1; Prévost #531416) - Hose clamp (Qty: 2; Prévost #504014) - Fitting hose #3B, straight (Qty: 1; Prévost #5011064) - Fitting hose #4B, straight (Qty: 3; Prévost #507602) - Tube #10, 48 inches (Qty: 2; Prévost #531417) - Adapter, straight ½ P (Qty: 2; Prévost #501616) - Teflon (Qty: 1; Prévost #680110) - Adapter, T shape, 1/4P # 4 (Qty: 1; Prévost #501337) - Adapter, T shape, 1/2P # 10 (Qty: 2; Prévost #501472) - Gasket (Qty:1; Prévost #031849) - Gasket (Qty:1; Prévost #531419) - Copper washer (Qty:6; Prévost #505512) <p>Note: It is preferable to use sealing (Prévost #680098 or an equivalent) (not include in this kit) instead of Teflon (Prévost #680110).</p> <ul style="list-style-type: none"> - Warranty bulletin 96-06 (Qté:1) - Bulletin de garantie 96-06 (Qté:1) 	1

Note: Material can be obtained through regular channels.

XL SERIES VEHICLES

OLD FUEL TANK CONTROL PANEL REMOVAL

1. From inside condenser compartment (R.H. side of vehicle), locate fuel tank access panel and remove it.
2. Unscrew engine supply lines from fuel tank control panel. Identify it for reinstallation.

Note: For XL Series vehicles, engine return line is not installed on control panel. It is located on a filler tube. Do not remove it during this procedure.

3. If applicable, unscrew preheater supply line, preheater return line, auxiliary supply line and/or auxiliary return line from fuel tank control panel. Identify them for reinstallation.
4. Remove fuel gage.
5. Remove the 6 hexagonal head screws and remove control panel. Discard the 6 copper washers and seal.

NEW FUEL TANK CONTROL PANEL ASSEMBLY

Note: Where required, use old control panel parts.

Note: Use a Loctite 567™ type sealant on all threads.

1. Preassemble the three pick-up (suction) tubes on the new control panel (Prévost #032117) as illustrated in figure 4.

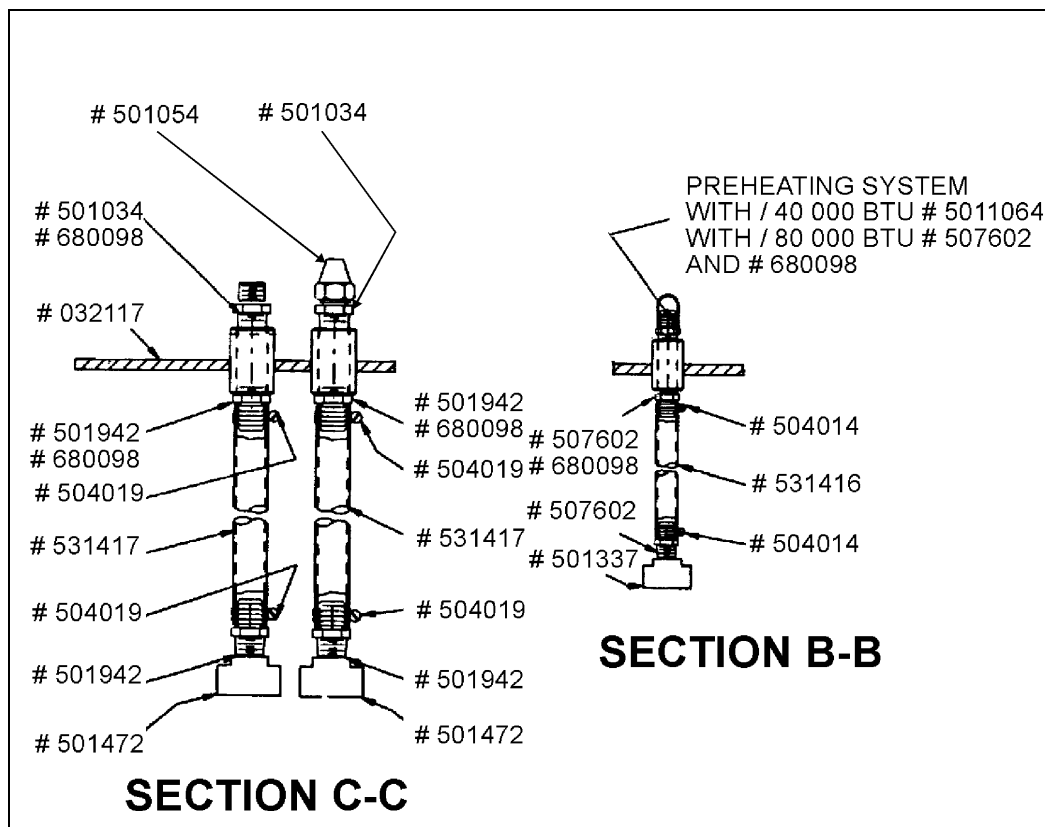


FIGURE 4: PICK-UP (SUCTION) TUBES ASSEMBLY

03022

- Where applicable, install the following adapters on fuel tank control panel : preheater supply line, auxiliary return line (Fig. 5).

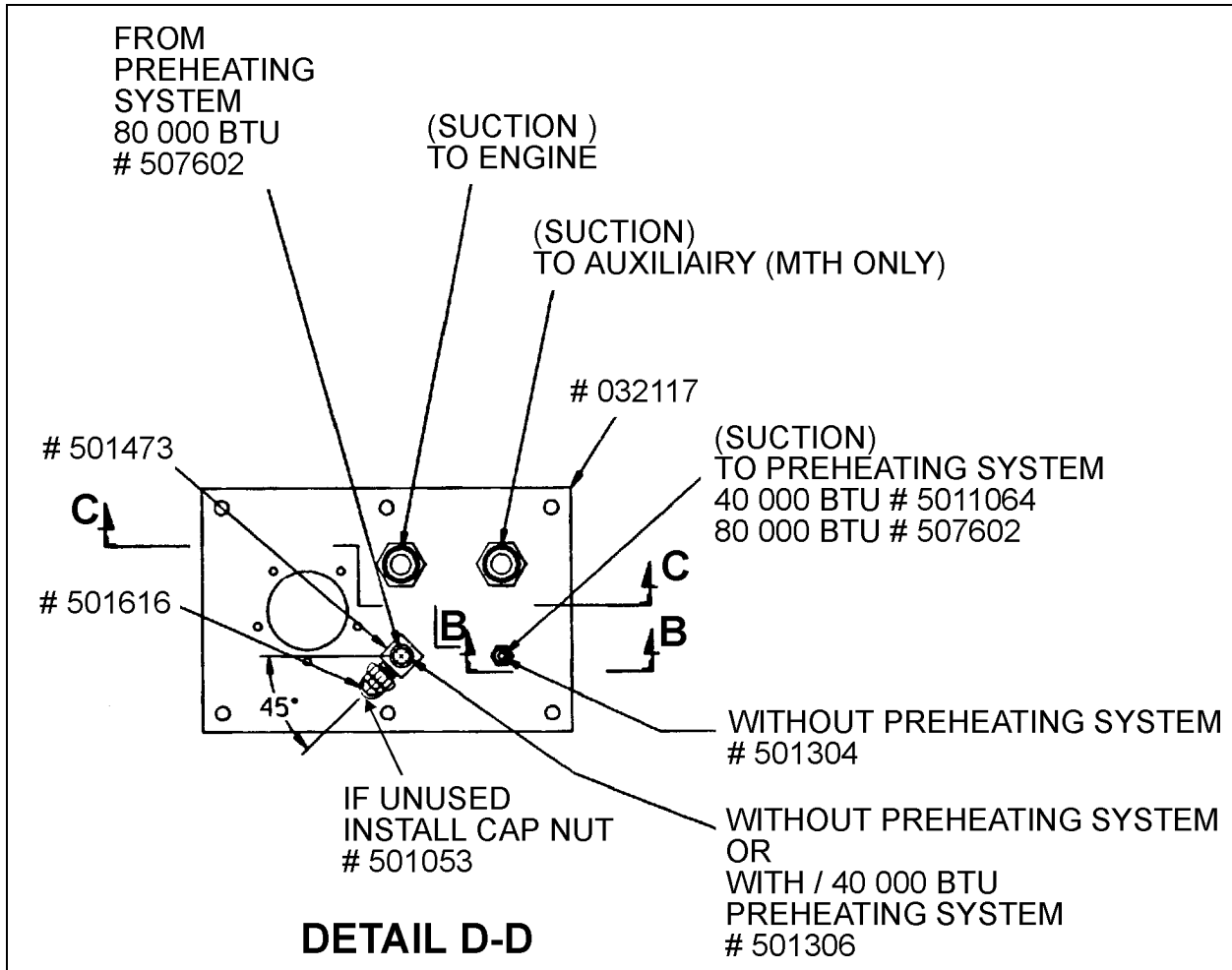


FIGURE 5

03023

INSTALLATION OF THE NEW CONTROL PANEL ON FUEL TANK

Note: Use a Loctite 567™ type sealant on all threads.

- Using new seal and new copper washers (Prévost #031849 and #505512), install new fuel tank control panel (Fig. 6).
- If applicable, assemble preheater supply line, preheater return line, auxiliary supply line and/or auxiliary return line to fuel tank control panel (Fig. 5).
- Install the engine supply line.

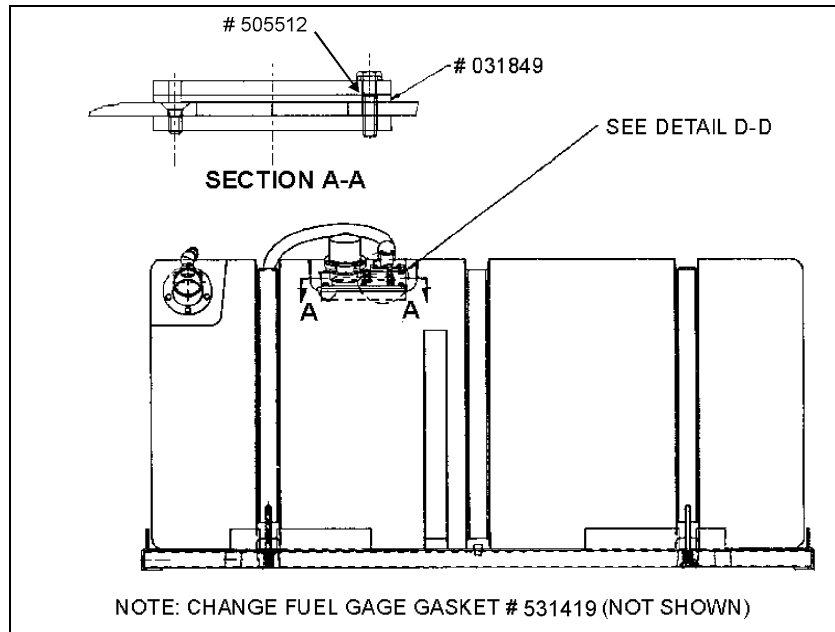


FIGURE 6

03024

4. Assemble fuel gage indicator.
5. If vehicle is not equipped with preheating system:
 - Install plug on "from (Prévost # 501306) and to (Prévost # 501304) preheating system" port (Fig. 5).
- If vehicle is equipped with an Espar (40 000 btu) preheating system:
 - Install plug (Prévost # 501306) on "from preheating system" port (Fig. 5).
6. Replace fuel tank access panel.
7. Refer to the next procedure "Fuel System Priming".

XL AND H3 SERIES VEHICLES

Fuel System Priming

If the vehicle is equipped with the optional priming system

1. Start the priming pump. The switch is located in engine compartment and mounted on a small box above the engine (between the starter button and the starter selector switch).
2. Start the engine and check for leaks.

If the vehicle is not equipped with the optional priming system

1. Unscrew the cap on the priming valve located on the secondary fuel filter.
2. Direct fuel under pressure 25 psi (172 kPa) to the priming valve using a quick coupling.
3. Start the engine and check for leaks.

WARRANTY

This modification is covered by the manufacturer's normal Warranty. We will reimburse you the parts and one hour and a half (1.5) of labor upon receipt a completed A.F.A. form on which you must specify as per "Warranty Bulletin 96-06".

Expiration date: June 1997