

PREVOST


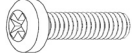
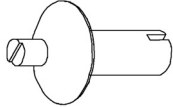
Instruction Sheet

IS-09040

INSULATING "MASTER ID" MULTIPLEX MODULE LOCATED IN FRONT ELECTRICAL COMPARTMENT

MATERIAL

Kit #068158 includes the following parts:

Part No.	Description	Identification	Qty
563295	Master ID, Volvo Multiplex Module		1
900251	Bushing, Rubber		2
502698	Screw, Machine Pan Head Phillips SS NSS M4-0.7 X 16		2
5001438	Rivet, Drive Truss Head Nylon 1/4 X 3/4		2
IS-09040	Instruction Sheet		1
FI-09040	Feuille d'instructions		1

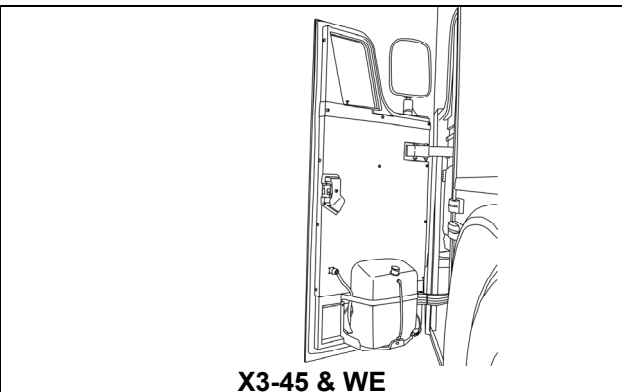
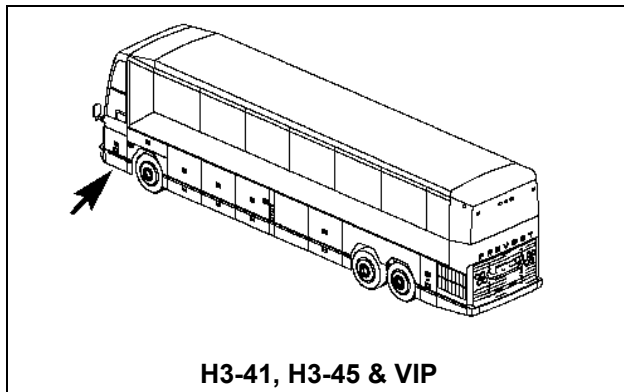
PROCEDURE



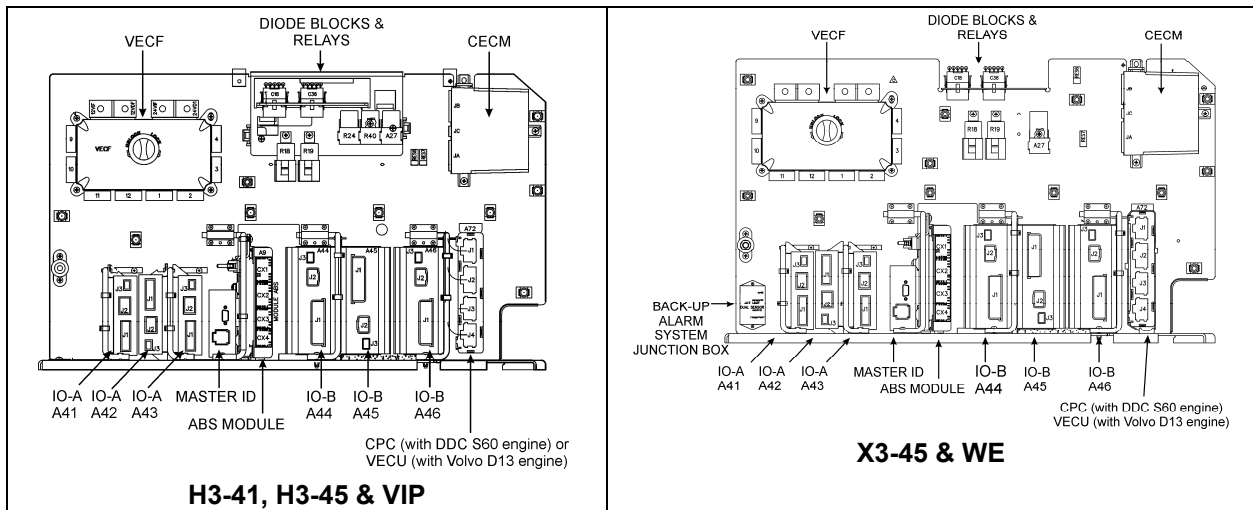
DANGER

Park vehicle safely, apply parking brake, stop engine and set battery master switch(es) to the OFF position prior to working on the vehicle.

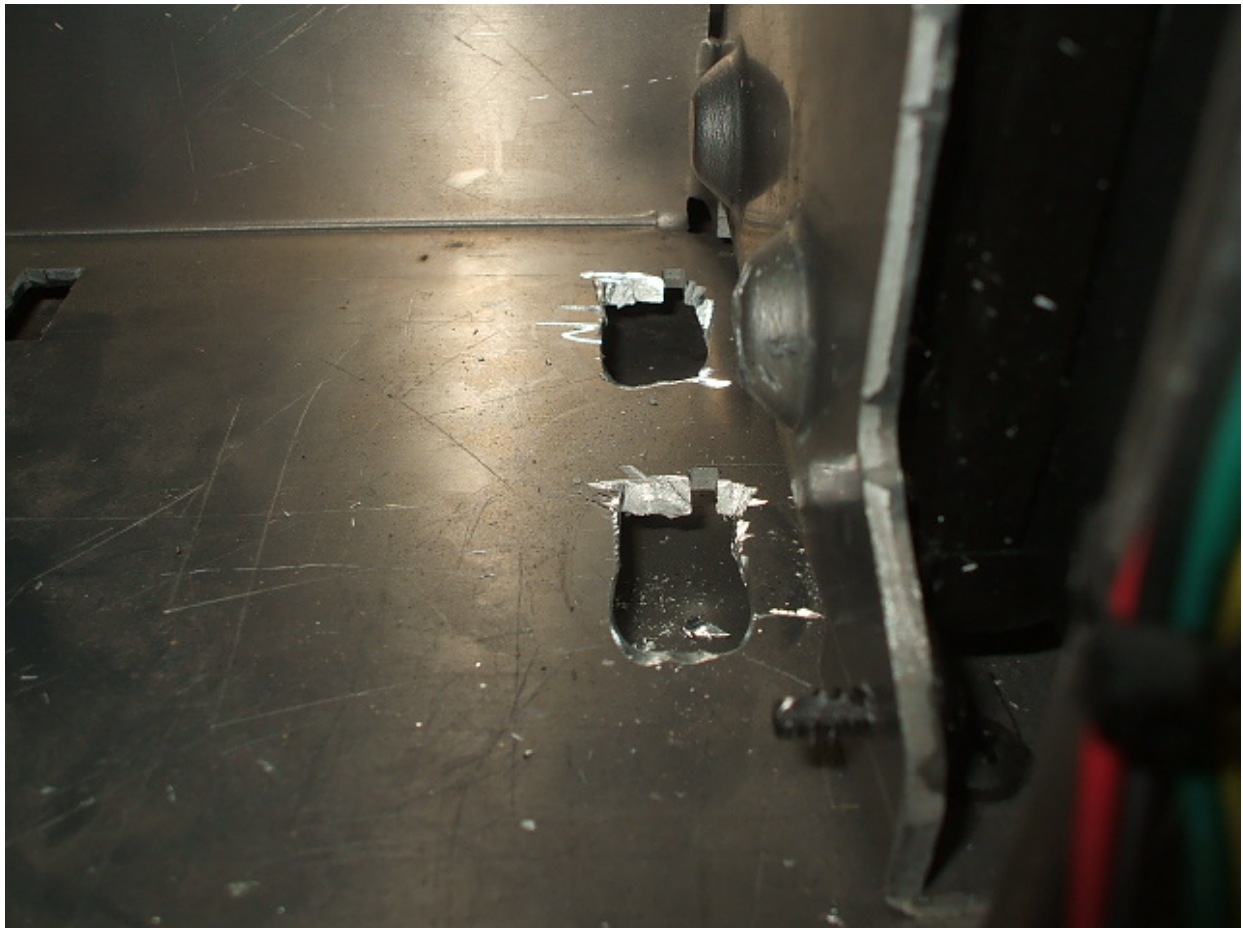
1. Open front electrical and service compartment door.



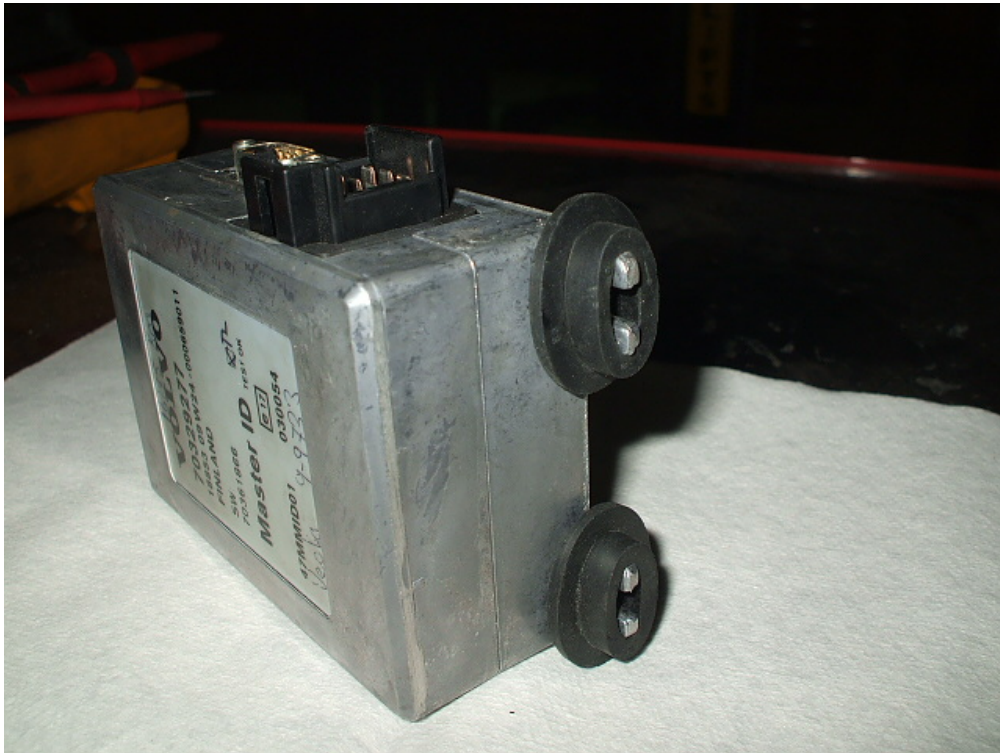
2. Locate and remove "Master ID" multiplex module.



3. Enlarge lower fixing holes.



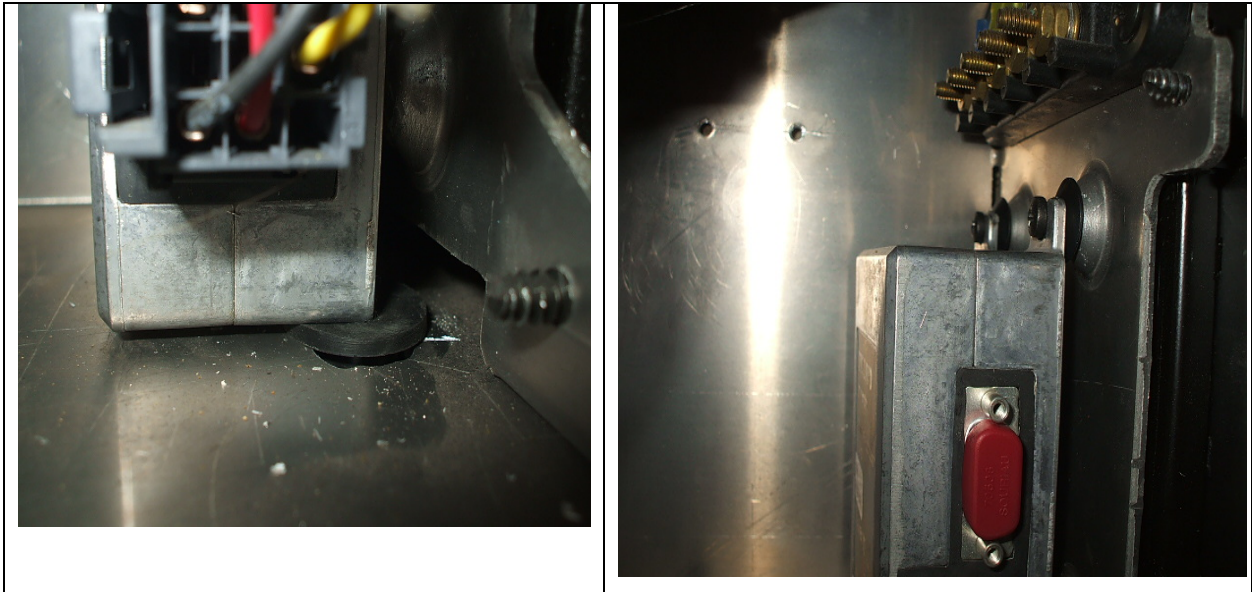
4. Make upper fixing holes larger using a 15/64" drill bit.
5. Slide two rubber bushings (900251) over "Master ID" lower fixing lugs.



6. As shown in the following figure, insert the rivet (5001438) body end into the upper holes then break the stem.



- Secure upper end of “Master ID” module by fastening two new screws (502698) into the rivets.



- Perform a continuity test on “Master ID” module to make sure that electrical insulation is proper.

NOTE

Make sure ground wire is disconnected before performing continuity test.

- Close front electrical and service compartment door.