

# PREVOST

## Instruction Sheet

## IS-15907A

### BENDIX FLR10 AND FLR20 RADAR SENSOR ALIGNMENT TOOL – ASSEMBLY INSTRUCTION

#### APPLICABLE TO US MARKET ONLY

#### MATERIAL

**FLR10** Kit #7770169 (US market only) includes the following parts:

Part No.	Description	Qty
680192	LASER, MAGNETIC TORPEDO	2
680248	FLR10 RADAR SENSOR ADJUSTMENT TOOL	1
IS-15907	Instruction Sheet	1

**FLR20** Kit #7770168 (US market only) includes the following parts:

Part No.	Description	Qty
680192	LASER, MAGNETIC TORPEDO	2
685593	FLR20 RADAR SENSOR ADJUSTMENT TOOL	1
IS-15907	Instruction Sheet	1

#### *NOTE*

*Material can be obtained through regular channels.*

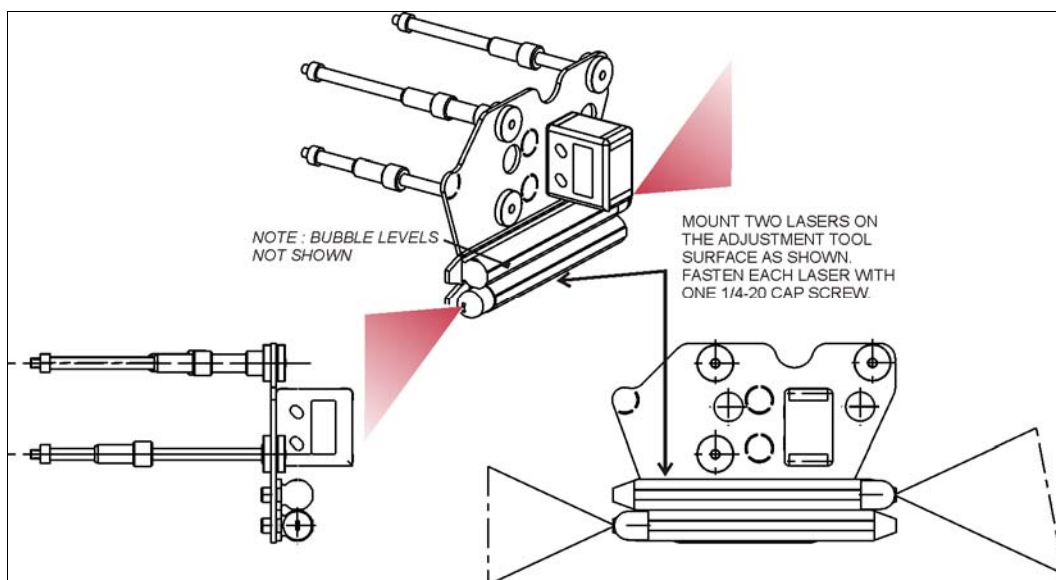
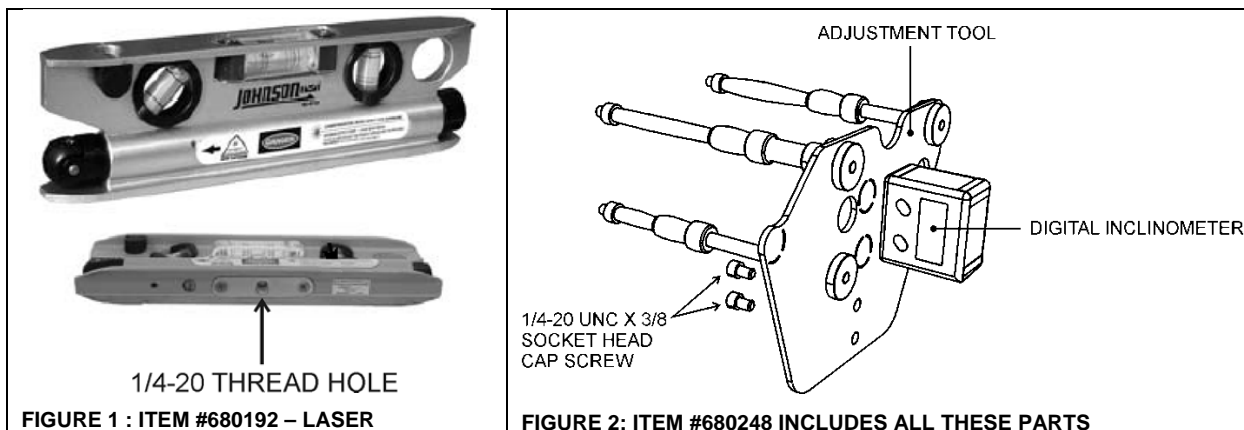


#### **DANGER**

Park vehicle safely, apply parking brake, stop engine. Prior to working on the vehicle, set the ignition switch to the OFF position and trip the main circuit breakers equipped with a trip button. On Commuter type vehicles, set the battery master switch (master cut-out) to the OFF position.

## PART 1 - BENDIX FLR10 RADAR SENSOR (FORMER GENERATION)

### PROCEDURE



1. Mount the lasers horizontally on the adjustment tool as shown on figure 3. Fasten the lasers to the adjustment tool surface using one socket head cap screw  $\frac{1}{4}$ -20 X  $\frac{3}{8}$  per laser.

**REFER TO MI11-06 FOR THE FLR10 RADAR SENSOR ALIGNMENT PROCEDURE**

## PART 2 - BENDIX FLR20 RADAR SENSOR (CURRENT GENERATION)

### PROCEDURE

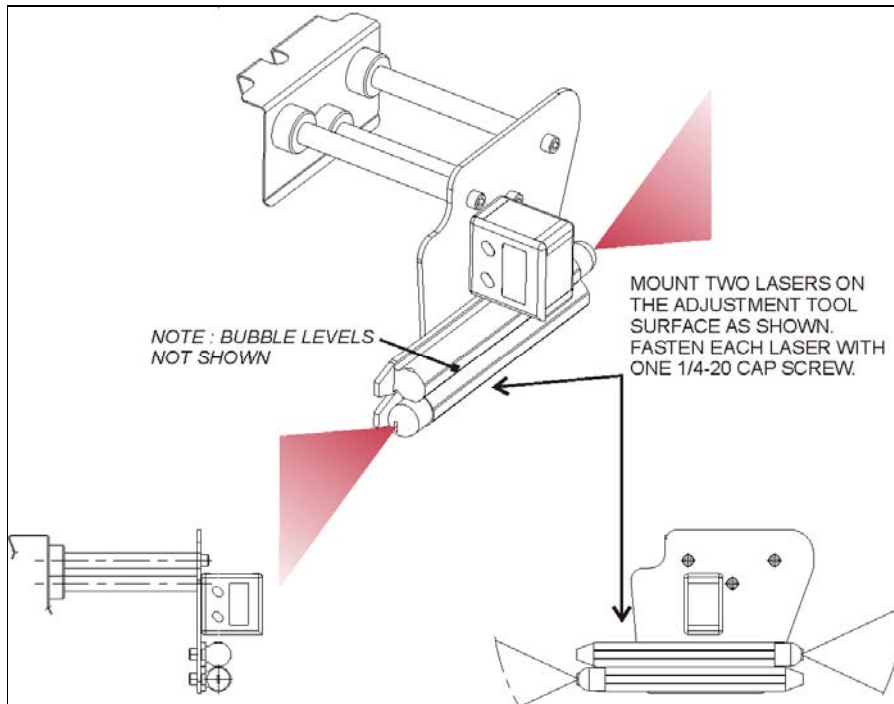
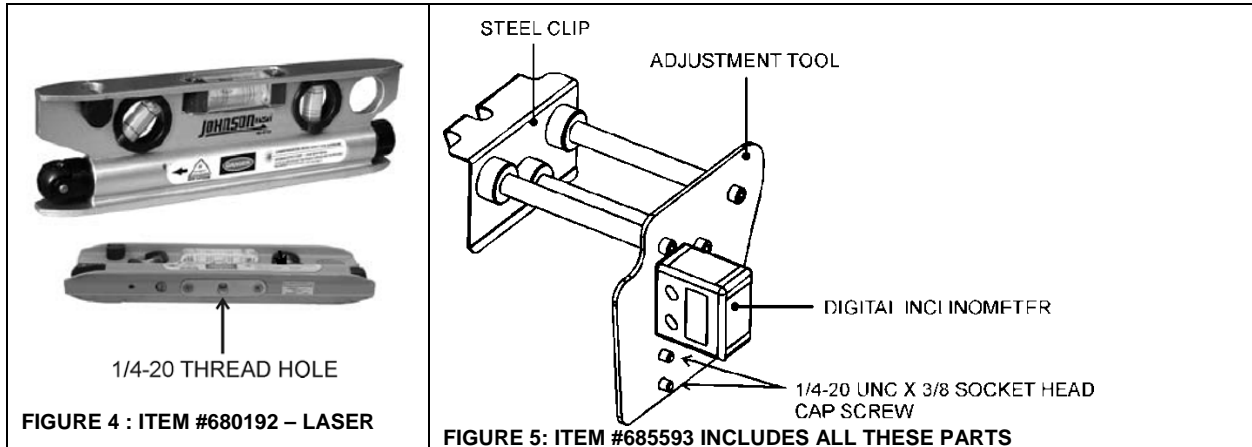


FIGURE 6: TWO LASERS MOUNTED ON THE ADJUSTMENT TOOL

1. Mount the lasers horizontally on the adjustment tool as shown on figure 6. Fasten the lasers to the adjustment tool surface using one socket head cap screw 1/4-20 X 3/8 per laser.

***Refer to MI14-34 for the FLR20 radar sensor alignment procedure***

### PARTS / WASTE DISPOSAL

Discard waste according to applicable environmental regulations (Municipal/State[Prov.]/ Federal)