

SEE VIEW
REAR SUB-FRAME
XL2-45 COACH

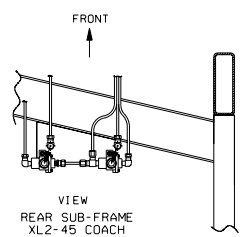
LOW-BUOY
PRESSURE
REGULATOR
90 PSI

TUBE COLOR CODING	
ACTIVE COLOR	CIRCUIT
→ → RED	SECONDARY
→ → GREEN	PRIMARY & SUPPLY
→ → YELLOW	PARKING BRAKE
→ → BLUE	SUSPENSION
→ → BLACK	ACCESSORIES

BALLOON	PIPE
• 1	3/8" O.D. BLUE
• 2	1/2" O.D. BLUE
—	STD PIPING
—	OPTIONAL PIPING

NOTE:
CONTROL VALVE OPT. "LOW-BUOY", "A" OR "B" SETTING:
POSITION "A": VALVE IS OPEN,
AIR FLOW BETWEEN SUPPLY (S) AND
DELIVERY (D), LOW-BUOY IS NOT IN FUNCTION.

POSITION "B": VALVE CLOSED,
AIR DOESN'T FLOW BETWEEN SUPPLY (S) AND
DELIVERY (D), LOW-BUOY IS IN FUNCTION.



XL2-45 COACH,
ENGINE 2002 WITH
FRONT BEAM AXLE

WITH OPTION FRONT KNEELING
& HIGH-BUOY COMBINATION
D140301 P3 REV. A

DATE : 2003/04