

FUEL PRO® 382

APPLICATIONS

- Any on-highway diesel engine with flow rates up to 180 gph

ELIMINATE UNNECESSARY CHANGES & MAINTENANCE

- All-in-one fuel filter, water separator, and fuel pre-heater for heavy duty on-highway applications
- Clear cover provides instant visual indication of filter life
- **“SEEING IS BELIEVING”**®
See when NOT to change the filter
- Extended filter change intervals
- Enhanced fuel system troubleshooting procedures
- Biodiesel compatible to B20

COLD WEATHER OPTIONS

- 12VDC Pre-heater — Uses ignition switch to heat up fuel prior to running the engine
- 120VAC Overnight heater — Prevents gelling while parked overnight
- Coolant heat — Keeps fuel heated while operating on highway

MODELS & OPTIONS

- Base Model - Unheated
- Coolant Heat
- Electric Pre-heater Options
 - 12VDC
 - 120VAC Overnight
- Water-In-Fuel (WIF) sensor

FILTER ELEMENT

Patented design for extended life and maximum filtration performance

SELF-PRIMING PORT

Remove the cap, pour in fuel and restart the engine with clean “filtered” fuel

CLEAR COVER

See when NOT to change the filter

LOW-RESTRICTION CHECK VALVE

Eliminates drainback

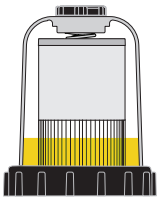
ALUMINUM CONSTRUCTION

Lightweight and corrosion resistant

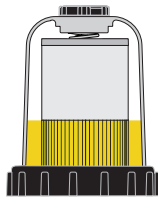
DRAIN VALVE



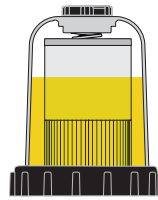
“SEEING IS BELIEVING”[®]



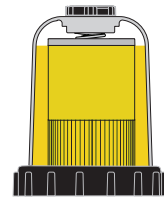
When new, the fuel level in the filter will be very low with minimal restriction. As the filter is used, contaminants collect on the filter from the bottom up. Fuel rises on the filter indicating remaining filter life.



Fuel level increases in clear cover. As contaminants collect on the filter, the fuel rises to a non-contaminated section of the filter, providing optimal filtration while maintaining lowest restriction.

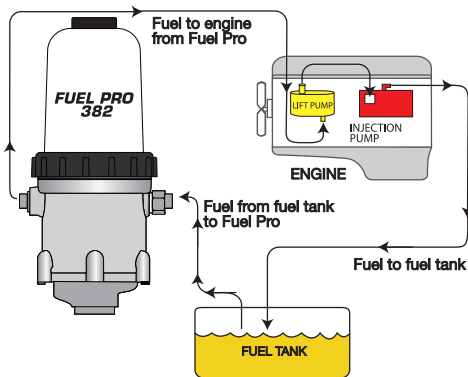


Fuel level at filter wrap level. Even though the fuel level is now more than half of the filter element, the fuel is still flowing through clean media at minimal restriction levels. The filter still has significant life remaining.



The filter element is now completely covered by fuel. At this point, all of the media’s surface area is utilized. Restriction is increasing and the filter element should be changed at the next scheduled maintenance interval.

TYPICAL INSTALLATION



HOW IT WORKS

- Fuel from the tank enters the fuel processor body.
- Large contaminants and “free” water are separated and remain in the body.
- Fuel rises into the clear cover area.
- Contaminants and emulsified water are captured by the filter media.
- Fuel level rises to maintain a fuel path through clean filter media (path of least resistance).
- Clean, water free, fuel exits the fuel processor to the engine fuel injection system.

PART NUMBERS TO ORDER

Part Number	Description
382950	Unheated
382930	Coolant Heat
382932	Coolant Heated 12VDC Pre-heater
382952	Unheated with 12VDC Pre-heater

Contact DAVCO Customer Service to obtain the part number for the DAVCO Fuel Pro that best fits your application.

UNIVERSAL APPLICATIONS

Use Fuel Pro 382 with heavy duty diesel engines that have a maximum fuel flow up to 180 gallons per hour.

DISTRIBUTED BY: