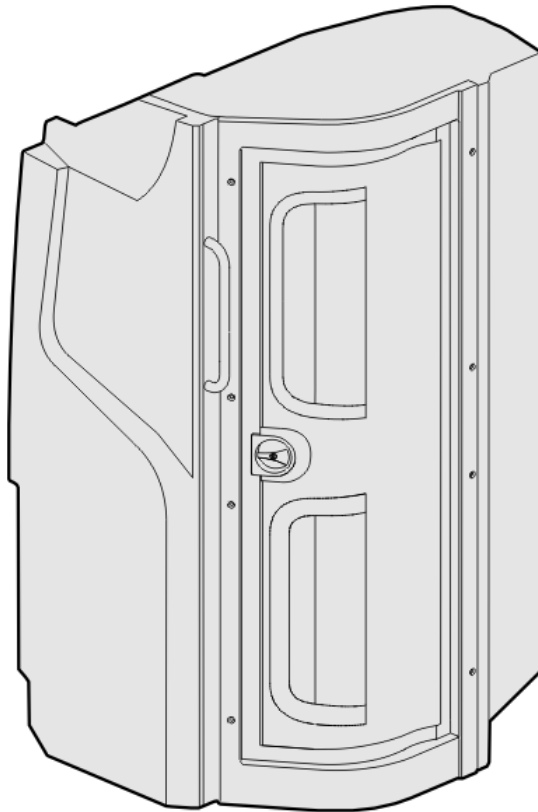


Driver's Handbook

Toilet

9700 USCAN



VOLVO

Foreword

This manual contains information concerning the operation and function of the bus toilet. The information in this manual applies to vehicles built in 2015 and later. Please keep this manual in the vehicle at all times.

Note: Illustrations are used for reference only and may differ slightly from the actual vehicle. However, key components are represented as accurately as possible..

The National Highway Traffic Safety Administration (NHTSA) and Volvo Trucks North America should be informed immediately if you believe that the vehicle has a defect that could cause a crash, injury or death.

Contact NHTSA by calling the Auto Safety Hotline at 1 (888) 327-4236, by writing to NHTSA, U.S. Department of Transportation, Washington, DC 20590, by TTY at 1 (800) 424-9153, or visit their website at www.nhtsa.gov

Volvo Bus Corporation

Göteborg, Sweden

Order number: 89292166

©2017 Volvo Bus Corporation, Göteborg, Sweden

All rights reserved. No part of this publication may be reproduced, stored in retrieval system, or transmitted in any forms by any means, electronic, mechanical, photocopying, recording or otherwise, without the prior written permission of Volvo Bus Corporation

Contents

Introduction	1
Toilet general view	1
Decals in the cubicle	1
Toilet operation	2
Activation of the cubicle	2
Flushing of the toilet	2
Filling and draining of the tanks	3
Signals of toilet occupied/vacant	4
Interior light	5
Extractor fan	5
Emergency alarm	5
Cleaning and hygiene.....	6
Cubicle and toilet bowl	6
Gel dispenser.....	6
Trash bin	6
Toilet paper dispenser	6
Maintenance	7
Daily and weekly routine	7
Winterization.....	8

Safety Information

IMPORTANT: Before driving this vehicle, be certain that you have read and that you fully understand each and every step of the driving and handling information in this manual. Be certain that you fully understand and follow all safety warnings.

IT IS IMPORTANT THAT THE FOLLOWING INFORMATION BE READ, UNDERSTOOD AND ALWAYS FOLLOWED.

The following types of advisories are used throughout this manual:



DANGER

Danger indicates an unsafe practice that could result in serious personal injury or death. A danger advisory banner is in **white** type on a **black** background with a **black** border.



WARNING

Warning indicates an unsafe practice that could result in personal injury. A warning advisory banner is in **black** type on a **gray** background with a **black** border.



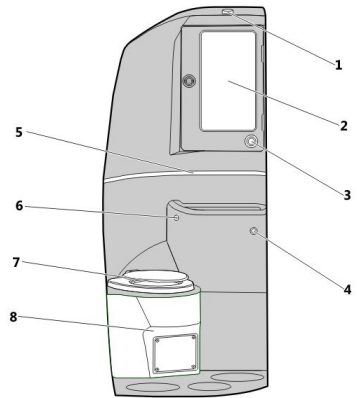
CAUTION

Caution indicates an unsafe practice that could result in damage to the product. A caution advisory is in **black** type on a **white** background with a **black** border.

Note: Note indicates a procedure, practice, or condition that must be followed in order for the vehicle or component to function in the manner intended.

Toilet general view

- 1 Spot lamp
- 2 Mirror
- 3 Gel dispenser
- 4 Alarm button
- 5 Ambient light
- 6 Flash button
- 7 Toilet seat
- 8 Toilet bowl.



W0119191

Decals in the cubicle

- 1 Do not use standing up position; do not throw strange objects in the toilet bowl
- 2 No smoking
- 3 Door lock
- 4 Toilet flush
- 5 Alarm button
- 6 Gel dispenser
- 7 Trash bin.



W0119192

2 Toilet operation

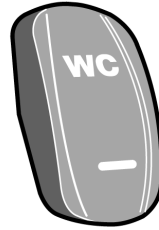
Activation of the cubicle

To activate the cubicle, turn on the toilet switch on the dashboard.



CAUTION

In order to protect the electrical system, ensure that the toilet switch is OFF when starting or jump starting the vehicle.



T3018183

Flushing of the toilet

Pushing the flush button flushes the toilet. If a further flush is required, wait for the flush cycle to complete, and then press the button again. Also, the toilet flushes automatically if the cubicle is vacated without having done the flush before.

When the septic tank is full, a dashboard LED will illuminate and the “Occupied” lamp will signal. The toilet is now out of use until this tank is drained.



W0120405

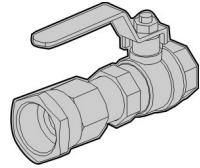
When the water tank is empty, a dashboard LED will illuminate and the “Occupied” lamp will signal. The toilet is now out of use until this tank is refilled.



W0120406

Filling and draining of the tanks

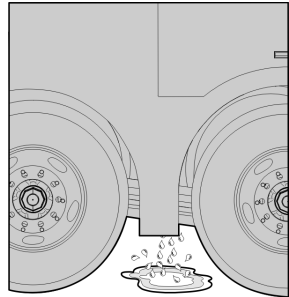
To fill the water tank, use the hose connector located in the septic tank compartment.



W0120407

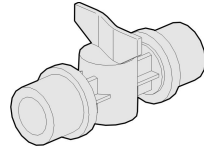
You will notice that the water tank is full when the vent pipe starts to leak.

Note: Pay attention to the leaking of the vent pipe in order to avoid waste of water.



W0120408

To drain the water tank, use the draining valve located behind the septic tank.



W0119194

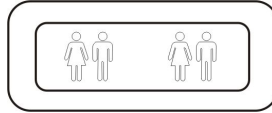
To drain the septic tank, firmly pull the draining valve located underneath the tank.

4 Toilet operation

Signals of toilet occupied/vacant

Signals outside the toilet

The indicator lamp outside the toilet indicates whether the toilet is occupied (red) or vacant (green).



T0015272

Signals in the dashboard

There is also an occupied signal in the dashboard. When the toilet is vacant, there is no signal.



T8061456

Signals in the passenger information display

In this display, the occupied signal is “WCX”, while the vacant signal is WC with a man and a woman.



W0120414

Interior light

The ambient light and the spot lamp will turn on when the cubicle is occupied and turn off when it is vacated.

Extractor fan

The extractor fan runs at half speed when the cubicle is vacant and switches to full speed when it is occupied.

Emergency alarm

When the alarm button is pressed, the toilet user will hear a buzzer. In the dashboard, it can be seen the toilet occupied signal blinking.

6 Cleaning and hygiene

Cubicle and toilet bowl

To clean the cubicle, use a mild detergent.
For the toilet bowl, use a mild anti-bacterial detergent and a soft brush.



CAUTION

Do not use abrasives of any kind to clean the cubicle or the toilet bowl, since they will damage the surfaces.

Gel dispenser

To fill the dispenser, open the mirror door, open the dispenser and fill it with antibacterial gel.

Trash bin

It is recommended to cover the trash bin with a plastic bag in order to facilitate its emptying and keep it clean and free of odor. Do not throw the toilet paper used into the trash bin. The trash bin is not designed for this purpose.

Toilet paper dispenser

The toilet paper used must be placed in the toilet bowl, so it is recommended to use only highly biodegradable toilet paper.



CAUTION

Do not use domestic grade toilet paper, since it could block the system.

Daily and weekly routine

Daily routine

Prior to the vehicle entering service, the septic tank should be charged with an additive to sanitize it. To apply the additive:

- 1 Ensure that the septic tank is empty.
- 2 Check that the draining valve is closed.
- 3 Check that the water tank is full.
- 4 Turn on the toilet switch (see “Activation of the cubicle”, page 2).
- 5 Drop the additive into the bowl and press the flush button.

Note:

- (1) Use the quantity of additive recommended by the supplier.
- (2) It is recommended that the tanks are empty at the end of each day.

Weekly routine

Check the operation and/or appearance of the following:

- Extractor fan
- Doors hinges
- Toilet seat
- Doors locks
- Gel dispenser
- Toilet paper dispenser
- Lights
- Alarm button
- Electrical and plumbing connections behind the mirror door.

8 Maintenance

Winterization

If the vehicle is to be parked in zero or sub-zero temperatures, it is imperative that the tanks are completely drained.

During winter months (temperatures below 0°C or 32 °F), you should place non-toxic propylene glycol in both the water and the septic tanks, in order to prevent freezing.

Note:

- (1) Use the proportion of propylene glycol recommended by the supplier. The capacity of the tanks are 110 liters for the water tank and 100 liters for the septic tank.
- (2) No warranty claims will be accepted on any winter damaged parts.



CAUTION

Do not use ethylene glycol instead of propylene glycol. Ethylene glycol can damage some rubber components.



WARNING

Do not use automotive antifreeze instead of propylene glycol. The automotive antifreeze uses to be toxic, and can cause health problems.

VOLVO

Volvo Bus Corporation

Göteborg, Sweden