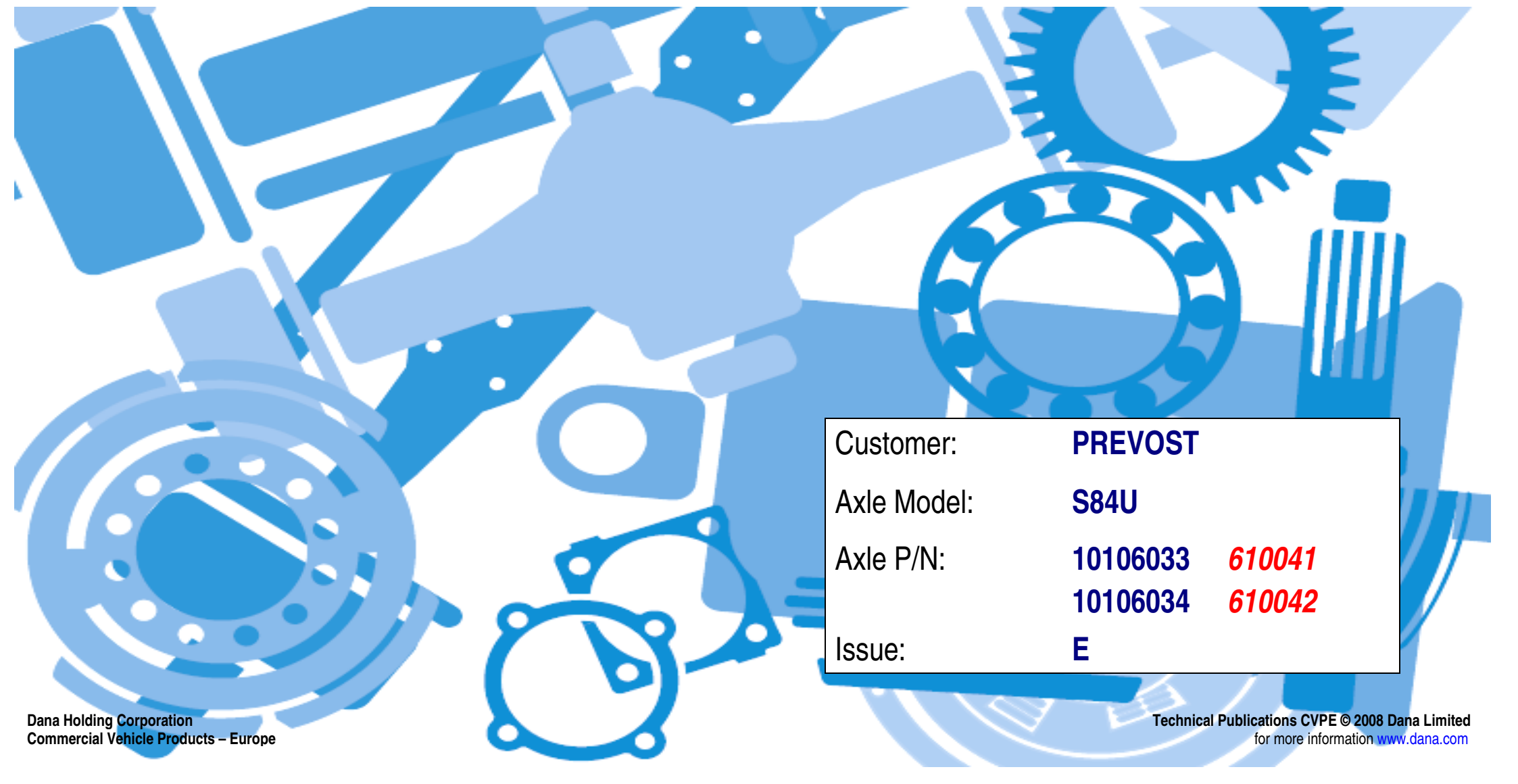


SPEC00002407

ILLUSTRATED PART LIST



Customer:	PREVOST
Axle Model:	S84U
Axle P/N:	10106033 <i>610041</i>
	10106034 <i>610042</i>
Issue:	E

The description, testing procedures, and specifications contained in this parts / service publication were current at time of writing. This manual will not be updated. If in doubt about any aspect of maintenance or servicing of the axle please contact the vehicle builder or our service department directly.

SPICER® products are subject to continuous development and we reserve the right to modify procedures and to make changes in specifications at any time without prior notice and without incurring in any obligation.

The recommendations of the vehicle manufacturer should be considered as the primary source of service information regarding this **SPICER**® product. This manual is intended to be used as a supplement to such information.

Any references to brand names in this publication are made simply as an example of the types of tools and materials recommended for use and, as such, should not be considered as an endorsement.

This manual is the property of **Commercial Vehicle Products – Europe**, a division of **Dana Holding Corporation**, and may not be copied or disseminated without prior agreement of **Commercial Vehicle Products– Europe**, a division of **Dana Holding Corporation**.

Commercial Vehicle Products – Europe, a division of **Dana Holding Corporation**, recommends following all manufacturers recommendations for the proper handling and disposal of lubricants and solvents. For further information please contact the lubricants and solvents supplier.

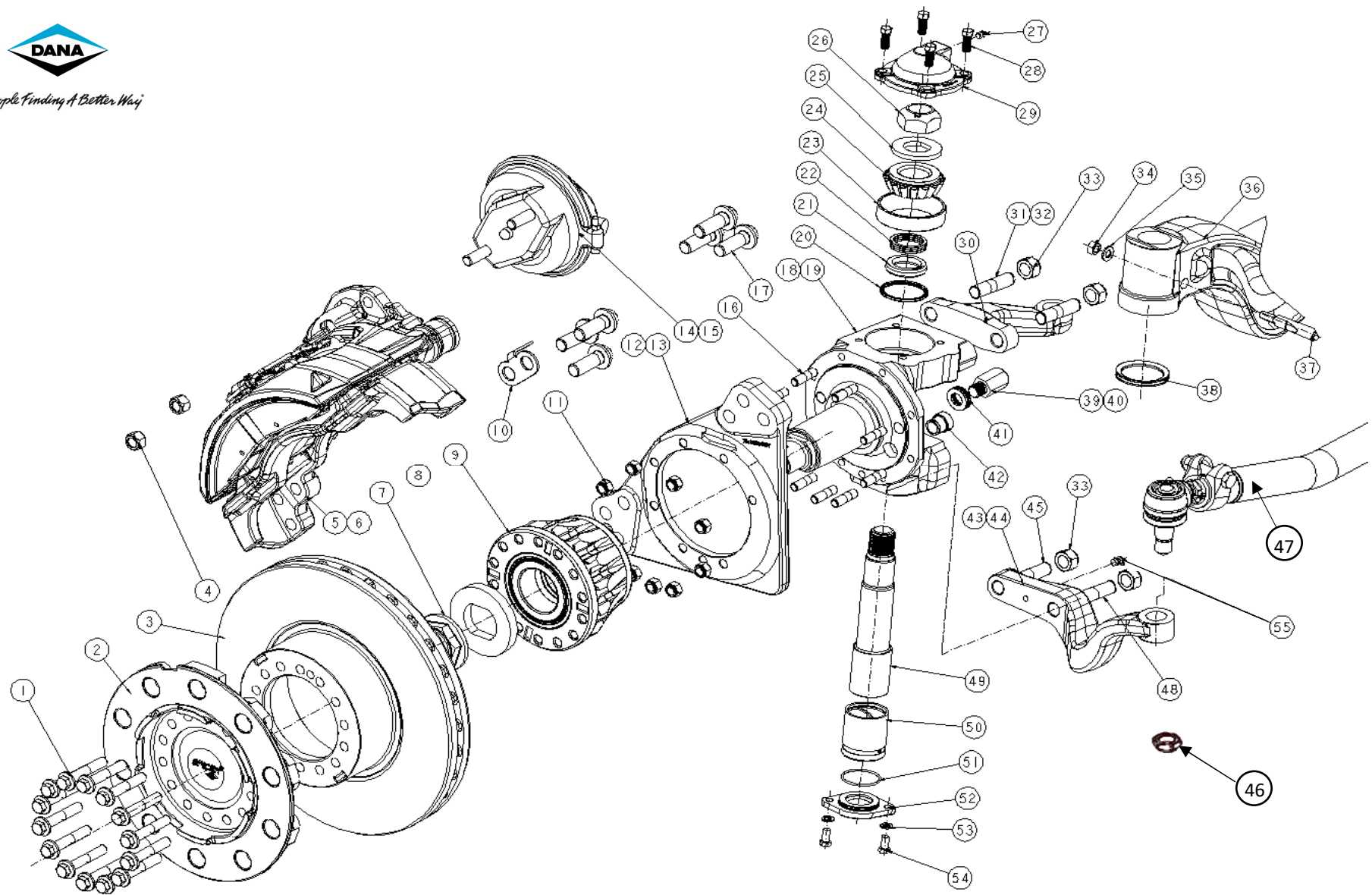
EVERY EFFORT HAS BEEN MADE TO ENSURE THE ACCURACY OF THE INFORMATION CONTAINED WITHIN THIS MANUAL.

HOWEVER, COMMERCIAL VEHICLE PRODUCTS – EUROPE, A DIVISION OF DANA HOLDING CORPORATION, MAKES NO EXPRESSED OR IMPLIED WARRANTY OR REPRESENTATION BASED ON THE ENCLOSED INFORMATION.

Last Modification	Approved by	Date	Issue	Eng. Change
Released	P.S.	31/07/18	A	EW050814
Customer Part Nos. added. Added note 3 for Torque Hex Nut (Tie Rod assy, item 47).	P.S. // E.A.	17/08/18	B	EW051603
Item 10 WEAR INDICATOR replaced, was F5169/116, now 10131840.	P.S. // E.A.	12/03/19	C	EW058615
NOTE 3 modified, now 170Nm for both Tightening torque hexagon nut (ITEM 47)	P.S. // E.A.	13/03/19	D	EW056729
(Torque chart) Item 33 SL228/21 updated type 3/4" was by mistake 3/8".	P.S. // E.A.	01/04/19	E	EW060540



People Finding A Better Way[®]



Dana Holding Corporation
Commercial Vehicle Products – Europe

Technical Publications CVPE © 2008 Dana Limited
for more information www.dana.com

S84U 10106033 & 10106034 Part List & Tightening Torques

Item	Part Number		Description	Qty ⁰
	10106033	10106034		
1	F5064/55		Flanged Bolt	28
2	F4974/28		Hub	2
3	F4974/88		Brake Disc	2
4	10031188		Nut – Self Lock	4
5	SM486/66K	SM486/69K	Brake L.H.	1
6	SM486/67K	SM486/69K	Brake R.H.	1
7	F4567/77		Stake Nut	2
8	F4567/30		Collet Washer	2
9	10044573		Hub Bearing	2
10	10131840		Wear Sensor Clip	2
11	SL228/6		Nut – Self Lock	16
12	F5218/87		Brake Mounting Bracket L.H.	1
13	F5218/86		Brake Mounting Bracket R.H.	1
14	SM487/100K		Actuator L.H.	1
15	SM487/99K		Actuator R.H.	1
16	SL785/110		Stud	16
17	833175		Brake fixing - Bolt	12
18	F4978/3		Knuckle L.H.	1
19	F4978/2		Knuckle R.H.	1
20	F4477/32		Oil Seal ¹	2
21	F4477/19		Sleeve - Knuckle Bearing ¹	2
22	4493/119		Shim .005" ¹	8
	4493/119A		Shim .010" ¹	8
	4493/119B		Shim .015" ¹	8
	4493/119D		Shim .008" ¹	4
	4493/119E		Shim .006" ¹	2
23	49849		Bearing Cup ¹	2
24	833051		Bearing Cone ¹	2
25	7433/30		Washer (Collet) ¹	2
26	F4477/15		Nut – Self Lock ¹	2
27	SL1000/1		Lub Nipple (Straight)	2
28	SL554/5		Screw	8

Item	Part Number		Description	Qty ⁰
	10051685	10051684		
29	F4651/16		Cap - Knuckle Top	2
30	10049707		Top Steerin Lever	1
31	SL738/13		Top Steering Lever - Stud L.H.	2
32	SL738/23		Top Steering Lever - Stud R.H.	2
33	SL228/21		Nut - Self Lock	8
34	SL221/5		Drawkey - Nut ¹	2
35	SL241/5		Drawkey - Washer ¹	2
36	F4865/1		Beam - Axle	1
37	F4722/57		Drawkey ¹	2
38	F4921/32		"V" Ring Seal ¹	2
39	F4693/44H		Back Lock - Stop Bolt	2
40	7786/44B		Front Lock - Stop Bolt	1
41	SL246/151		Stop bolt - Washer	4
	SL246/152		Stop bolt - Washer	4
	SL246/153		Stop bolt - Washer	4
	F4668/523		ABS Sensor - Bush	2
43	10049709		Bottom Steering Lever L.H.	1
44	10049710		Bottom Steering Lever R.H.	1
45	SL738/15		Bottom Steering Lever - Stud	2
46	F5044/15		Nut - Self Lock (Tie Rod)	2
47	10102148		Socket & Tie Rod Assy ³	1
	10106094		Socket Assy R.H. ²	1
	10106093		Socket Assy L.H. ²	1
	10106078		Tie Rod ²	1
48	SL738/20		Bottom Steering Lever - Stud	2
49	F4477/14		Kingpin ¹	2
50	F4477/20A		Kingpin - Bushing ¹	2
51	R3937/149		"O" Ring Seal ¹	2
52	F4477/34		Cap - Knuckle Bottom	2
53	ML5710/1		Washer	4
54	SL553/3		Screw	4
55	SL1000/65		Lub Nipple	2

NOTES:

- ⁰ Quantities listed are for complete axle unit
- ¹ Available as a Service Kit: 10283/1; 10283/2; 10283/3 & 10283/4
- ² Comprising tie rod assembly: Item # 47 (see chart for specific part number)
- ³ For Socket & Tie Rod Assy: Tightening torque of hexagon nut: 170±10Nm

ADDITIONAL INFORMATION (AI):

- A11 Lubrication Manual **613511**
- A12 Service Manual Disc Brake SN6.../SN7.../SK7...NA7... **613512**

Item	Part Number	Description	Type	Torque (N·m)	Torque (ft·lbs)
1	F5064/55	Flanged bolt	M14 X 1.5	236 - 260	174 - 192
4	10031188	Nut – Self Lock	M16 x 1.5	180 - 210	133 - 155
7	F4567/77	Stake Nut	1 3/4" - 8 UN	780 - 849	575 - 626
11	SL228/6	Nut – Self Lock	1/2" - 20 UNF	115 - 140	85 - 103
17	833175	Brake fixing - Bolt	M20 x 1.5	475 - 533	350 - 393
26	F4477/15	Nut – Self Lock	1 3/8" - 12 UNF	678 - 949	500 - 700
28	SL554/5	Screw	7/16" - 20 UNF	69 - 84	51 - 62
33	SL228/21	Nut - Self Lock	3/4" - 16 UNF	386 - 427	285 - 315
34	SL221/5	Drawkey - Nut ¹	7/16" - 20 UNF	69 - 84	51 - 62
39	F4693/44H	Back Lock - Stop Bolt	3/4" - 16 UNF	115 - 140	85 - 103
40	7786/44B	Front Lock - Stop Bolt			
46	F5044/15	Nut - Self Lock (Tie Rod)	M24 x 1,5	210 - 230	155 - 170
54	SL553/3	Screw	3/8" - 24 UNF	35 - 43	26 - 32



Dana Holding Corporation

Commercial Vehicle Products – Europe

Dana Automoción S.A.

Polígono Industrial de Landaben, Calle E

31012 Pamplona / Spain

TEL (+34-948) 289 100 FAX (+34-948) 188 164

APPLICATION POLICY

Capability ratings, features and specifications vary depending upon the model type of service. Applications approvals must be obtained from Commercial Vehicle Products - Europe. We reserve the right to change or modify our product specifications, configurations, or dimensions at any time without notice.

People Finding A Better Way[®]