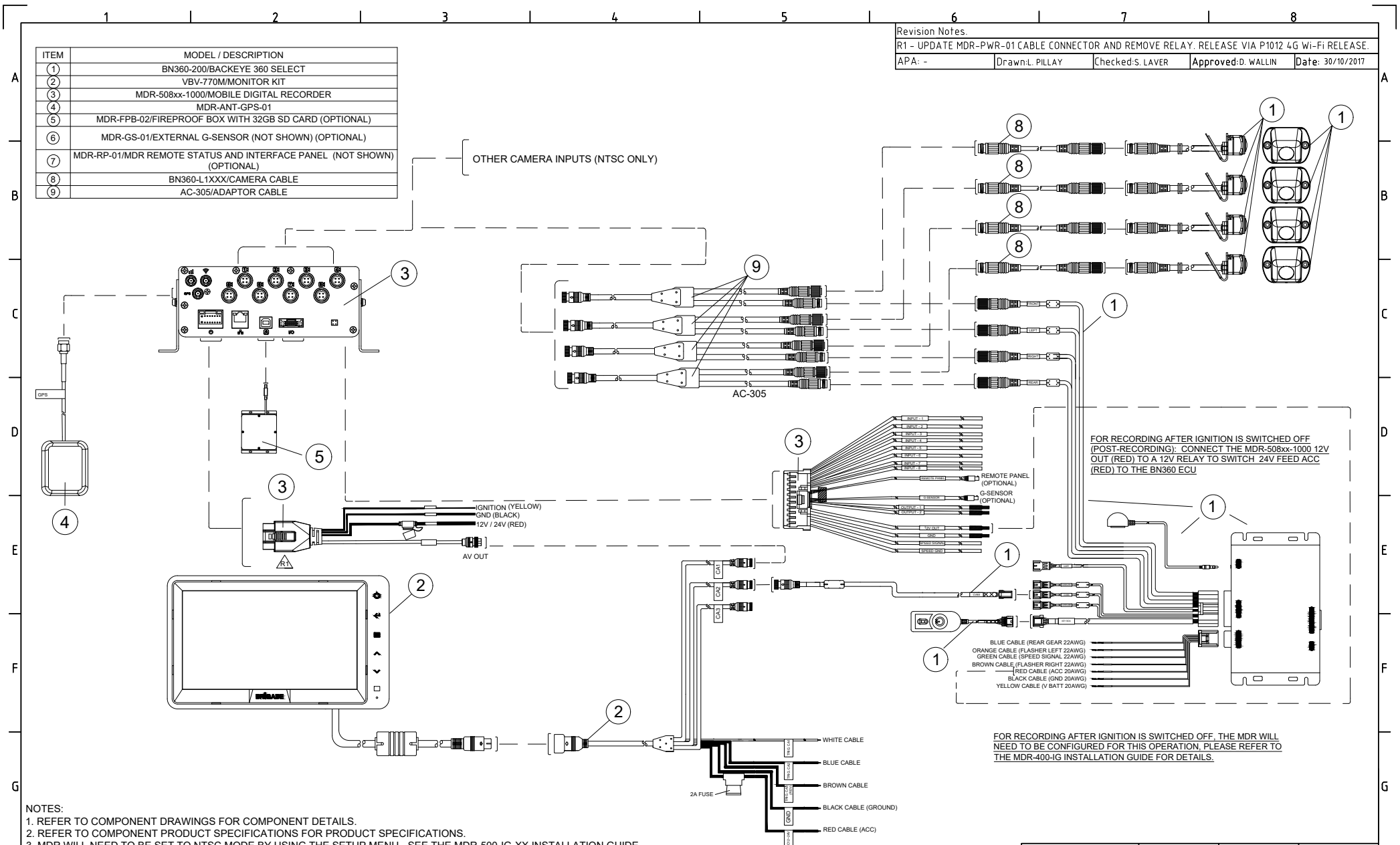


ITEM	MODEL / DESCRIPTION
①	BN360-200/BACKEYE 360 SELECT
②	VBV-770M/MONITOR KIT
③	MDR-508xx-1000/MOBILE DIGITAL RECORDER
④	MDR-ANT-GPS-01
⑤	MDR-FPB-02/FIREPROOF BOX WITH 32GB SD CARD (OPTIONAL)
⑥	MDR-GS-01/EXTERNAL G-SENSOR (NOT SHOWN) (OPTIONAL)
⑦	MDR-RP-01/MDR REMOTE STATUS AND INTERFACE PANEL (NOT SHOWN) (OPTIONAL)
⑧	BN360-L1XXX/CAMERA CABLE
⑨	AC-305/ADAPTOR CABLE

Revision Notes:

R1 - UPDATE MDR-PWR-01 CABLE CONNECTOR AND REMOVE RELAY. RELEASE VIA P1012 4G Wi-Fi RELEASE.

APA: - Drawn: L. PILLAY Checked: S. LAVER Approved: D. WALLIN Date: 30/10/2017



OTHER CAMERA INPUTS (NTSC ONLY)

AC-305

FOR RECORDING AFTER IGNITION IS SWITCHED OFF (POST-RECORDING): CONNECT THE MDR-508xx-1000 12V OUT (RED) TO A 12V RELAY TO SWITCH 24V FEED ACC (RED) TO THE BN360 ECU

FOR RECORDING AFTER IGNITION IS SWITCHED OFF, THE MDR WILL NEED TO BE CONFIGURED FOR THIS OPERATION. PLEASE REFER TO THE MDR-400-IG INSTALLATION GUIDE FOR DETAILS.

- NOTES:
- REFER TO COMPONENT DRAWINGS FOR COMPONENT DETAILS.
 - REFER TO COMPONENT PRODUCT SPECIFICATIONS FOR PRODUCT SPECIFICATIONS.
 - MDR WILL NEED TO BE SET TO NTSC MODE BY USING THE SETUP MENU - SEE THE MDR-500-IG-XX INSTALLATION GUIDE.
 - BN360-LXXX CABLE LENGTH WILL BE DEPENDANT ON APPLICATION.
 - VBV-L4XX CABLE REQUIRED TO CONNECT TO MONITOR DEPENDING ON APPLICATION.
 - REFER TO MDR-400-IG INSTALLATION GUIDE AND BN360 INSTALLATION GUIDE FOR INSTALLATION, CALIBRATION & CONFIGURATION OF THE SYSTEM.
 - TRIGGER CONNECTIONS DEPENDENT ON APPLICATION.

PROPRIETARY NOTICE
THIS DESIGN AND TECHNICAL INFORMATION APPEARING ON THIS DRAWING IS THE PROPERTY OF BRIGADE ELECTRONICS, AND IS DISCLOSED IN CONFIDENCE. IT IS NOT TO BE COPIED, REPRODUCED, REVEALED TO OR EXPROPRIATED BY OTHERS, EITHER IN WHOLE OR IN PART WITHOUT THE EXPRESS WRITTEN CONSENT OF BRIGADE ELECTRONICS.



Assembly Pt Approval -	Approved by B. JOHN	Checked by D. RICHARDSON	Drawn by L.PILLAY/S.LAVER
Angle of Projection Third Angle	Units mm	Scale N/A	Released 03/05/17
	Status RELEASED	SELECT 360 WITH MDR-508xx-1000	
Part No N/A	BE-003616-01-17		