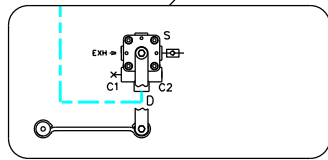
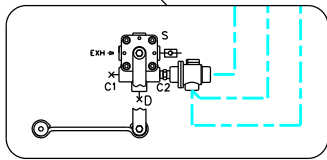


NOTE:
 CONTROL VALVE OPT. "LOW-BUOY", "A" OR "B" SETTING:
 POSITION "A": VALVE IS OPEN,
 AIR FLOW BETWEEN SUPPLY (S) AND
 DELIVERY (D), LOW-BUOY IS IN FUNCTION.
 POSITION "B": VALVE CLOSED,
 AIR DOES'NT FLOW BETWEEN SUPPLY (S) AND
 DELIVERY (D), LOW-BUOY IS NOT IN FUNCTION.

TUBE COLOR CODING		
LINE TYPE	COLOR	CIRCUIT
	BLUE	SUSPENSION
	BLACK	ACCESSORIES FOR SUSPENSION



LOW-BUOY ONLY



HIGH-BUOY ONLY

NUMEROTATION RANGE:	400 0 499
LAST NUMBER USED:	412
UNUSED NUMBERS:	401,402,410,411,413

LEGEND:	"RES-1": SERVICE TANK	"PT-1": PILOT
"SER": SERVICE	"P": PRESSURE	"A": DRAIN
"EM": EMERGENCY	"A": ACCESSORY	"S": SOLENOID
"EXH": EXHAUST	"D": DELIVERY	"SP": SPRING
"BAL": BALANCE	"S": SUPPLY	

THIS DOCUMENT IS THE EXCLUSIVE PROPERTY OF PREVOST CAR INC.
 STE-CLAUDE, QUE. AND MAY NOT BE USED OR REPRODUCED FOR ITS
 CONTENT OR PART THERE OF DISCLOSED TO OTHERS BY ANY PERSON
 OR COMPANY SAVE WITH THE EXPRESS CONSENT IN WRITING FROM
 PREVOST CAR INC.

REV	DATE	DESCRIPTION	BY
B	2015/01	O.C. *2013172	Rob.
A	2013/06	O.C. *2012125	Rob.
PREVOST			
<small>Prevost Car Inc. Ste-Claude, Quebec, Canada GOR 2V0</small>			
ENG. TECH:	DATE:	APPR:	
Rob.	2013/06	M.J.H.	
GENERAL TOL.	ECHELLE:	PROJ:	
mm ± N/A deg ± N/A	N/A	D140380	
MATERIAL:	INSTALLATION		
FINISH:	N/A		
REF.:	H3-45 WITH KNEELING OPTION		
TITLE:	LOW-BUOY ET/OU HIGH-BUOY OPTIONS		
PART NUMBER:	D140407 P4	CAD	